

# How to develop integrated care

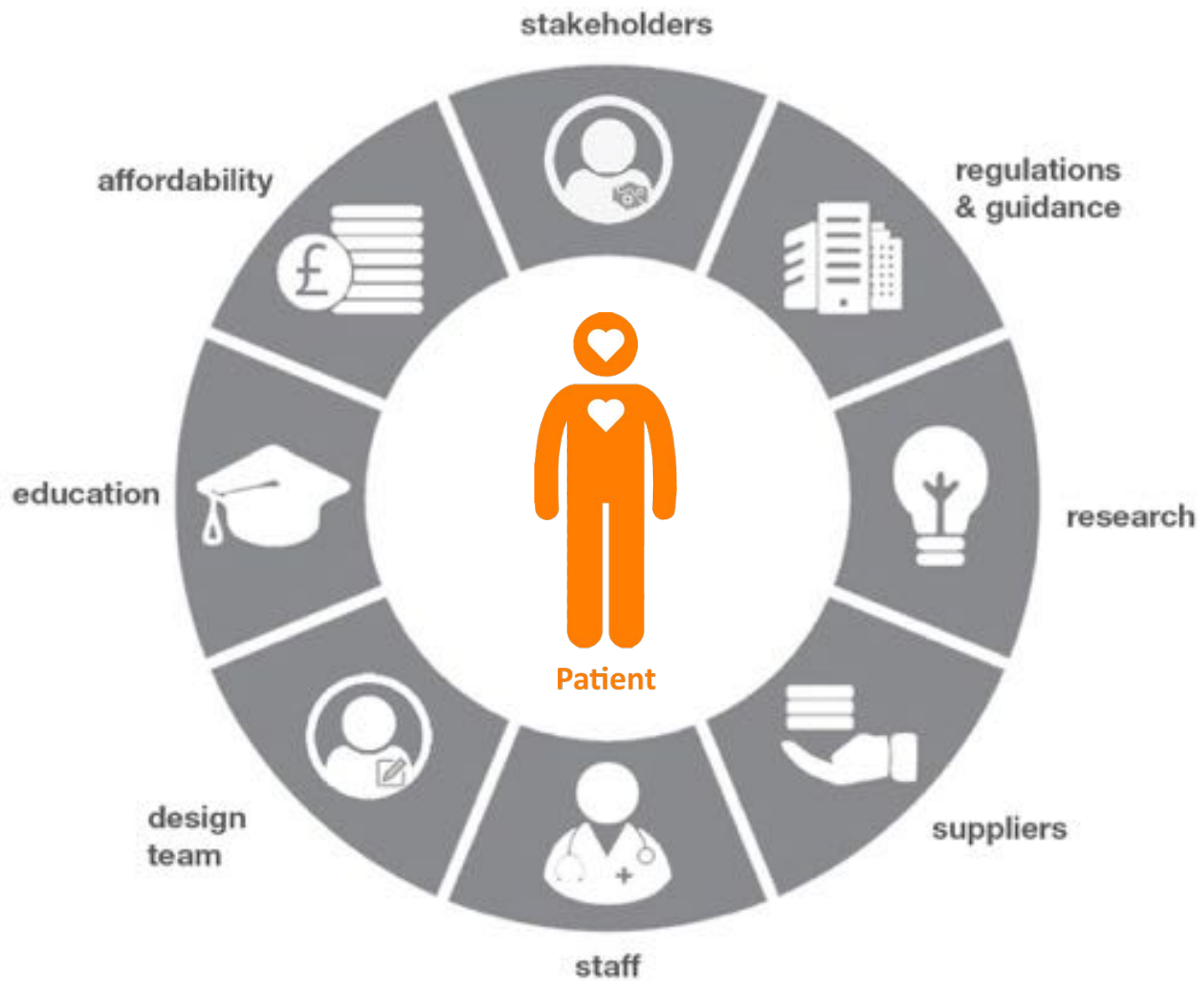
Cressida Toon

**sonnemann**toon

Suzanne MacCormick



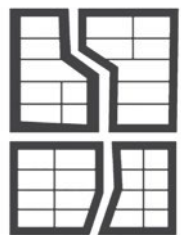












2008



2012

2014

2018





Urban planner



Health planner



Architect



User

Project manager



Commissioner

Developer

Manufacturers



Funder



Urban planner



User



Project manager



Health planner



Commissioner



Developer



Architect



Funder



Manufacturers

2008

1.10 Specifically, the Operating Framework clarifies:

- the business processes: ensuring a business-like and transparent approach to planning that supports locally led decisions, whilst

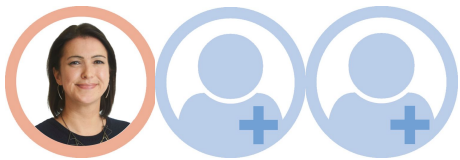
providing accountability. There is a strong emphasis on **genuine partnership working** between PCTs, local authorities and other

enterprise) to ensure that local health and wellbeing needs are better understood and addressed in partnership. Joint strategic needs assessments (JSNAs) will be vital in this context.<sup>1</sup> They will also provide robust information to support commissioners as they fulfil their legal duty to carry out equality impact assessments to assure themselves that services are both accessible to and appropriate for the whole community.

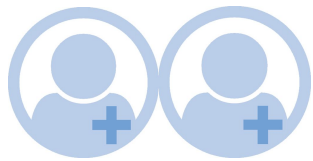
<sup>1</sup> JSNA guidance is available at: [www.dh.gov.uk/en/Publicationsandstatistics/Publications/PublicationsPolicyAndGuidance/DH\\_081297](http://www.dh.gov.uk/en/Publicationsandstatistics/Publications/PublicationsPolicyAndGuidance/DH_081297)



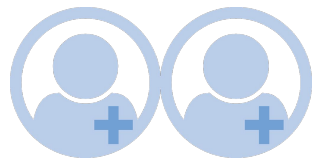
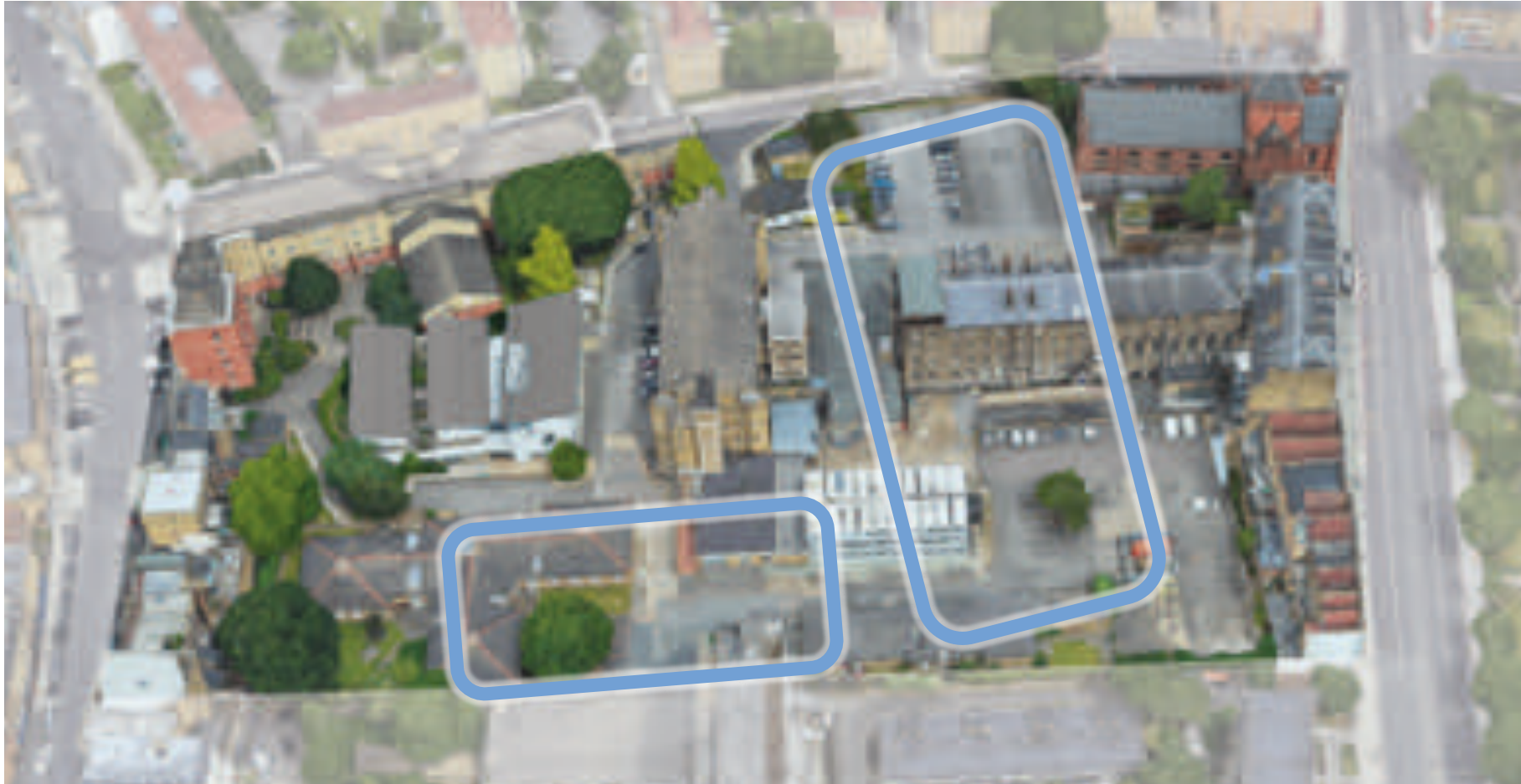
2008



2008

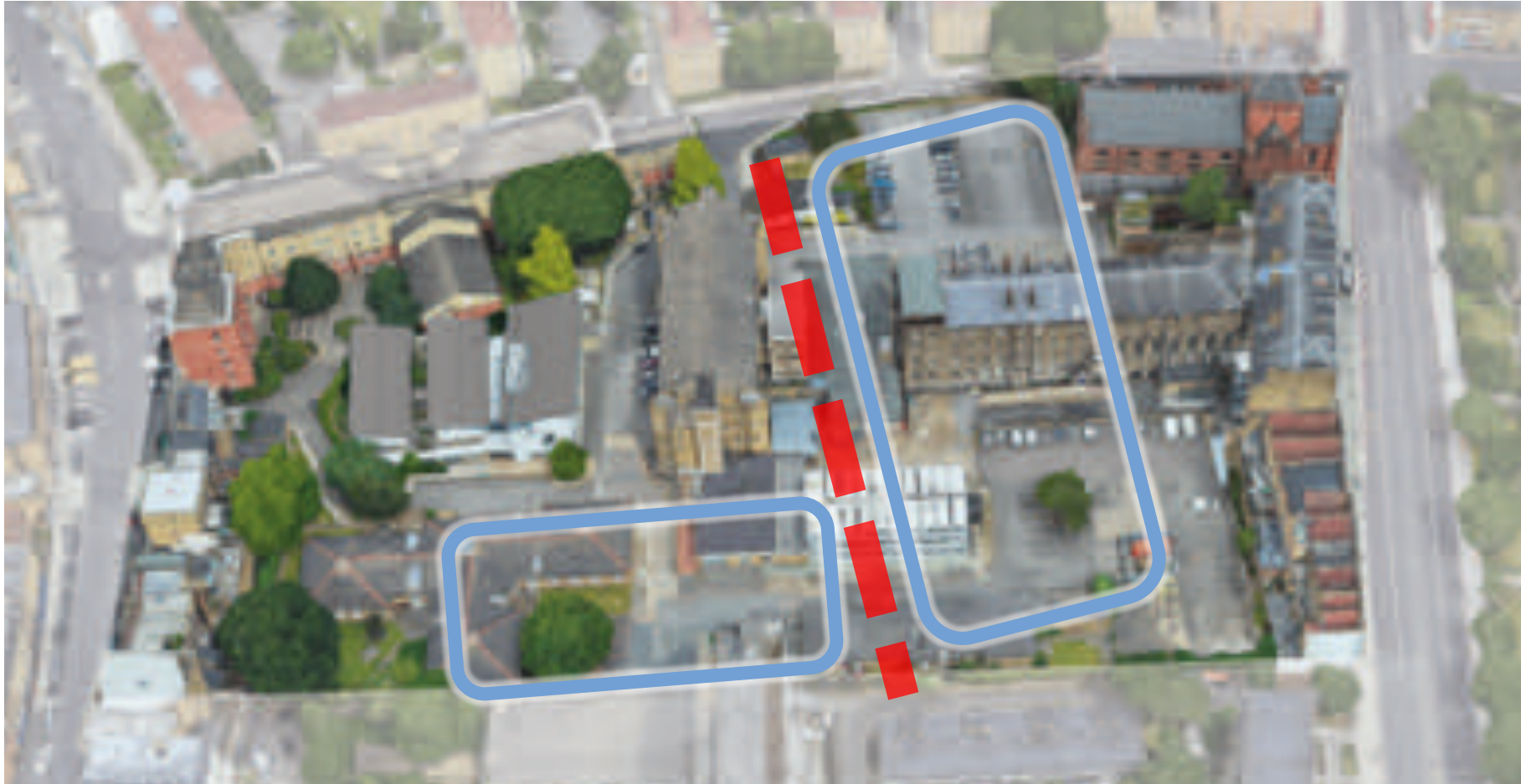


2008

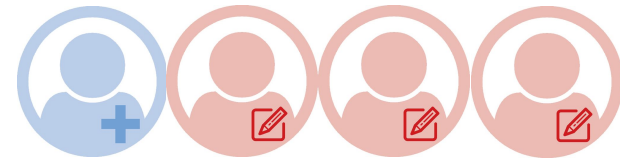
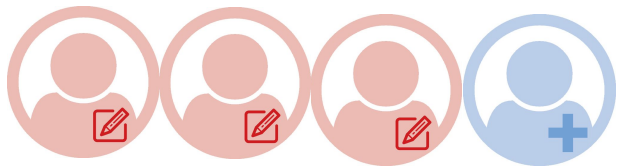
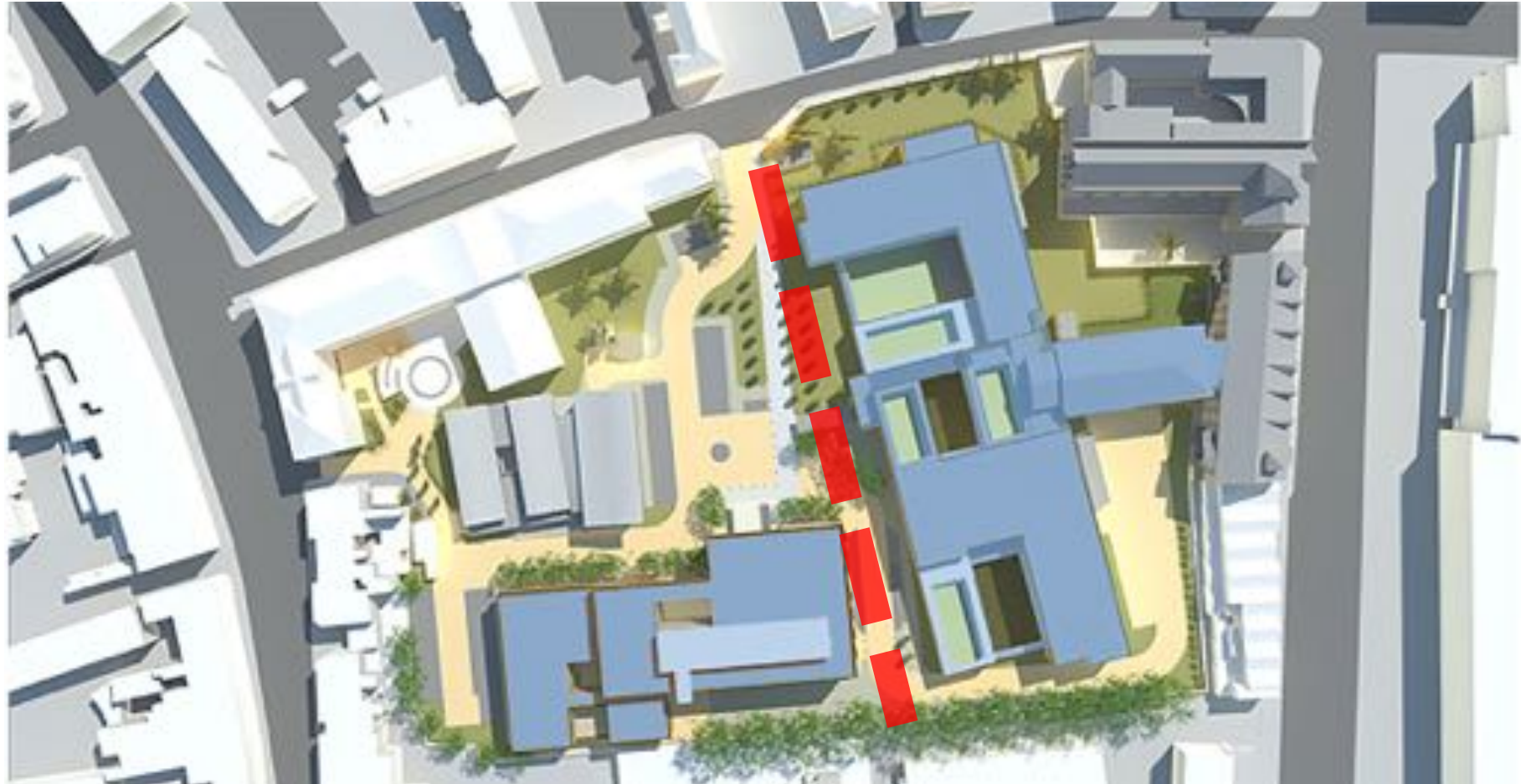




2008



2008











2008





2011



**Joint Strategic Needs Assessment  
and joint health and wellbeing  
strategies explained**

*Commissioning for populations*

2012



# Health and Social Care Act 2012

CHAPTER 7

---

Explanatory Notes have been produced to assist in the  
understanding of this Act and are available separately

---

£44.75

2013

**NHS**

**Clinical Commissioning Group**

?





→ 2012 → →



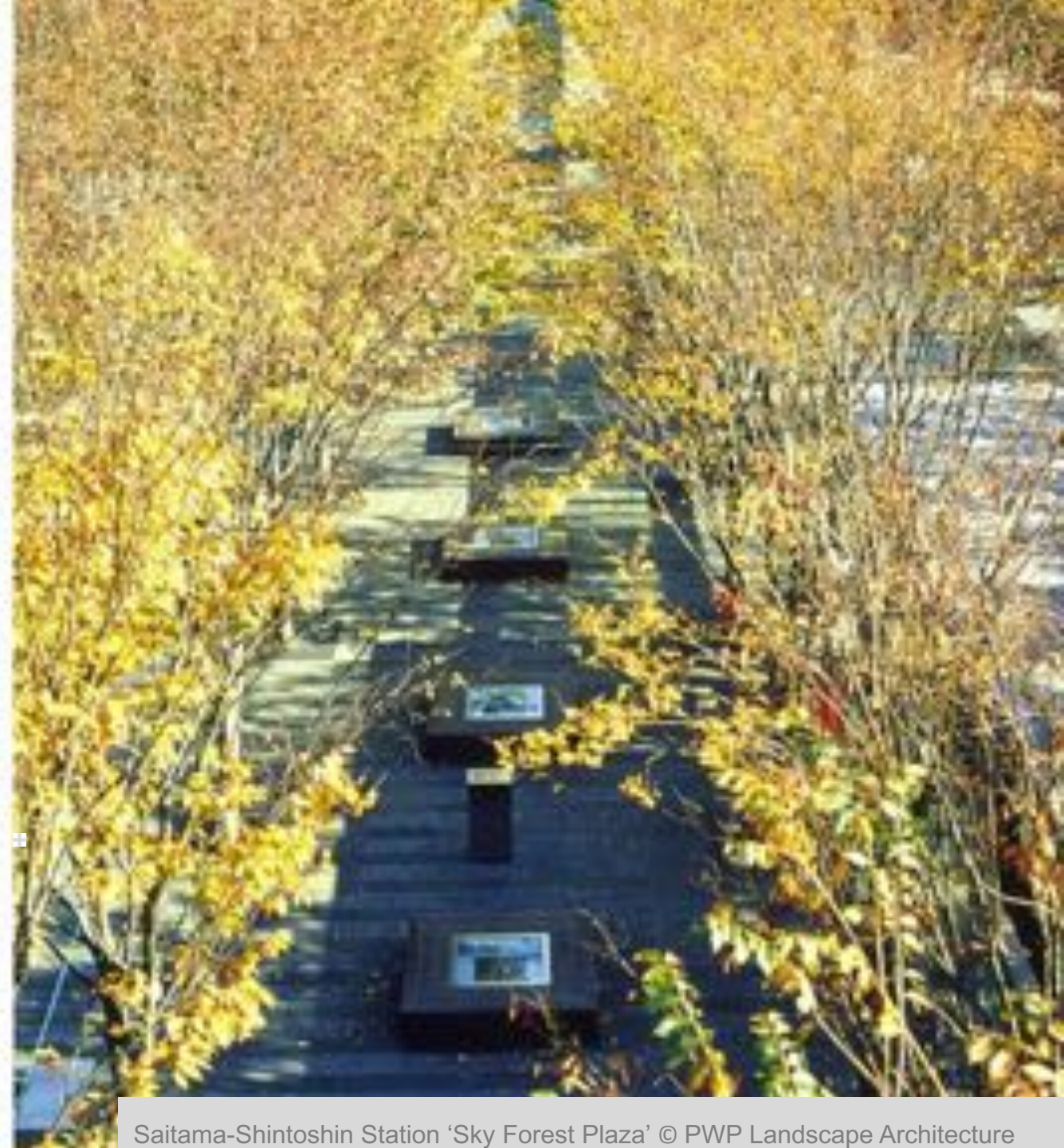
2012



2012







Saitama-Shintoshin Station 'Sky Forest Plaza' © PWP Landscape Architecture



2012



Honoré van Rijswijk [www.collectiveurbanstrategies.com](http://www.collectiveurbanstrategies.com)



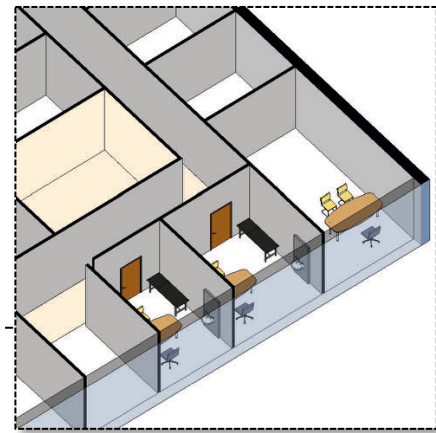
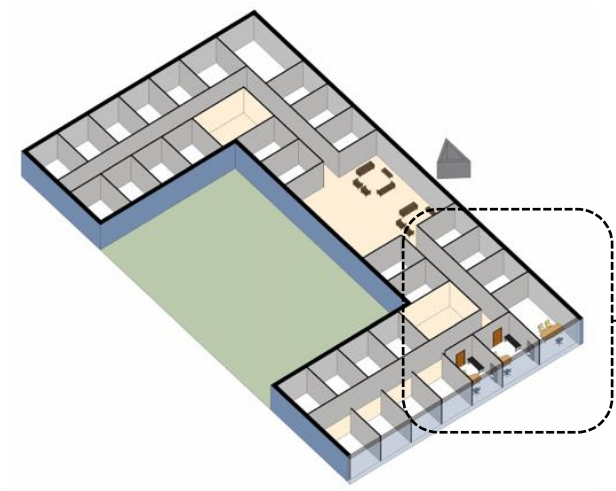
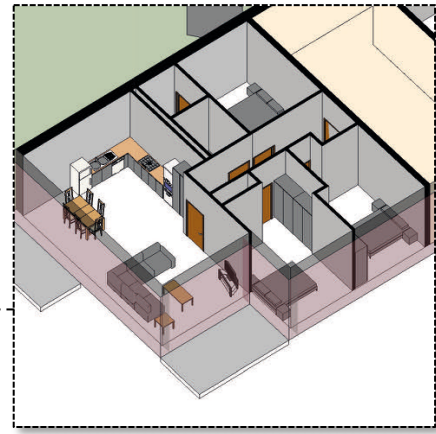
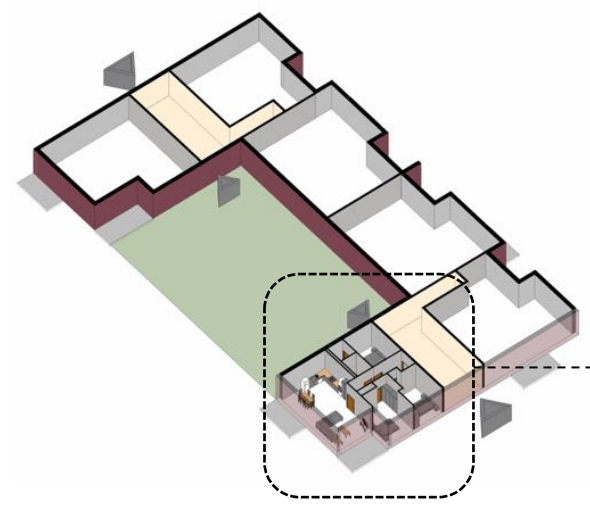


2012



→ 2012 →

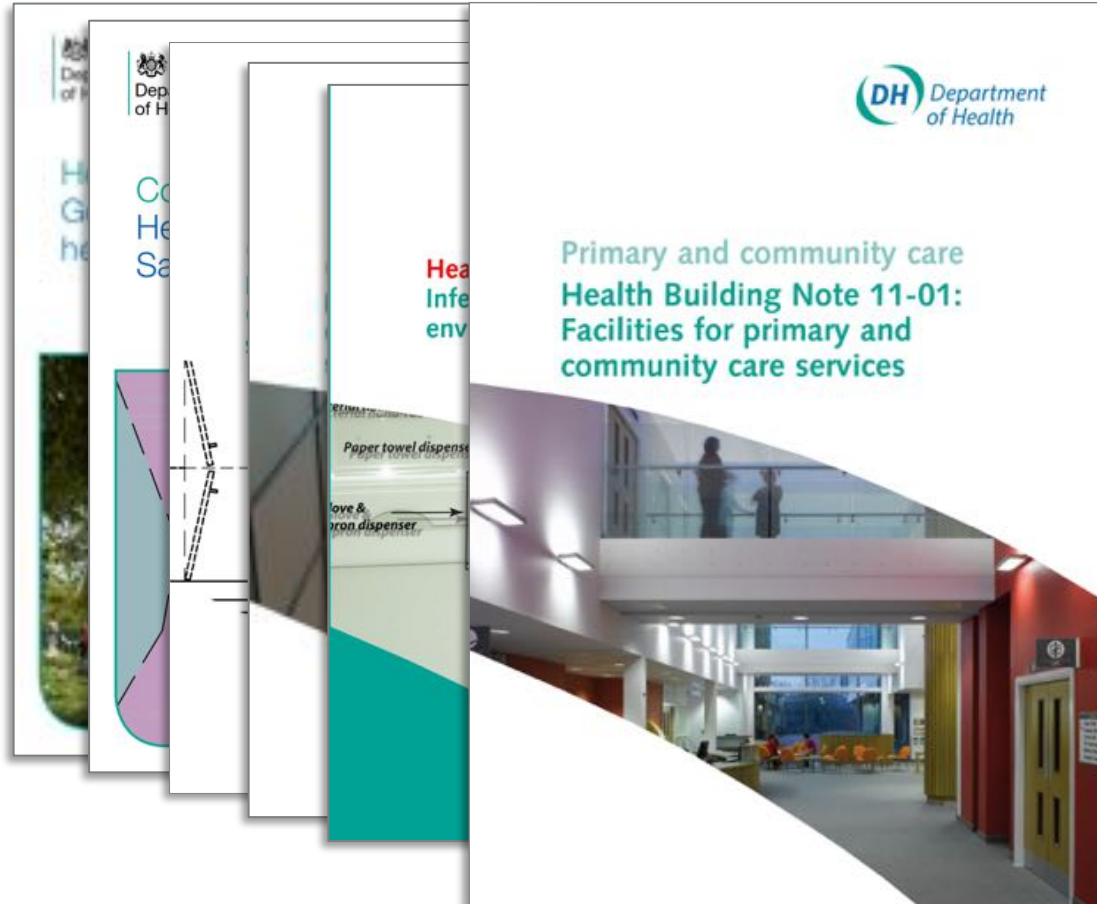
→





2013

2018





2018

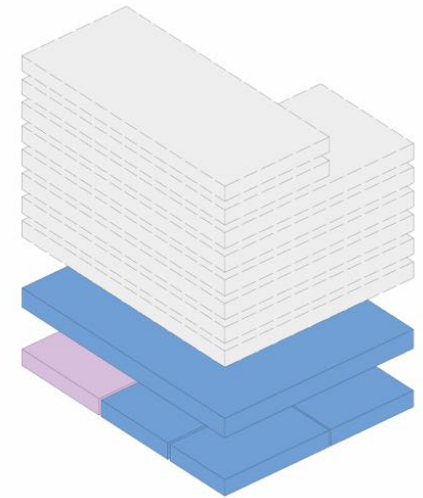




2014

Room No.	Room Name	Room Type	Room Size	Room Description	Room Status
101	Single Room	Single	10 sqm	Single room with en-suite bathroom and view of the sea.	Available
102	Double Room	Double	15 sqm	Double room with en-suite bathroom and view of the sea.	Available
103	Triple Room	Triple	20 sqm	Triple room with en-suite bathroom and view of the sea.	Available
104	Quadruple Room	Quadruple	25 sqm	Quadruple room with en-suite bathroom and view of the sea.	Available
105	Executive Suite	Executive	30 sqm	Executive suite with two bedrooms, living area, and view of the sea.	Available
106	Presidential Suite	Presidential	40 sqm	Presidential suite with three bedrooms, living area, and view of the sea.	Available
107	Yacht Club Suite	Yacht Club	35 sqm	Yacht club suite with two bedrooms, living area, and view of the sea.	Available
108	Family Suite	Family	28 sqm	Family suite with two bedrooms, living area, and view of the sea.	Available
109	Junior Suite	Junior	22 sqm	Junior suite with one bedroom, living area, and view of the sea.	Available
110	Deluxe Room	Deluxe	18 sqm	Deluxe room with en-suite bathroom and view of the sea.	Available
111	Superior Room	Superior	16 sqm	Superior room with en-suite bathroom and view of the sea.	Available
112	Standard Room	Standard	14 sqm	Standard room with en-suite bathroom and view of the sea.	Available
113	Economy Room	Economy	12 sqm	Economy room with en-suite bathroom and view of the sea.	Available
114	Basic Room	Basic	10 sqm	Basic room with en-suite bathroom and view of the sea.	Available
115	Single Room	Single	10 sqm	Single room with en-suite bathroom and view of the sea.	Available
116	Double Room	Double	15 sqm	Double room with en-suite bathroom and view of the sea.	Available
117	Triple Room	Triple	20 sqm	Triple room with en-suite bathroom and view of the sea.	Available
118	Quadruple Room	Quadruple	25 sqm	Quadruple room with en-suite bathroom and view of the sea.	Available
119	Executive Suite	Executive	30 sqm	Executive suite with two bedrooms, living area, and view of the sea.	Available
120	Presidential Suite	Presidential	40 sqm	Presidential suite with three bedrooms, living area, and view of the sea.	Available

Schedule of accommodation



Shell Space



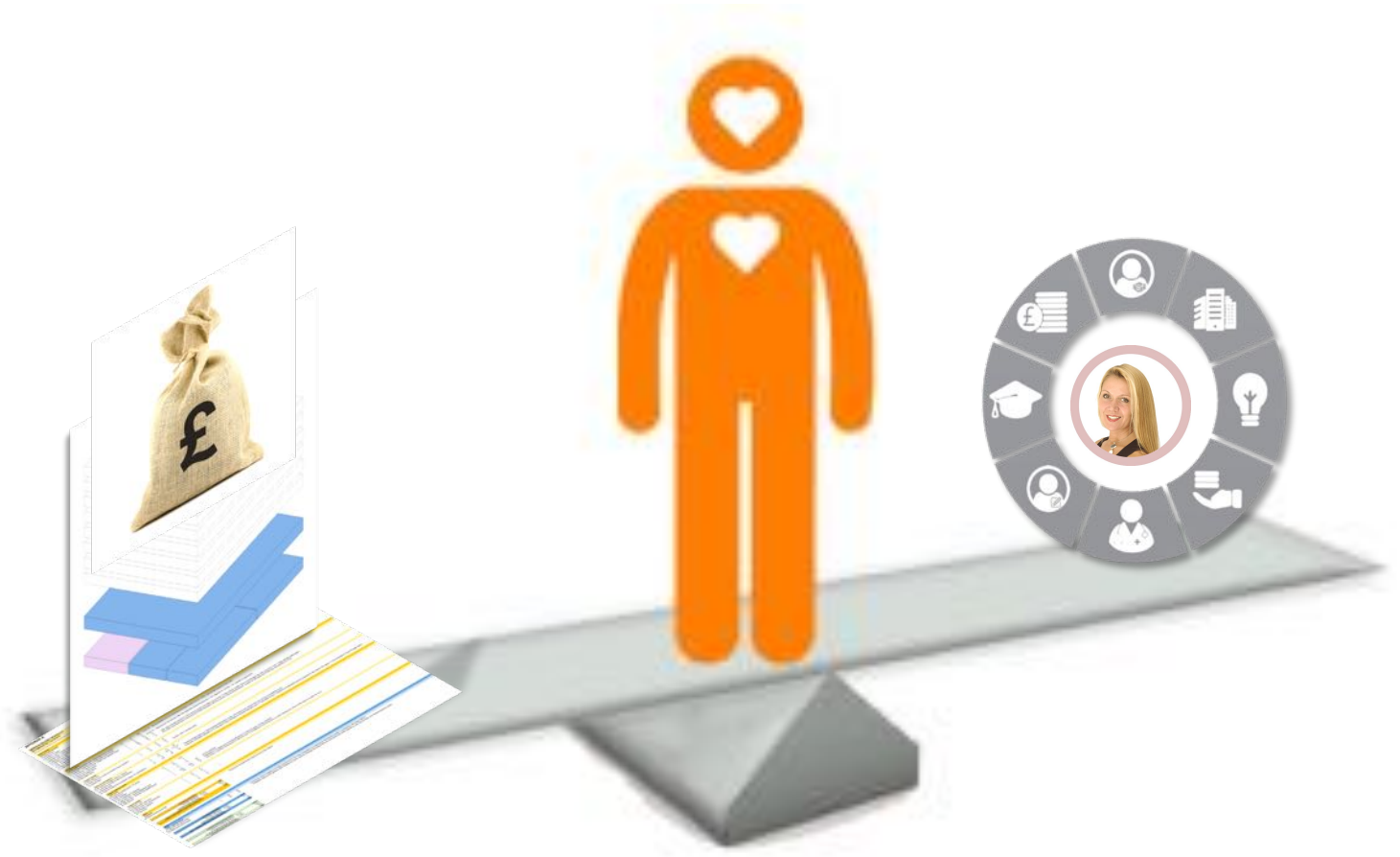
Budget

→ → 2014 →





2018

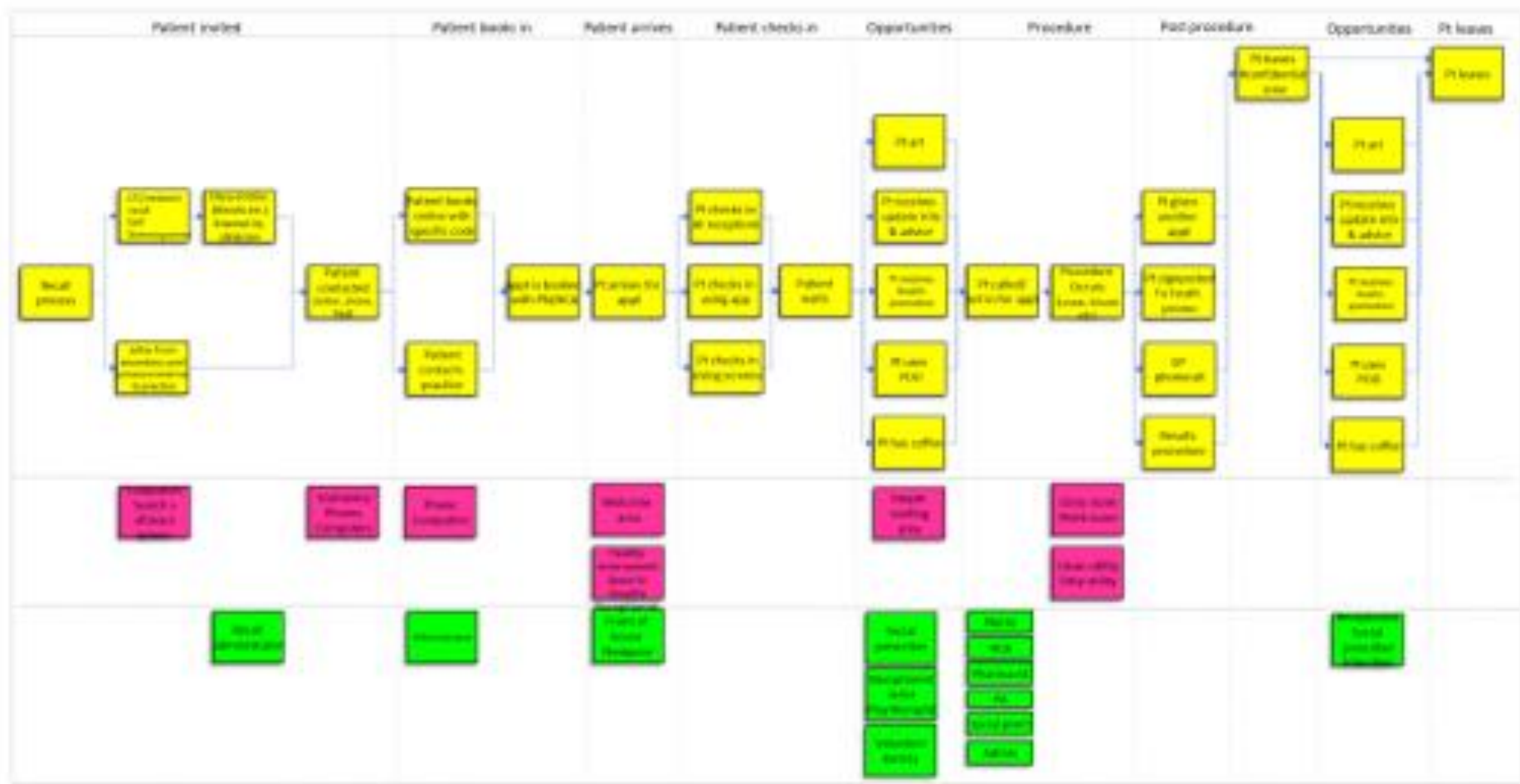






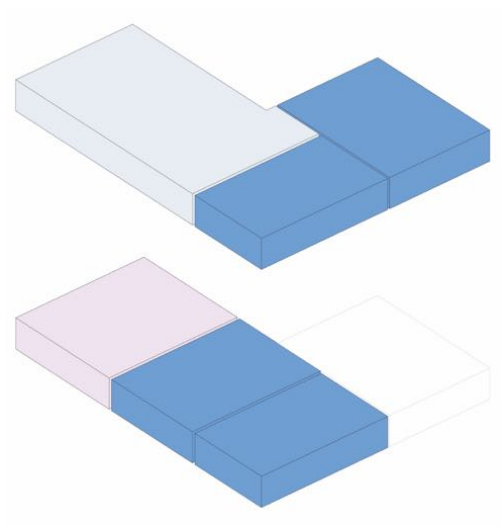


2018

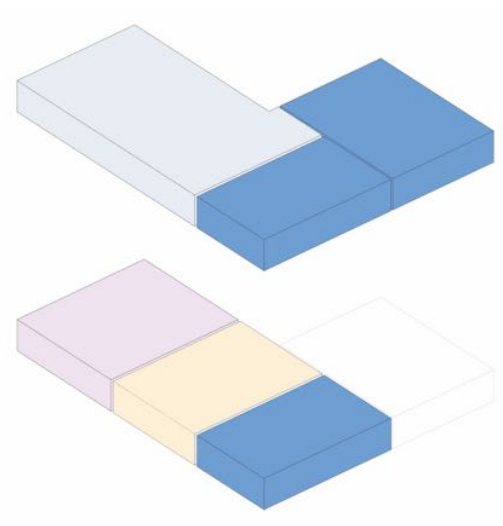




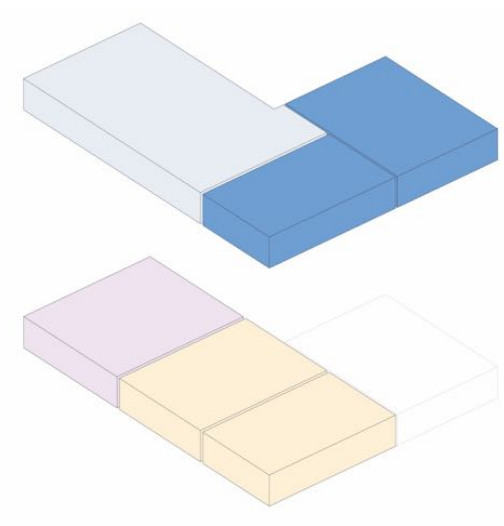




16 consult exam rooms



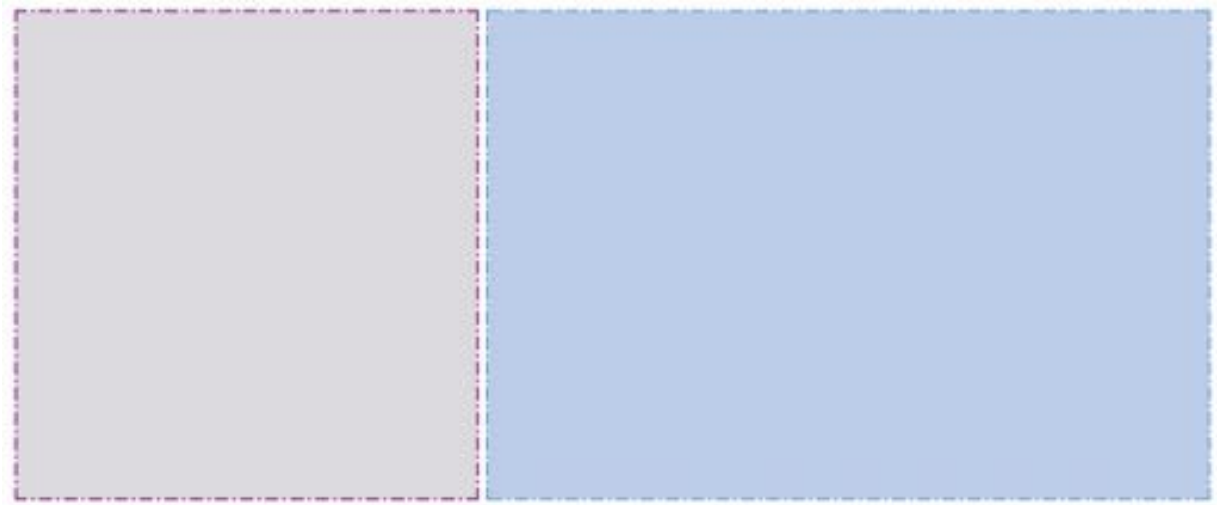
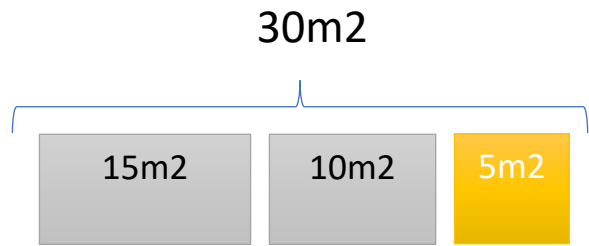
12 consult exam rooms



8 consult exam rooms

2018

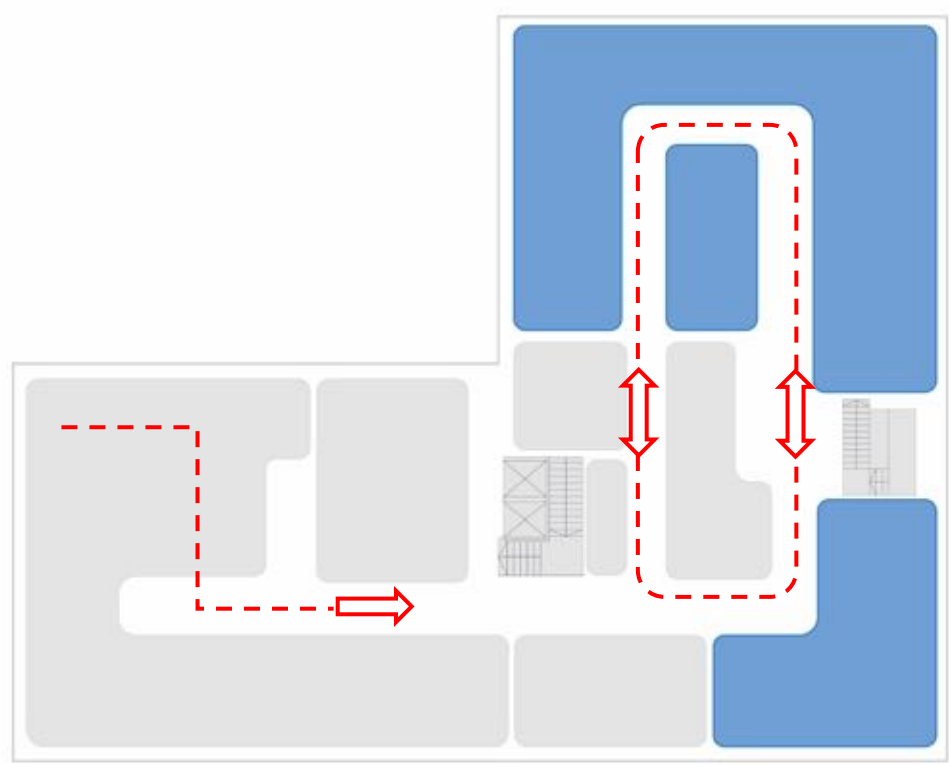






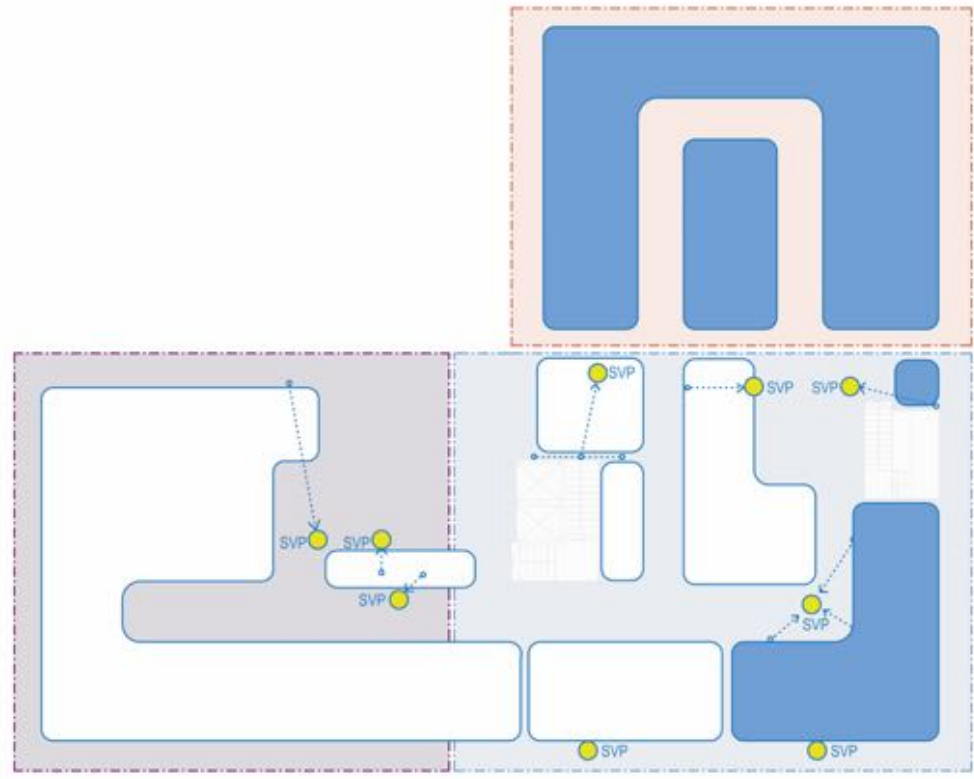


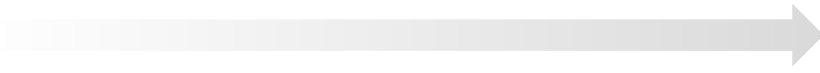
2018



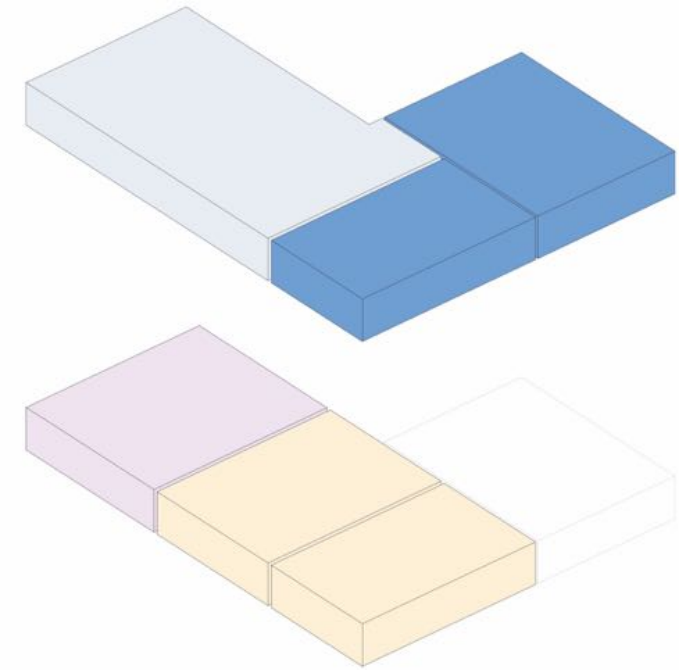


2018

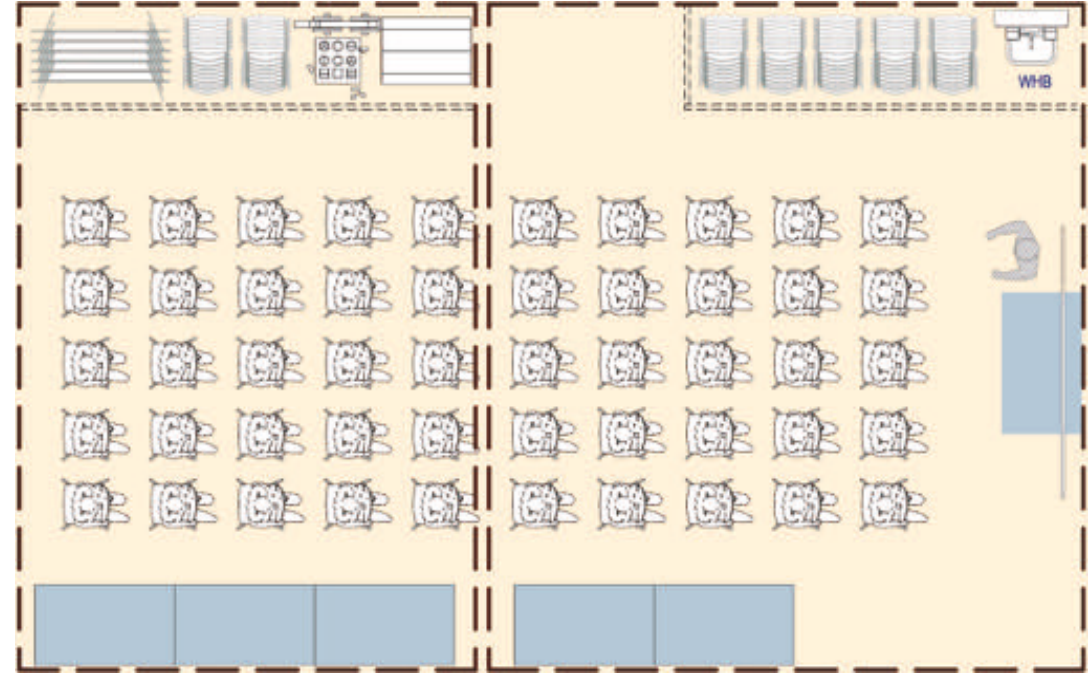




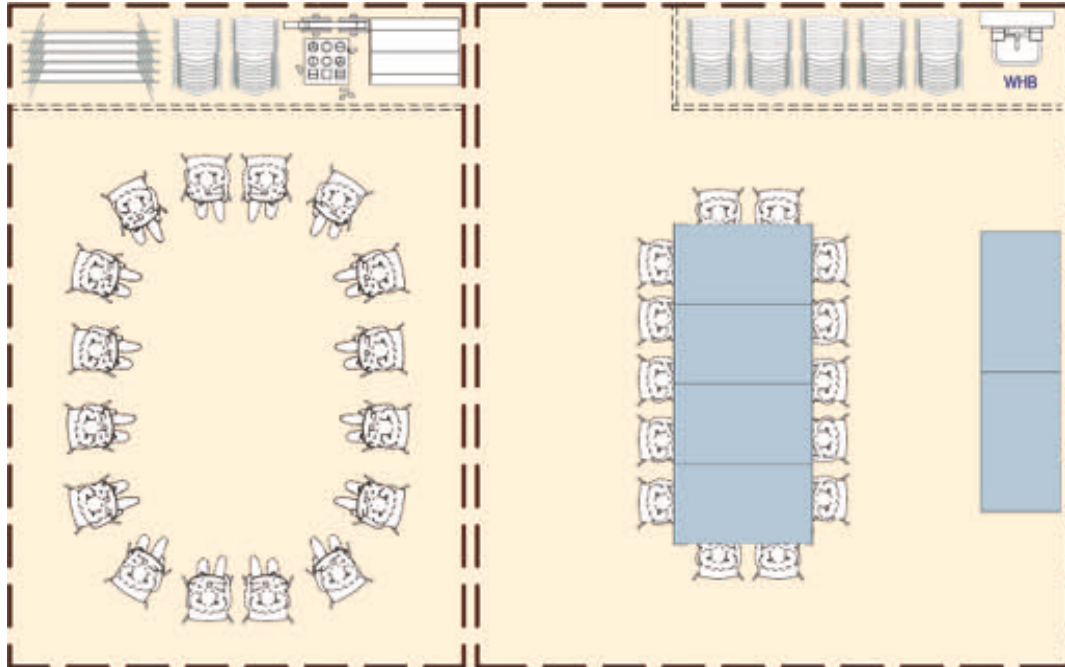
2018

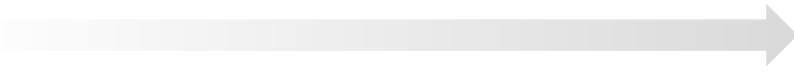




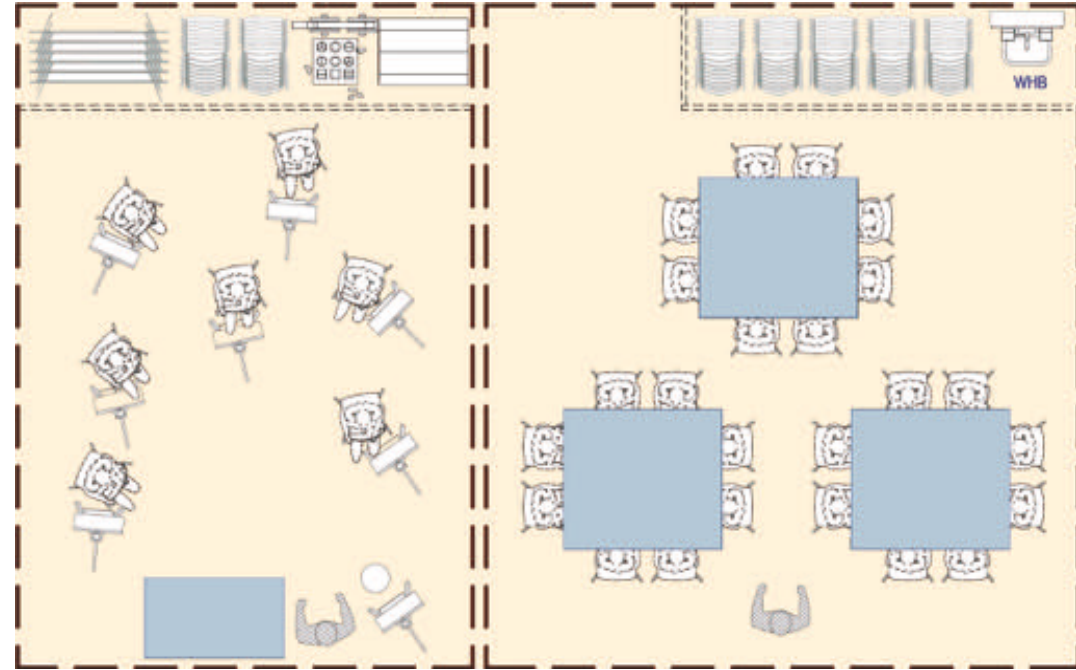


→ → 2018 →

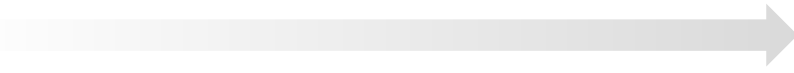




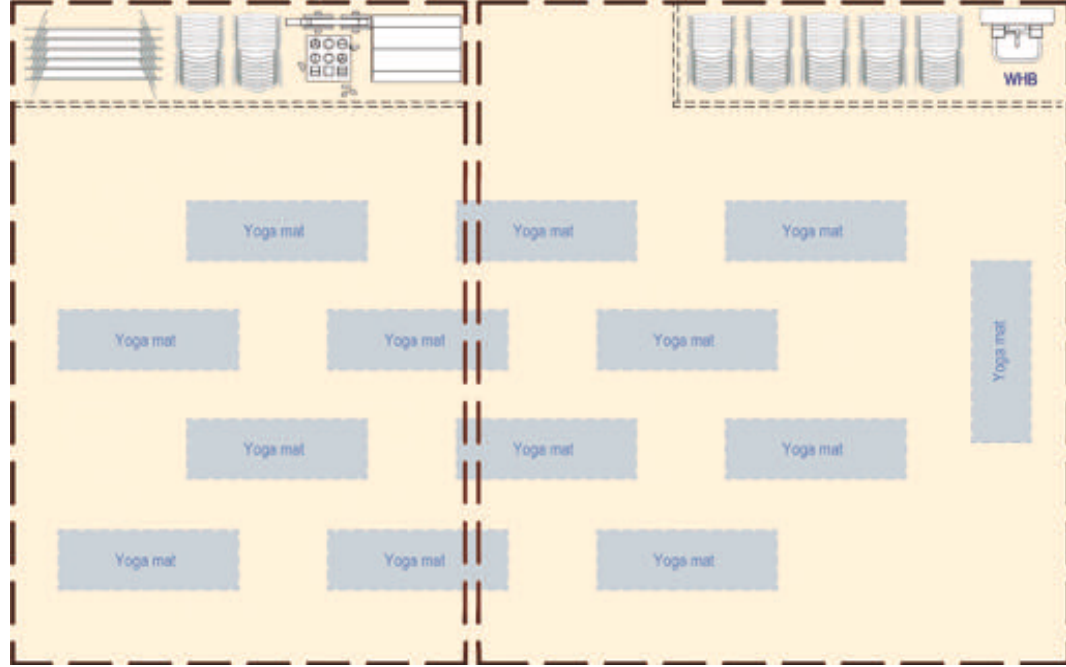
2018

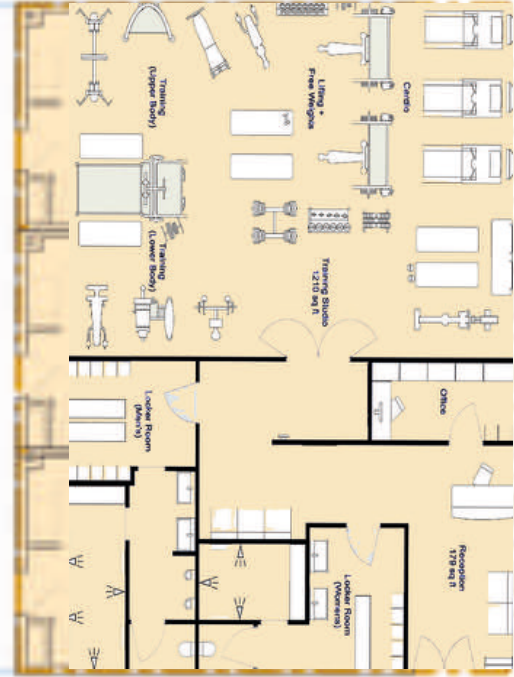
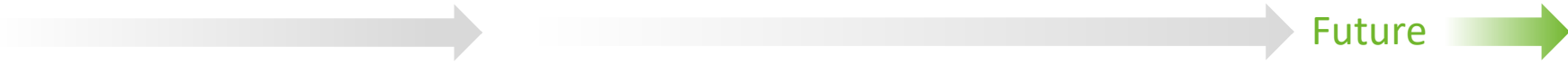


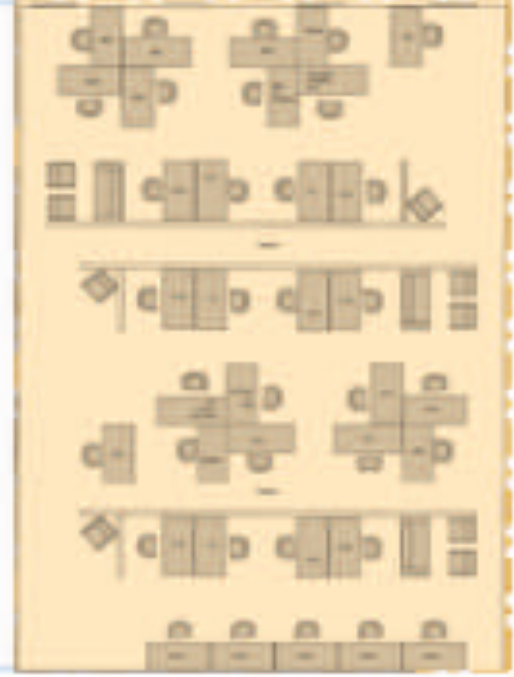


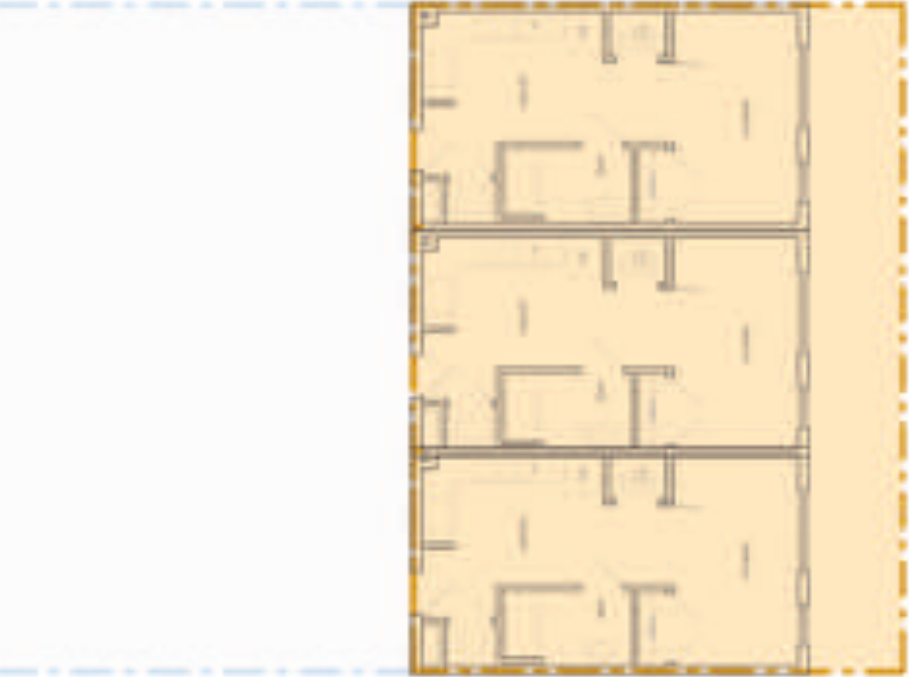
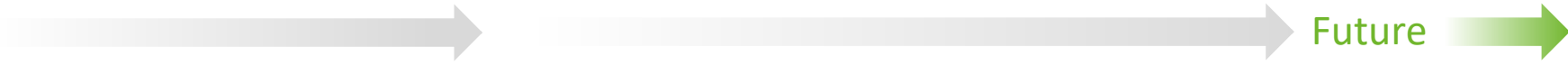


2018















2018







2018



2018



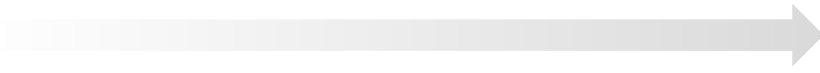




2018







Future

