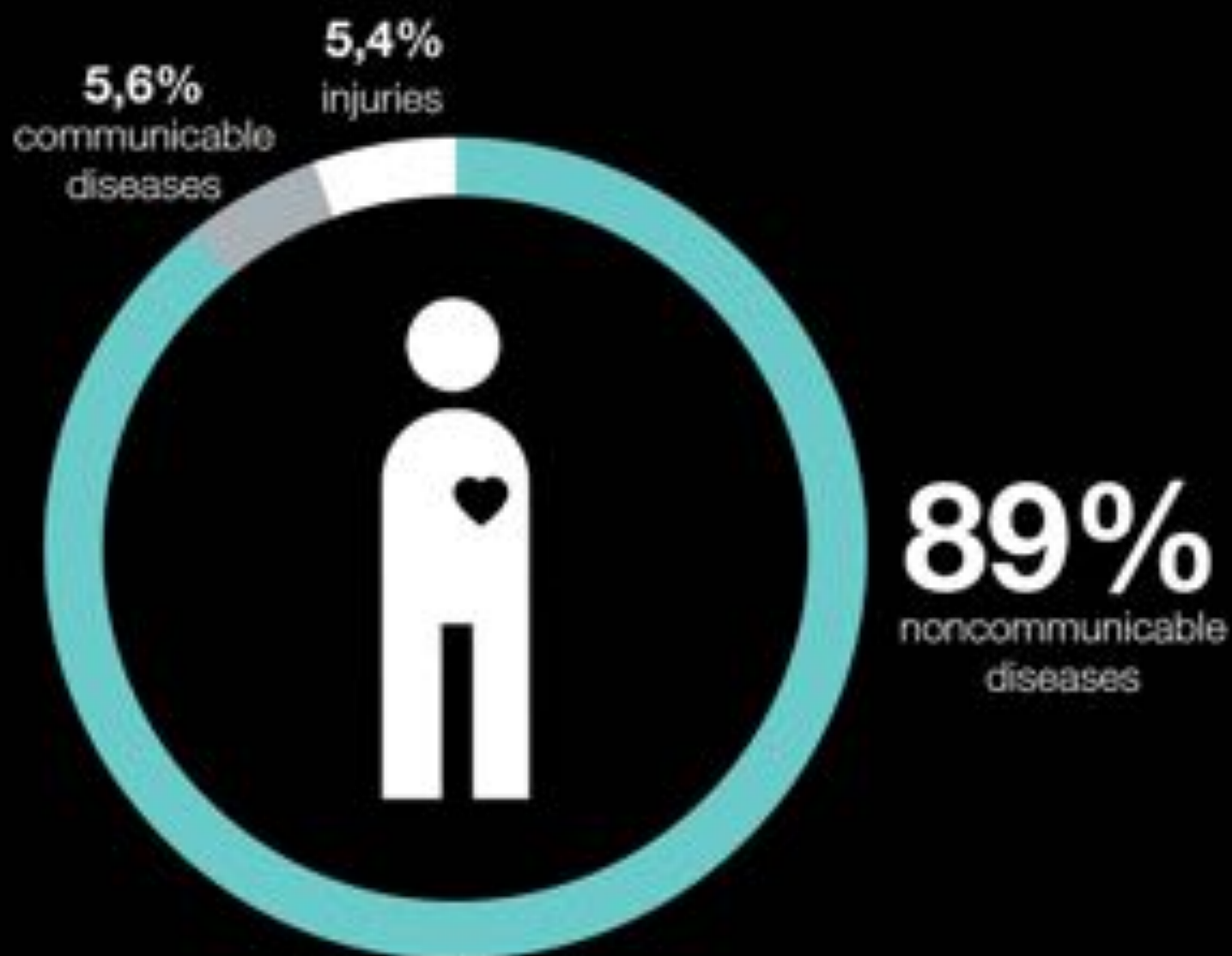


# Health Networks: Hospitals as part of a sustainable system Heinle, Wischer und Partner Freie Architekten

Eva Henrich

European Healthcare Design 2019, London





**Cause of death  
2015 European region**

Source: WHO, Global Health Estimates 2015

2010



35,2

2014



37,2

2016



42,4

people having a  
long-standing illness  
(chronic diseases)  
16 years and older,  
2008-2016 Germany

Source: Eurostat





**40%**  
Lifestyle  
Behaviors



**30%**  
Genetics



**15%**  
Social and  
Economic  
Factors

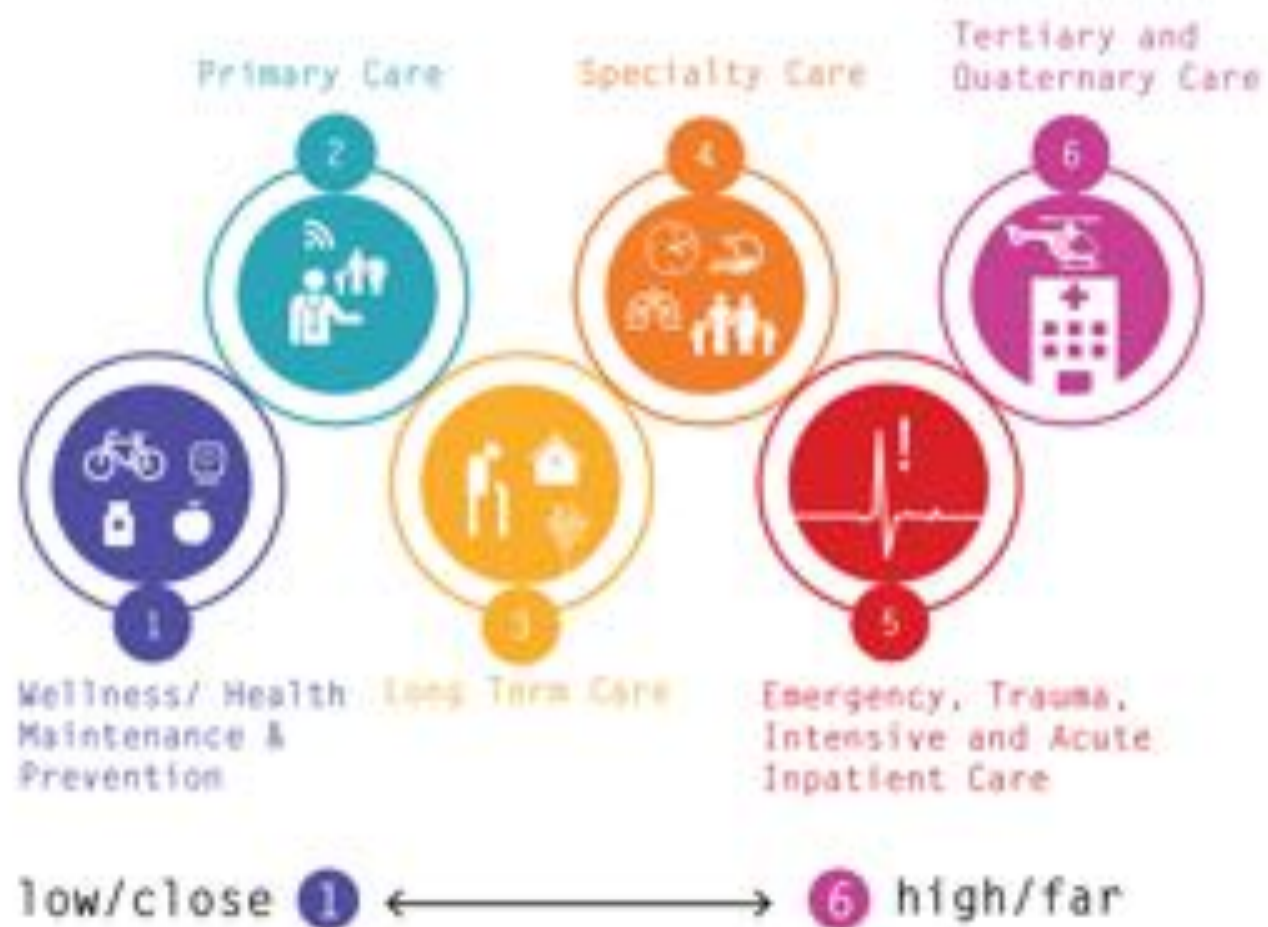


**10%**  
Medical  
Care



**5%**  
Environmental  
Exposure

A health system approach

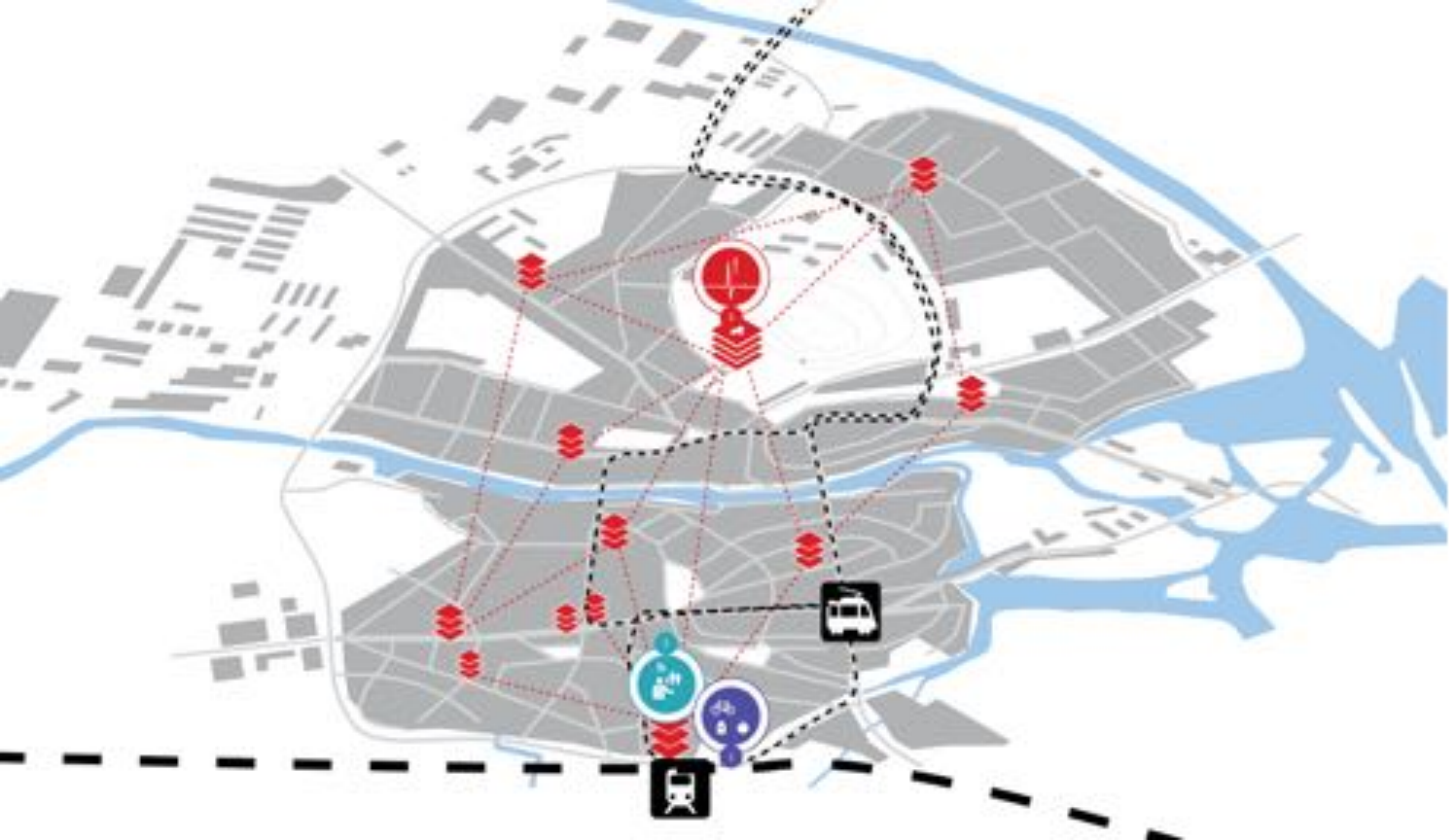














public event space:  
health prevention



medical offices,  
ambulatory surgery,  
physiotherapy...



community space:  
-pharmacy  
-bakery  
-organic supermarket  
-health care supply store  
-nutrition counselling  
-blood donor service...

# Wir sind für Sie da!

Schreiben Sie einfach ein Mail an [info@gzb-hauptbahnhof.de](mailto:info@gzb-hauptbahnhof.de) oder rufen Sie uns an: 030 250 250 250

medical offices:  
information,  
online appointment  
booking..

services and  
shopping:  
opening hours..

events: overview  
and registration..

## Aktuelles

aktuelle news aus der Praxis

[Lesen Sie mehr](#)

## Praxen

Sie suchen einen Arzt? Hier sind Ihnen  
geholfen.

[Lesen Sie mehr](#)

## Dienstleister

Apotheken, Bäcker, Friseurinnen und vieles  
mehr erwartet Sie im GZB

[Lesen Sie mehr](#)

## Veranstaltungen

Unsere Neugkeiten informieren Sie über alle

[Lesen Sie mehr](#)

[Lesen Sie mehr](#)





HOME

**55%**

2%  
HOSPITAL

what people want

HOME

**23%**

**52%**

HOSPITAL

reality











Moving forward:  
The action plan

01 Ubiquitous healthcare and  
hospitals without walls



02 Resilience and  
sustainability



03 Healthcare infrastructure  
and placemaking

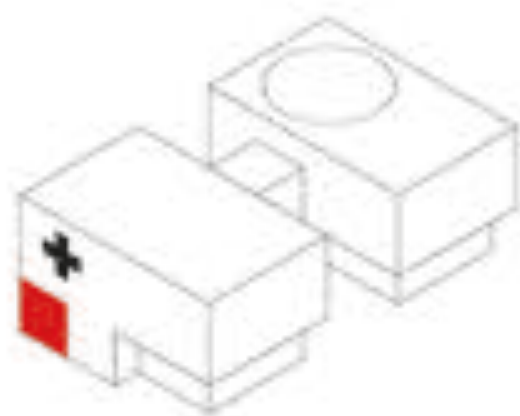


04 Pre-test design  
(communication + collaboration)



# 01 Ubiquitous healthcare





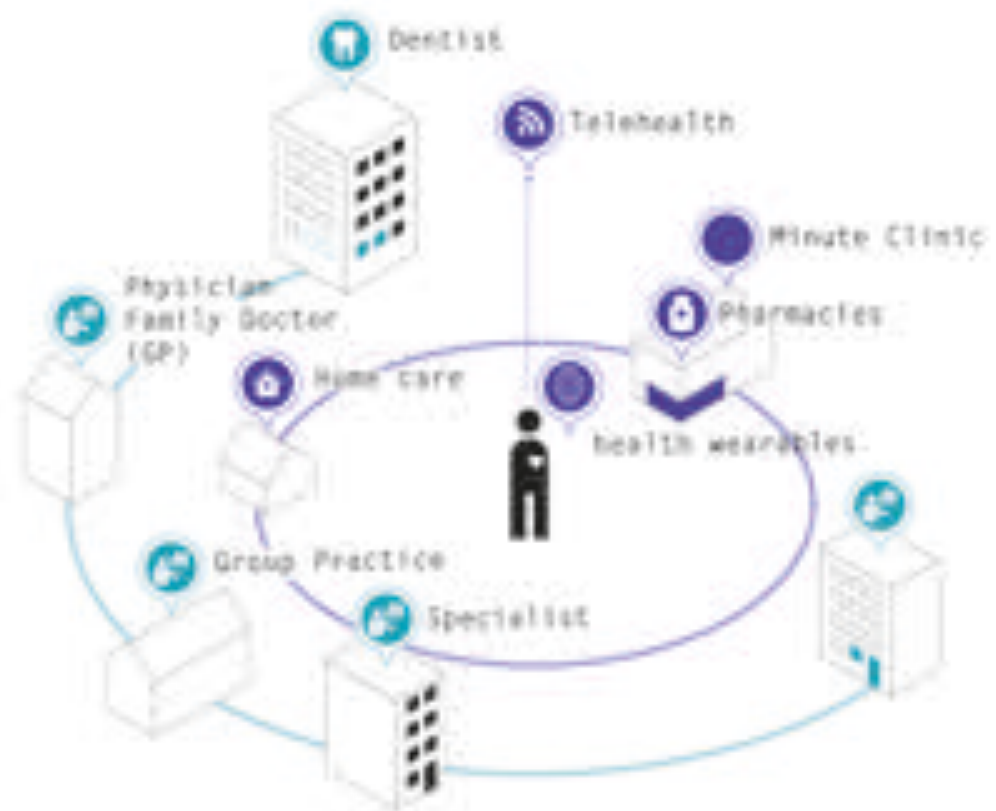


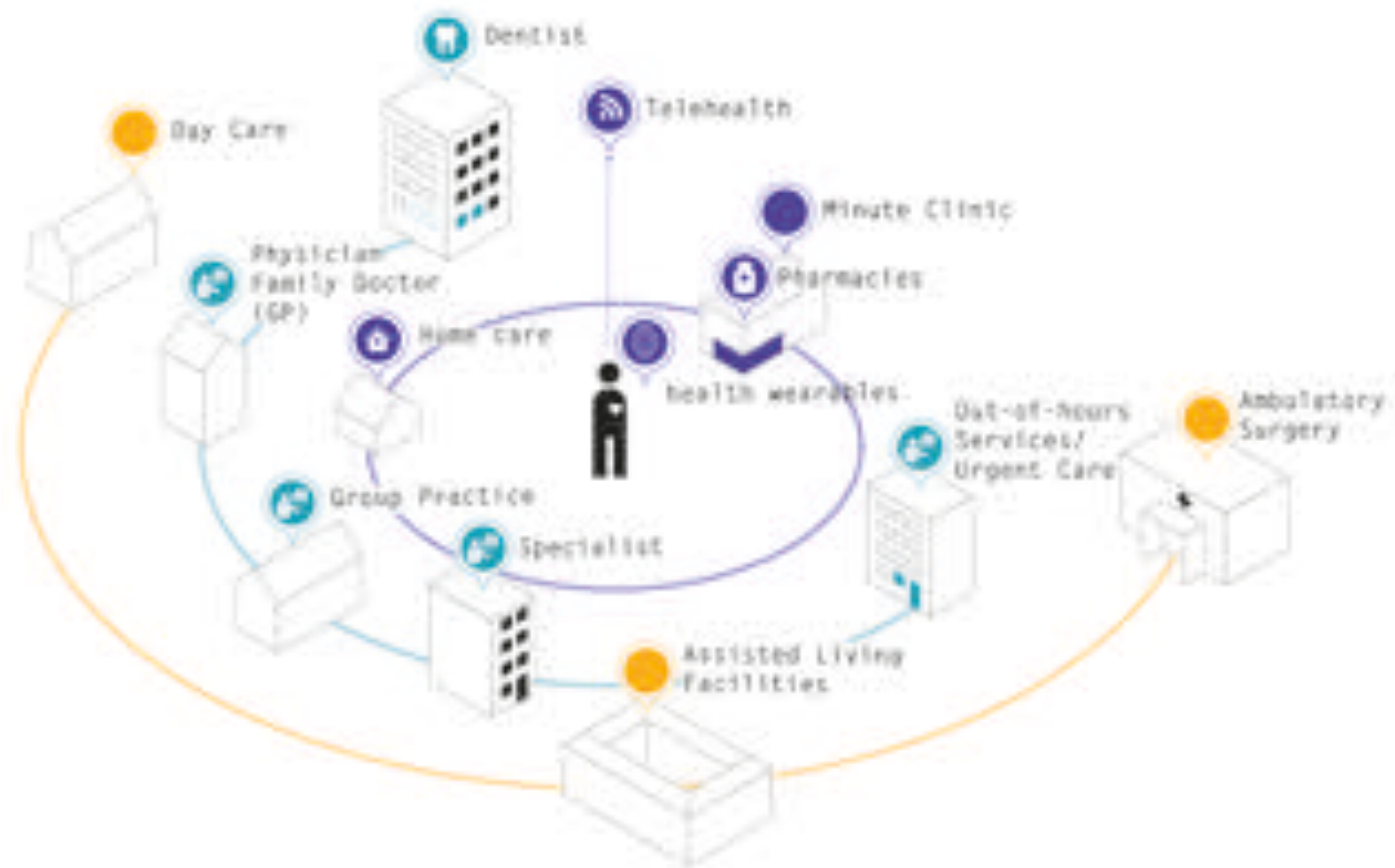


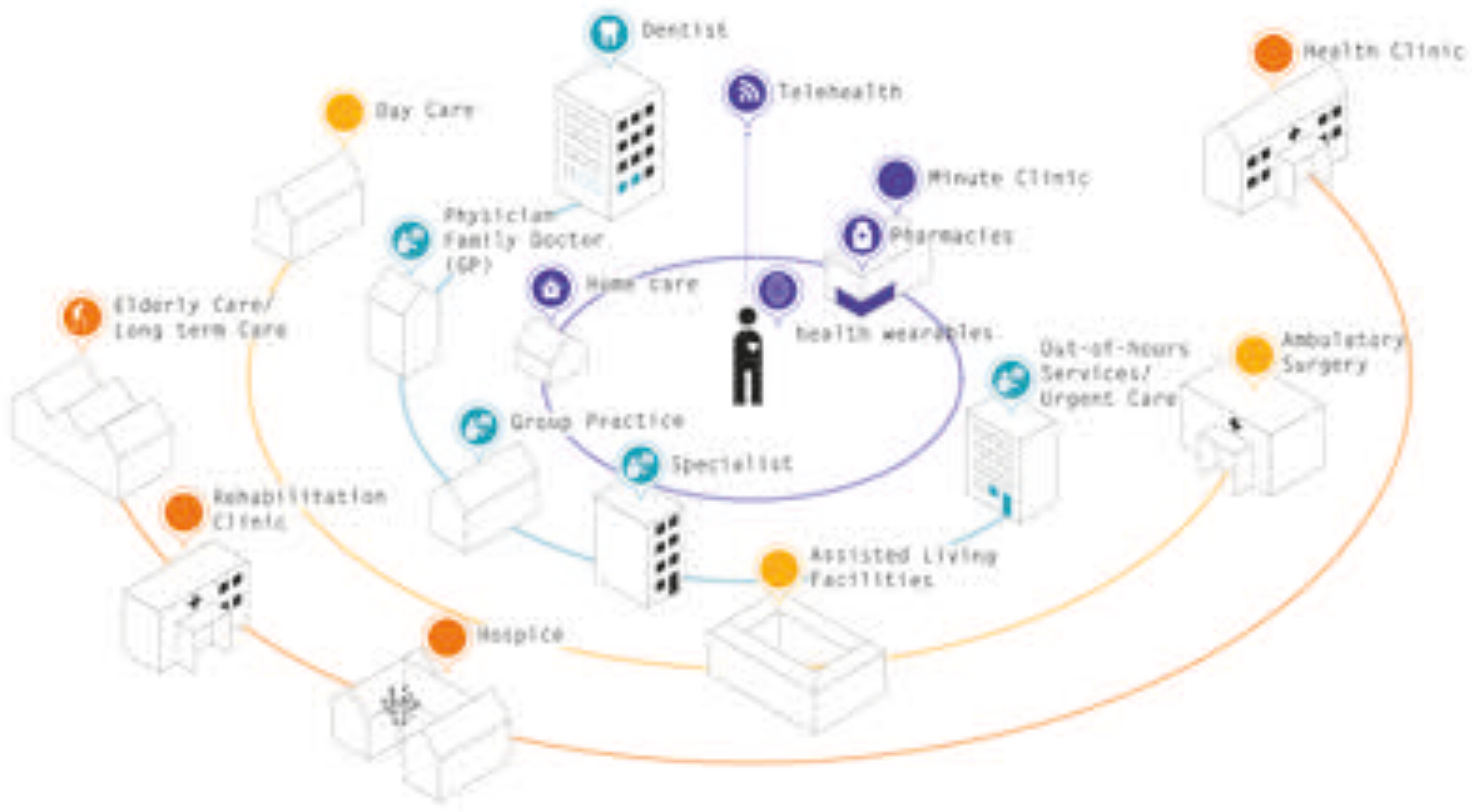


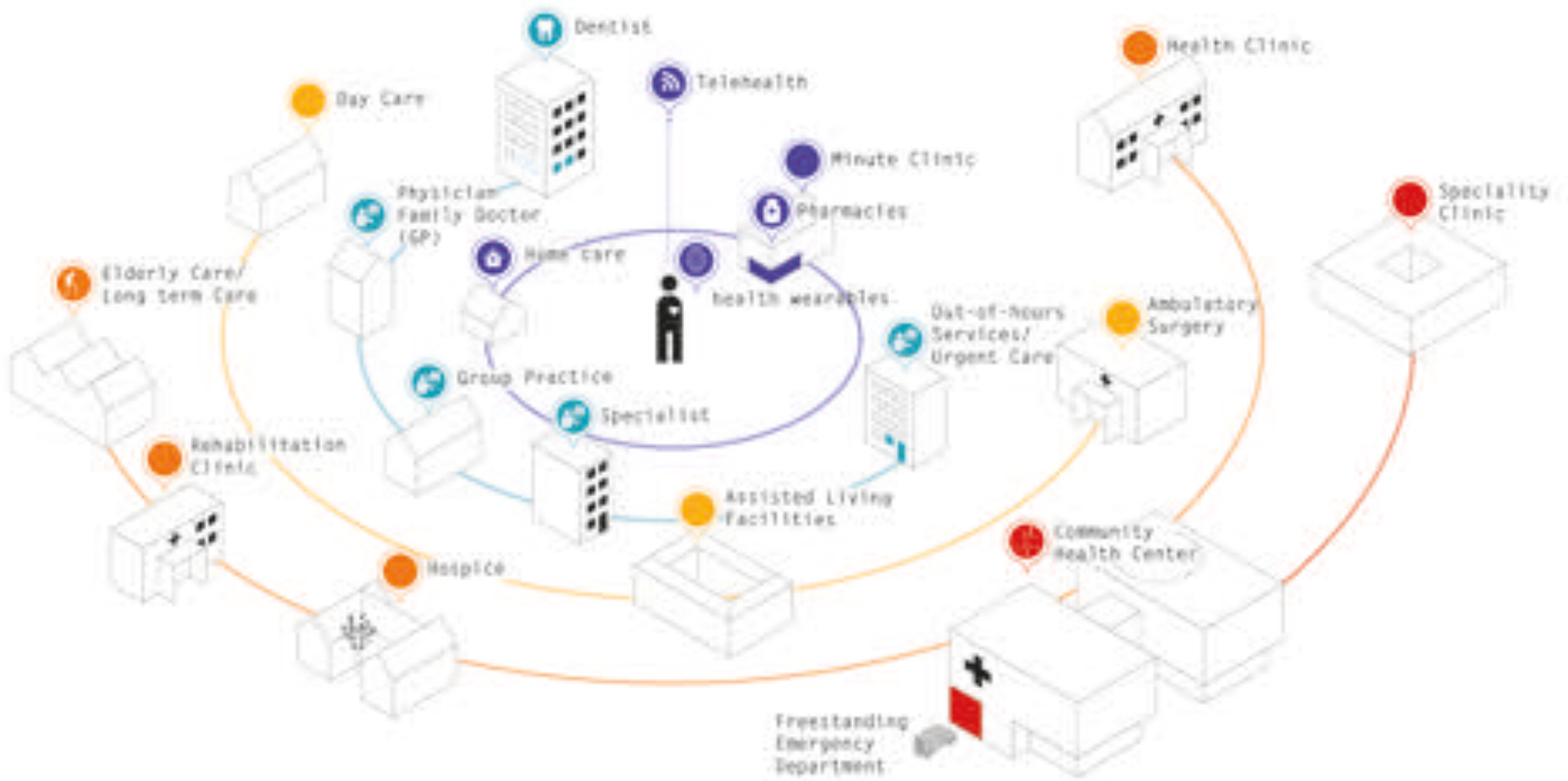




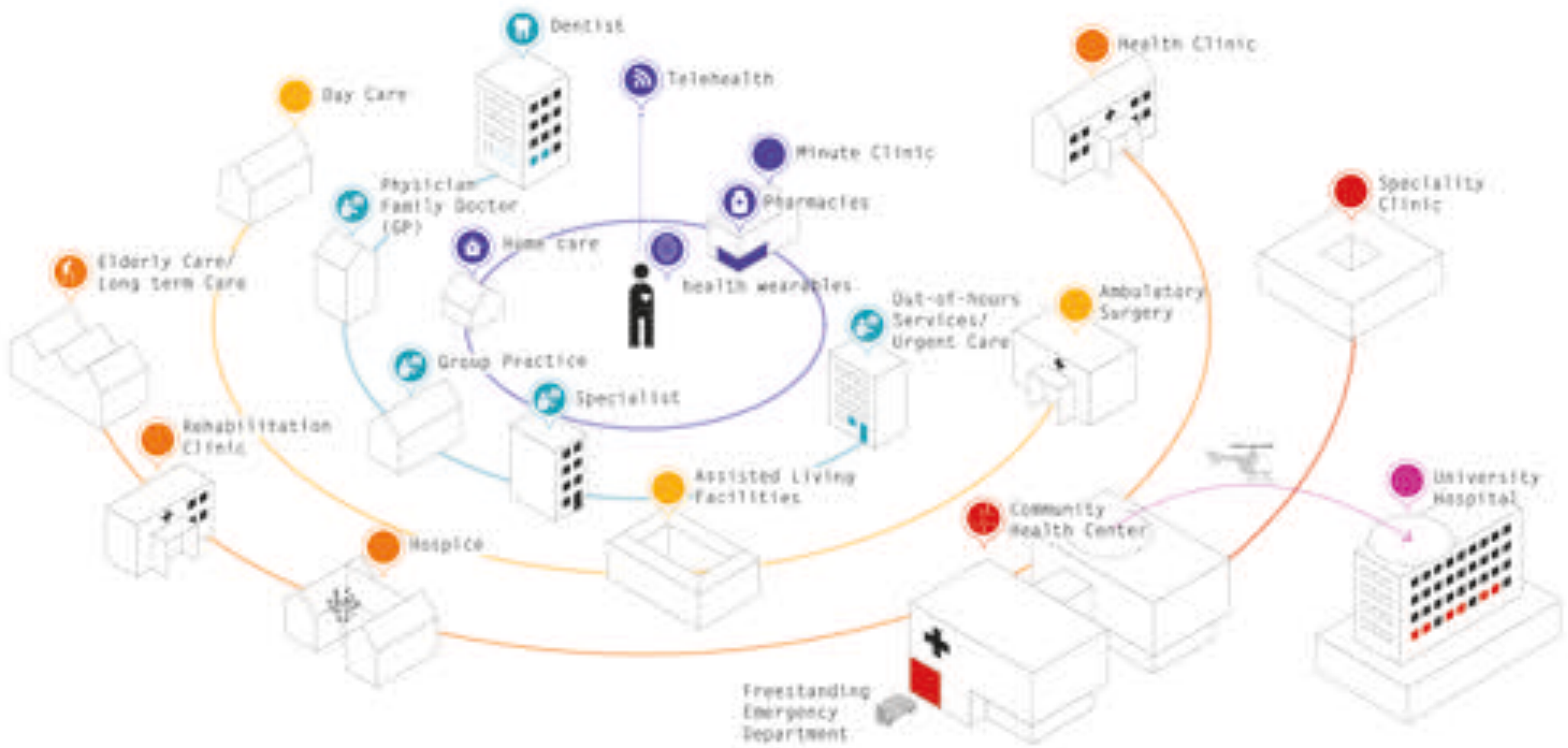






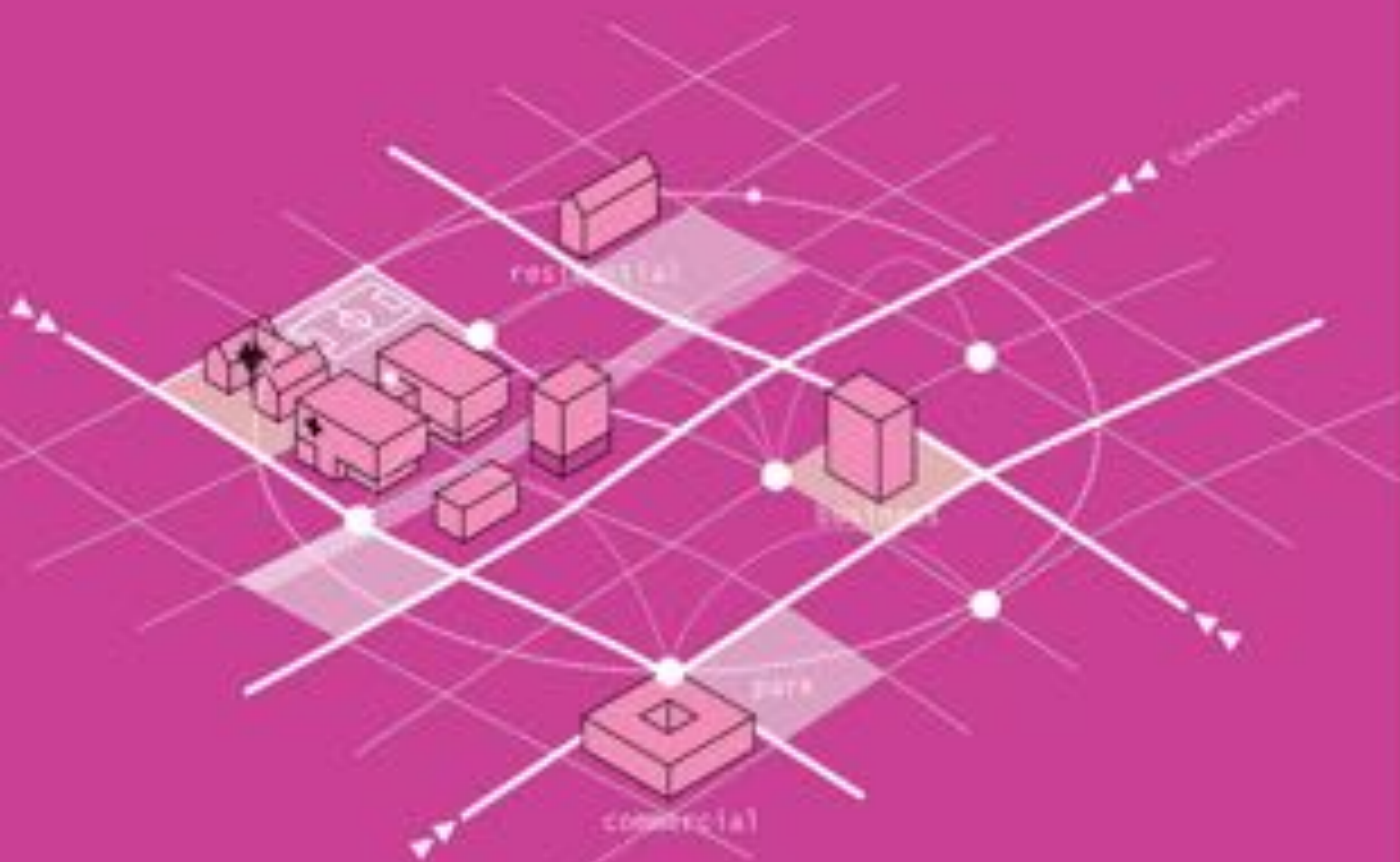


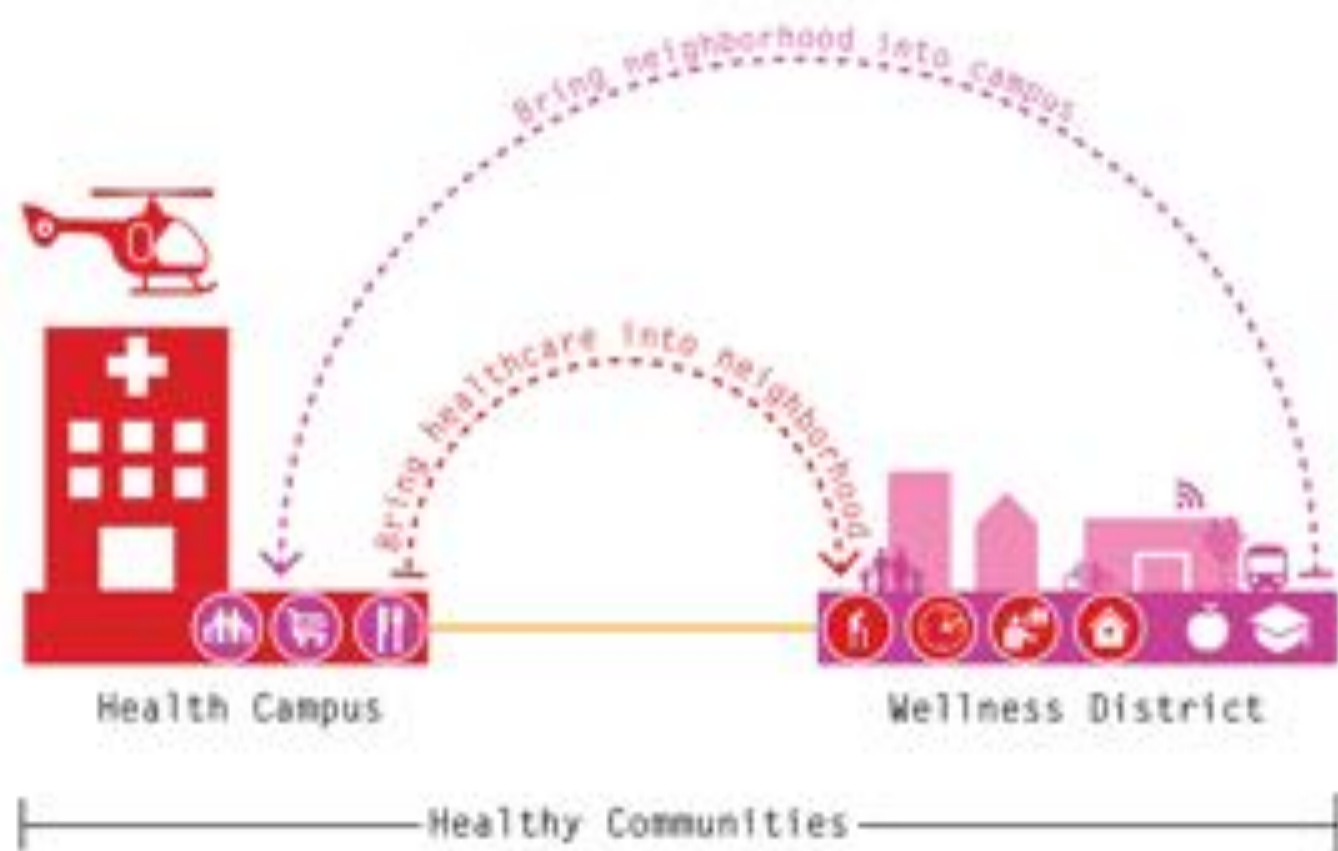






# 03 Healthcare as Infrastructure and placemaking











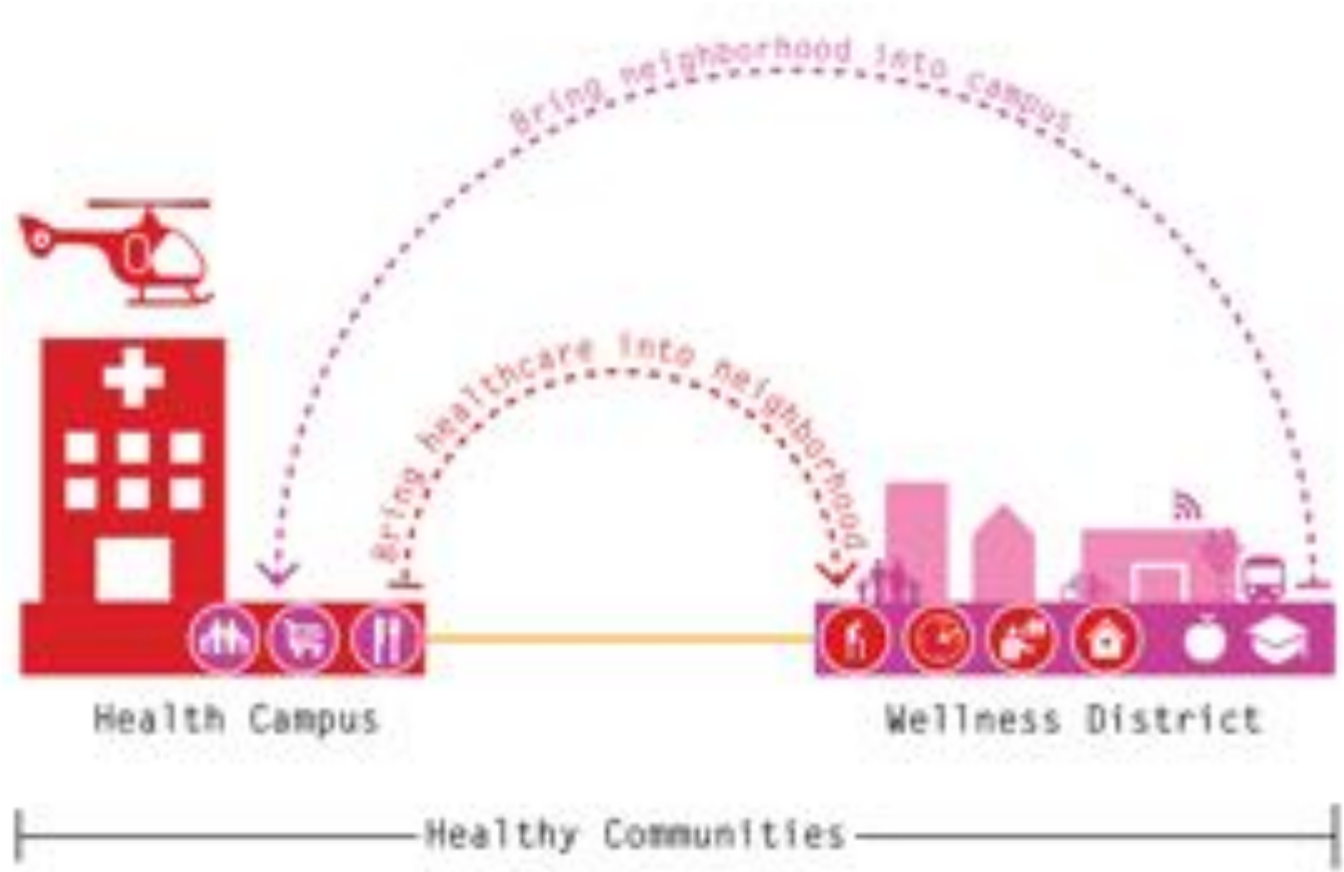








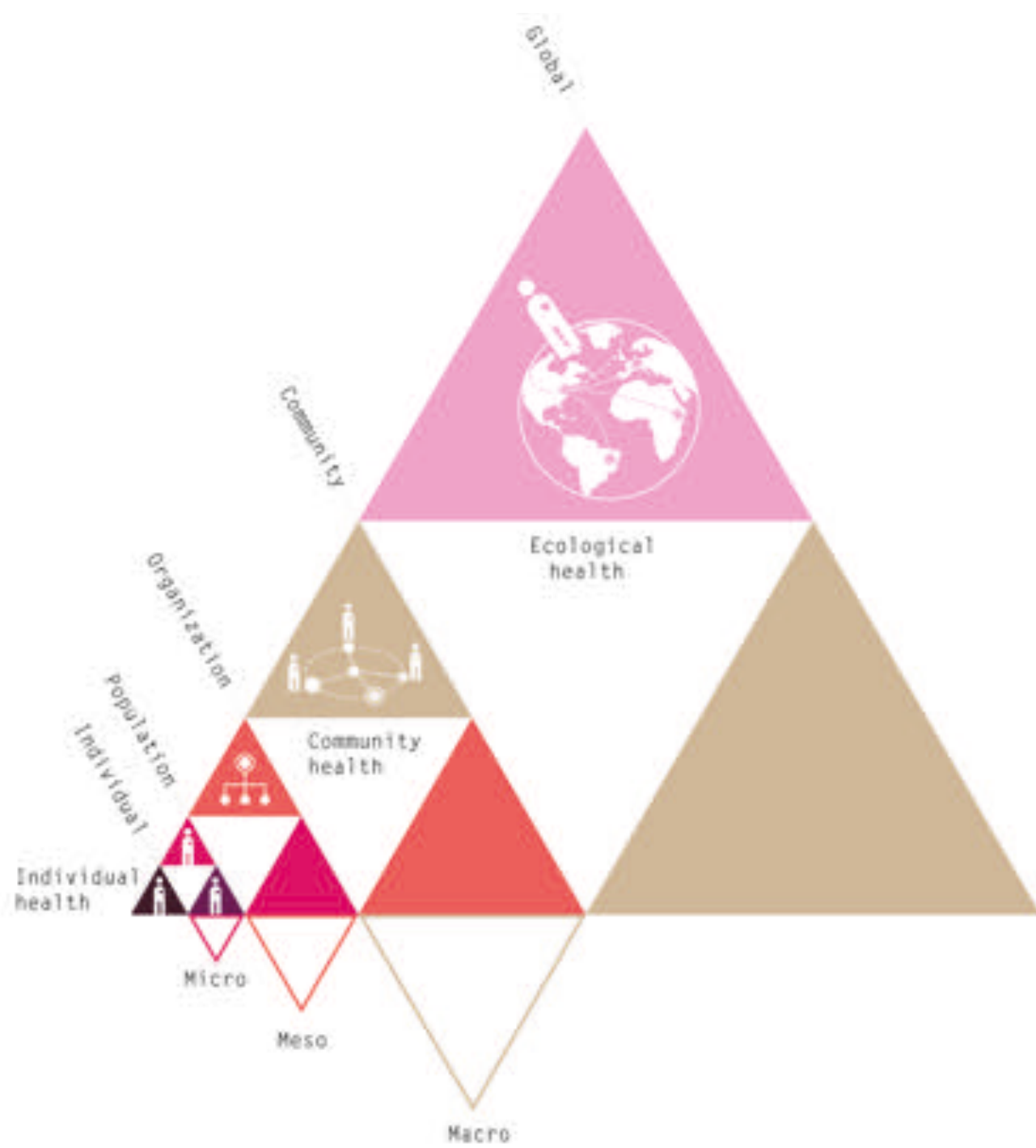




# 02 Resilience and Sustainability

Heinle, Wischer und Partner  
Freie Architekten



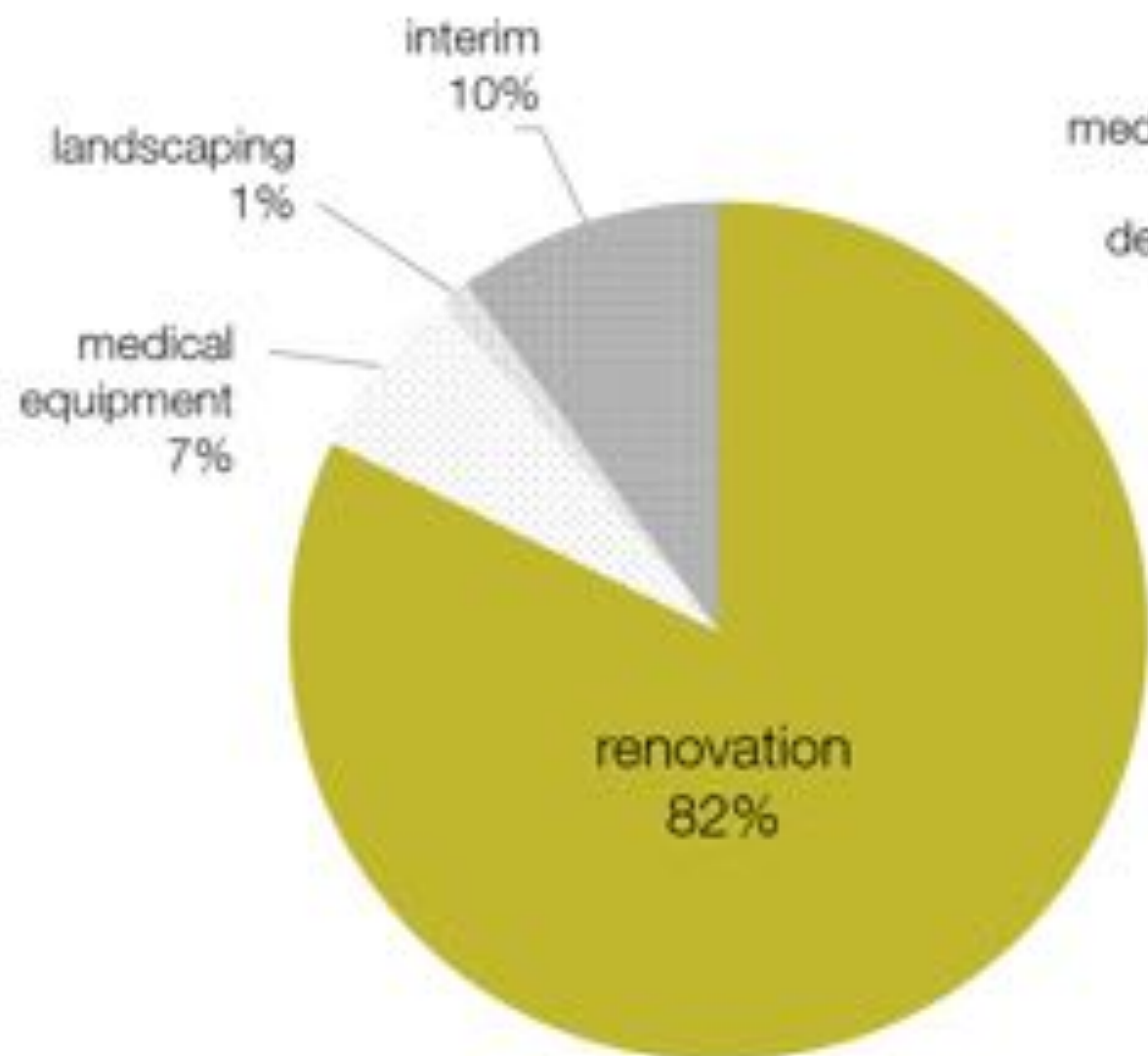




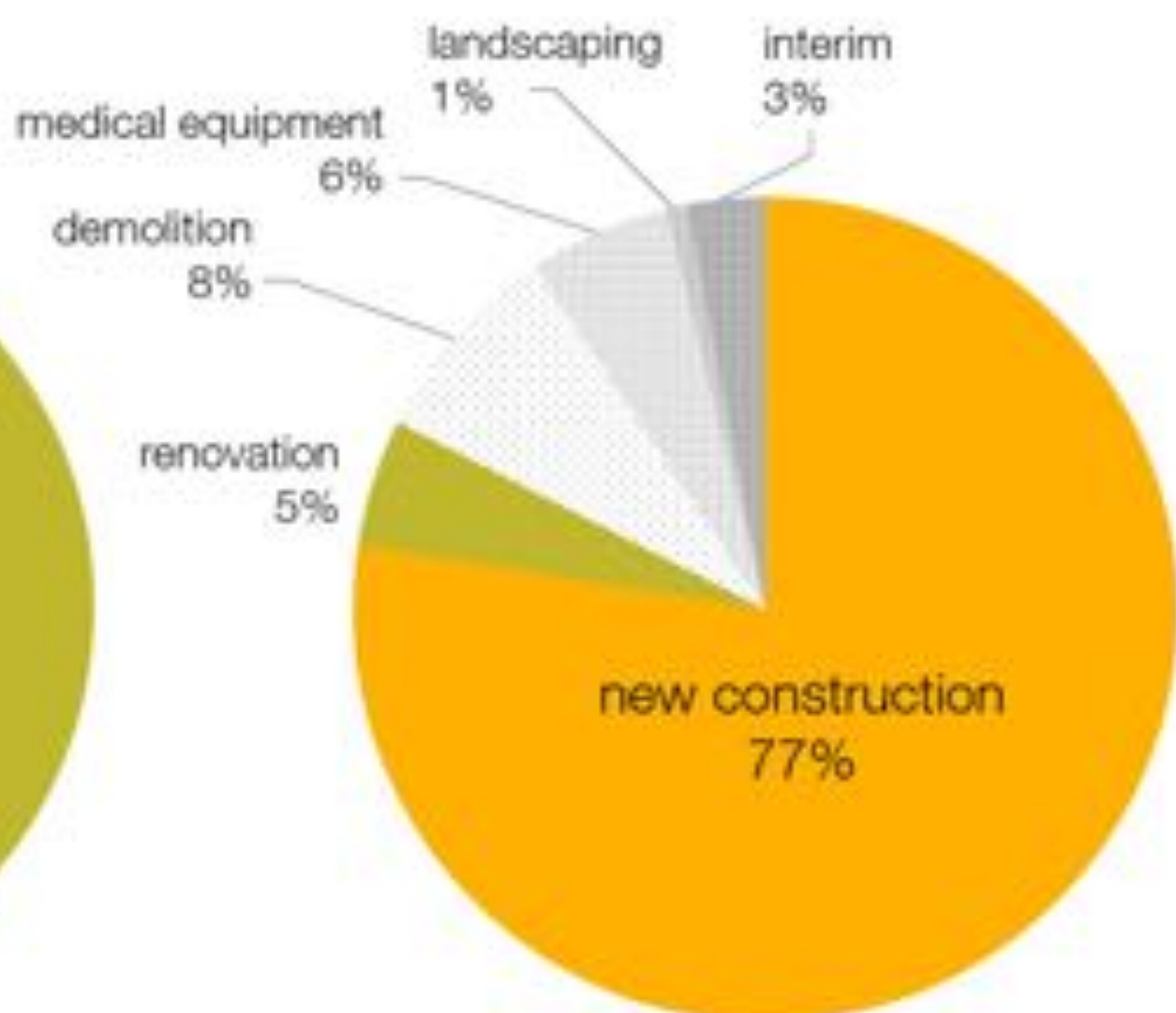


**BE A BEAUTIFUL PLACE**



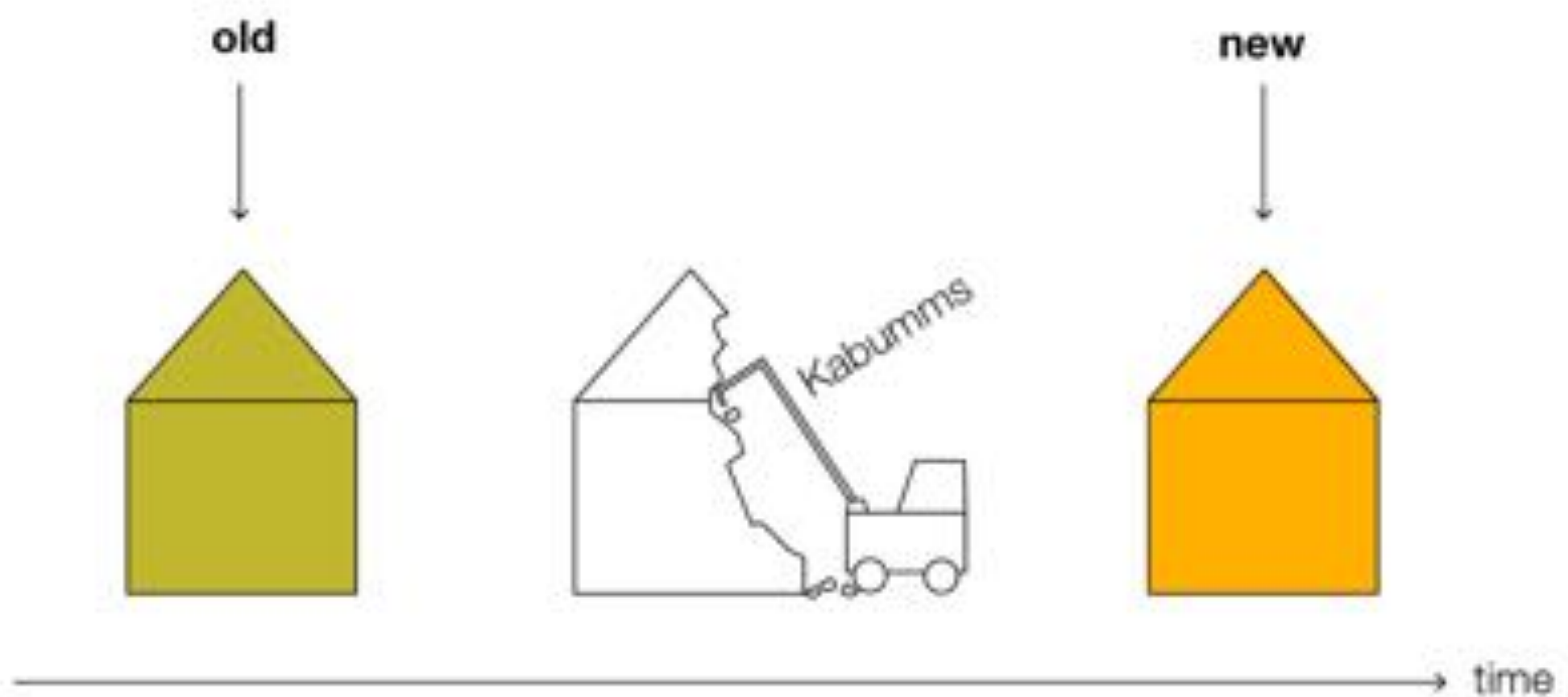


**renovation**



**new construction**

**ratio of costs for renovation vs new construction**



→ better?

worse? ←



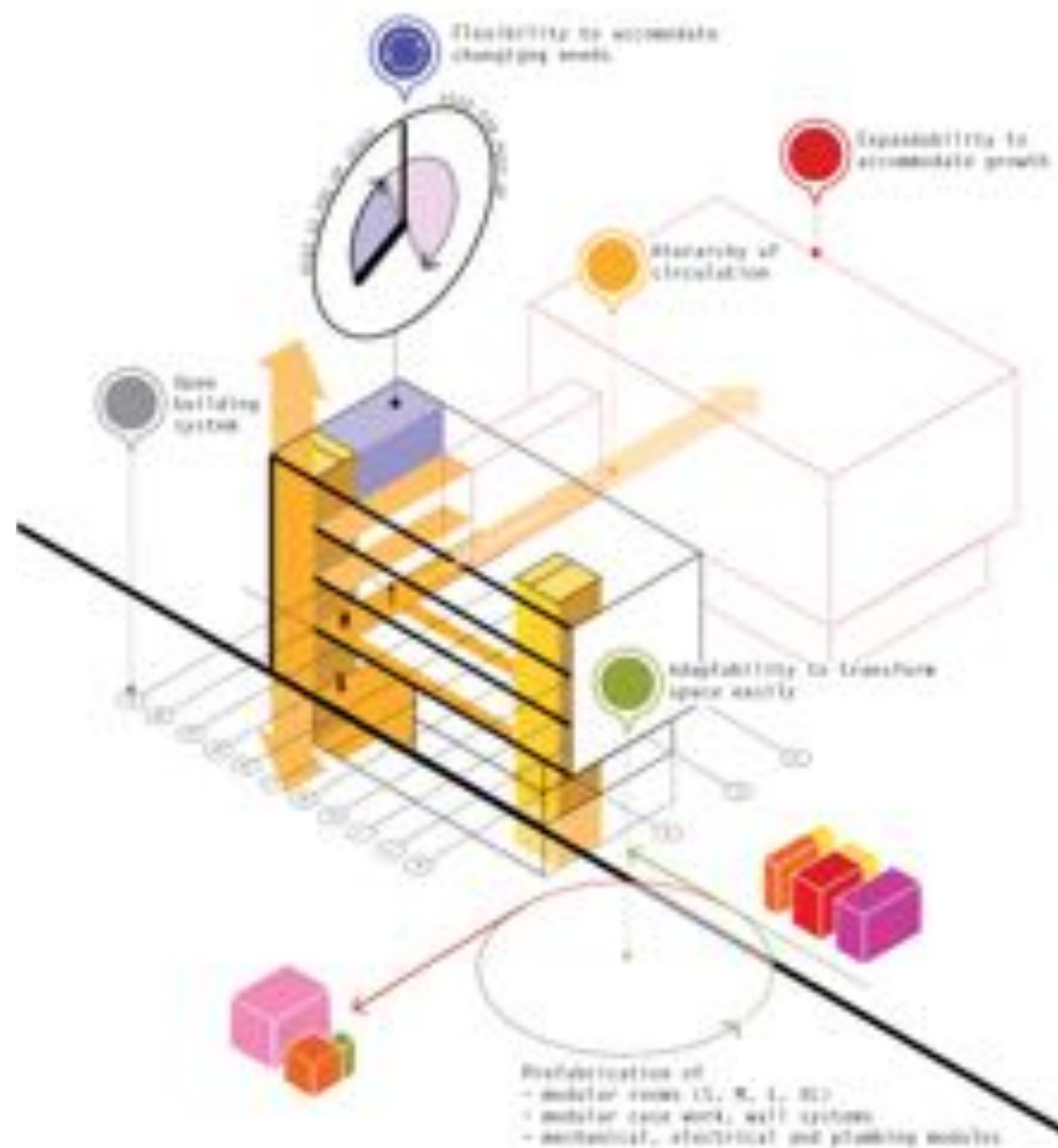
build new

recycle

restructure and remodel

reusing existing





# 04 Pre-test design communication + collaboration



A woman in a red dress is wearing a VR headset and holding a controller. She is standing in a classroom or meeting room. In the background, a woman in a white vest is pointing at a large screen displaying a presentation. The screen shows a blue background with a grid and some text. In the foreground, there is a table with papers, a pen holder, and a small model of a building. The text "KNOWING WHAT YOU GET" is overlaid in the center of the image.

KNOWING WHAT  
YOU GET

An aerial photograph of a residential development. The central focus is a large, multi-story building with a dark grey roof and a prominent chimney. To its right is a taller, brick building with a flat roof. The surrounding area includes paved roads, green trees, and other smaller residential buildings. The text "SIMULATION AND TESTING" is overlaid in white, bold, sans-serif font across the center of the image.

# SIMULATION AND TESTING

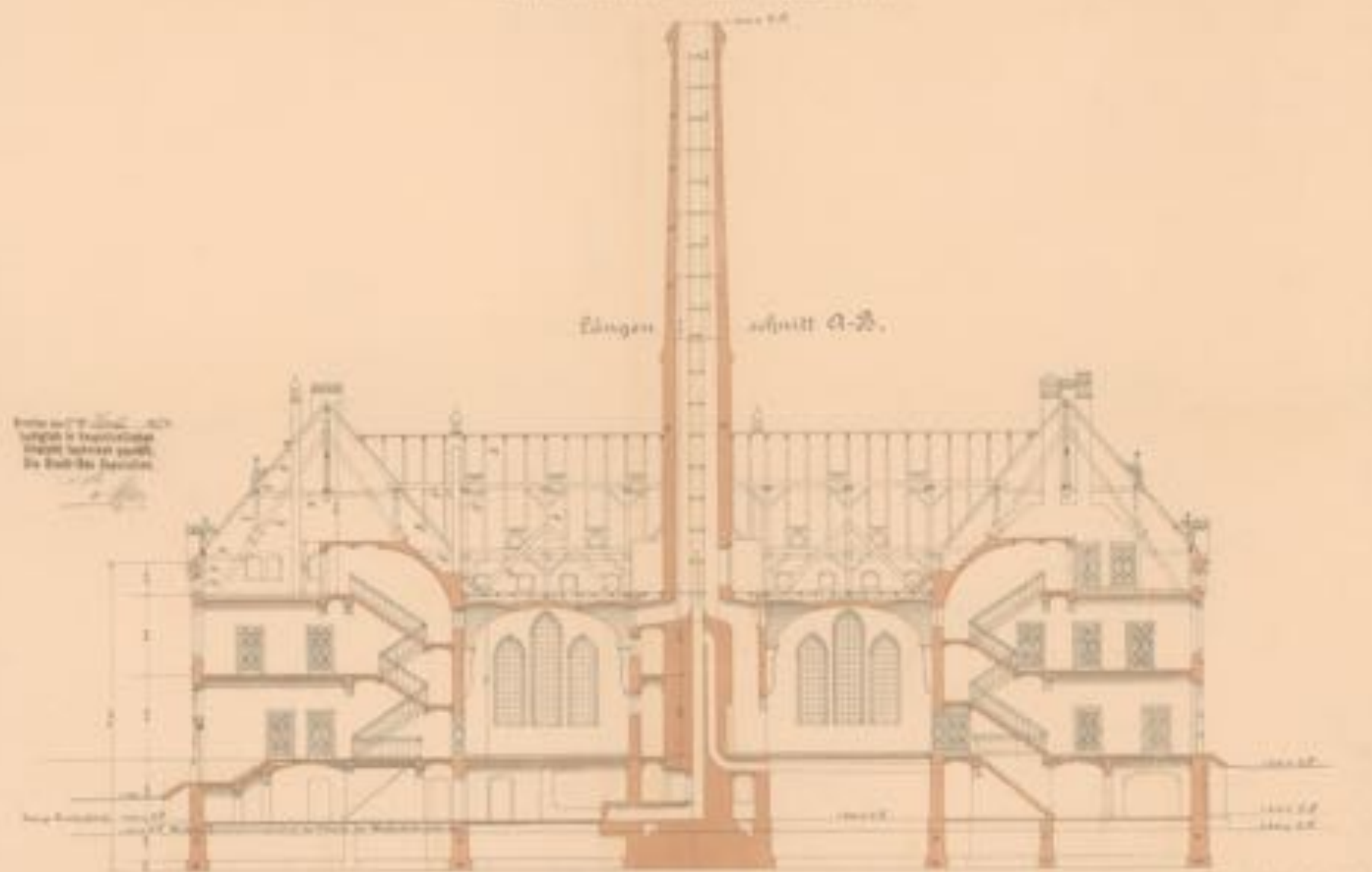




Klinische Vorlesungen der Königl. Universität zu Berlin.

Luft

zum Neubau des Vorkursgebäudes.



Die Luft im Innern  
ist durch die Heizung  
immer wärmer und  
die Luft im Freien  
ist kälter.

Die Luft im Innern  
ist durch die Heizung  
immer wärmer und  
die Luft im Freien  
ist kälter.

Die Luft im Innern  
ist durch die Heizung  
immer wärmer und  
die Luft im Freien  
ist kälter.



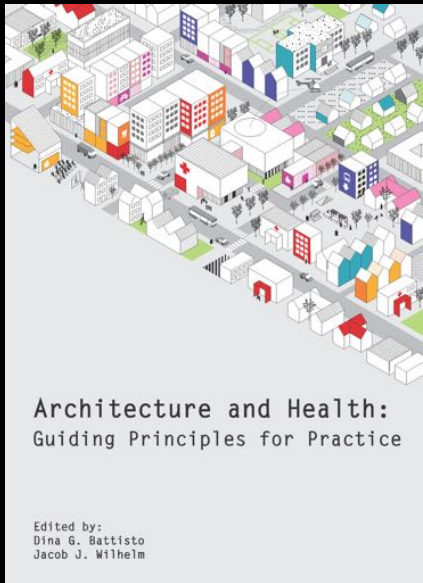


DETROIT  
MUSEUM  
OF SCIENCE  
AND INDUSTRY









Eva Henrich, LEED AP, EDAC  
Architect AKG

Heinle, Wischer und Partner, Cologne, Germany  
[info@heinlewischerpartner.de](mailto:info@heinlewischerpartner.de)