

Nora Claudio-Familiar, Architect, NBBJ



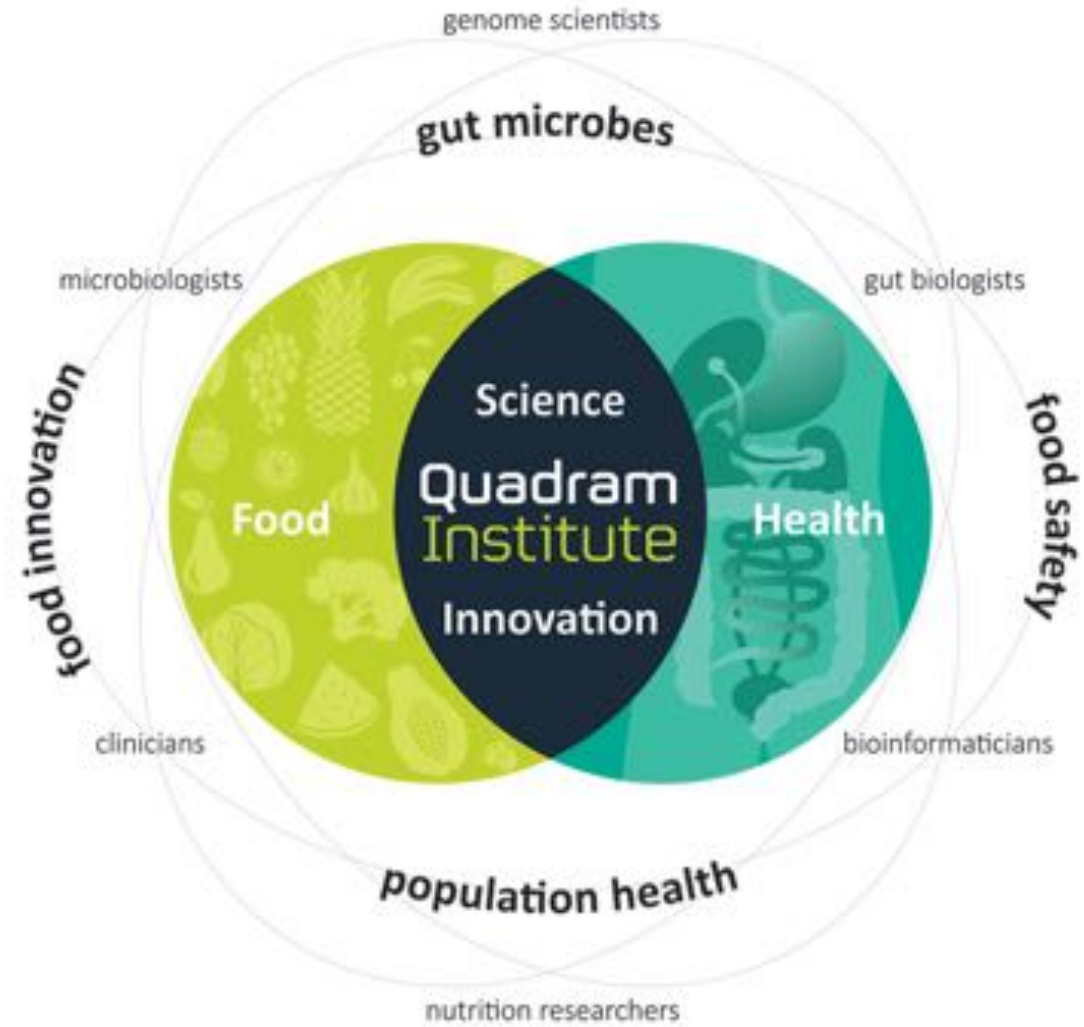
Dr. Nick Goodwin, Programme Manager, Quadram
Institute



Why?	Vision
How?	Bringing Together
What?	Functional Delivery
Future	Changing Outcomes



Creating new interfaces
between food science,
gut biology, human
health and disease



Norwich Research Park



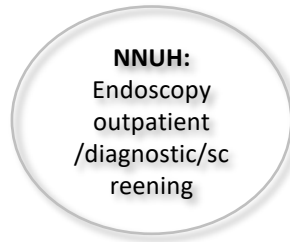
A shared vision

- Enhance collaboration
- Attract talent
- Deliver new clinical therapies
- Drive commercial value
- Contemporary, purpose built accommodation

Collaboration



Norfolk and Norwich
University Hospitals
NHS Foundation Trust



Endoscopy



Research



Clinical Research



Catalyst for the Quadram Institute



↓
Outdated building



+



↓
Dispersed clinical trial
space around park



↓
More space



Unlock funding

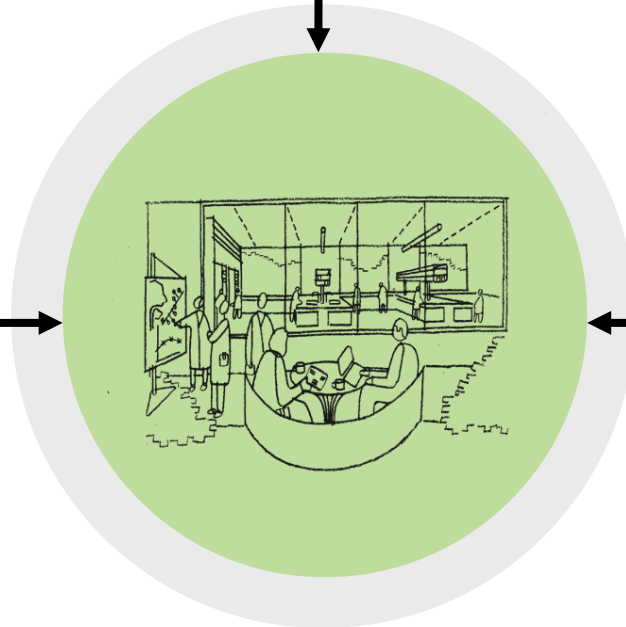
Setting up a new home



Connected in new
space



New research techniques
and technologies



Accommodating growing
bowel screening
programme

Visioning

- PHD students
 - Researchers
 - Laboratory managers
- Clinicians
 - Nursing staff
 - Senior Managers



“To create a world leading multidisciplinary research community.”



“To grow the world’s capacity in Food and Health Research.”



“Engagement with a wider audience and social activity spaces.”

A new home for scientists, clinicians and visitors



New Endoscopy Unit

- Doubles the present capacity
- Facility for 40,000 patient units



New Research Institute

- Research facility for 300 staff
- Commercial R&D

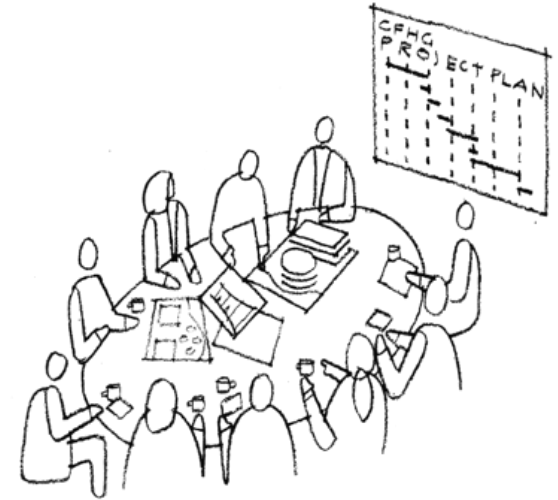


New Clinical Trials Unit

- Multi-functional facility

Challenges of developing a new home

1. 3 distinctive functional requirements
2. 3 different communities
3. Accommodating diverse needs
4. Developing a consistent and integrated design



The Quadram Institute

Size:	14,000sqm
Completion Date:	July 2018
Accommodation:	Europe's largest Endoscopy Unit, 400 research scientists, clinicians, and staff



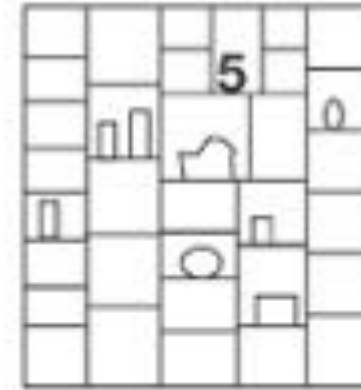
Key drivers



Strong identity



One Building



Showcasing



Collaboration

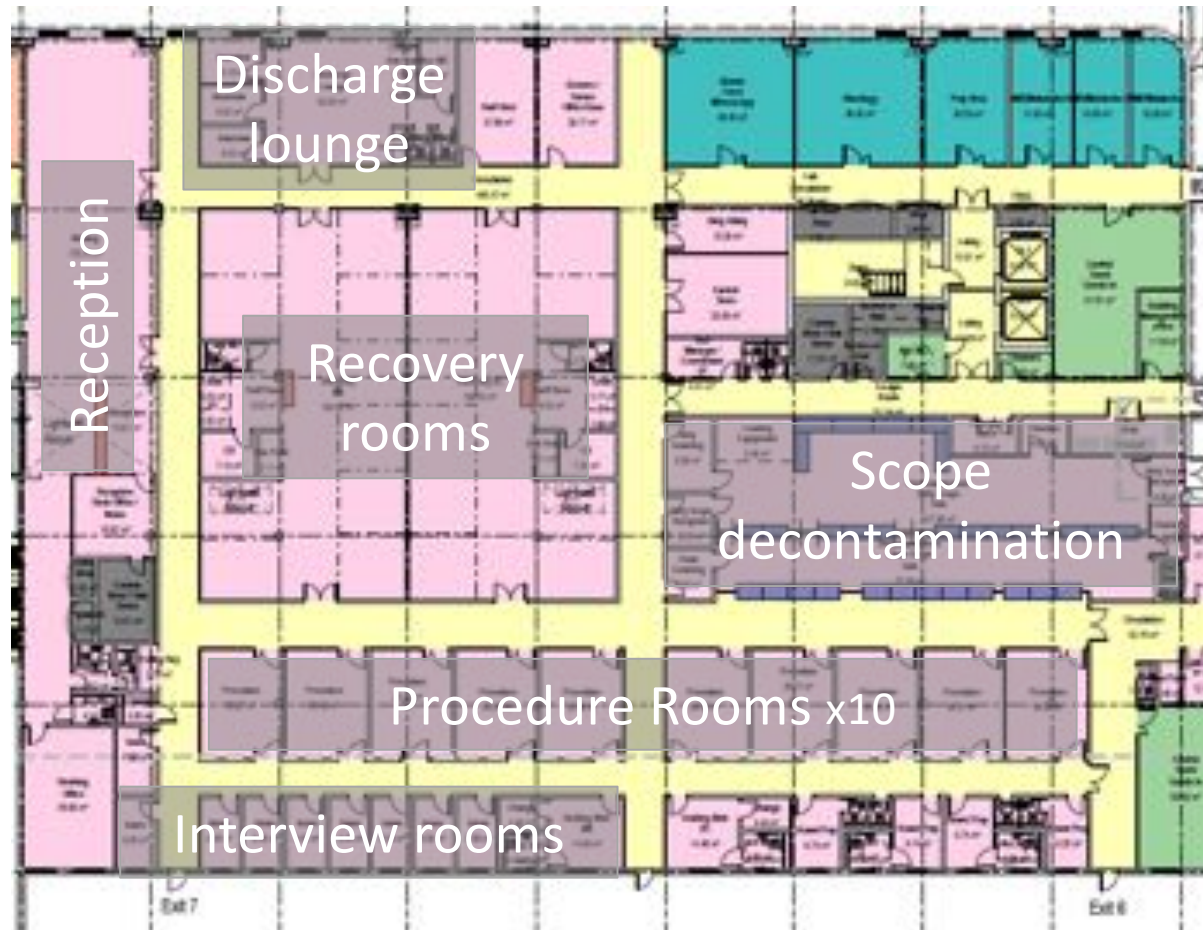


Flexible

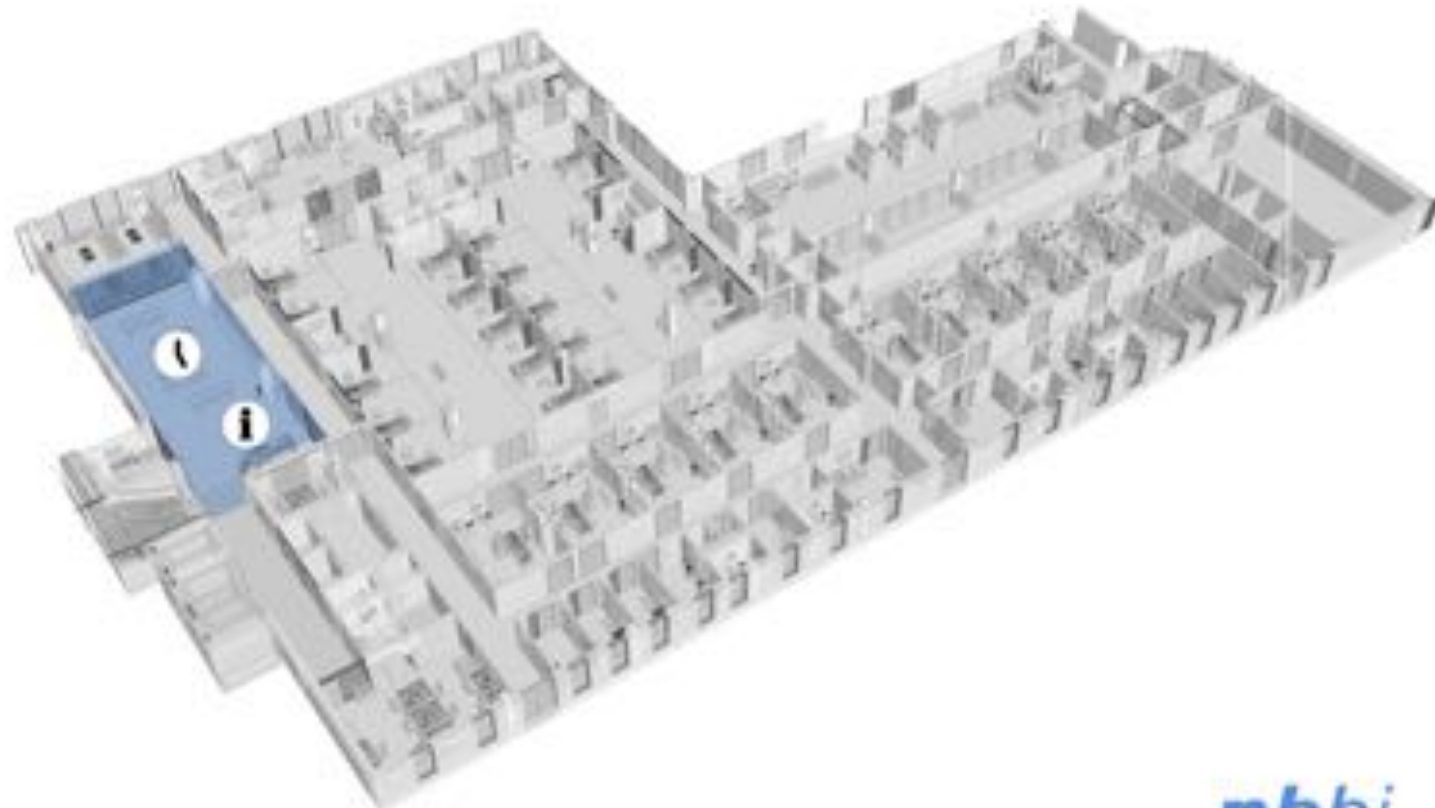


Sustainable

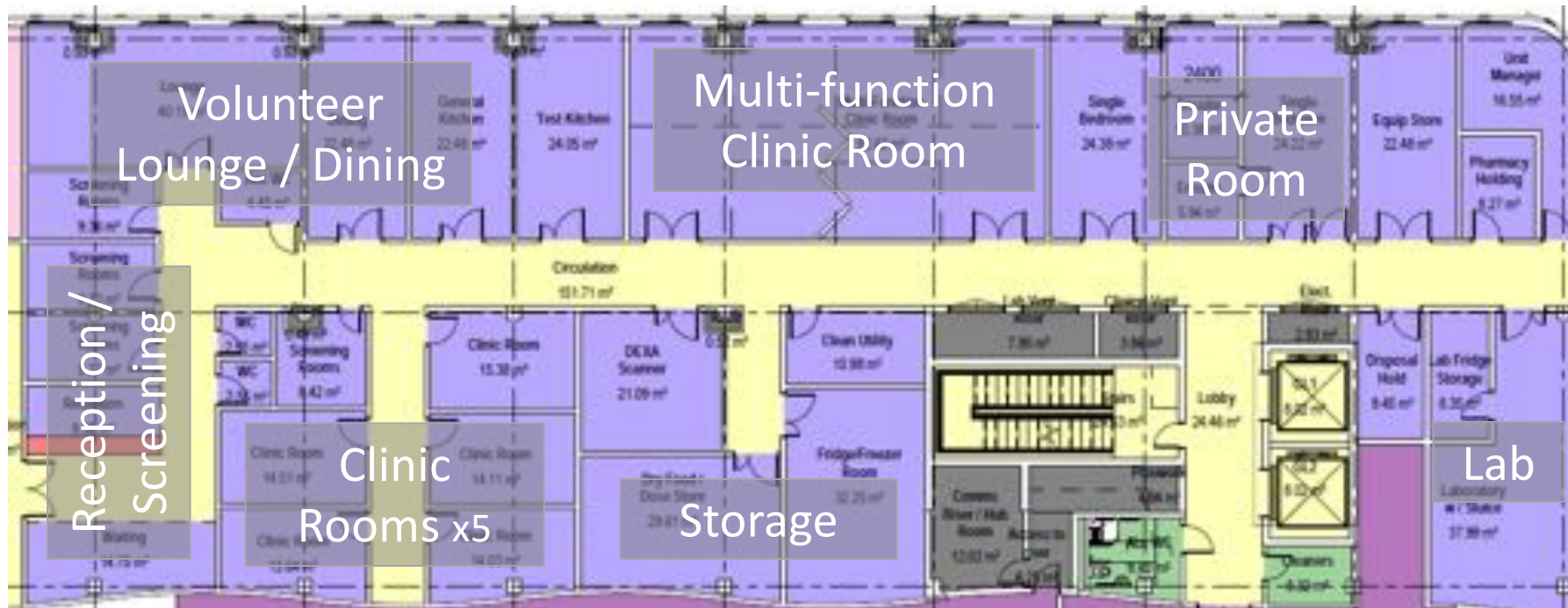
Endoscopy Units Lower Ground Floor



Endoscopy Flow Analysis Tool

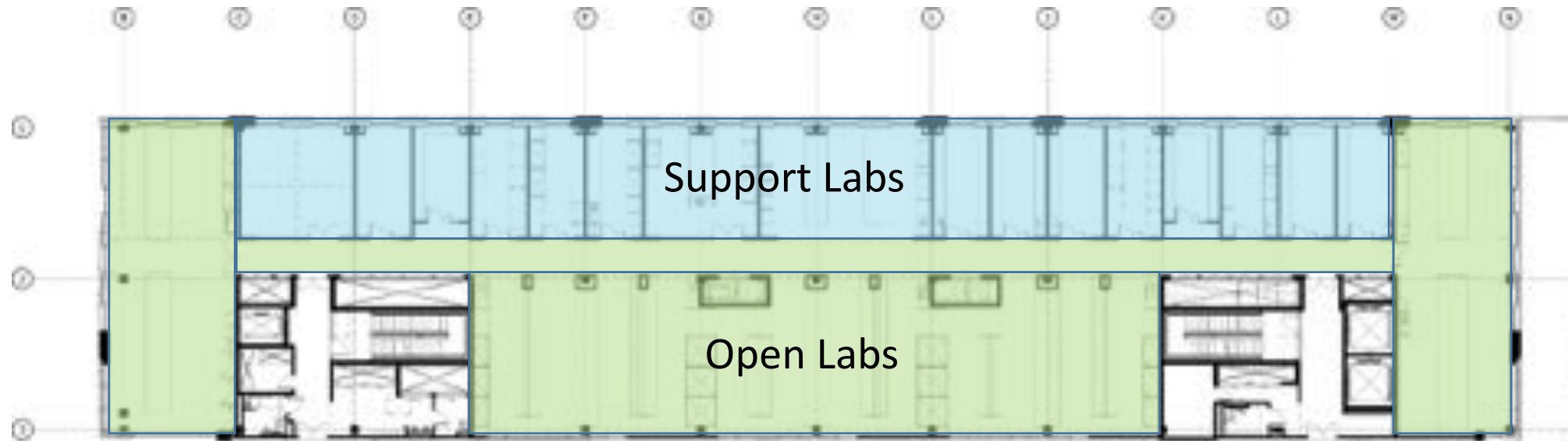


Clinical Trials Upper Ground Floor



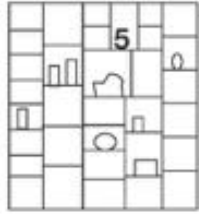
Laboratories

First and Second Floor

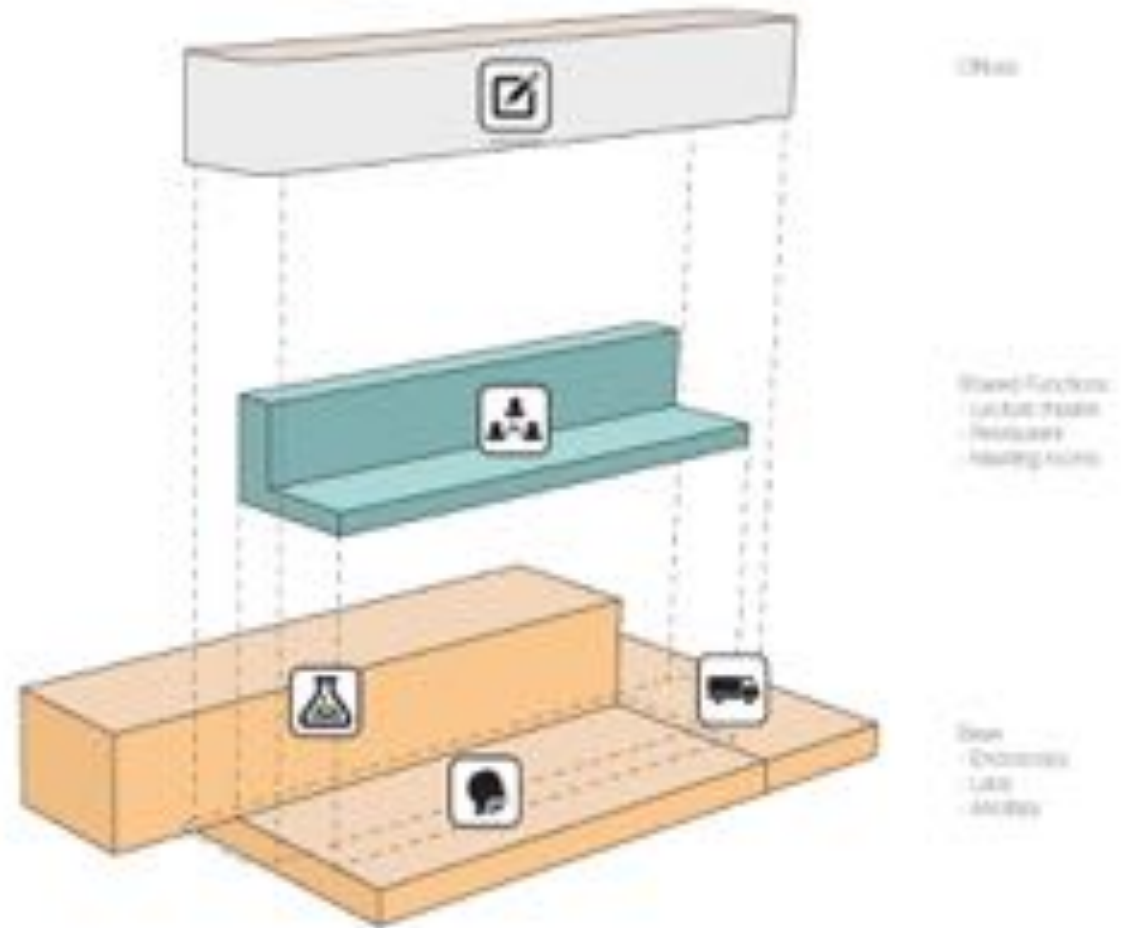




Collaboration



Showcase

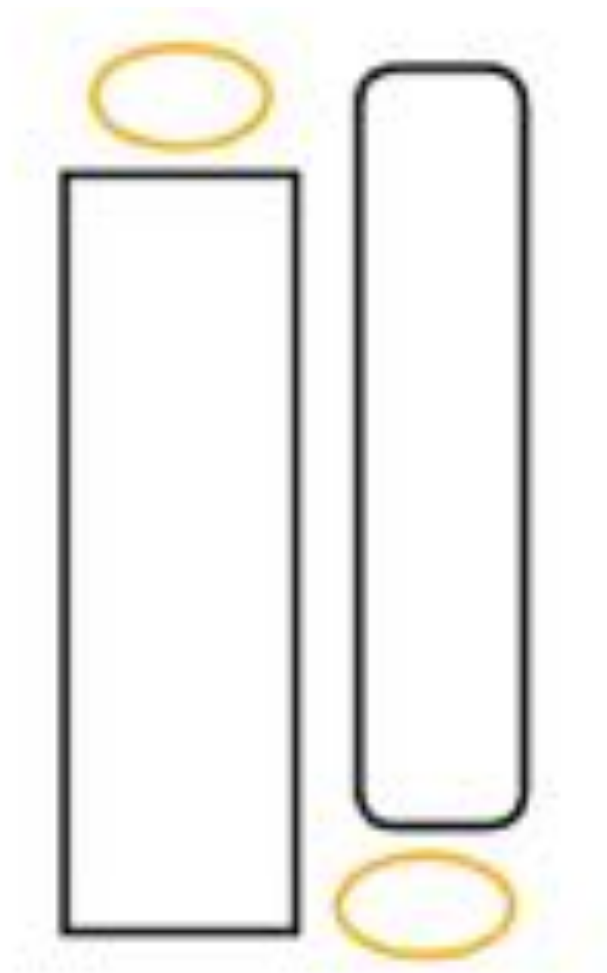




Identity

ONE identity
ONE address
ONE door
ONE BUILDING

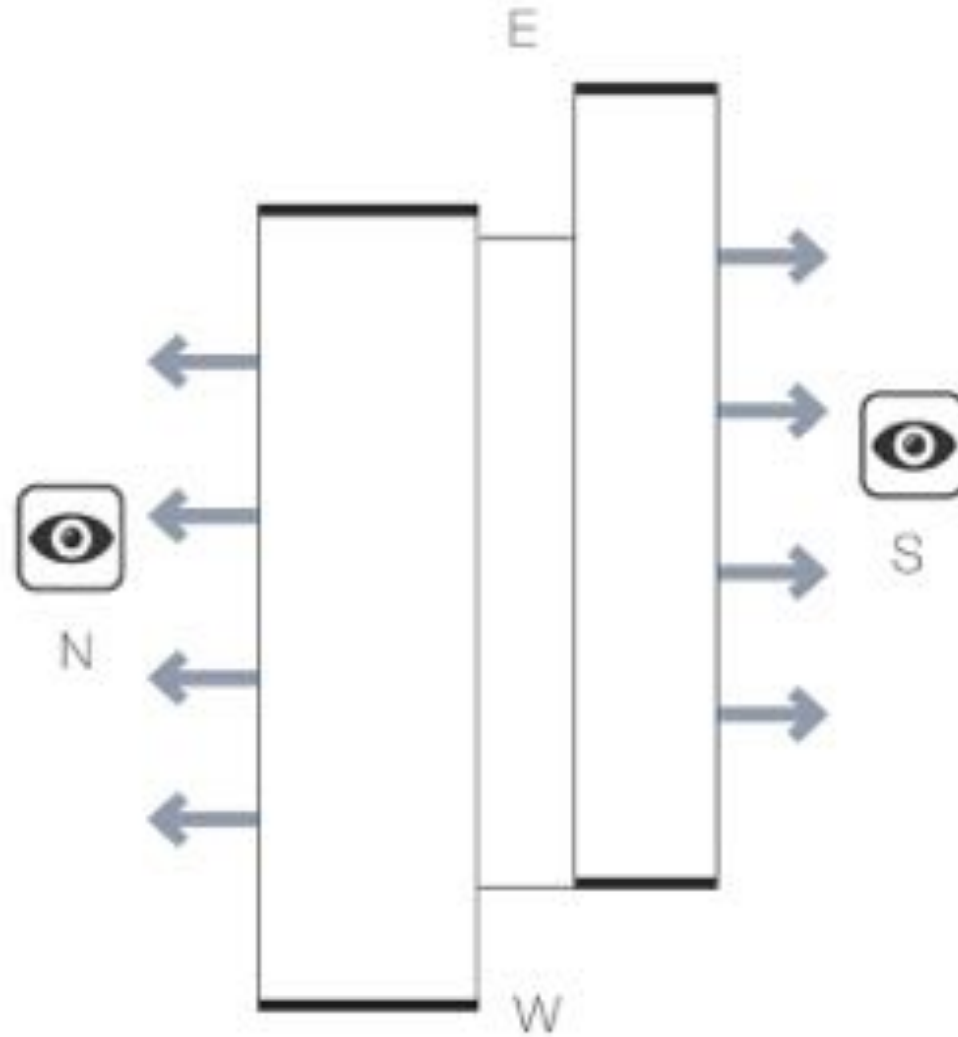
One Door



Create arrival and service
spaces



Sustainable



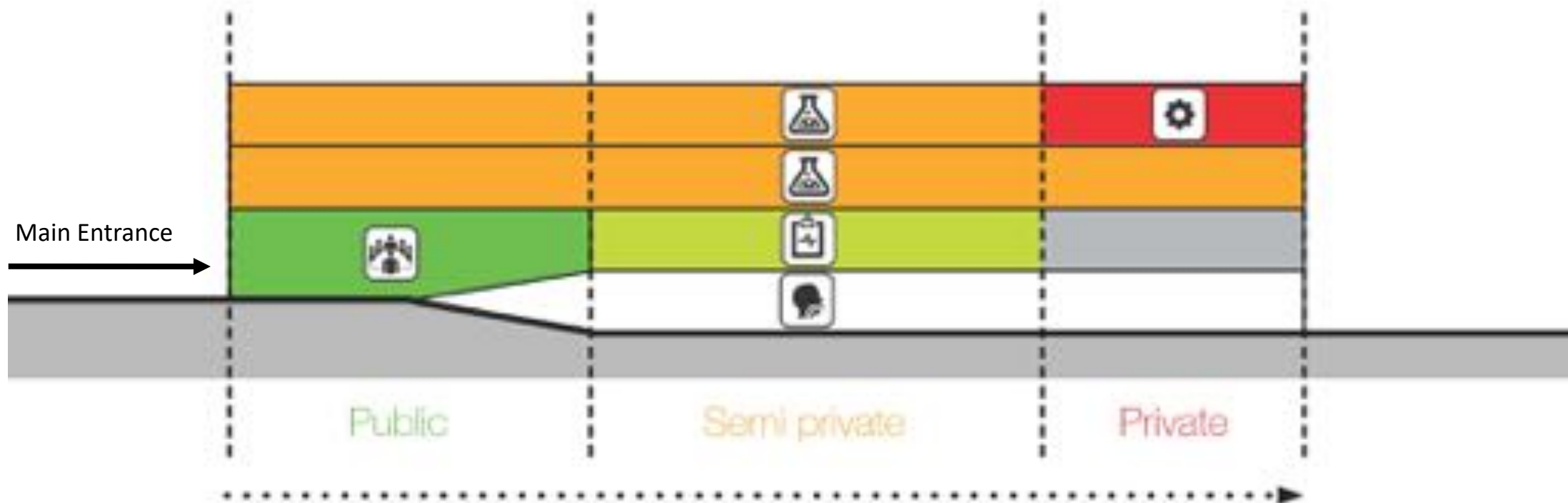
Orientation of the building



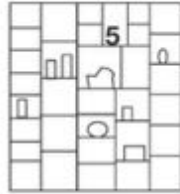
Flexible



Sustainable

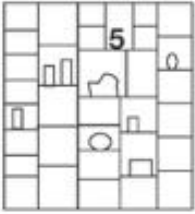


From public to private

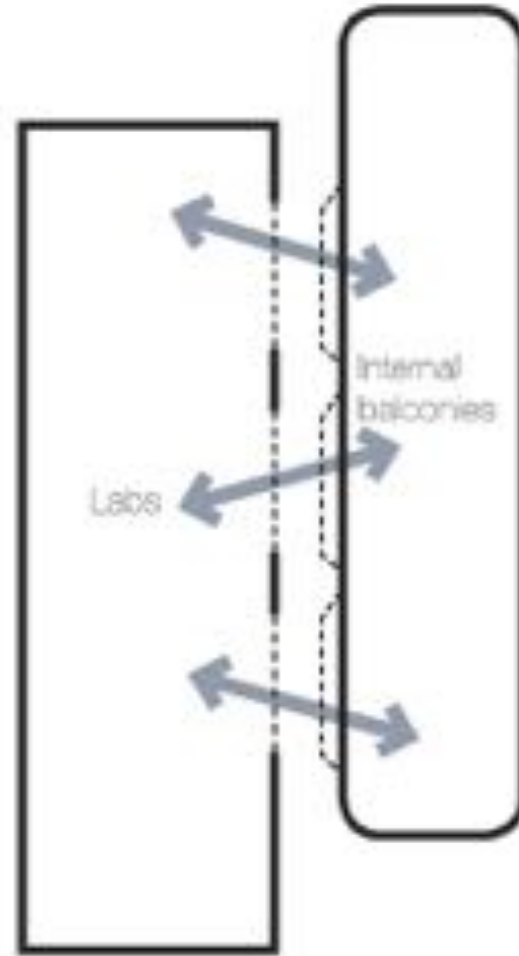


Collaboration Showcase



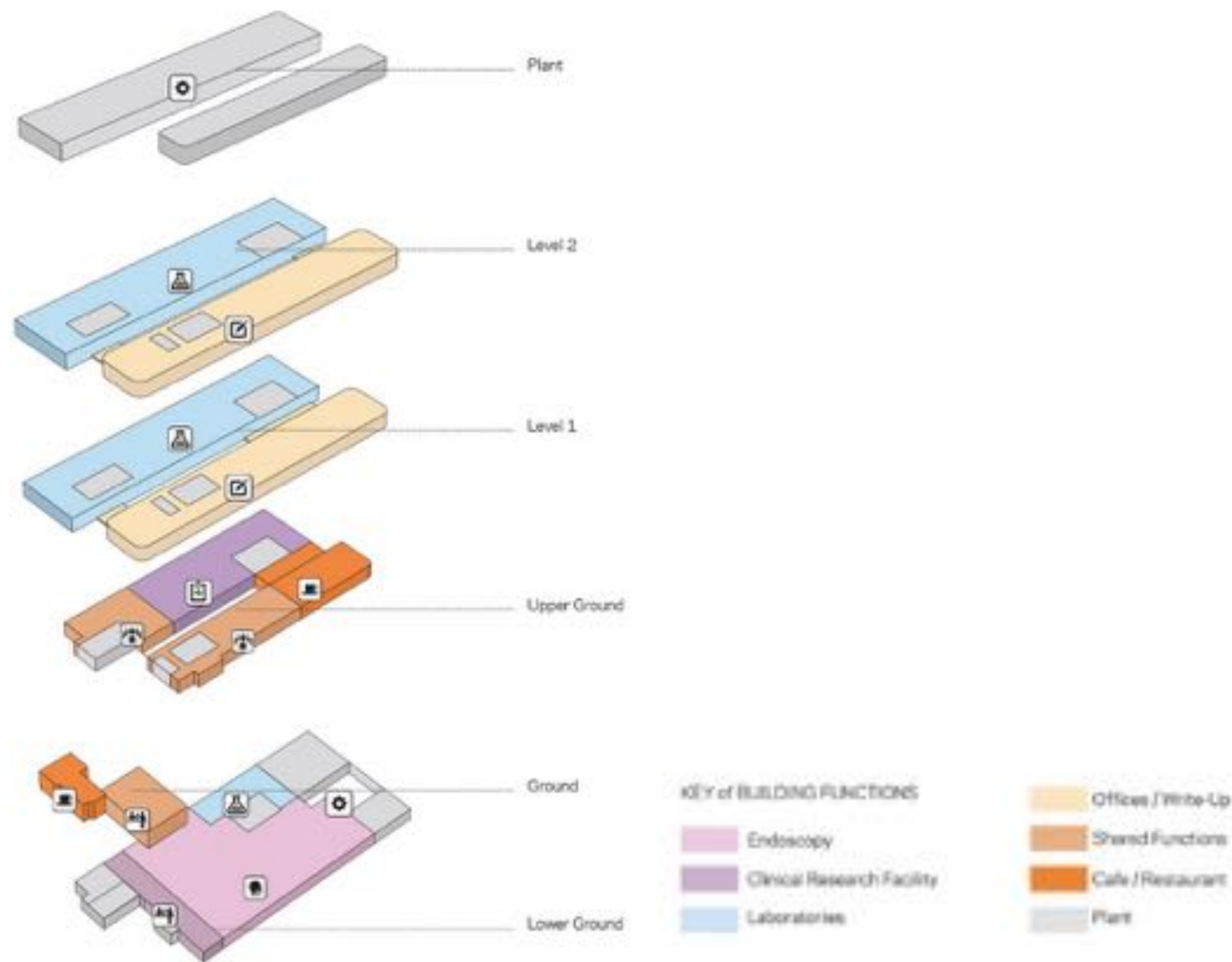


Showcase



Collaborative spaces

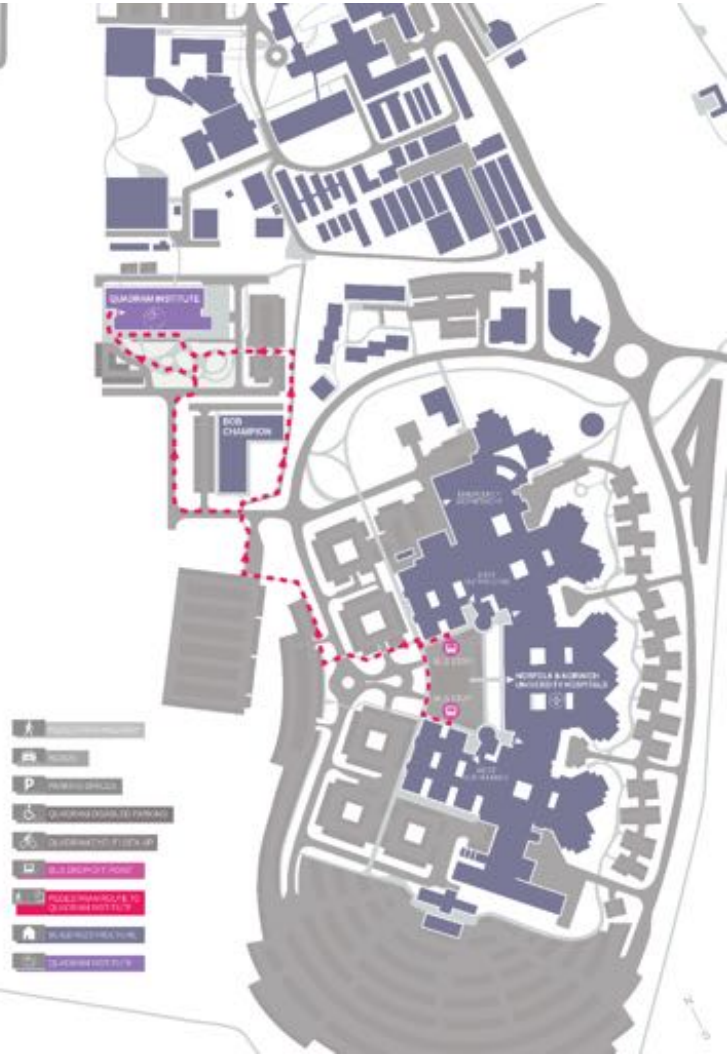
Organisation



A new home



Connecting to the wider Norwich Research Park campus



One building, one door



Developing a shared vision



Collaboration and connectivity



Attracting talent



Attracting talent



Endoscopy Unit



Looking ahead – next generation research

- Bringing together diverse disciplines under one roof
- Setting the benchmark for future science institutes
- Revolutionising the way we research and apply findings



Creating for the future

High performing spaces

Blending functions

Shared amenities

Mixed community

Discovery

Staff retention

Attracting talent

