

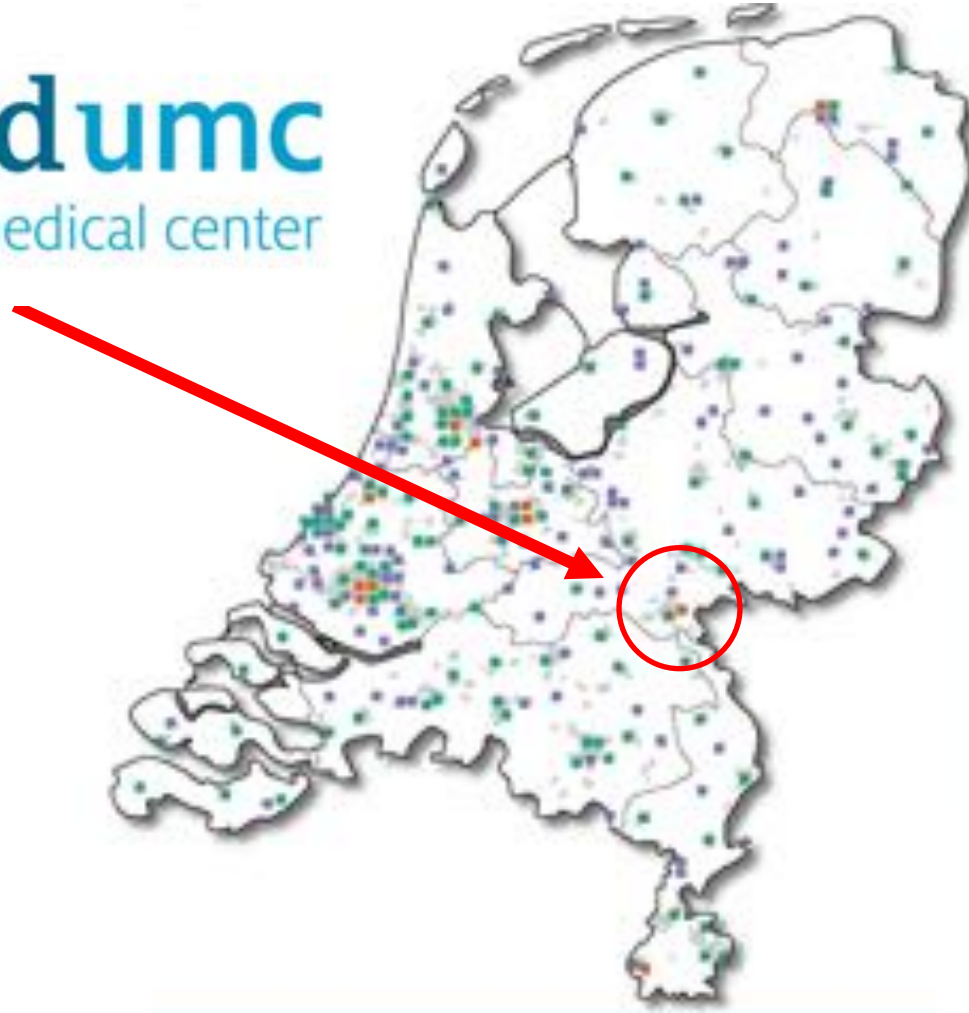


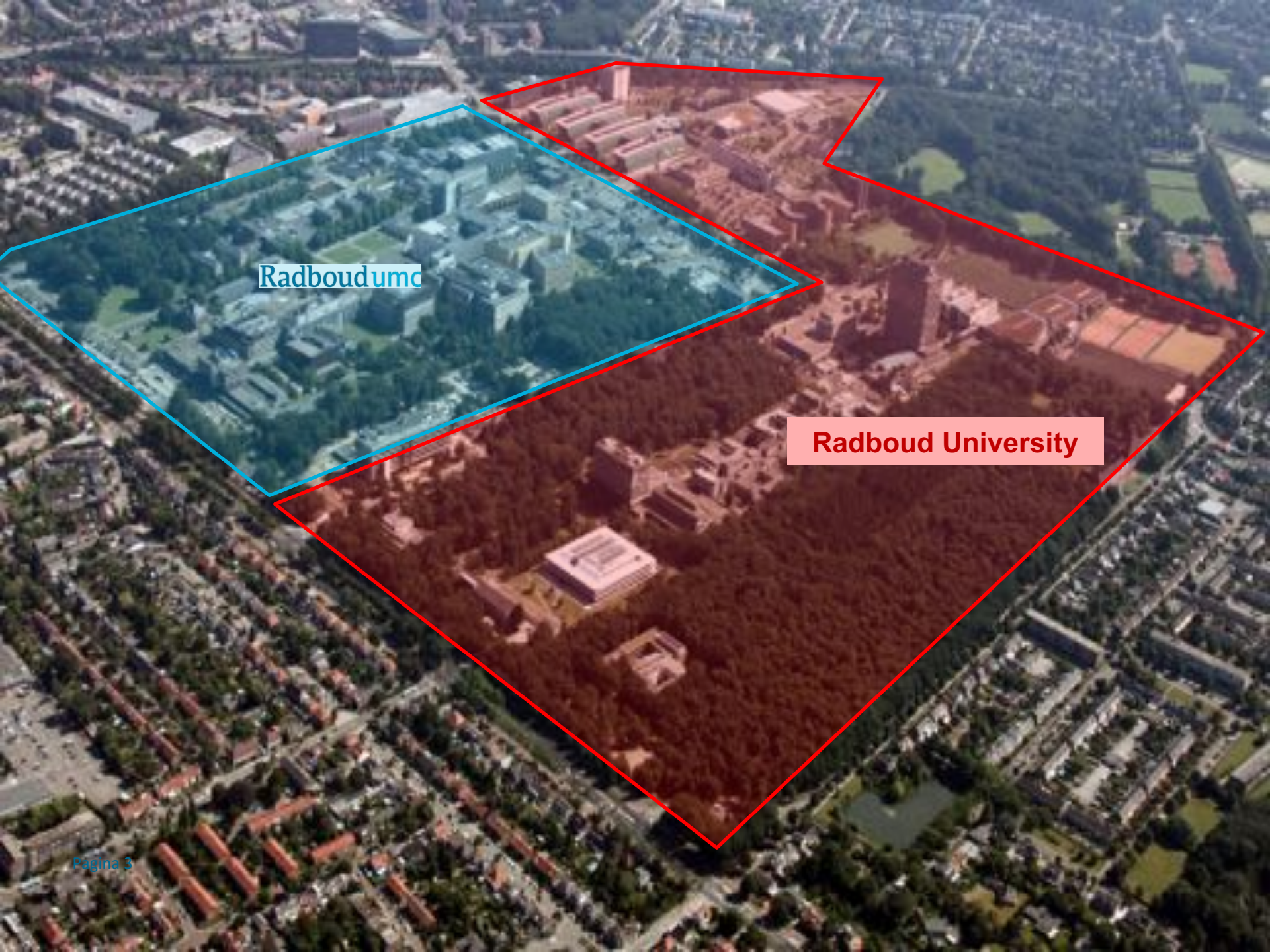
Personalized Healing Environment by Bricks, Bytes & Behaviour



We are 1 of the 7 UMCs in the Netherlands

Radboudumc
university medical center





Radboudumc

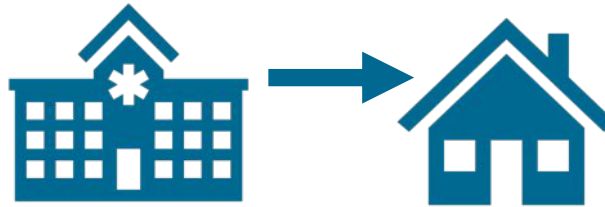
Radboud University

Business Case 2030: Research on 6 Topics

Population



Changes Healthcare models



Funding



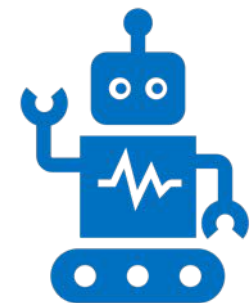
Research



Education



Technology



Percentage BNP dat wordt uitgegeven aan gezondheidszorg

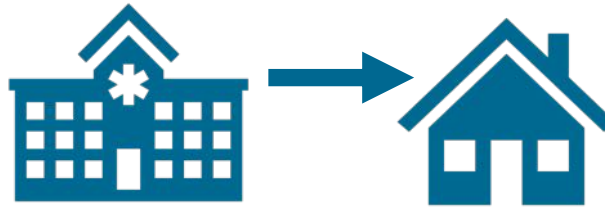


Business Case 2030: Research on 6 Topics

Population



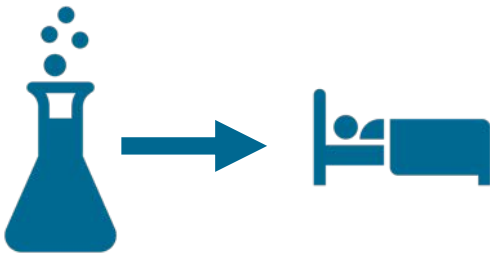
Changes Healthcare models



Funding



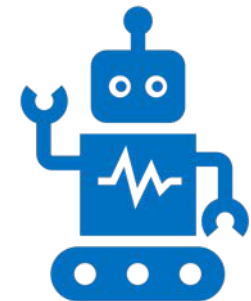
Research



Education



Technology

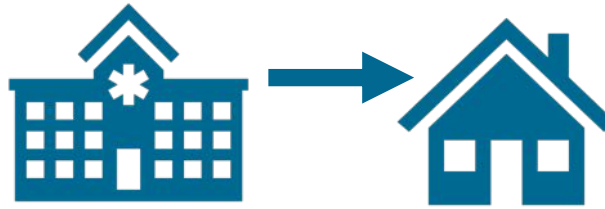


Business Case 2030: Research on 6 Topics

Population



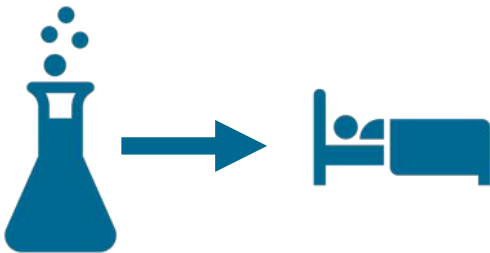
Changes Healthcare models



Funding



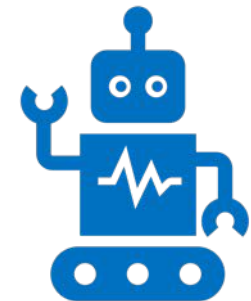
Research



Education



Technology



**‘Fewer bricks,
more bytes and
different behaviour’**



100.000 m2 less



2015



2025



Design Principles

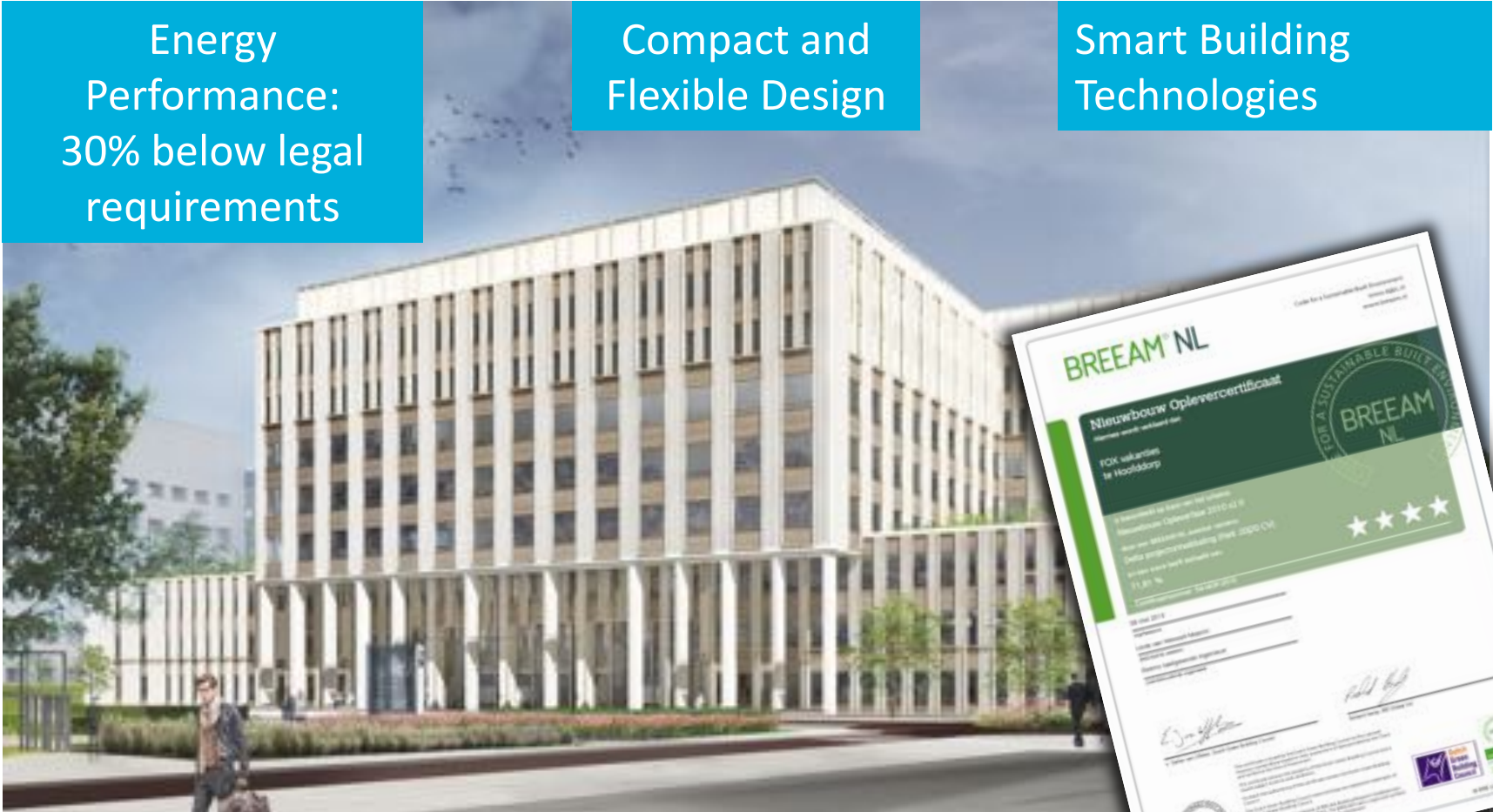


Sustainable Design

Energy Performance:
30% below legal requirements

Compact and Flexible Design

Smart Building Technologies



Lots of Daylight

‘Materials Passport’



Smart Hospital Technology

1. Track & Trace of Person and Medical Equipment
2. Patient Entertainment
3. Continuous Monitoring
4. Interactive Displays
5. Next Generation Nurse Call



Healing Environment, EBD, Radboudumc Look & Feel

Healing Environment, EBD, Radboudumc Look & Feel



Transparency

Nature

Curiosity

Healthy

Personalized

Professional+

New Building "S"



Daylight



Entrance



Waiting Becomes Experiencing



150 single bedrooms at wards

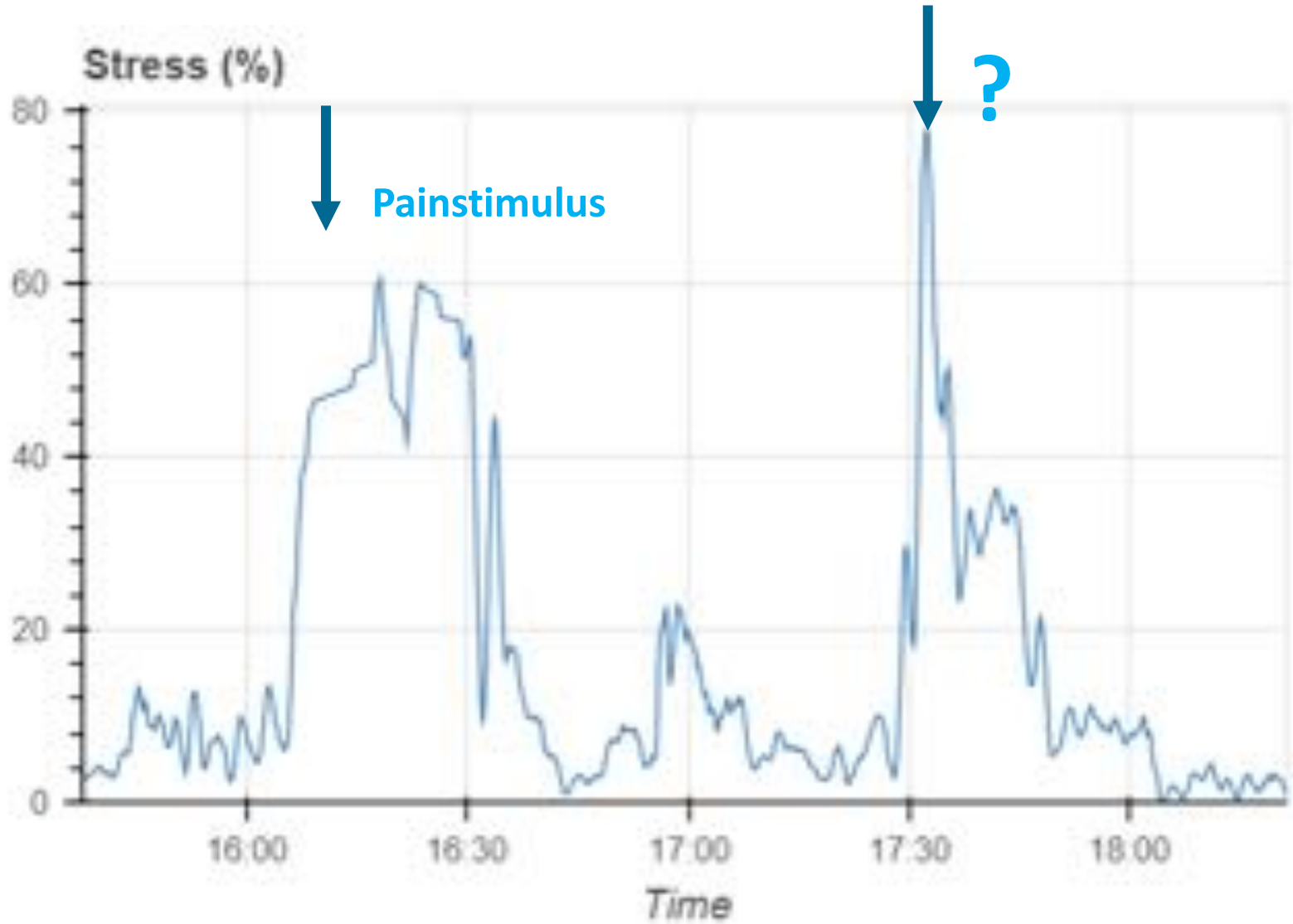




**GOOD IS NOT ENOUGH
IF BETTER IS POSSIBLE
MORE PERSONALIZED**



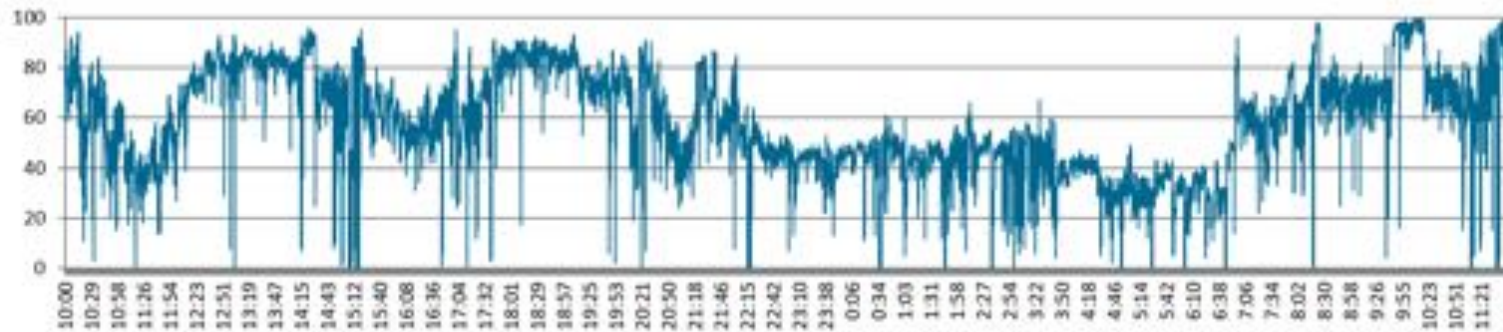
17 ex-patients admitted 24 hours



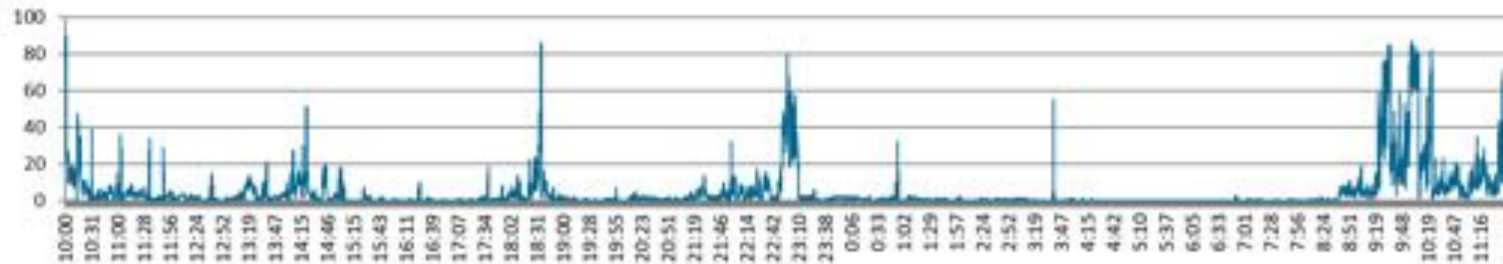


**View is boring
and confronting**

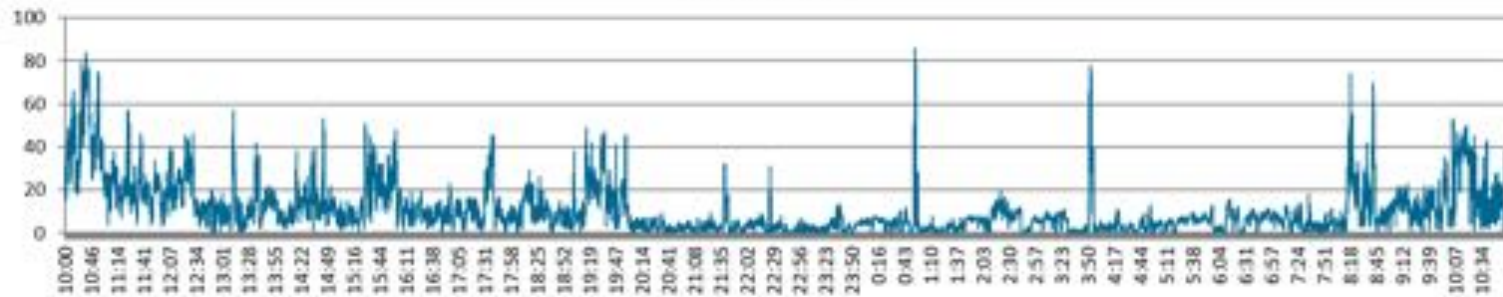
Stress Level



Stress Level

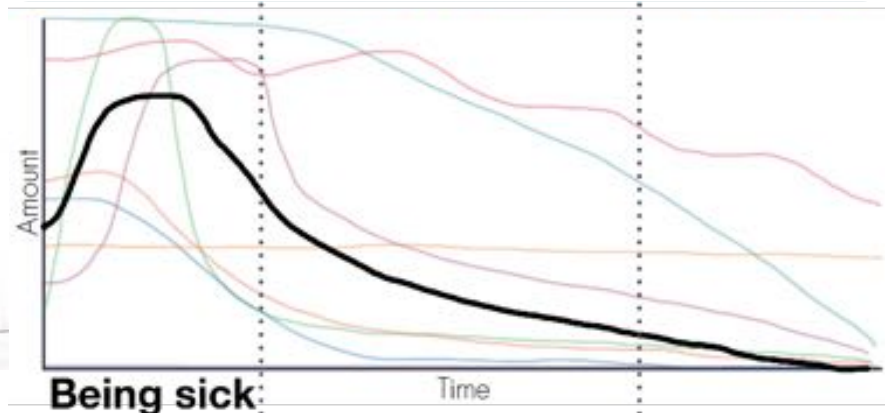


Stress Level

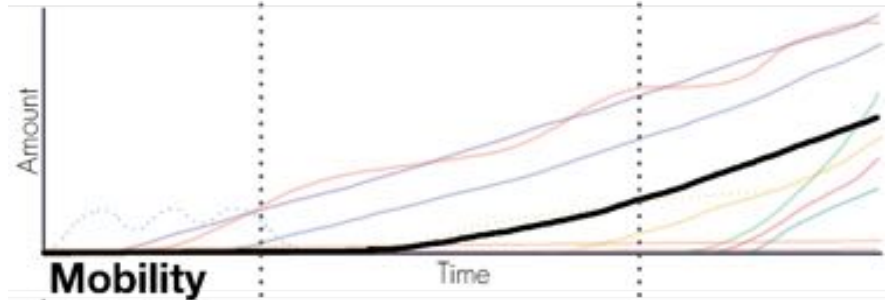




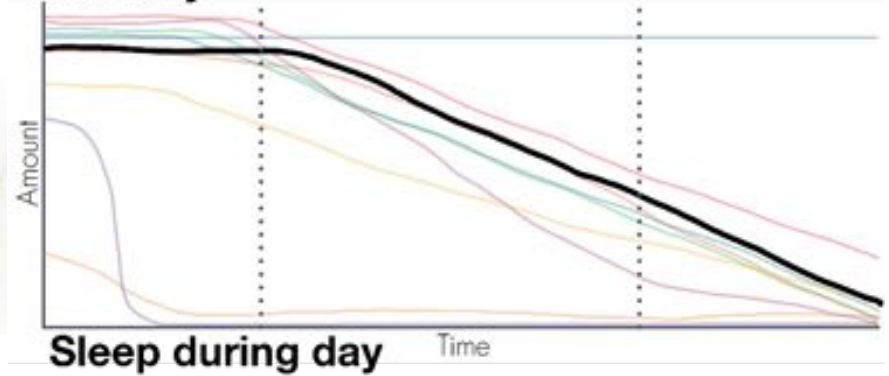
Bad sleep



Serious pain



Stress and fear





Relaxing videos



Follows circadian rhythm



Mobility exercises



VR pain reduction

AI to improve advice

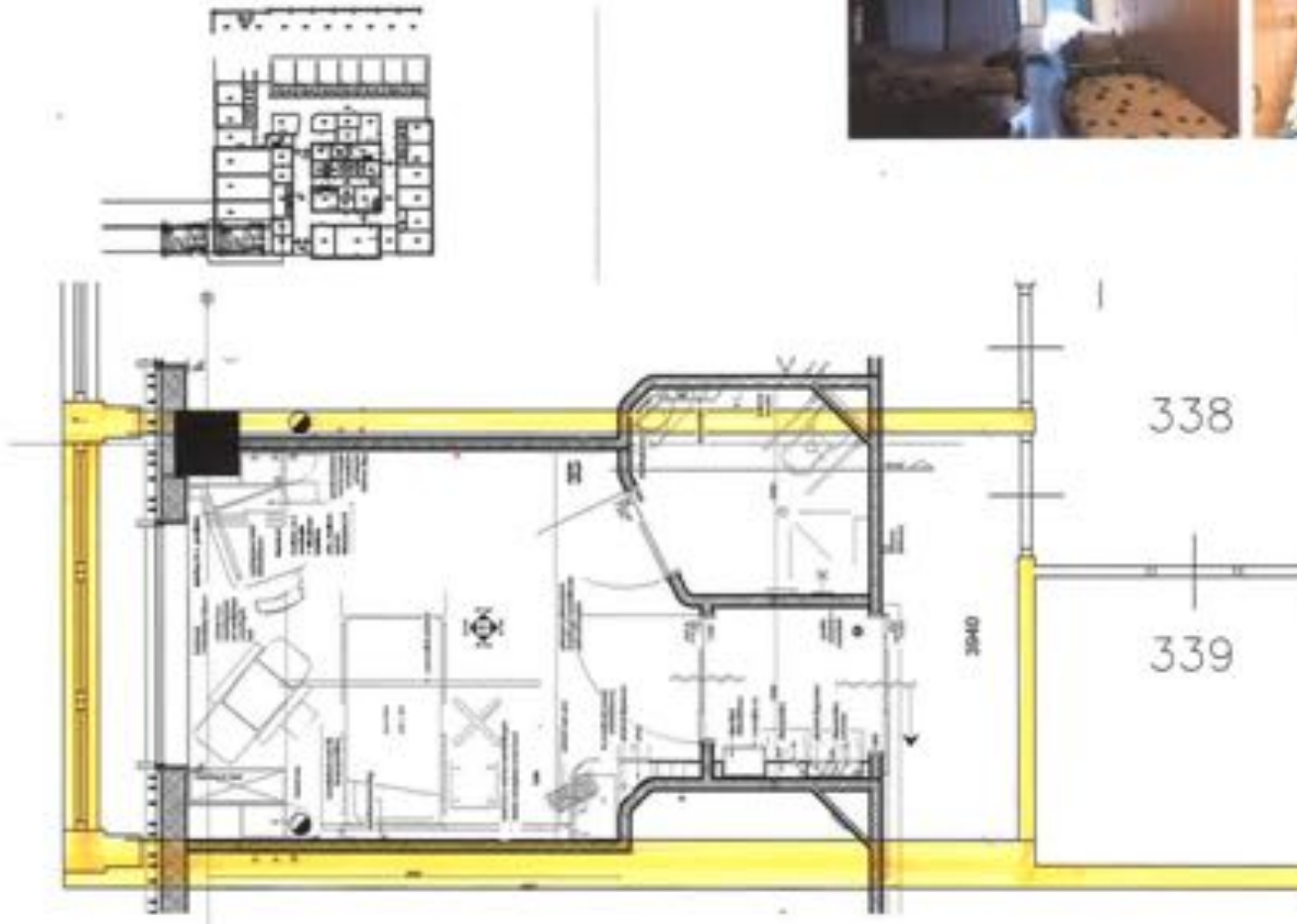


Living Lab at the general ward

Room with a View



5



1

When a motion is detected, the sensor sends the feed to the processing hub.

Integration with

1. Voice/form/movement recognition
2. Nurse messenger system
3. Track & trace personnel
4. Smart building technology

2

Processor first checks if the room has a high-fall-risk patient. If so, then it proceeds with activity detection.



3

If potential fall risk is detected, the hub can be configured to activate in-room lighting, screen, as well as send alert to staff devices.



Integration with

1. Continuous monitoring
2. Predictive analytics
3. Video consulting





Emotional intelligent chatbot



THANK YOU



Google Glass 2013
Black Box OR 2015
Room with a view 2016
VIGOLIFOLI 2017
Heasyway-Heasygoing
R4Heal 2018

Harry van Goor

Professor of Surgical Education

Interim Chair Department of Primary and Community Care

Radboud University Medical Center

Nijmegen The Netherlands

harry.vangoor@radboudumc.nl

[@gooreducatie](#)

René Bleeker

Chief Real Estate
Officer



European Healthcare
Design Award



International Academy
Award

