

Designing Healthy Multi-generational Environments

Ryder



Urban Demographics

2030



500 cities
population > 1,000,000



60% population
under 16 years of age

2050



70% world population
living in cities



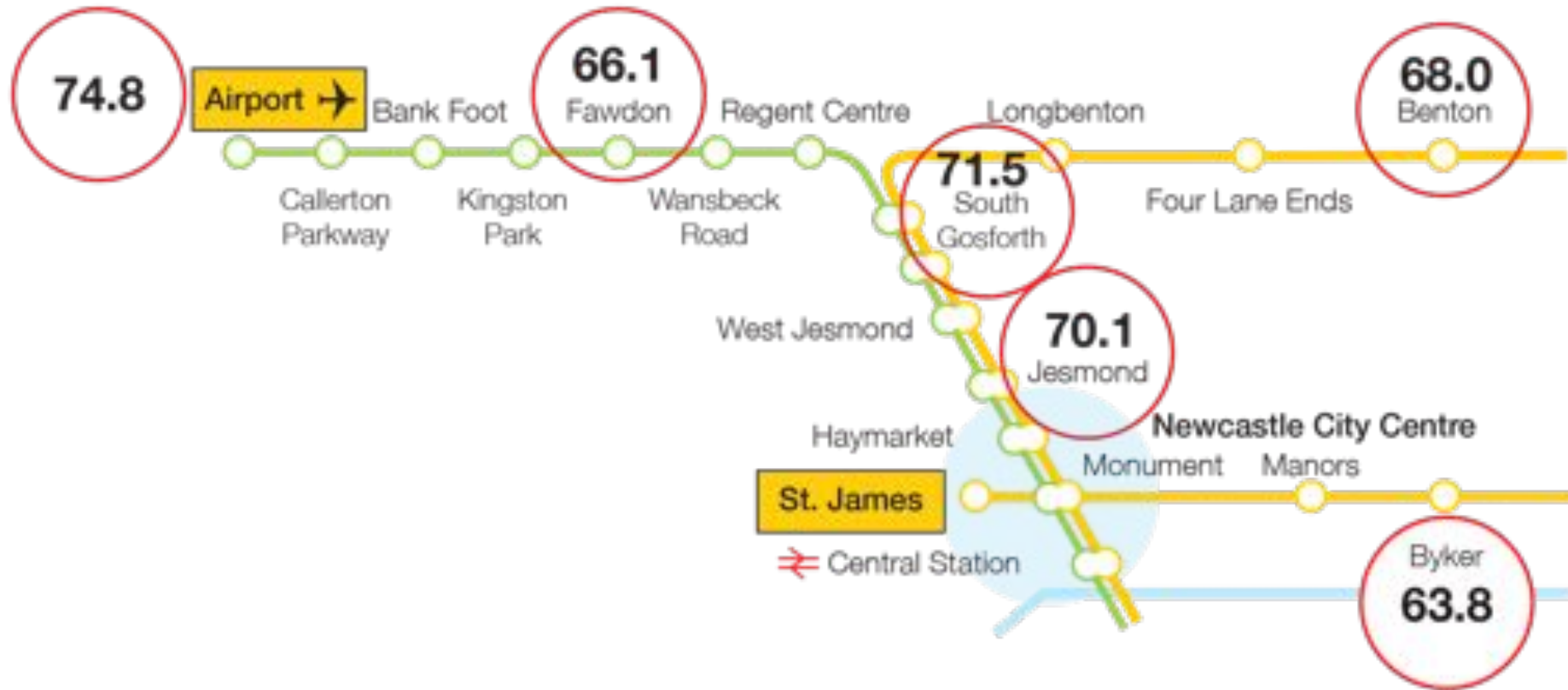
22% population
over 65 years of age

15,000 retirees
every day

Closing the Gap

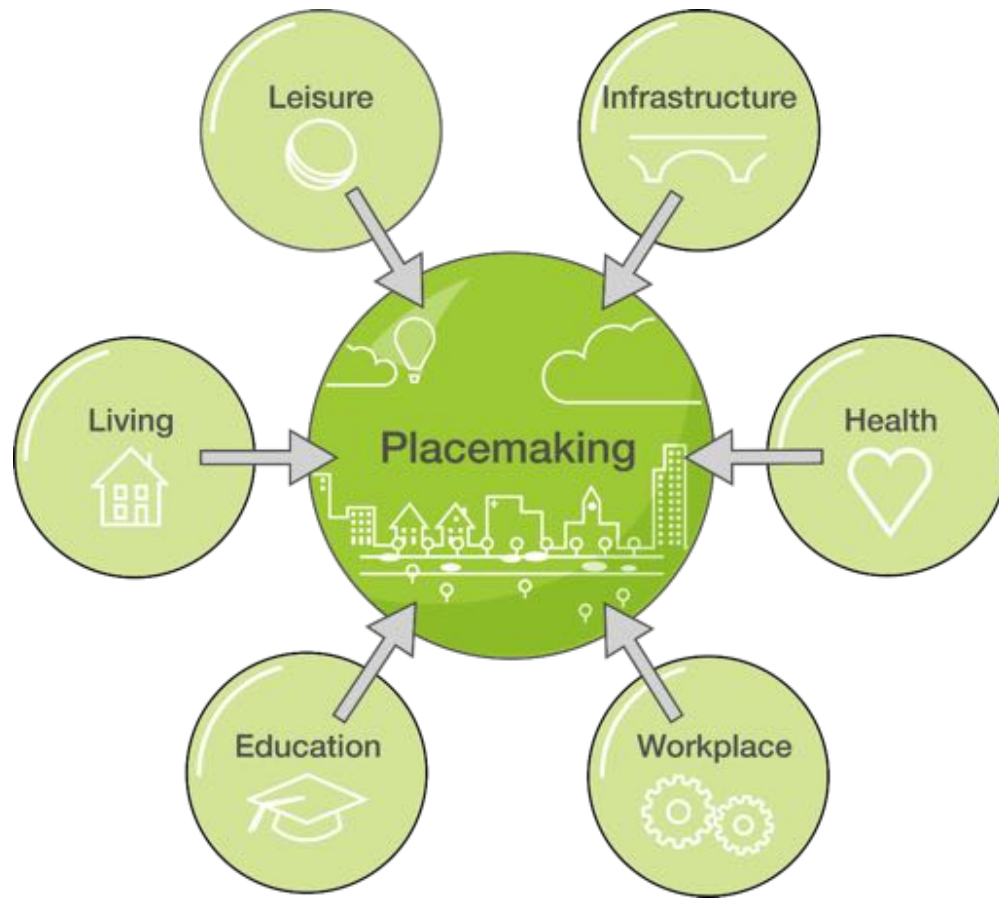
Healthy Living Disparity

Ponteland South



Newcastle University

Placemaking / Ageing Well



Aging 2.0 Grand Challenges

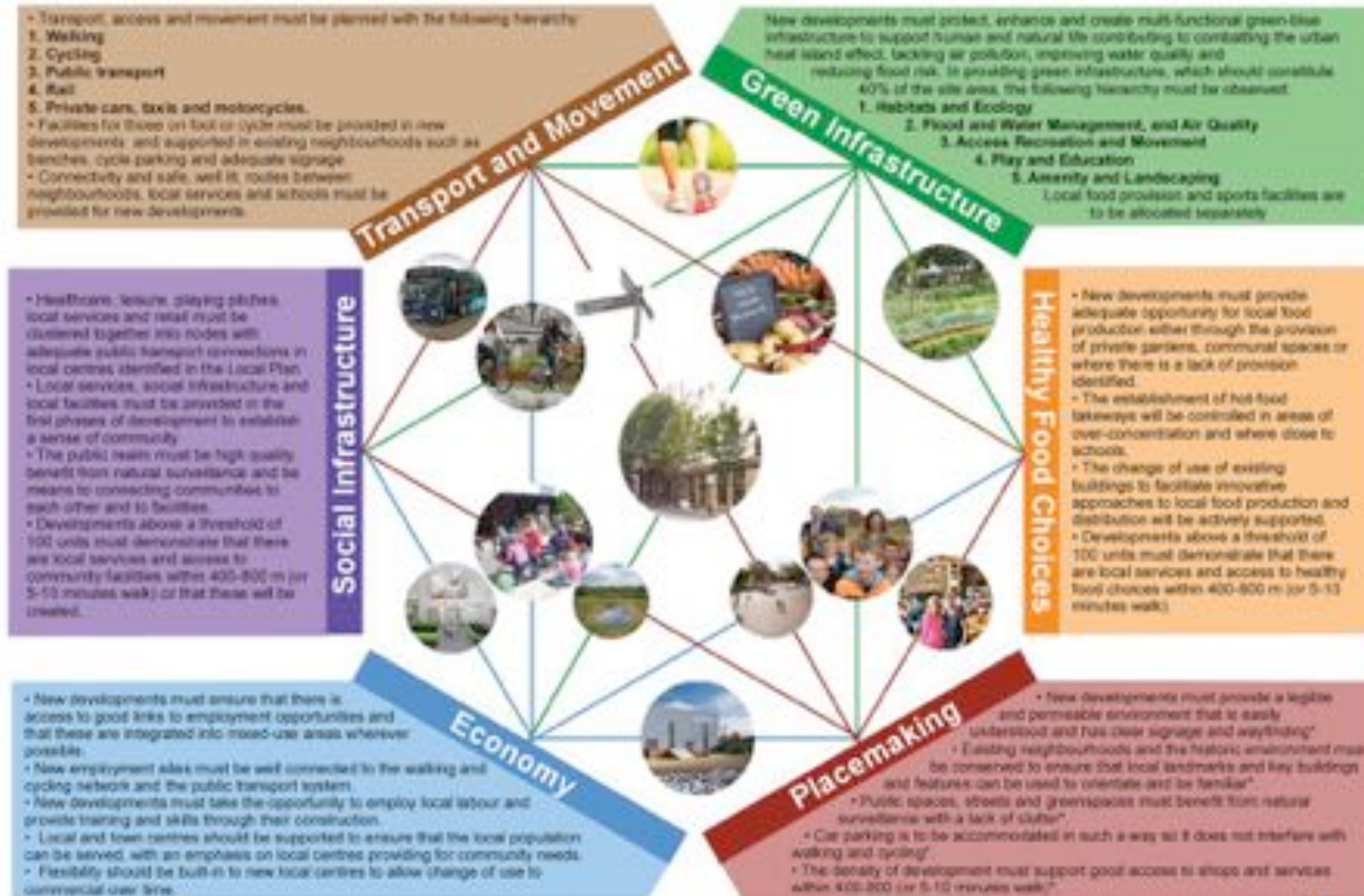


Centre for Ageing Better
Transforming Later Lives - Strategy 2018



NHS Healthy New Towns

Darlington Healthy New Town



* Denotes measures that support a Dementia Friendly Environment



Ryder

Newcastle
helix



karbon
homes

SCI

SUSTAINABLE
COMMUNITIES
INITIATIVE

www.sci.org.uk



ZERO
CARBON
FUTURES

Newcastle
City Council 



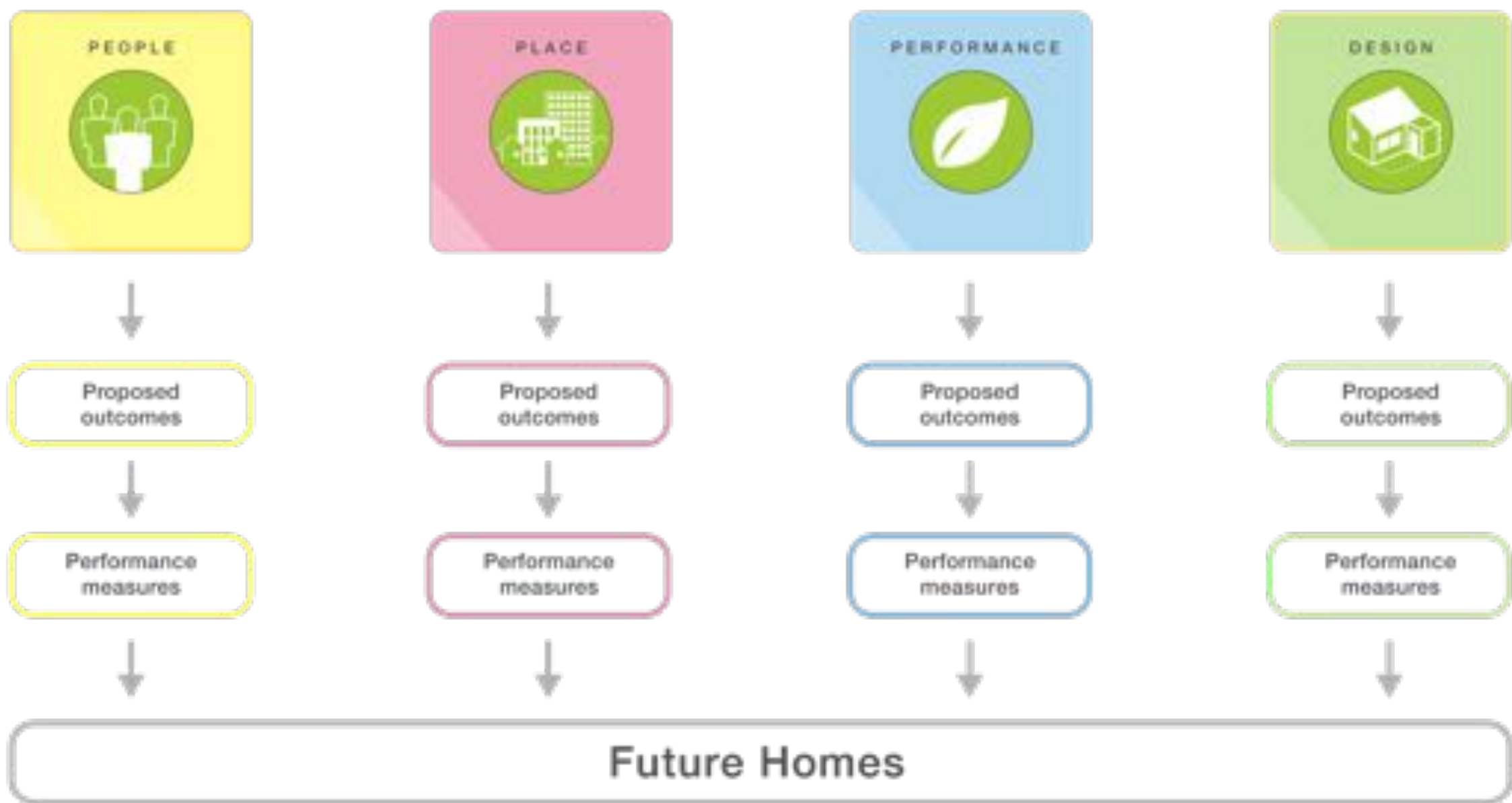
NEWCASTLE
CITY FUTURES



Future Homes



	TIME	Value
1	100%	100%
2	100%	100%
3	100%	100%
4	100%	100%
5	100%	100%
6	100%	100%
7	100%	100%
8	100%	100%
9	100%	100%
10	100%	100%
11	100%	100%





Affordable to rent or buy.



Intergenerational friendly.



Sense of community.



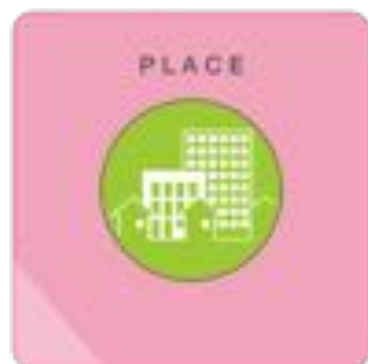
Promote a low carbon lifestyle.



Improved mental, physical and social wellbeing.



Opportunities to engage.



Access to employment opportunities.



Easy access to public transport networks.



Improved sense of safety.



On site food production.



Reduced impact on health services and social care.



Replicable housing model



Reduced use of mains electricity.



Reduced use of mains water.



Reduced surface water runoff.



Improved local air quality.



Increased site biodiversity.



Consistent thermal comfort.



Long term adaptable homes.



Short term flexible layouts



Good natural lighting



Improved build quality



Sufficiently spacious homes



Access to private and communal green space.

Adaptable



1

Intergenerational
Living



2

Community Feel



3

Adaptable
Technologies



4

Low Energy Use



5

Private
Greenspace



6

Communal
Greenspace



7

Replicable Model

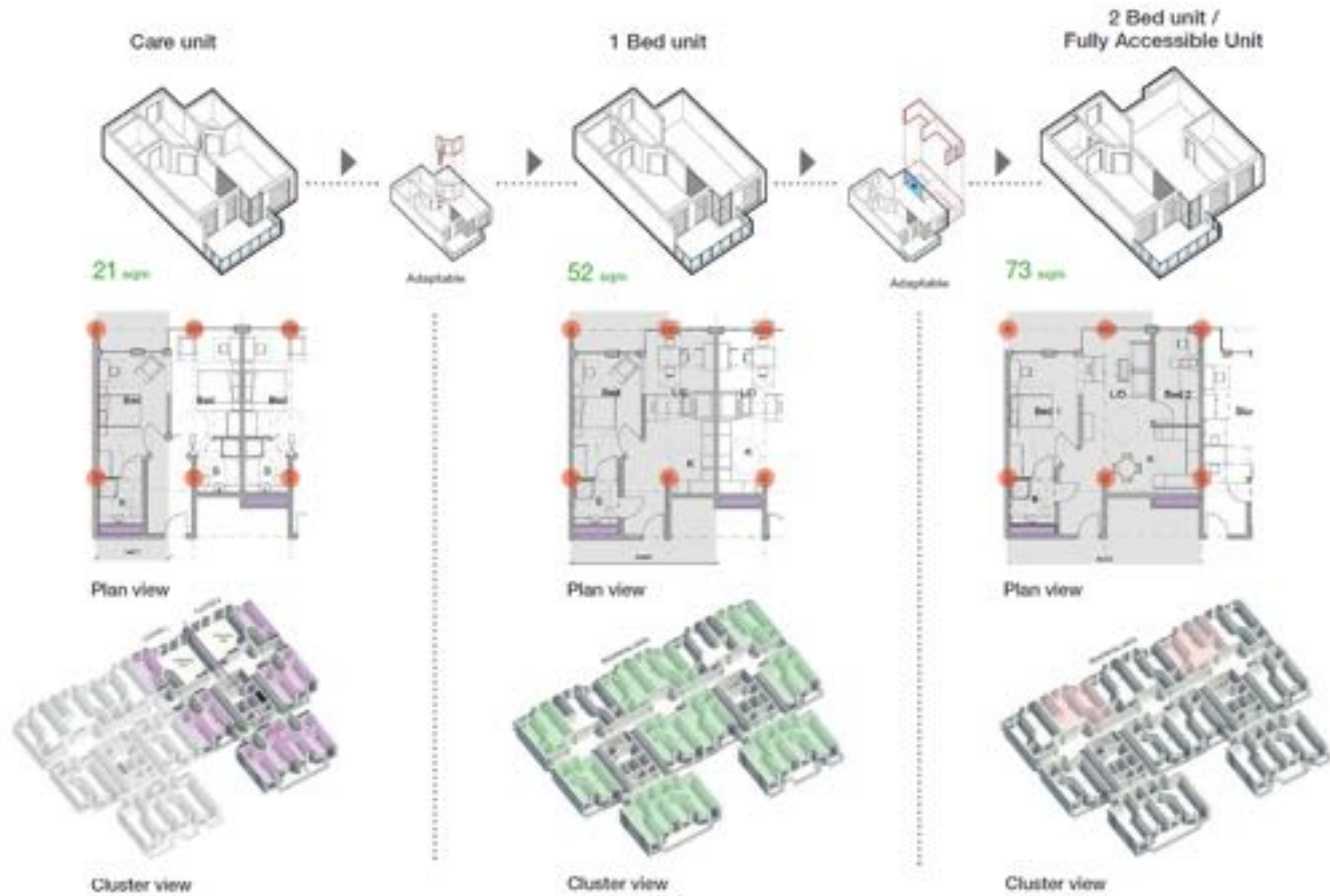


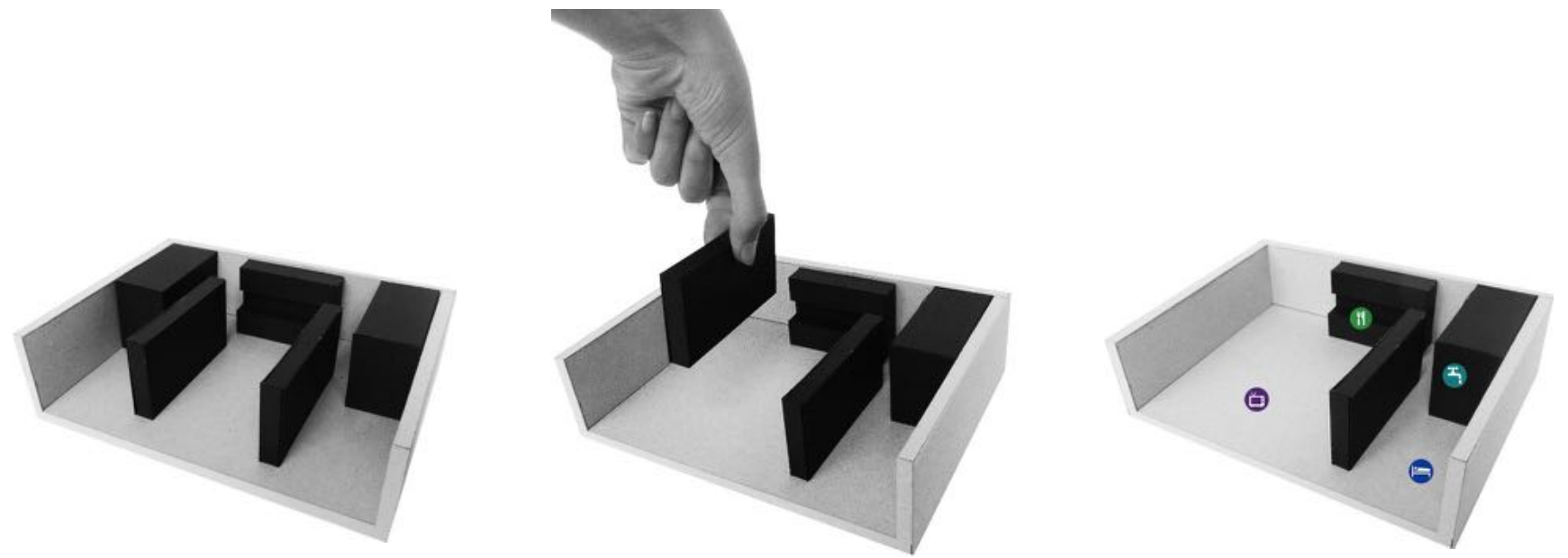
8

Campus for Ageing and Vitality



Central and Cecil





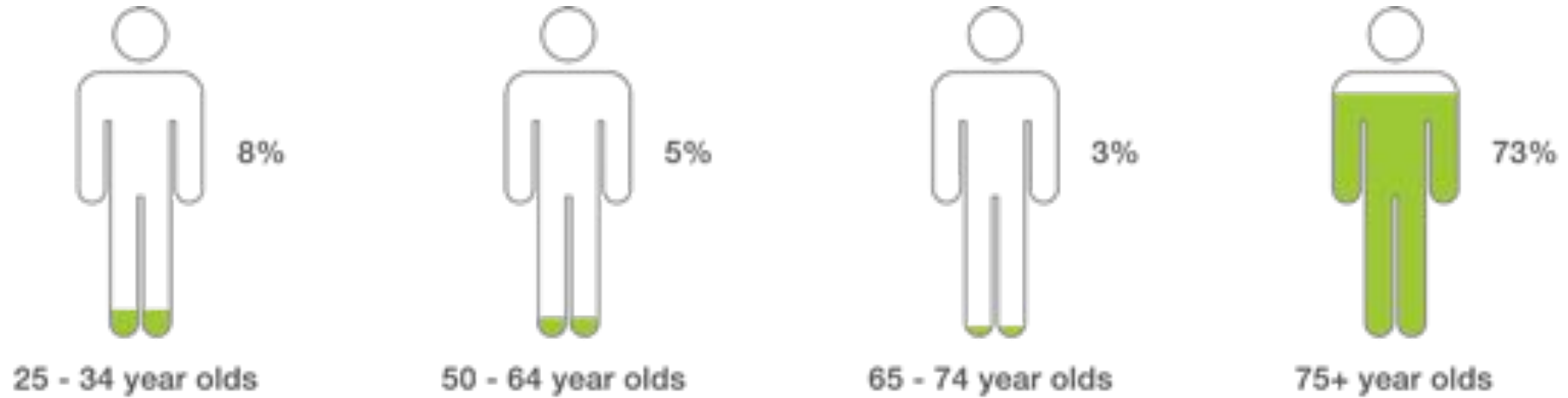


Defined independent living areas within shared apartments

Bedrooms allow resident flexibility to add furniture

Built in storage

Jo Cox Commission and The Centre for Ageing Better Self Reported Loneliness by Age Group







Everything architecture

Our goal is simple – to improve the quality of the world around us and, in doing so, improve people’s lives. An approach embedded in the origins of Ryder which remains a touchstone today.

Everything architecture is based on principles of simplicity, usefulness and elegance. It connects people to places, from the room to the city. It defines a responsibility to society and to the future of our planet. It is embedded as much in the pioneering application of science and technology as in art, and is the foundation for the collective journey from the vision through designing, making and beyond into use. Learning from each project for the benefit of the next.

Everything architecture relies on strong leadership to transcend the professional silos. It requires talented people with a passion for collaborative project working to deliver the best return on investment for our clients.