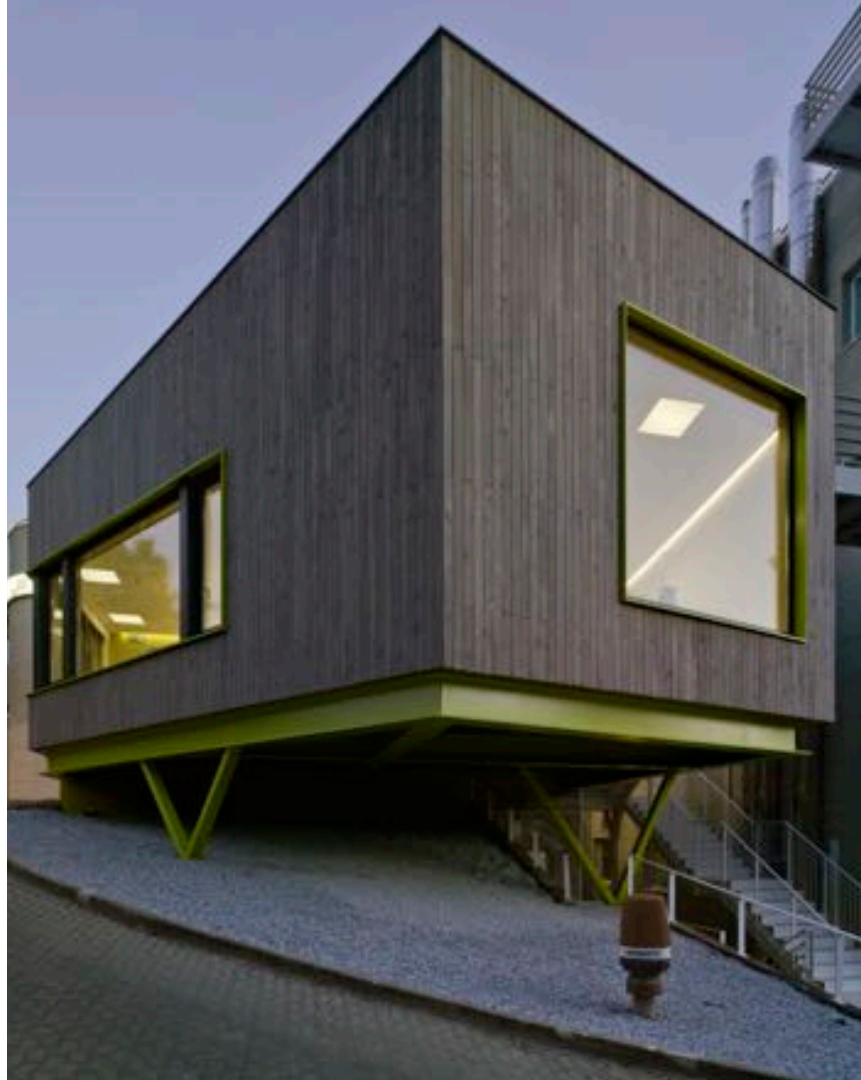


ONCOLOGY DAY CARE CENTER

SANTOS REYES
HOSPITAL.
ARANDA DE DUERO,
BURGOS



Aranda
de
Duero



1.

2009.

When it
all started

8 containers





STARTING
POINT



RESTRICTIONS



OPPORTUNITIES



Small plot- high density

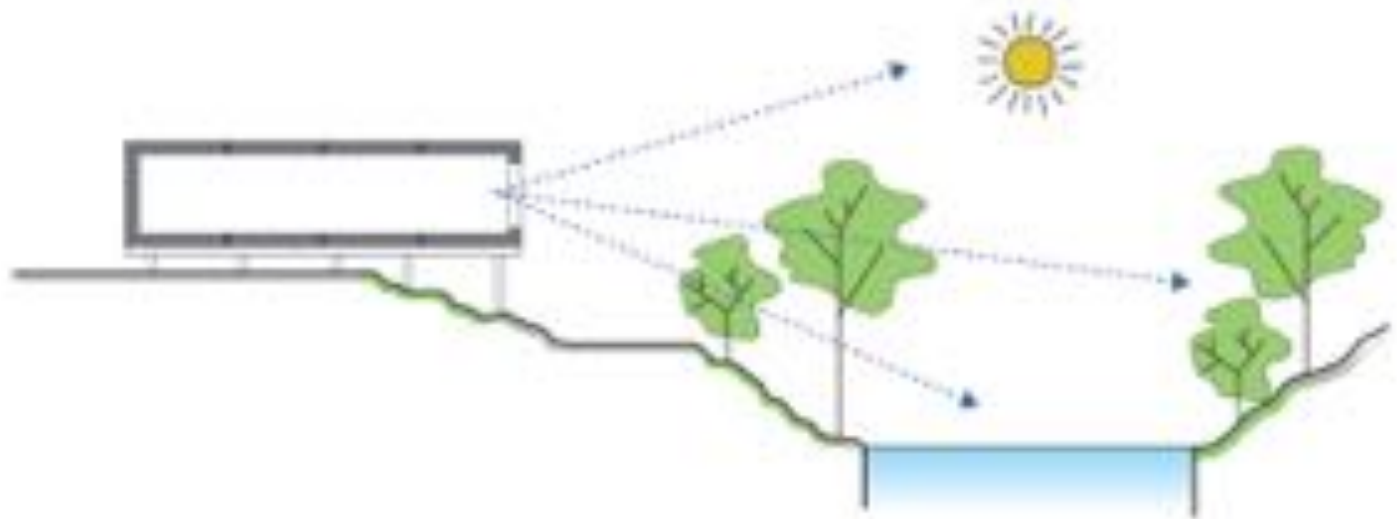
Restrictions

Topography

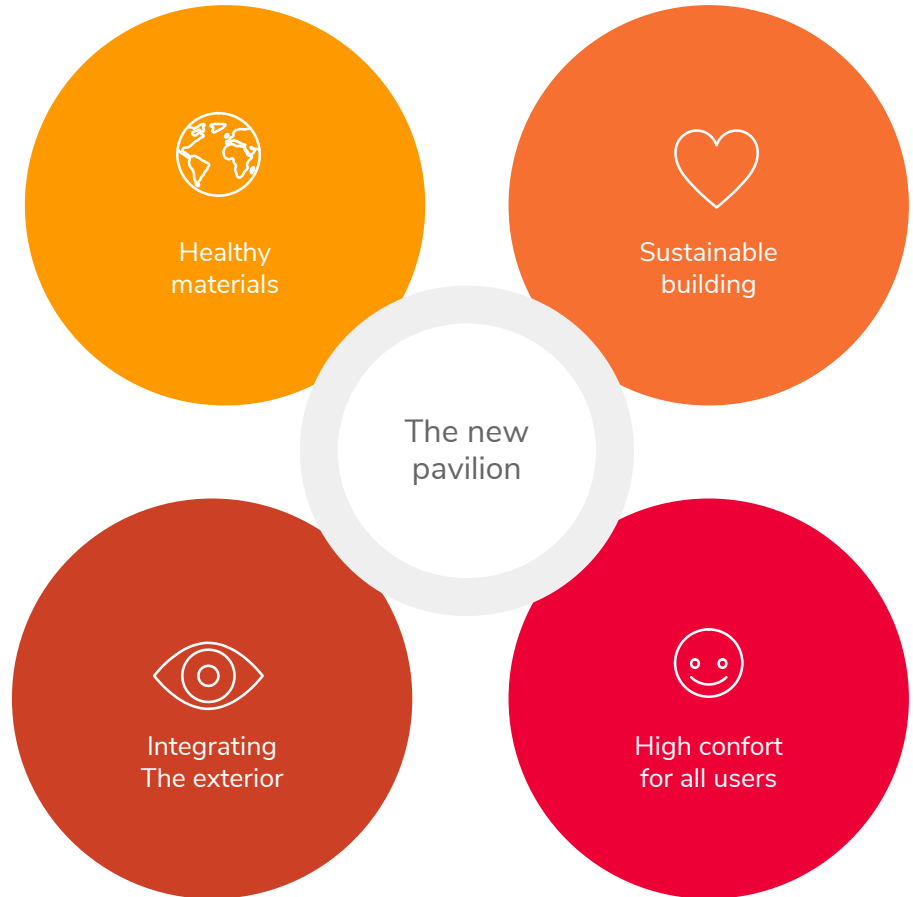
Emergency
staircase

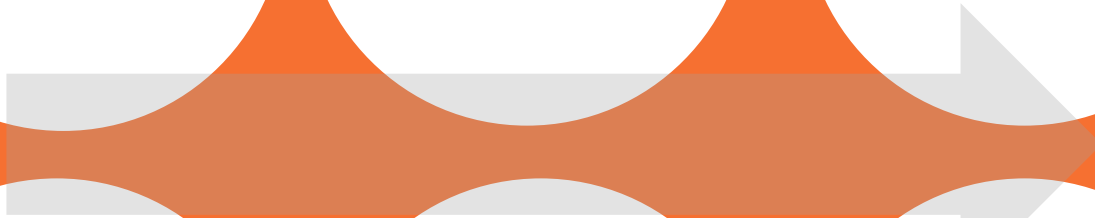
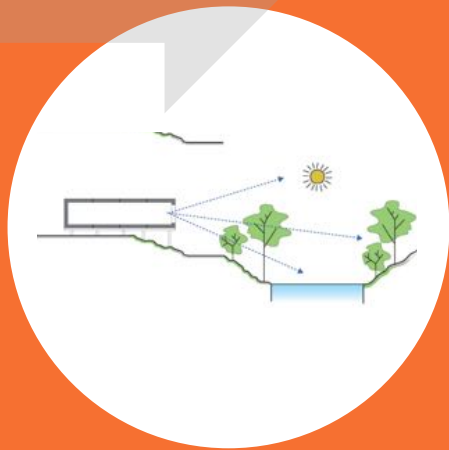
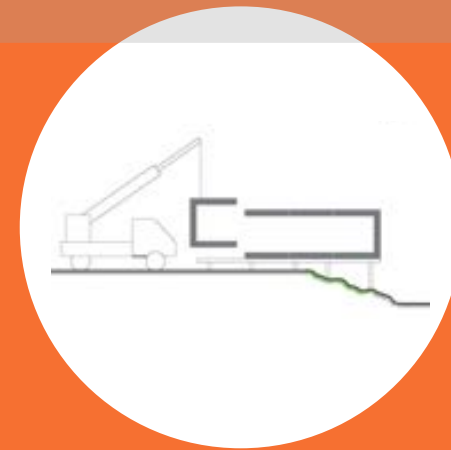






Ideas, concepts





Disassembly



Temporary solution

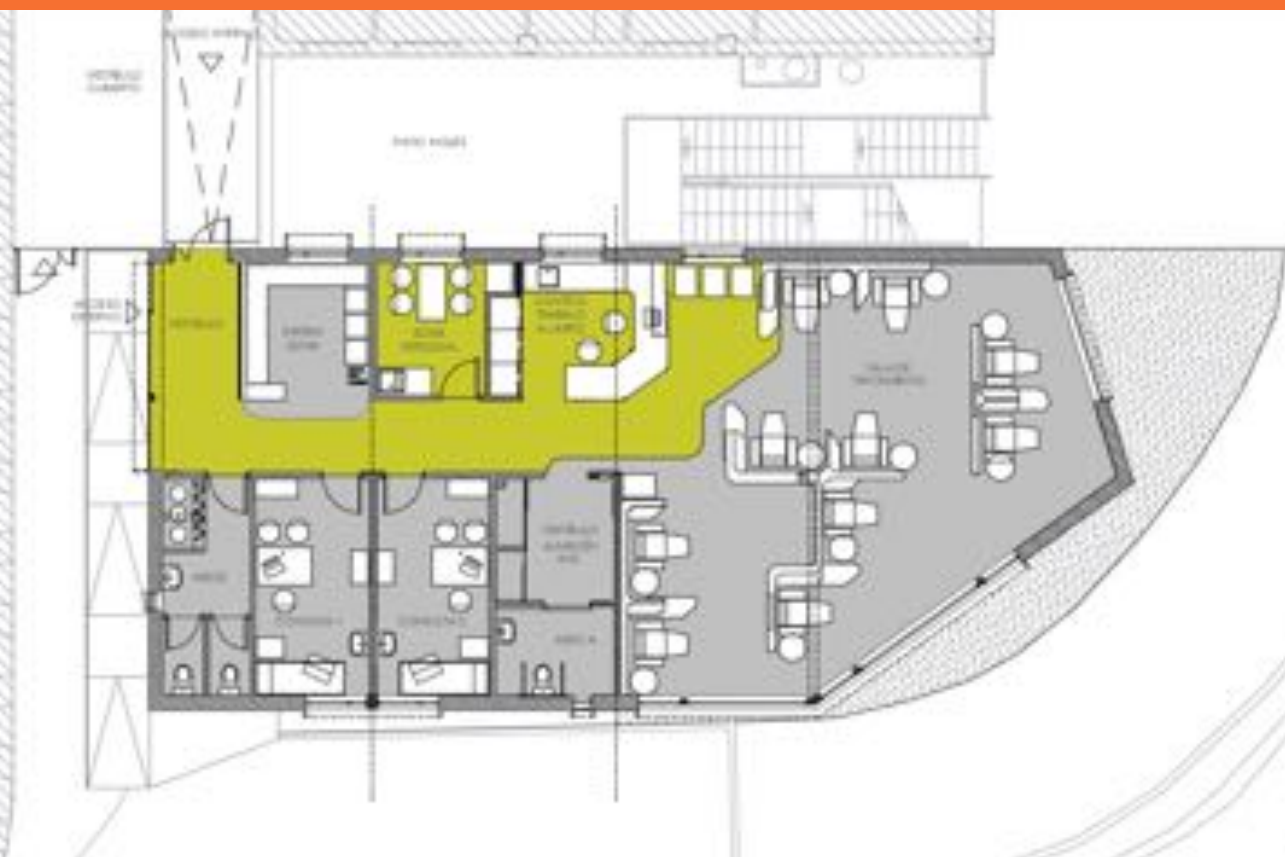




Typical layout



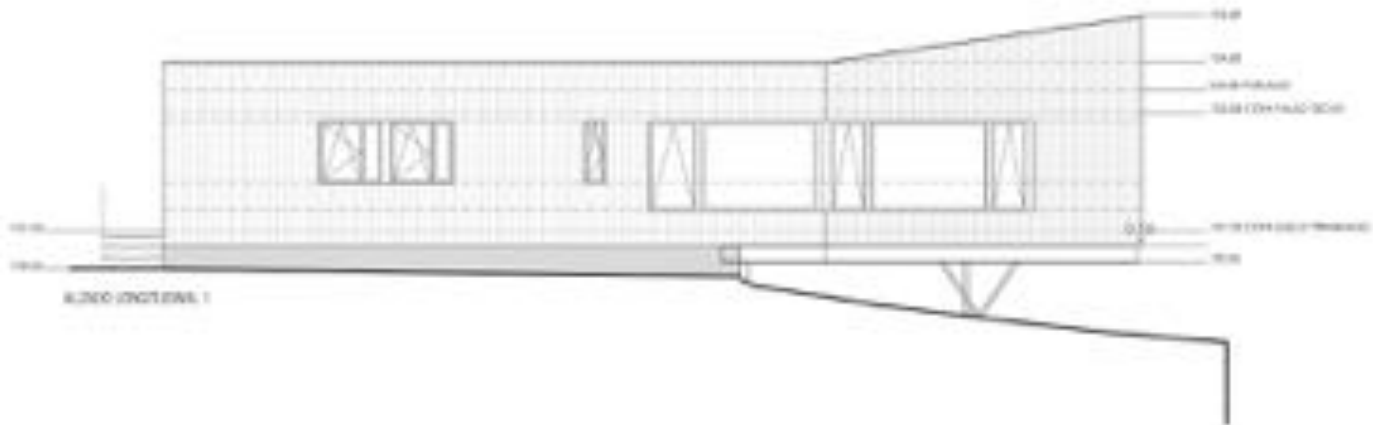








Orientation and daylight



Orientation and daylight



New platform



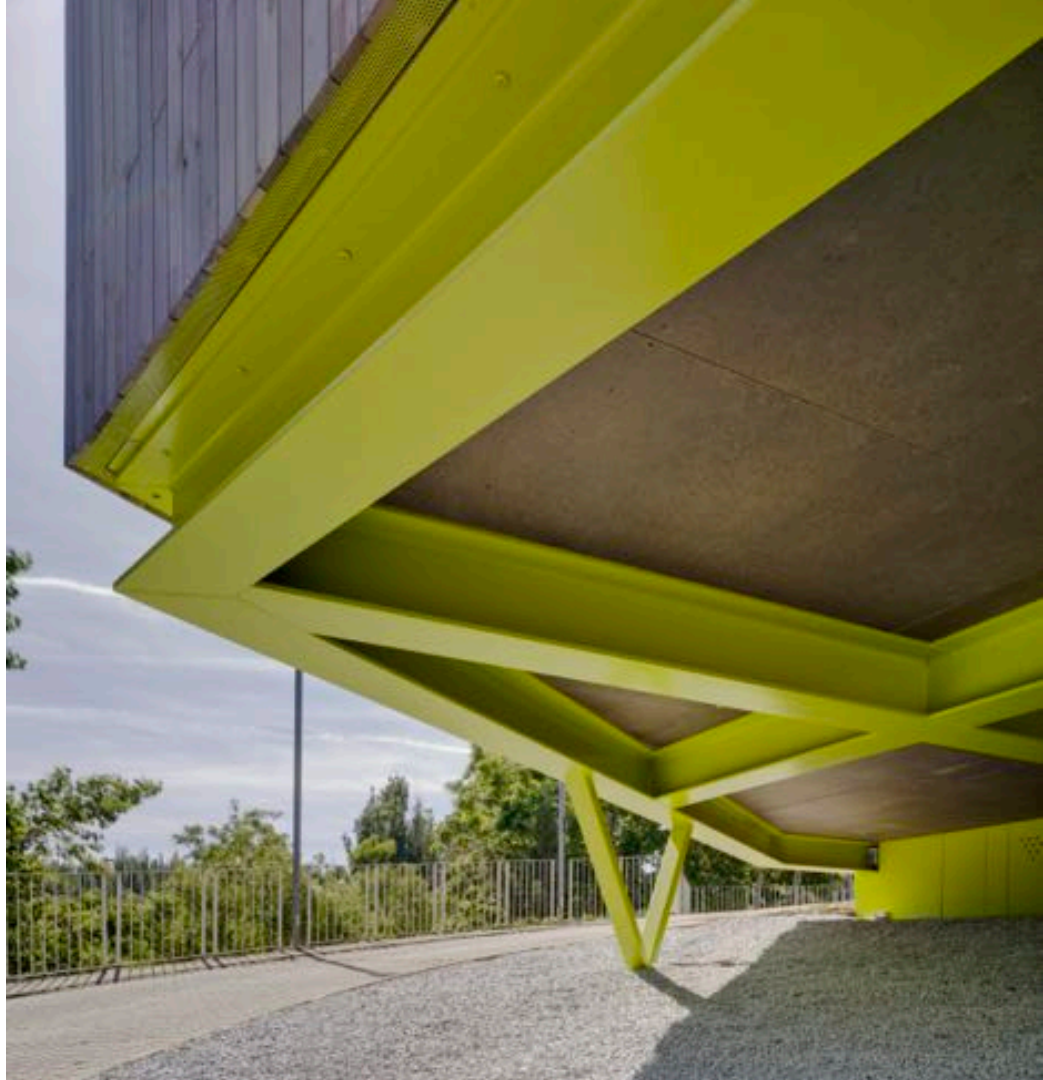
Prefabricated assembly



2.
2018



Light construction





A healthy, sustainable and
comfortable building.



Partners,
friends &
families



Caring for the staff







Privacy & Dignity



Challenge n°1

Layout Design

Patients' needs

„...Norman Foster instead asked for a chair and a table to stay on doing what he most liked during his cycles of chemotherapy: drawing and writing”



Talking & writing, Norman Foster



Spacial layout: designing for a very reduced space, but adjustable to patient needs.

Challenge n° 2



Patient needs
vs. staff
resistance

Spacial layout



„Cancer, from my personal point of view.
El País, november 2017

Challenge nº 3

Materials
Textures
Colors
Smell

„Each time I am entering a hospital in Spain, no matter which one, everything seems familiar. The more time I spend in the building, the more I recognize it, as if I would have been there before...”

I.O., MD- Psychiatrist,
Madrid



1. Designing layouts for a very reduced space



2. Patients' needs vs. staff resistance

3. Materials - associations

4. Integrating an exterior space?



Reality



The patients

It was so crowded in this tiny space, we were in bad conditions.

Before there was no comfort at all.
Cold in winter and hot in summer.

Before it felt oppressive, small and quite depressing.

The new pavilion is so much more comfortable and spacious. From my point of view I am very happy about the change.

The treatment area now has enough light for those of us who like to read. And great views if you just want to lay back and relax.

When I look out to the river, and I observe the ducks in the sun...this all cheers me up. It is almost beautiful here...

The partners

A temporary space, it seemed a temporary situation for years.

A sensation of light and peace. A generous space...amplitud and a place for everybody.

The professional

I was really uncomfortable entering in the mornings. And complicated to work in a normal way.

I can now do my job as I have always wanted to.

amueller@arquitecturadematernidades.es
www.arquitecturadematernidades.es
www.viraiarquitectos.com

ROYAL COLLEGE OF PHYSICIANS LONDON | 11-13 JUNE 2018
EUROPEAN
HEALTHCARE DESIGN
RESEARCH • POLICY • PRACTICE

¡Gracias!
Thank you!