

# Bristol Royal Infirmary. The Performance Gap.

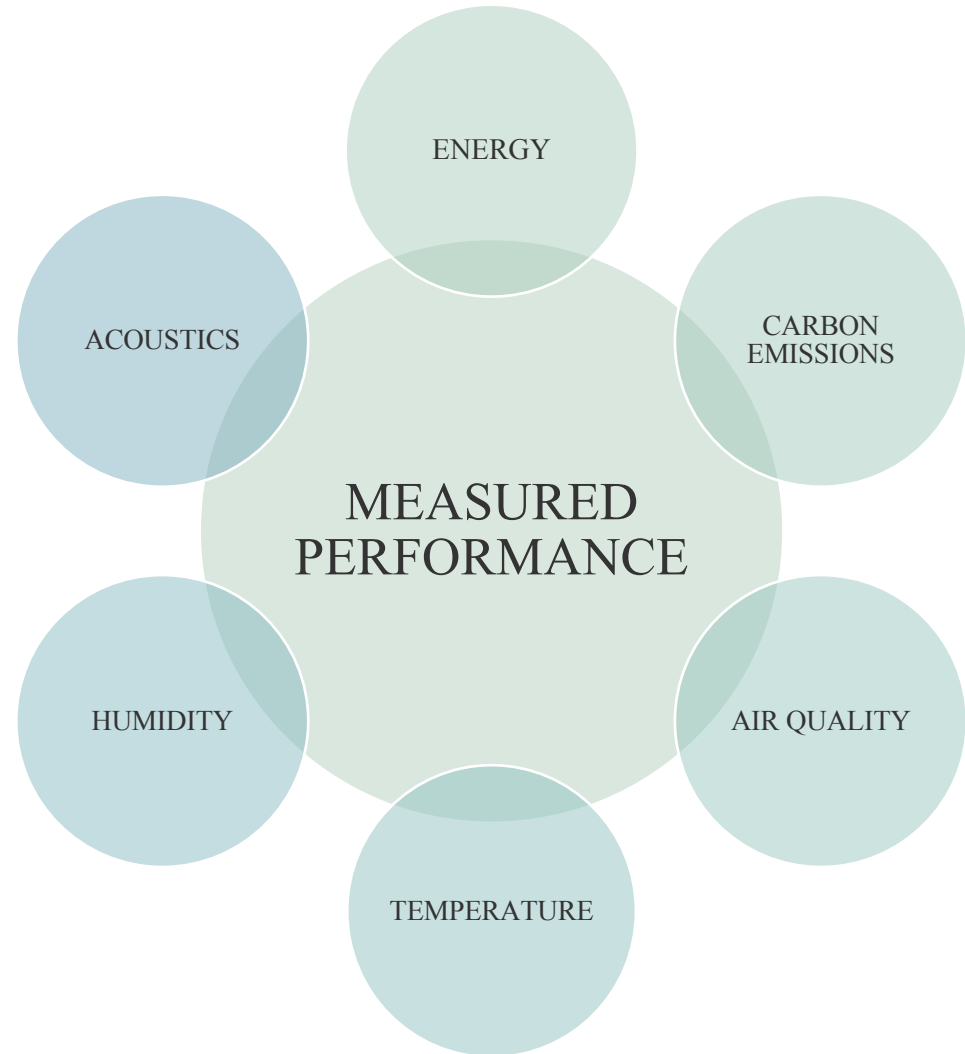
EUROPEAN HEALTHCARE  
CONFERENCE 2018

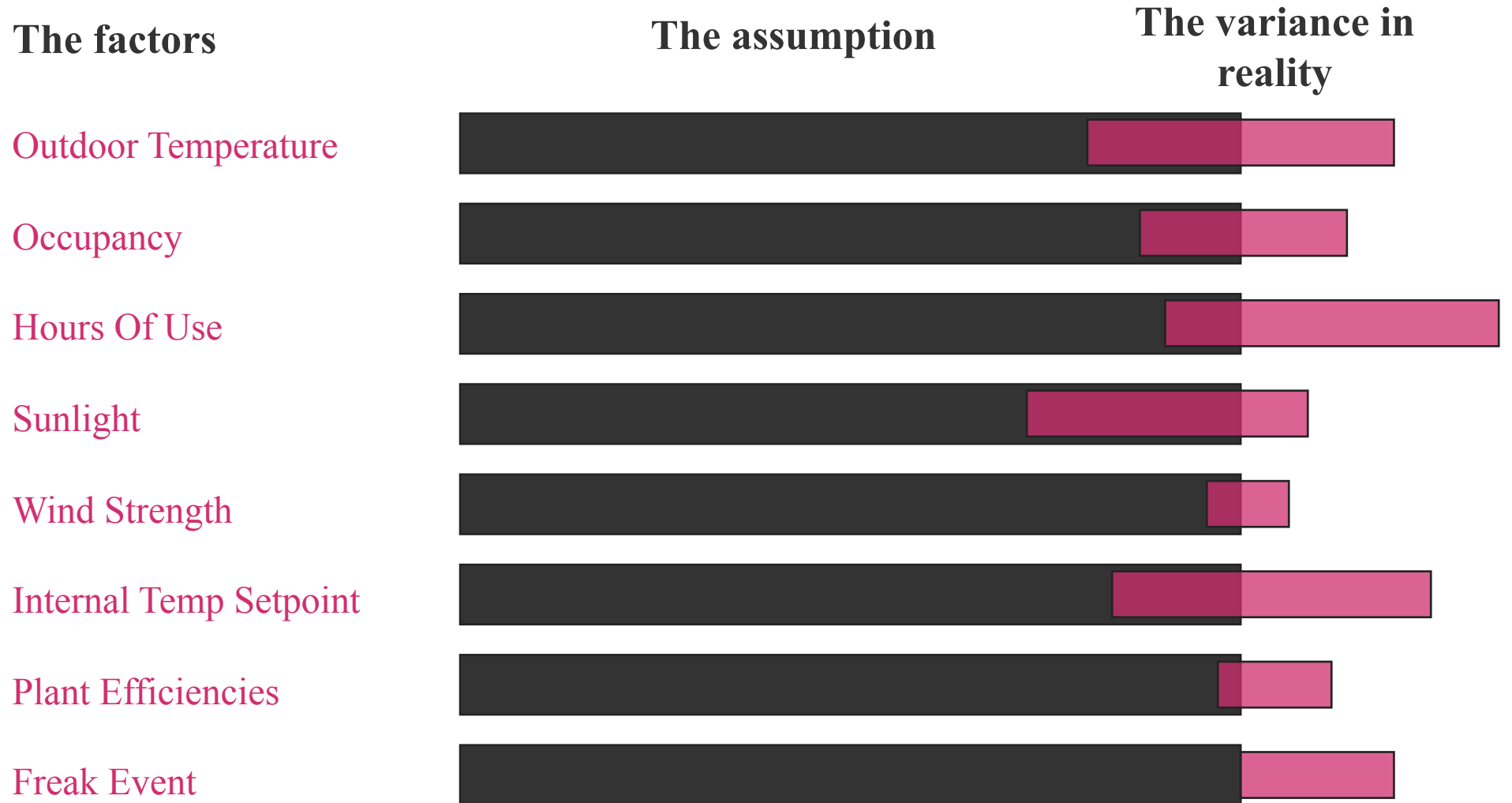


# The Performance & The Gap



# What measurements do we typically consider to create a performance “value”

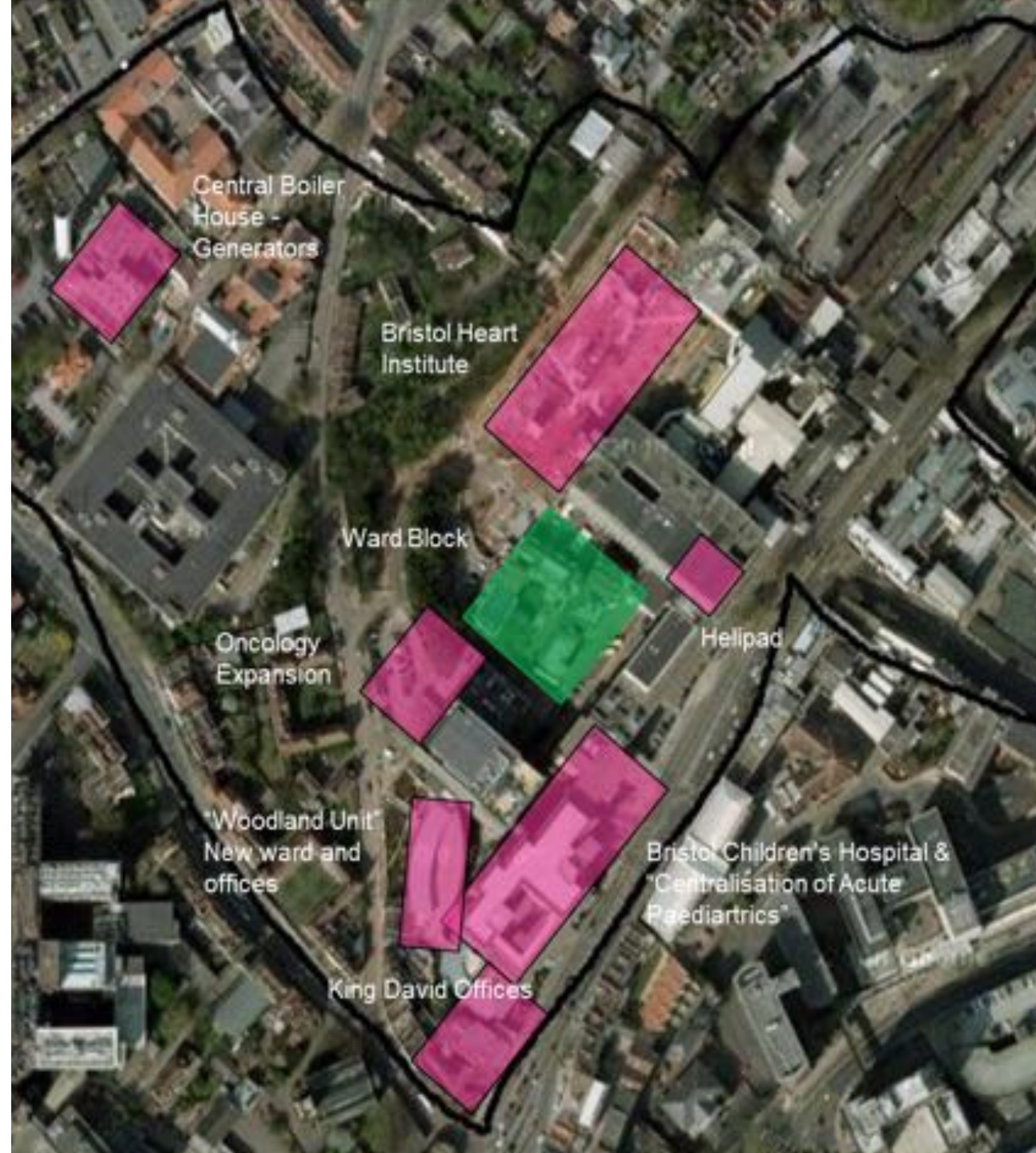
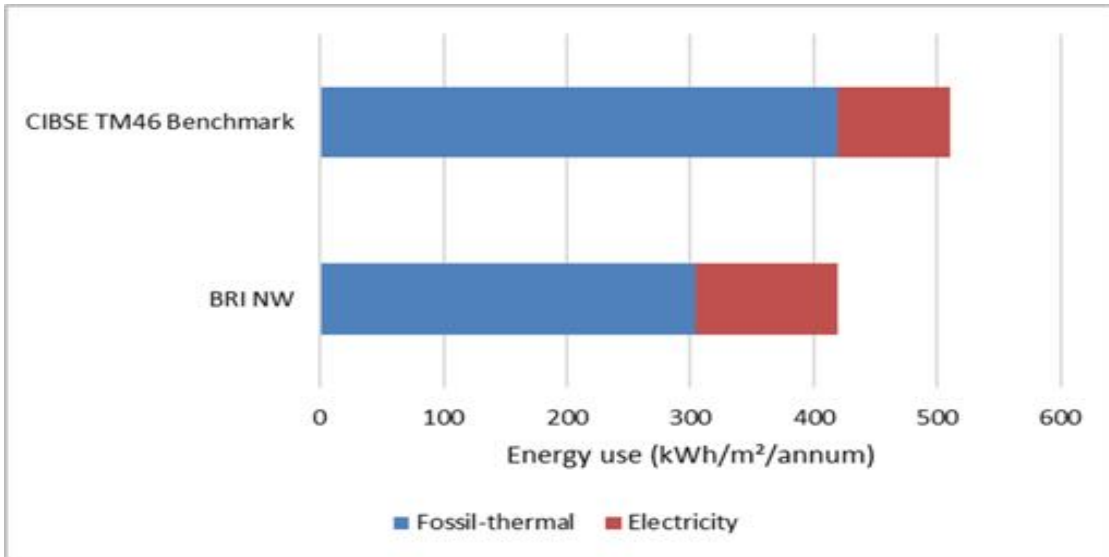








# Bristol Royal Infirmary







AIR POLLUTION

Health

## UK's most polluted towns and cities revealed

4 May 2018

     Share



Environment

### Each car in London costs NHS and society £8,000 due to air pollution, report finds

'We know the health impacts of air pollution, and now the economic case for cleaning up the air we breathe has been laid bare'

Josh Gabbatiss Science Correspondent | @josh\_gabbatiss | 2 days ago | 13 comments

 Like Click to follow The Independent Online



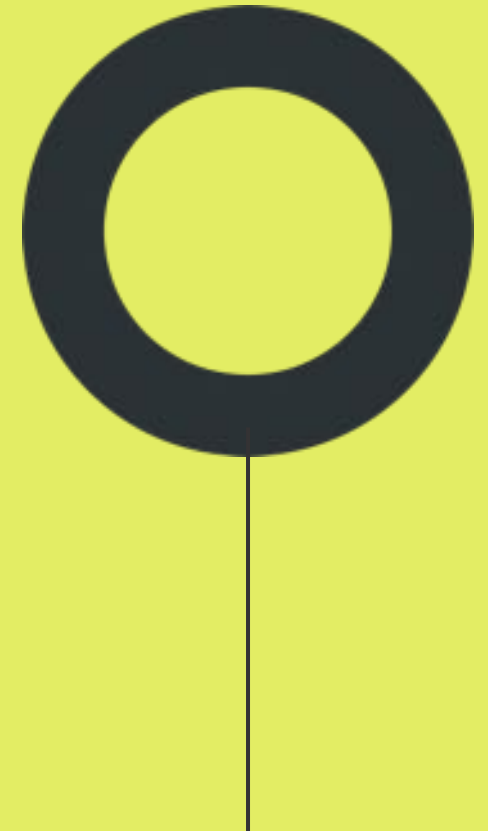


Estimated losses in life expectancy attributable to exposure to fine particulate matter (PM<sub>2.5</sub>) from anthropogenic emissions for 2000 (left) and 2020 (right)

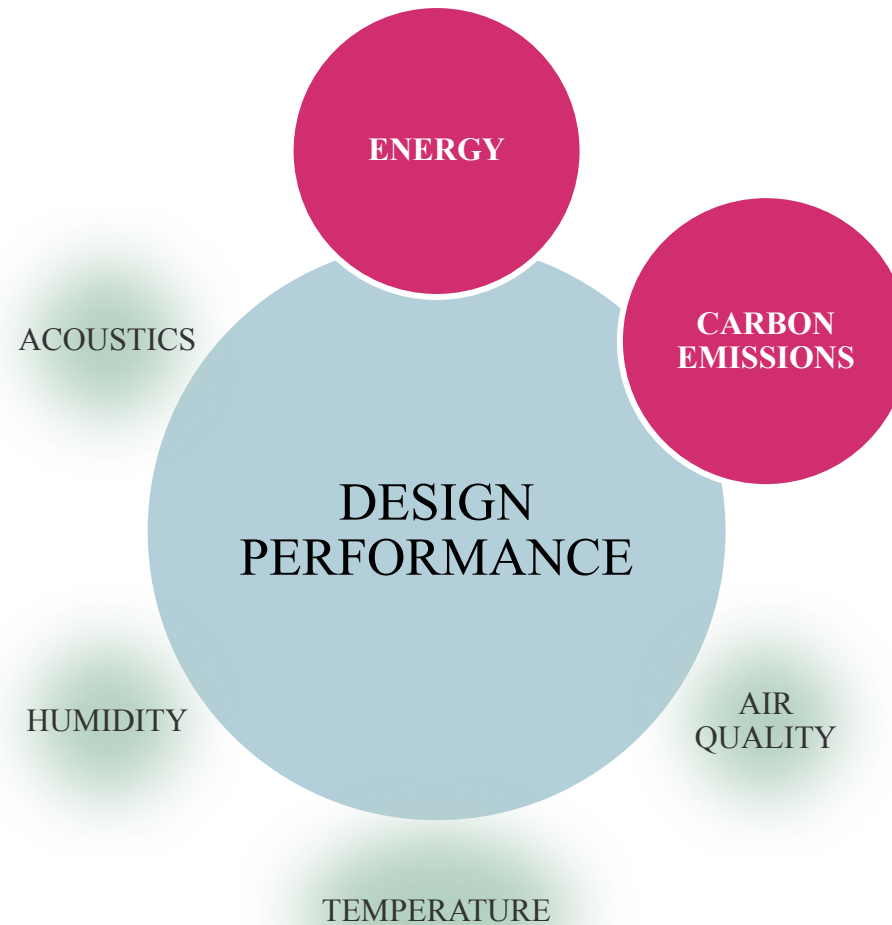




Are we being asked the  
right questions?

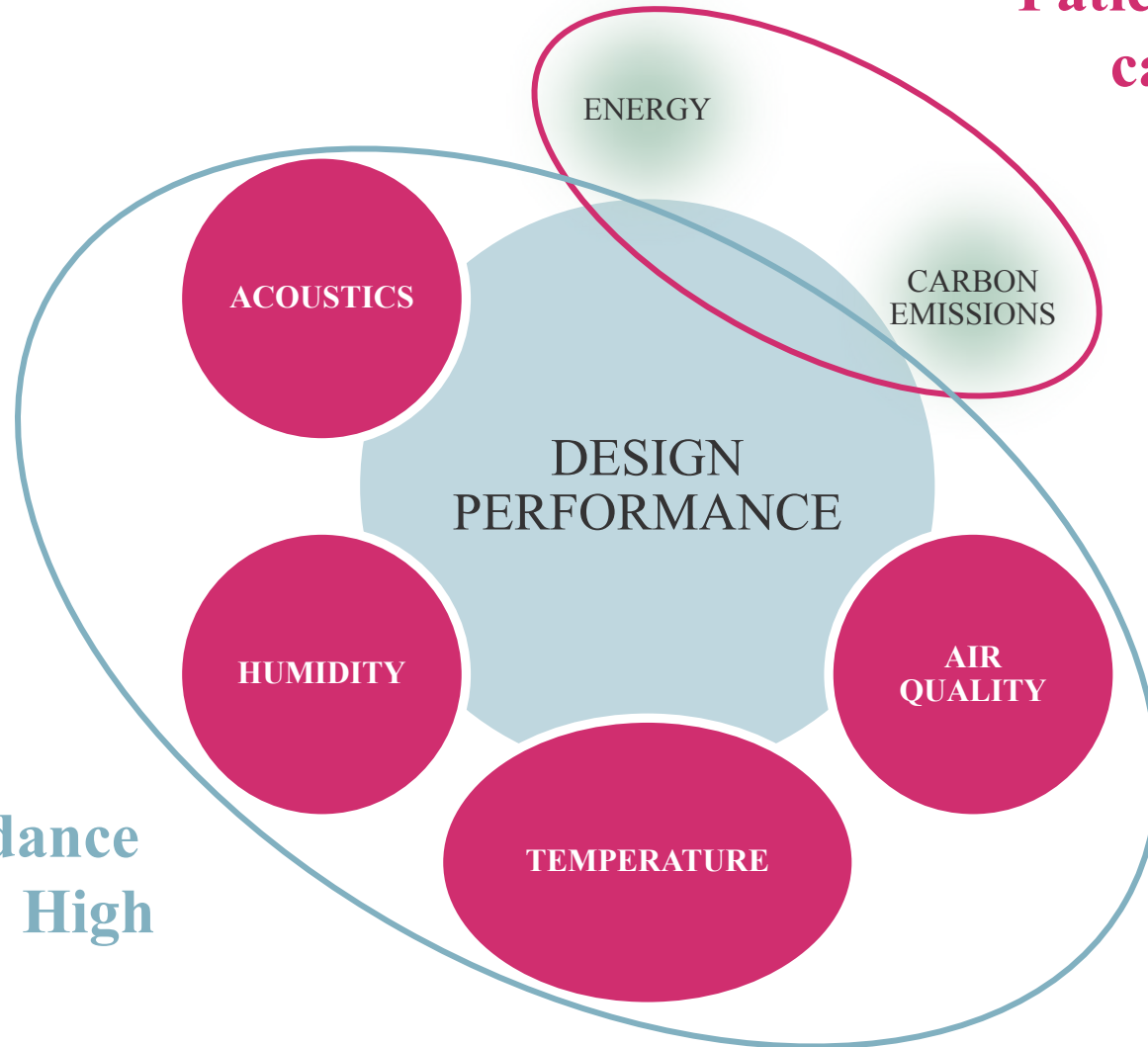


Performance metrics.  
Current Focus.



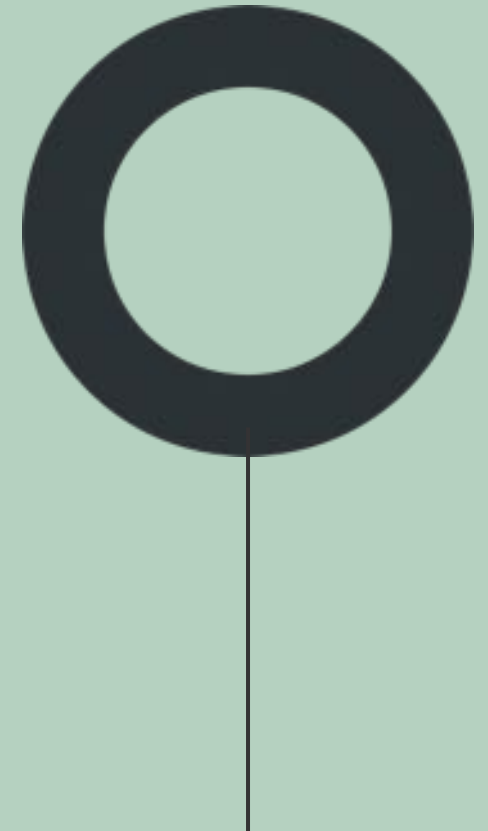
Performance metrics.  
Refocused.

**Patients don't  
care about  
carbon.**



**So is current guidance  
really promoting High  
Performance?**

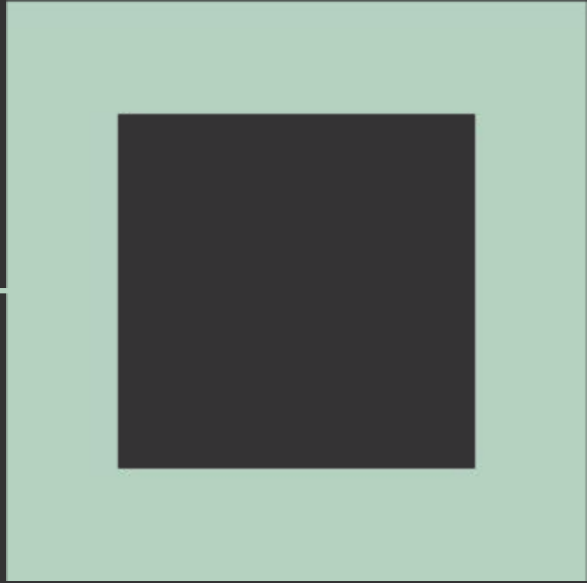
# So is Natural Ventilation still ok?



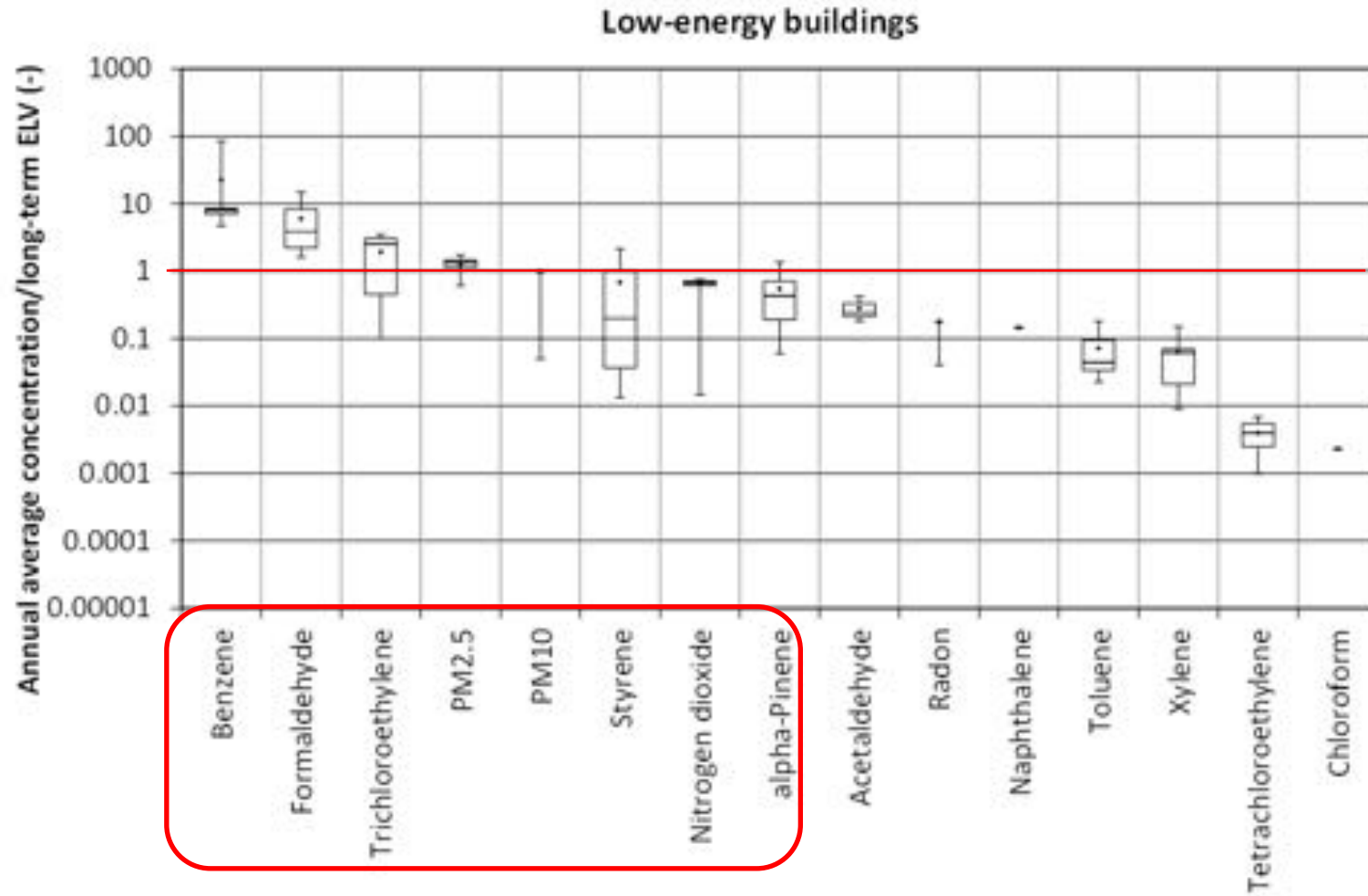




# Utopia or dystopia?



Thank you.  
[hoarelea.com](https://www.hoarelea.com)



Source: Abadie and Wargocki, 2016. IEA EBC Annex 68 – Indoor Air Quality Design and Control in Low-energy Residential Buildings, Subtask 1, Defining the metrics.