



ROBARTS
SPACES

Architecture · Interiors · Engineering

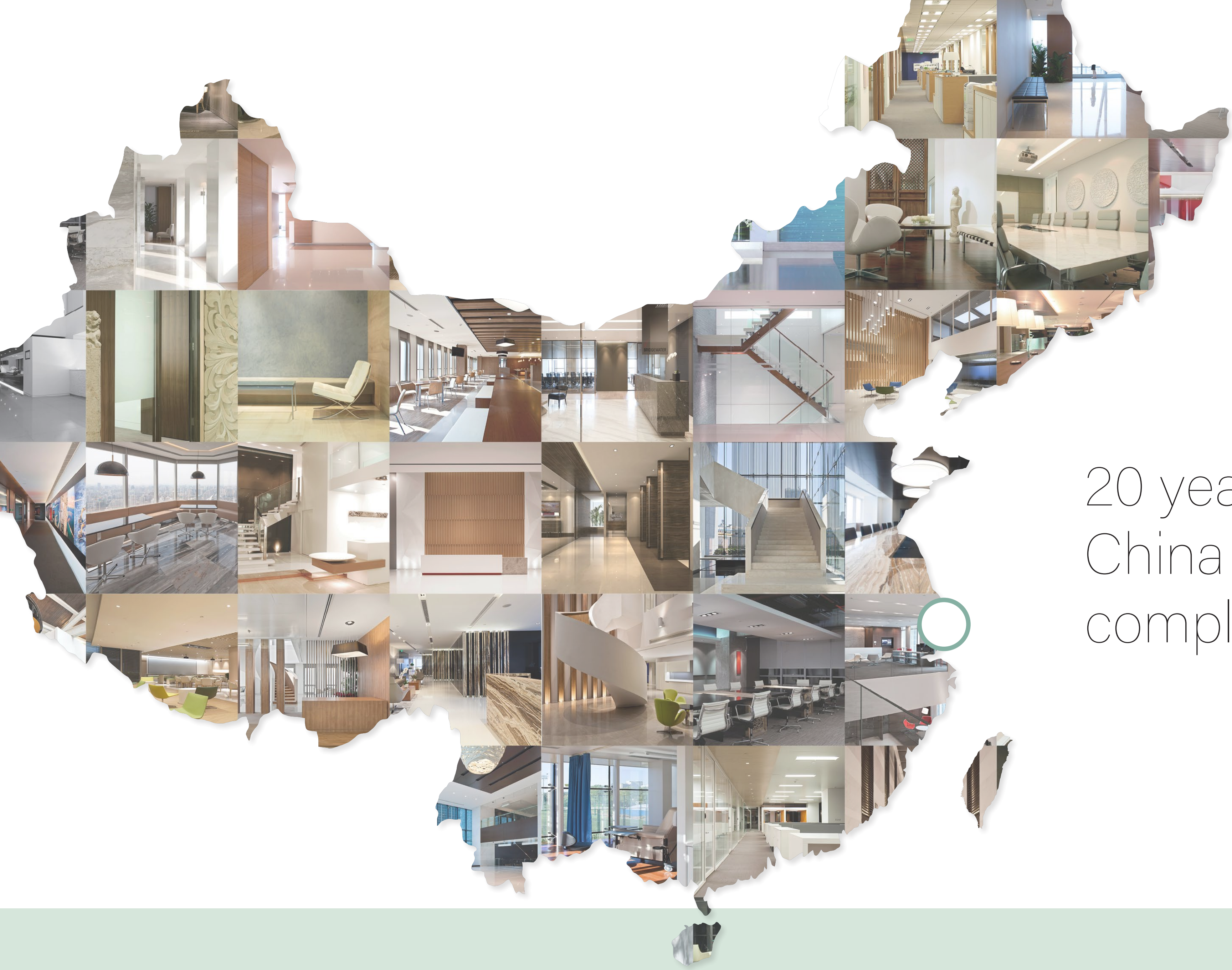
A traditional Chinese landscape painting in ink and light color. It depicts a serene scene with several figures in traditional attire. Some are seated at a long table, while others stand or are engaged in activities. The background features stylized trees and a misty atmosphere. The overall tone is calm and scholarly.

Caring for the Elderly in China

A Contextual Case Study

Presented by Robarts Spaces at the European Healthcare Design Congress
12 June 2018

“ According to the United Nations, China is aging more rapidly than almost any country in recent history.



20 years experience in
China with over 1000
completed projects...

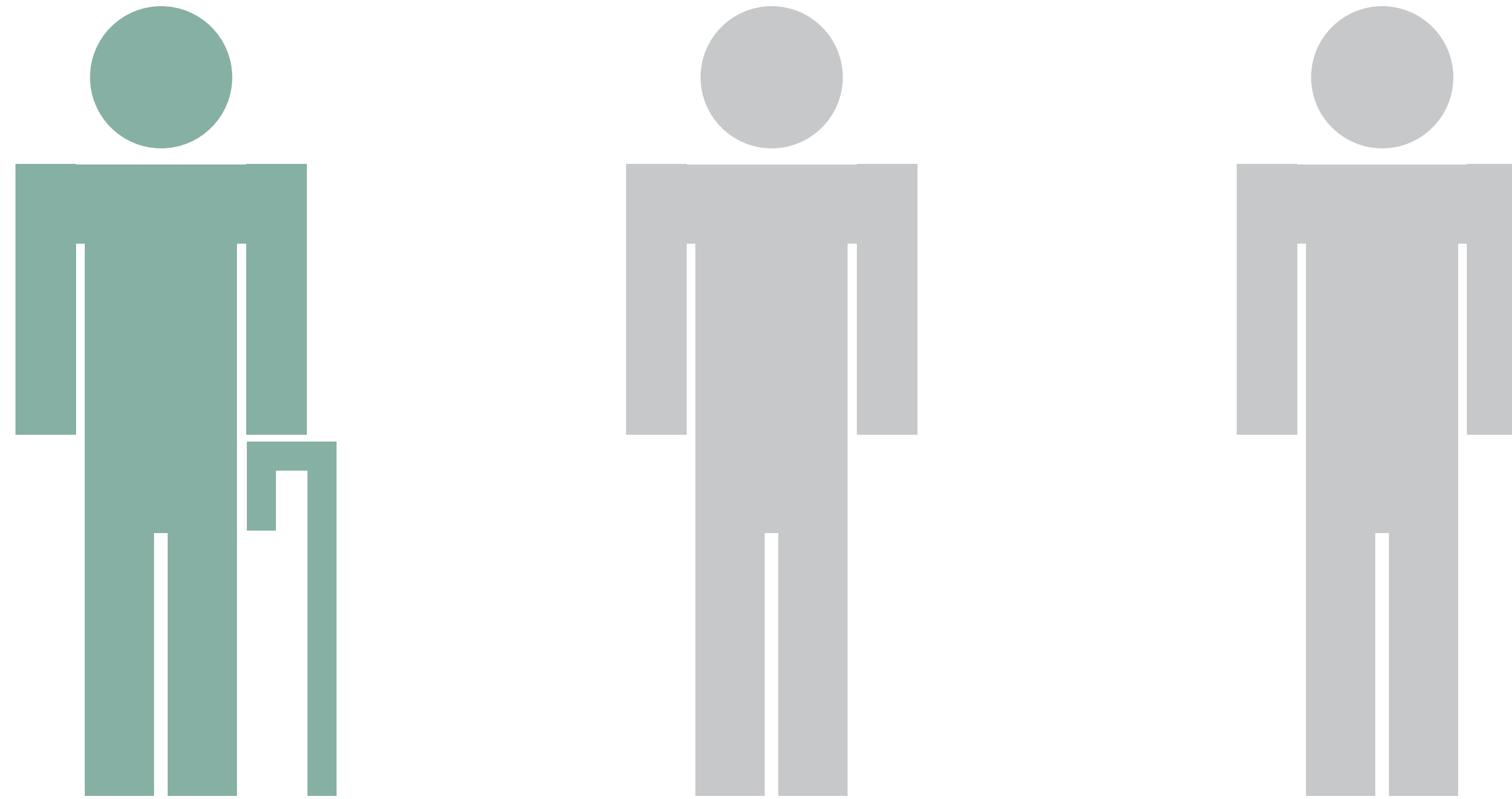


17.3% of China's population is over 60

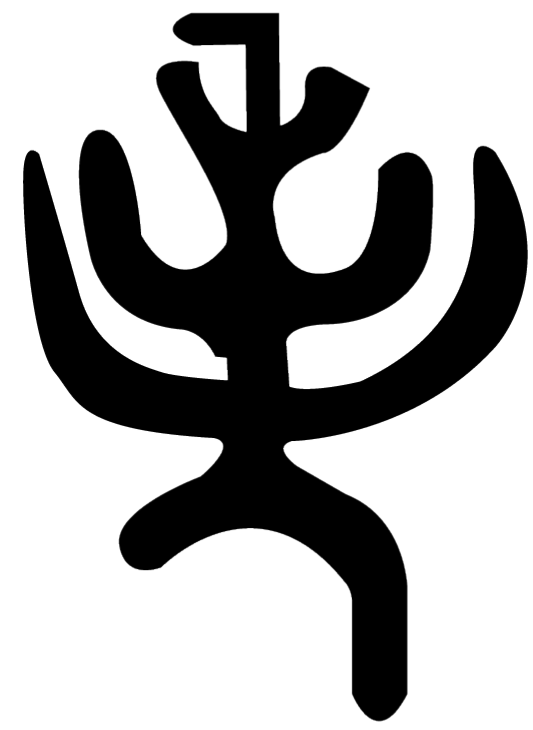
By 2050,



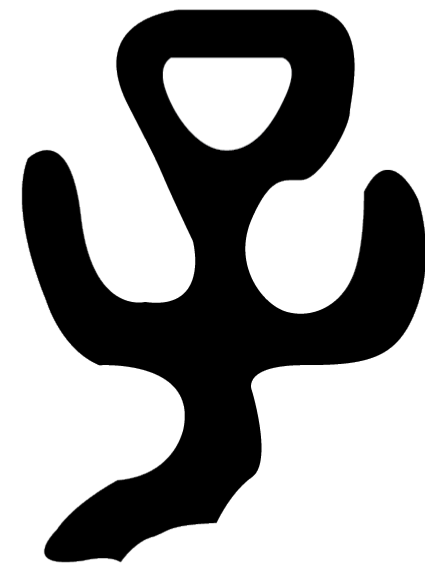
487 million people in China will be over 60



That's almost **1/3** of a population of **1.5 billion** people.



+



=



Elder with long hair

Children and descendants

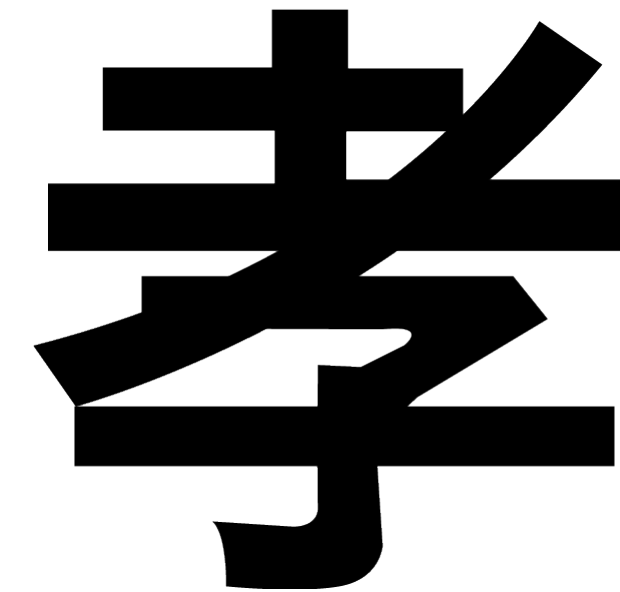
Filial Piety



+



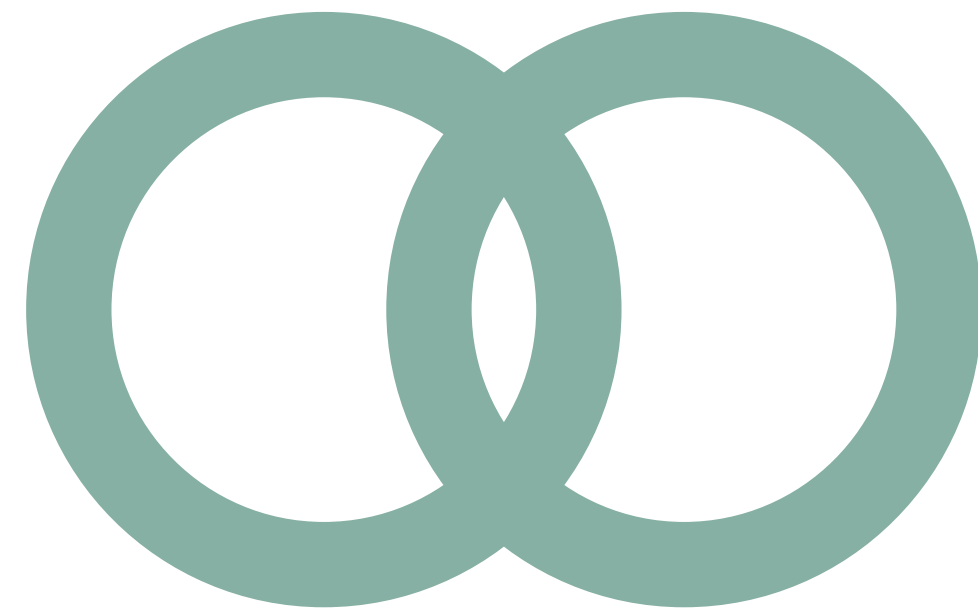
=



Since 1996:



Chinese Constitution



Marriage Law



Criminal Law



Law on the Protection of
the Rights and Interests of
Older People



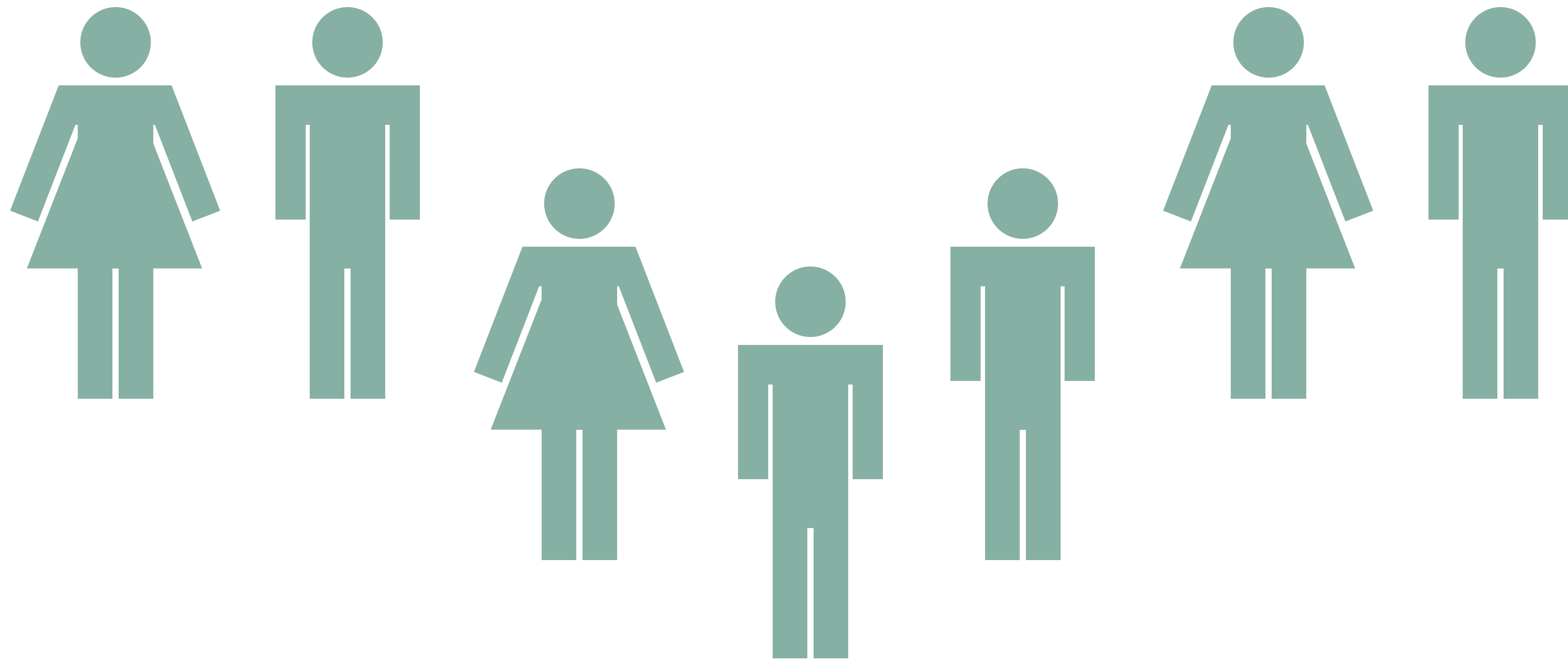
One-Child Policy



One-Child Policy

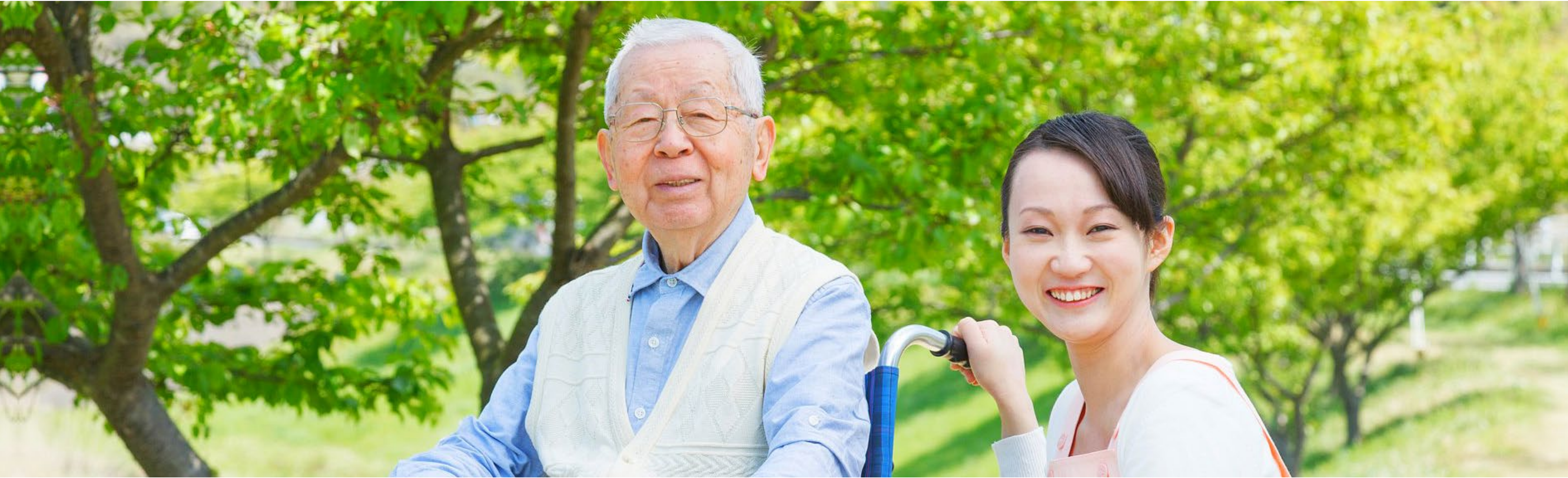


One-Child Policy



One-Child Policy

Private care institutions are becoming long-term solutions



Less than **5-7%** coverage
+10 million people over 60 every year

Our Experience



Taikang Beijing | 2013 - 2015



Taikang Shanghai | 2014- 2016



Taikang Chengdu | 2016 - 2017




Evergreen Homeland | 2016- 2018



Evergreen Homeland Senior Living Facility

Shanghai



30% of the population
of Shanghai is already
over 60 years old



“ The Chinese Government demands an expansion of elderly care capacity to allow for 35-40 beds per thousand elderly persons by the end of 2020.

- 2013 Guidelines on Accelerating the Development of Elder Care Service Industry

Project Brief

Client: Evergreen Medical Holdings

Year Complete: 2018

Size: 10,000 sqm

Building Type: Existing apartment building

Scope of work: Medical planning & interior design

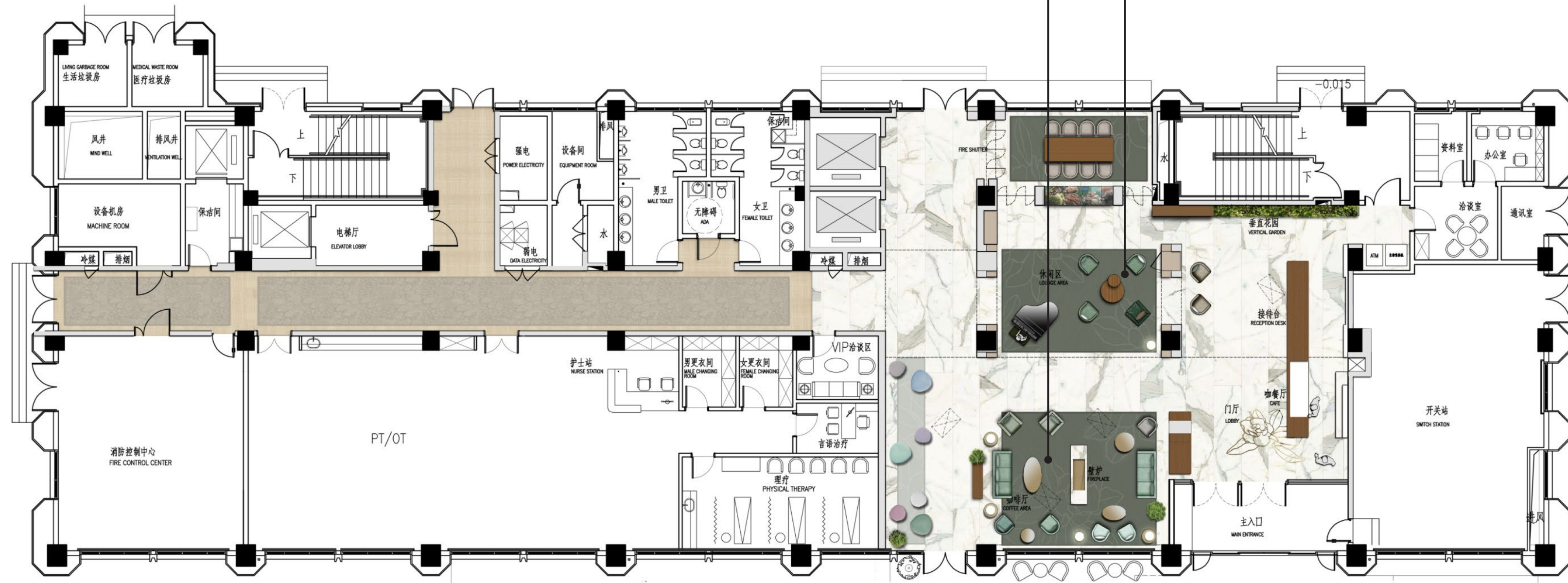
“ We are a community that lives with meaning, nature, culture and trust.

8F	VIP Accommodation
7F	Assisted Living, multi-bed rooms
6F	Assisted Living, multi-bed rooms
5F	Assisted Living, multi-bed rooms
4F	Memory Care ward
3F	Skilled Nursing ward, multi-bed rooms
2F	Imaging, Clinics, Lab & Pharmacy
1F	Physical Therapy, Administration
BF	Morgue, Family Counseling, Filing



The Yaji Scroll

Concept

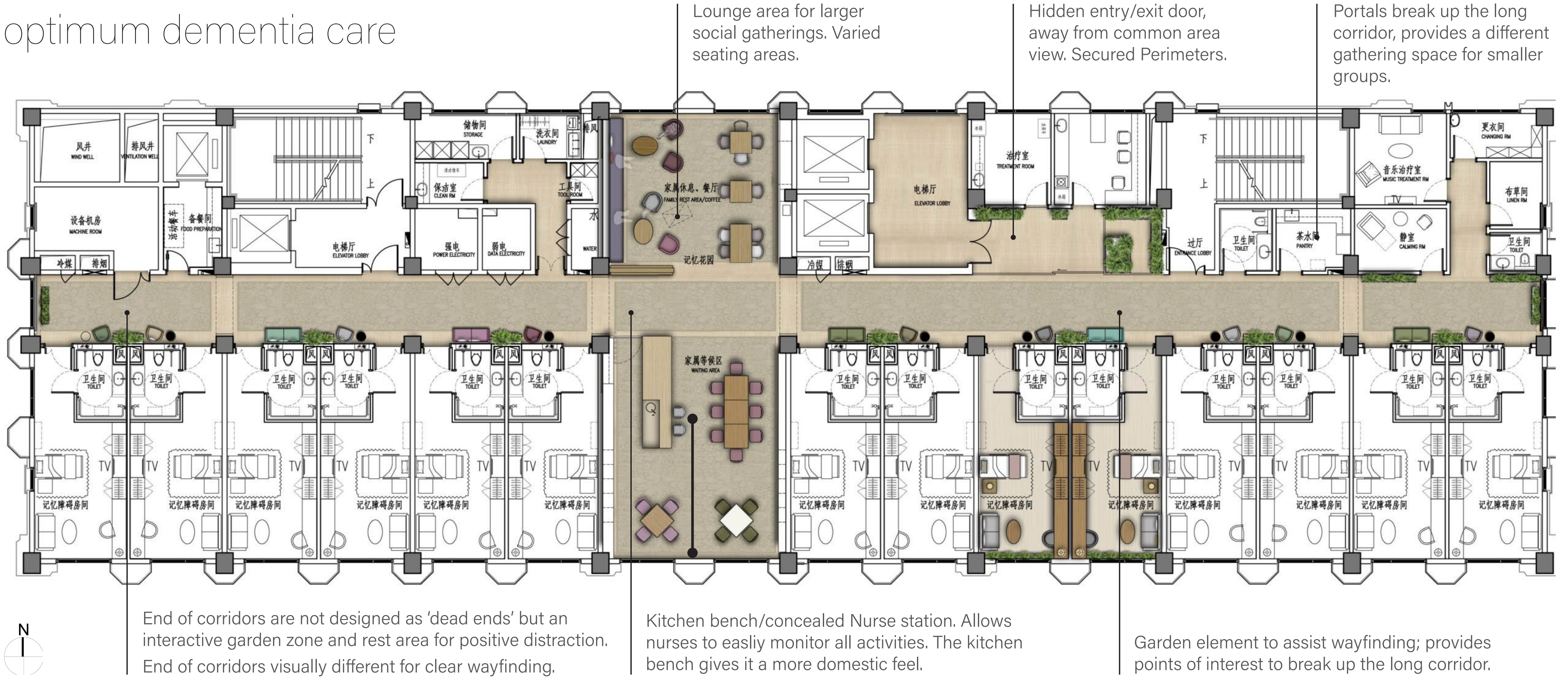






Memory Care Strategies

Ideal size of 14 residents for optimum dementia care



Memory Care Strategies Details (Furniture)



A sense of place...

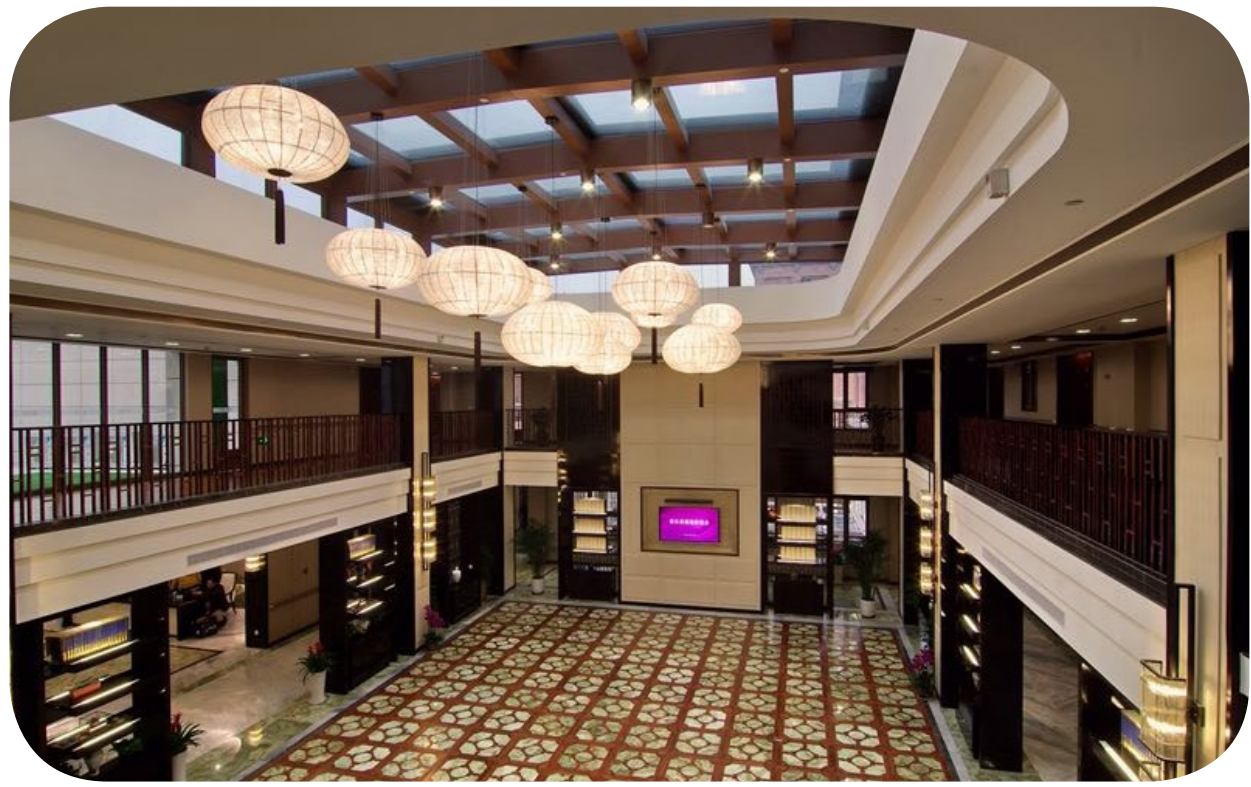


Lift Lobby



Entrance

A sense of compassion...



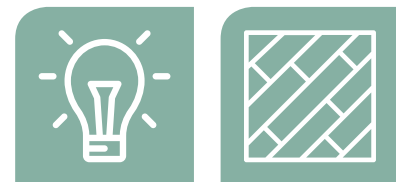
Evergreen Homeland's traditional residential interior



Entrance Lobby with Moon Gate

A sense of community...

4th Floor Social Space



Memory Care Corridor



A sense of safety...



Physiotherapy Room

A sense of life.



VIP Apartment Suite



2-Bed Room



Project Learnings

Risk Management: Planters



Bookshelf Redesign





Key Summary

Conclusion



End of the one-child policy



Pinetree

Sense of Urgency





Thank You