

# HOW MARKHAM STOUFFVILLE HOSPITAL WAS TRANSFORMED INTO AN INTEGRATED WELLNESS COMMUNITY

B+H Architects in Association with Perkins+Will Architects  
EUROPEAN HEALTHCARE DESIGN 2017

Presented by:  
*William P. Nankivell: CEO, Principal, B+H Architects*

# WHO WE ARE



A legacy of over  
**60 Years**  
of achievement



Projects in  
**30+**  
countries



Over  
**50 years** of  
healthcare design  
experience



**350+**  
staff in  
10 integrated studios  
around  
the world



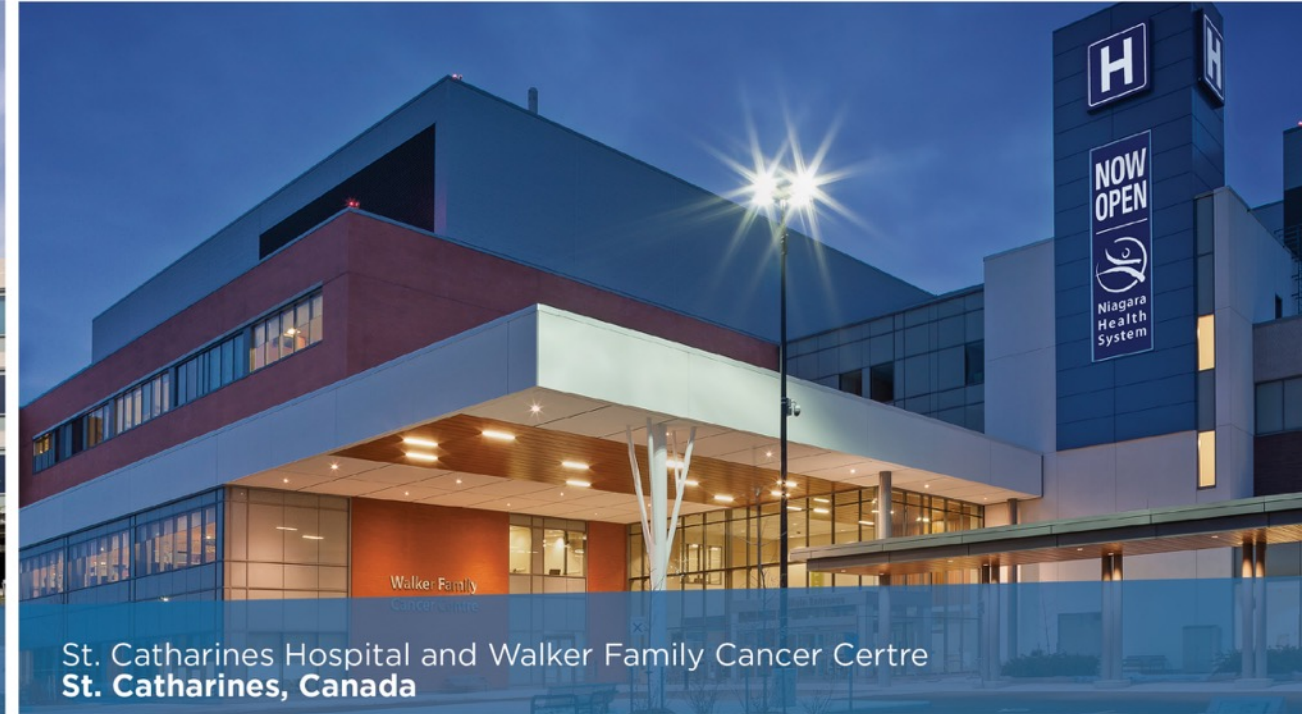
Extensive  
**P3**  
healthcare  
project expertise



**90+**  
healthcare  
projects  
worldwide



Gleneagles Medini Hospital  
Iskandar, Malaysia



St. Catharines Hospital and Walker Family Cancer Centre  
St. Catharines, Canada



Our Lady Mercy Wing, St. Joseph's Health Centre  
Toronto, Canada



Changi General Hospital, The Integrated Building  
Singapore

# MARKHAM STOUFFVILLE HOSPITAL

Markham, Ontario, Canada



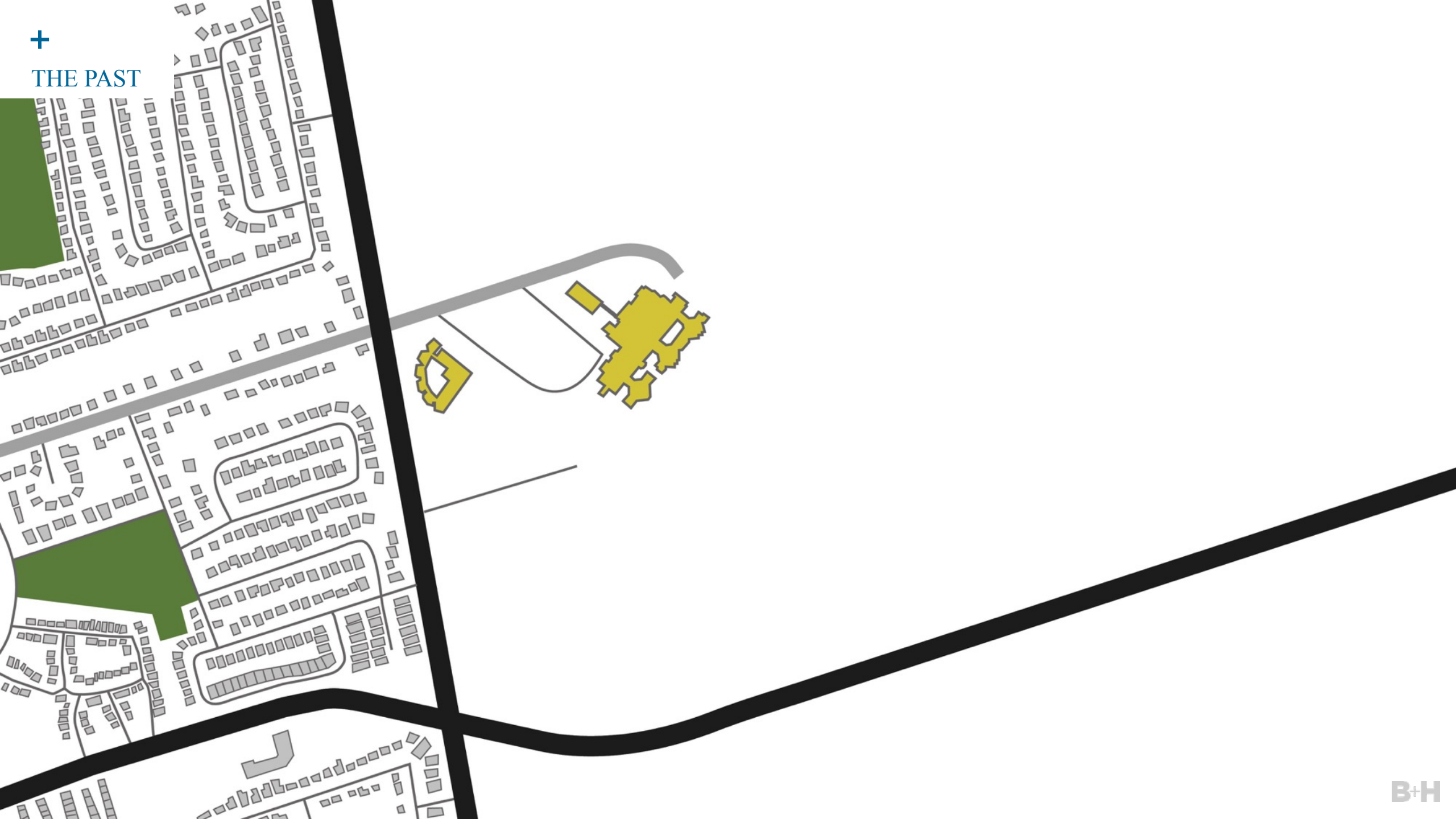


THE PAST





THE PAST





THE PRESENT





# THE FUTURE





1990

+

Markham  
Stouffville  
Hospital



# 1995

+

Cornell  
New Urbanist Neighbourhood



# 2006

+

Markham population  
Increases 70%  
in 15 years

2007

+

Cornell  
Community Centre  
and Library

CORNELL COMMUNITY CENTRE & LIBRARY

Image source: City of Markham

B+H

2007

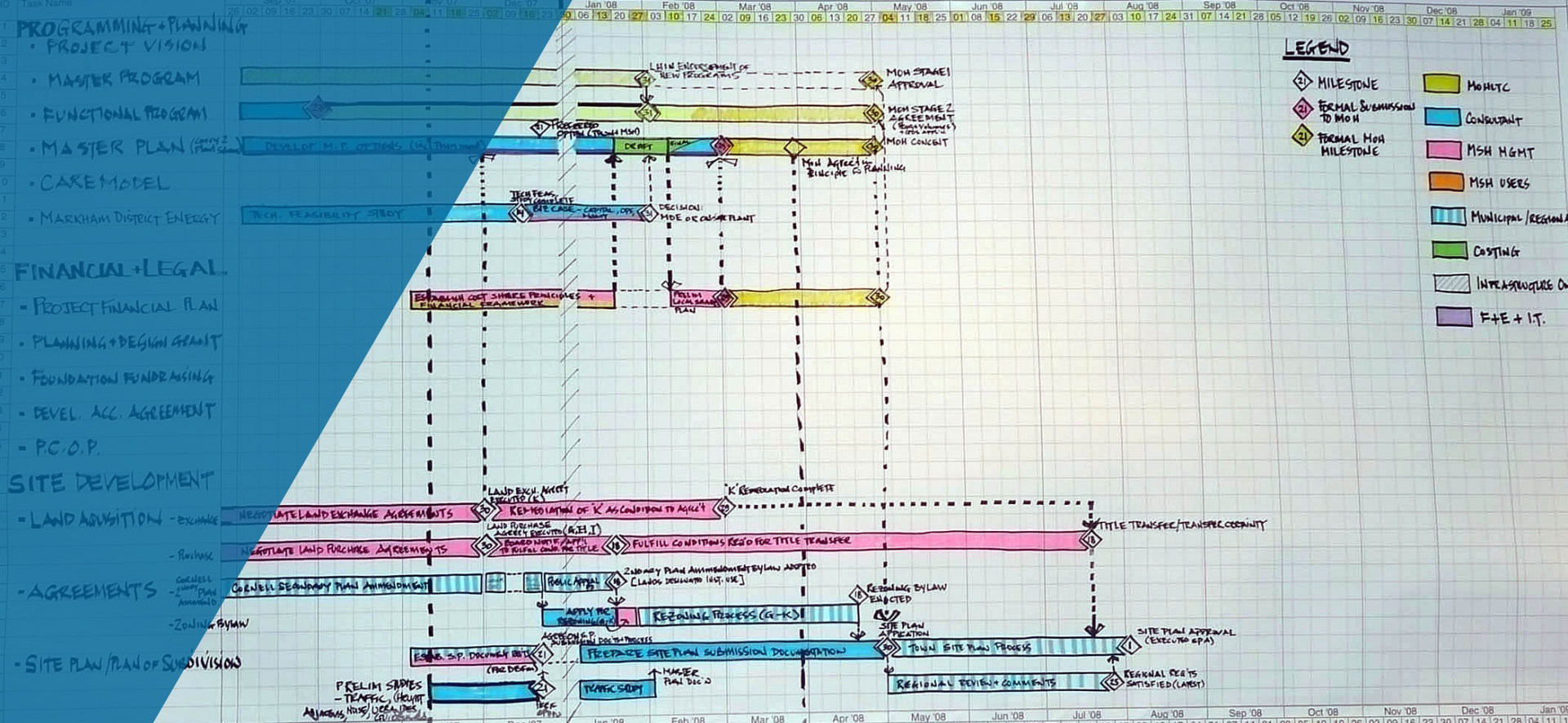
+

B+H and  
Perkins+Will



Planning Synergies

MSH DEVELOPMENT PROJECT SUMMARY SCHEDULE



DRAFT



FACILITY DESIGN

Handwritten notes on orange sticky notes:

- EQUIP Req
- FURN
- I.T. Req. P. law + Req's
- CARE MODEL
- Block - "Most Agri"
- PART 2 incl. P&S study + env. C.D.'s
- PART 1 - overarching principles - F.P. workshop augmentation - Most Agri's
- PART 3
- Home
- U8



Benefits to MSH:



- Medical library
- Therapy pool
- Physical rehabilitation facilities
- Presentation theatre
- Snoezelen room



## Benefits to Markham:

- Building site
- Operational efficiencies
- Increased usage of facilities
- Development of surrounding neighbourhood
- Enhanced community health and wellness
- Long term expansion and regeneration





Benefits to Markham:



- Building site
- Operational efficiencies
- Increased usage of facilities
- Development of surrounding neighbourhood
- Enhanced community health and wellness
- Long term expansion and regeneration



# CREATING THE WELLNESS COMMUNITY

Translating the project vision, priorities  
and goals into reality

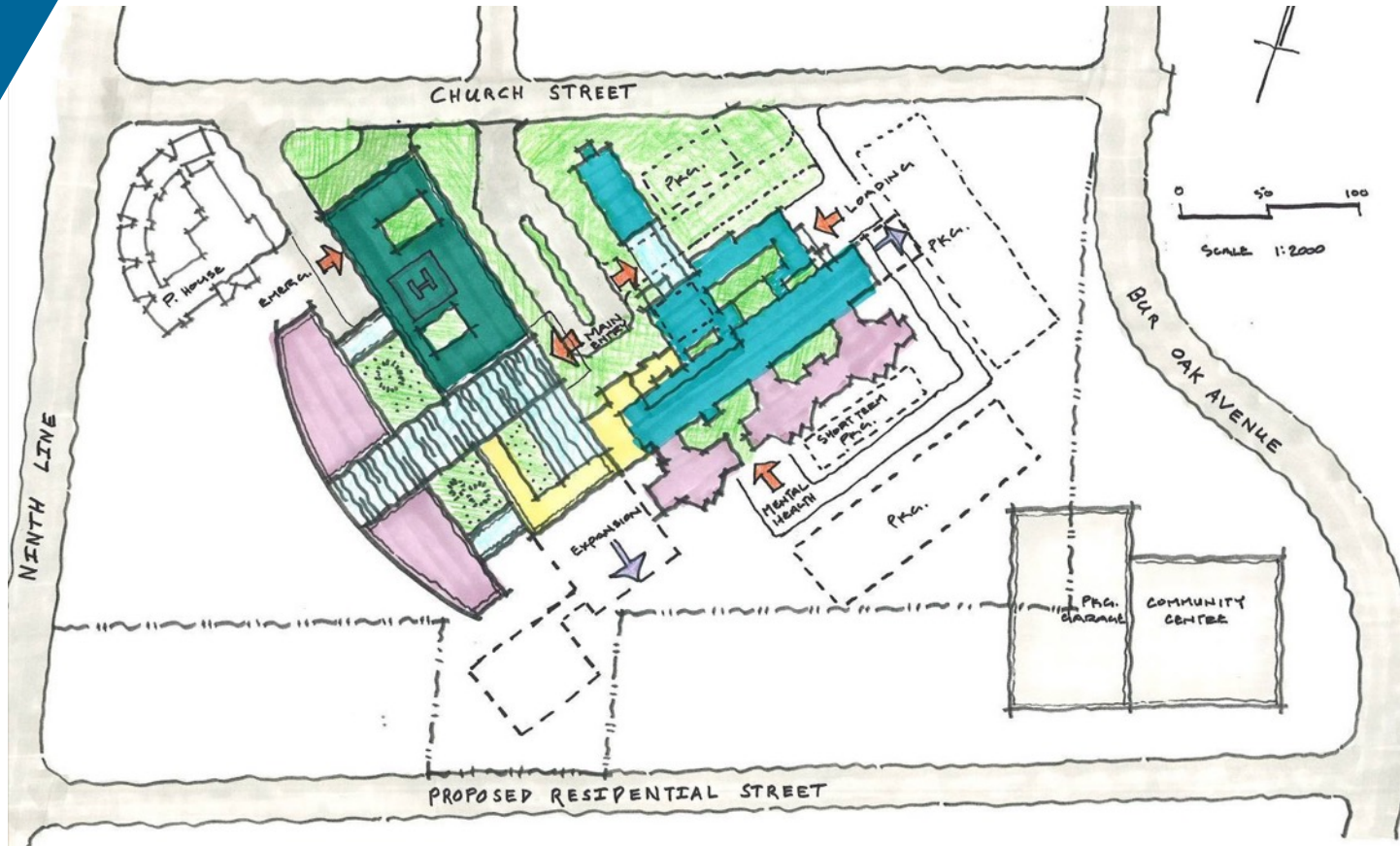


Project Objective:



Capitalize on the site and existing facilities, and enable future growth.

Option 1  
“Crossroads”

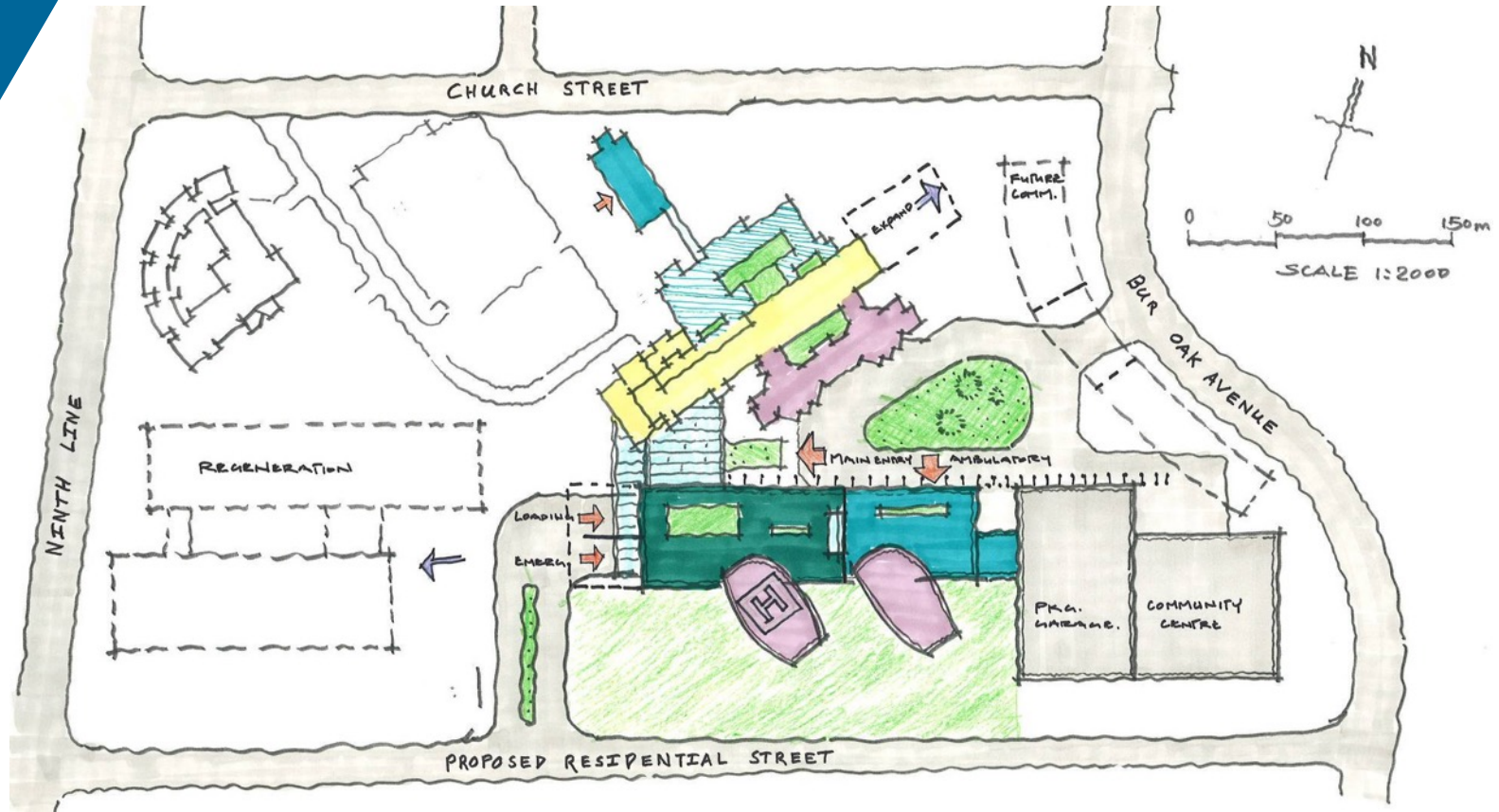


Project Objective:



Capitalize on the site and existing facilities, and enable future growth.

Option 2  
“Campus”

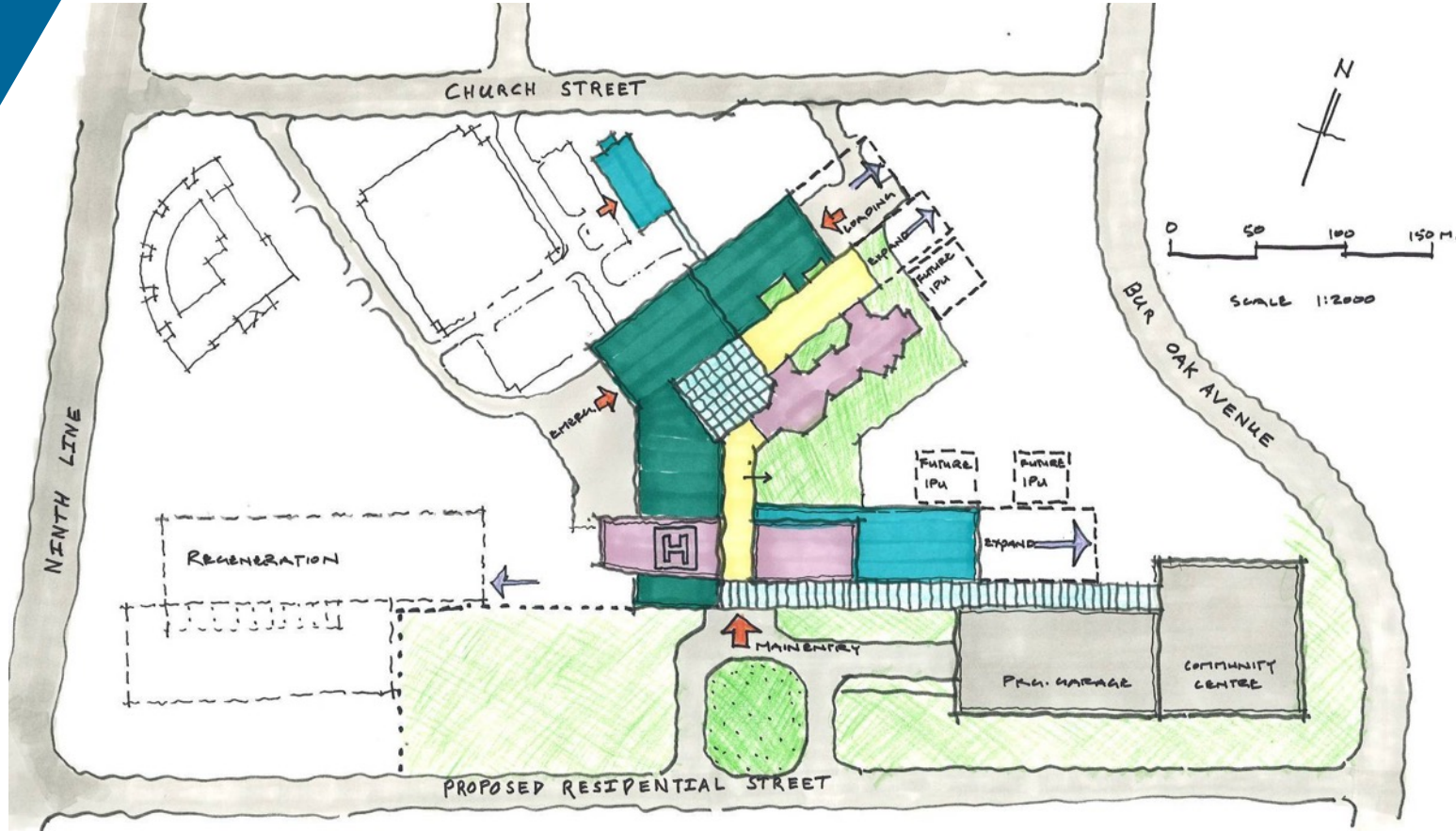


Project Objective:



Capitalize on the site and existing facilities, and enable future growth.

Option 3  
“Commons”

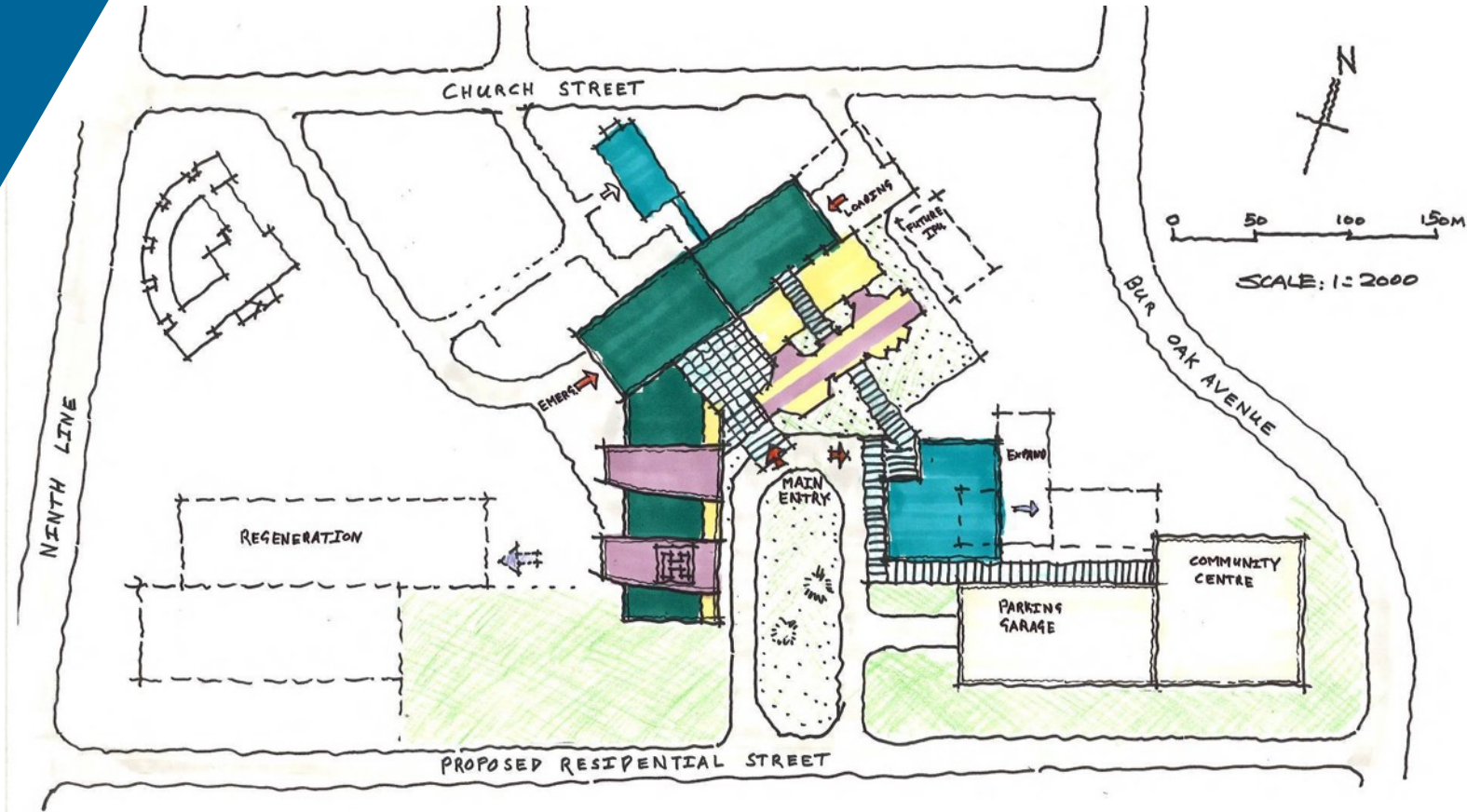


Project Objective:



Capitalize on the site and existing facilities, and enable future growth.

Option 4  
“Campus Commons”

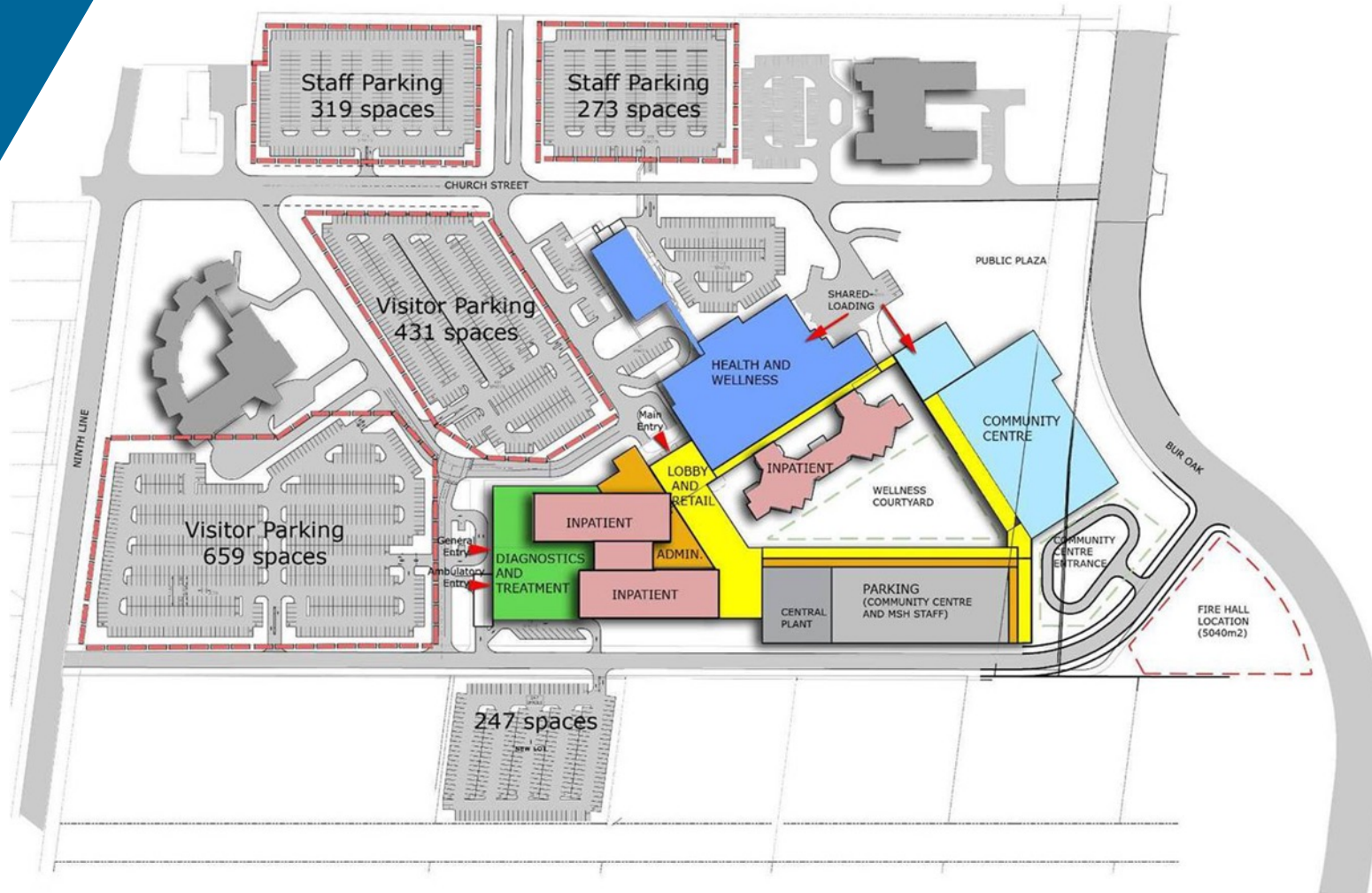


Project Objective:



Capitalize on the site and existing facilities, and enable future growth.

Option 5  
“Vertical Campus”



Physical and  
operational integration:

+

- Co-location of facilities
- Physical connections
- Shared spaces
- Cross-programming

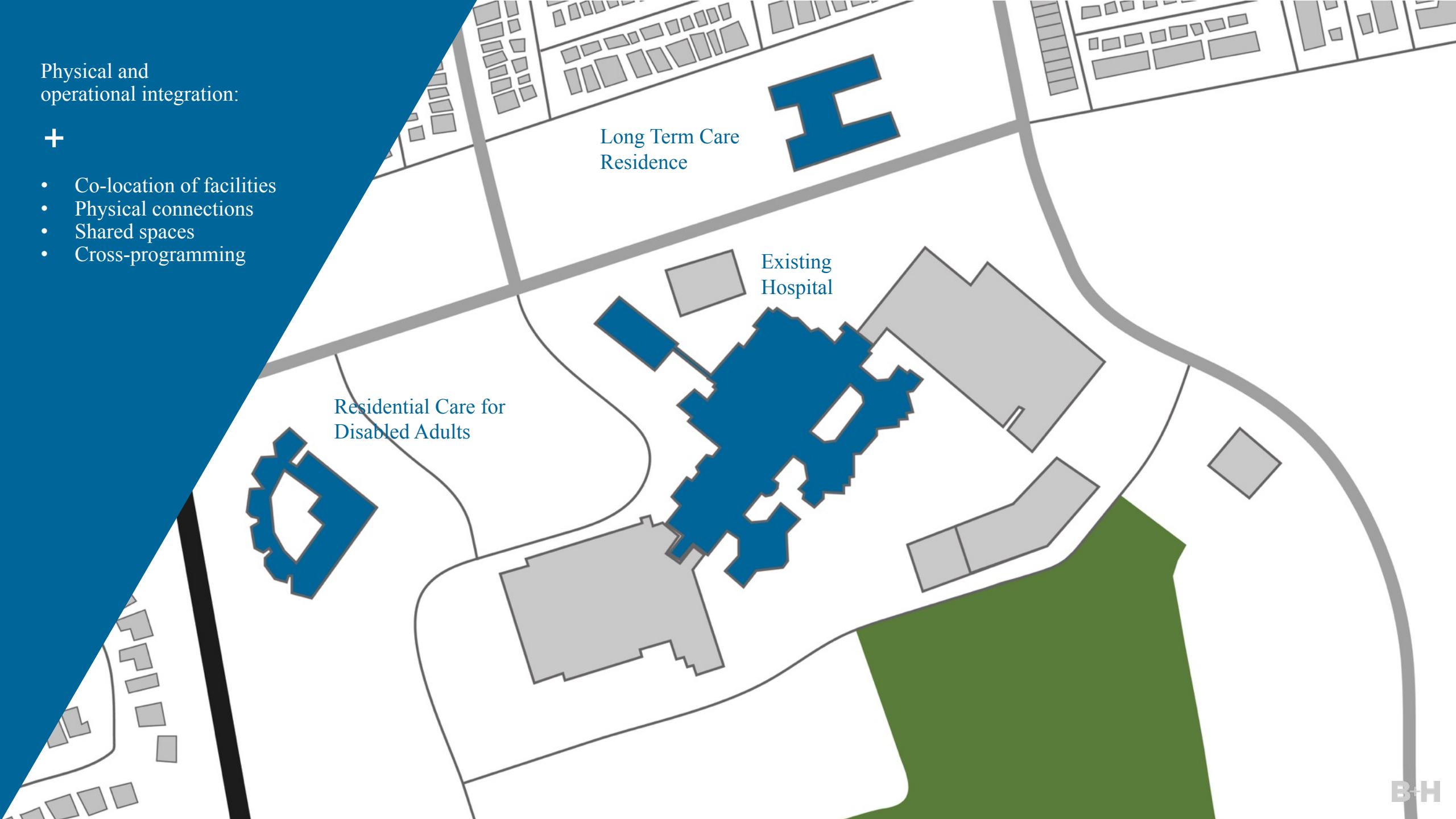




Physical and operational integration:



- Co-location of facilities
- Physical connections
- Shared spaces
- Cross-programming



Long Term Care Residence

Existing Hospital

Residential Care for Disabled Adults

Physical and operational integration:



- Co-location of facilities
- Physical connections
- Shared spaces
- Cross-programming

New Medical Office Building



Physical and operational integration:



- Co-location of facilities
- Physical connections
- Shared spaces
- Cross-programming

New Hospital Expansion



Physical and operational integration:



- Co-location of facilities
- Physical connections
- Shared spaces
- Cross-programming

New Community  
Recreation Centre &  
Public Library



Physical and operational integration:



- Co-location of facilities
- Physical connections
- Shared spaces
- Cross-programming

New Community  
Centre Parking  
Garage



Physical and operational integration:



- Co-location of facilities
- Physical connections
- Shared spaces
- Cross-programming

New District  
Energy Plant



Physical and operational integration:



- Co-location of facilities
- Physical connections
- Shared spaces
- Cross-programming

New Fire Station



Project Objective:



Reinforce connections to the community.









5 minute walk

10 minute walk

15 minute walk



MARKHAM-STOUFFVILLE HOSPITAL

Markham  
Stouffville  
Hospital

STOP

STOP

NO PARKING  
EXCEPT FOR  
EMERGENCY  
VEHICLES



Project Objective:



Central to the transformation of MSH was the landscape design and connections to nature.



Project Objective:



Create a sense of place.







12:57:43

SIEMENS

SOMATOM  
Definition AS

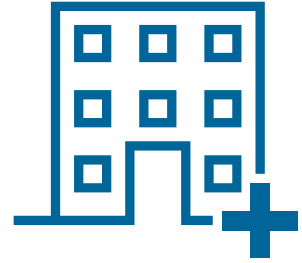


# OPPORTUNITIES FOR FUTURE APPLICATION

SENGKANG COMMUNITY HOSPITAL

Opportunities for  
Future Application:

+




New or existing facility



Urban, suburban or  
rural context



Global model

A photograph of a modern healthcare building with a courtyard. The building has a mix of dark and light panels and large glass windows. A prominent white 'H' logo is visible on the dark facade. The courtyard in the foreground is covered in snow and features several wooden benches under a pergola structure. A blue diagonal graphic element is on the right side of the image.

“ Frequently dubbed health districts or health villages, the concept of a healthcare component serving as a community anchor that influences an overall wellness-focused lifestyle is picking up plenty of steam.”

-Healthcare Design Magazine, 2014



Integrated Building, Changi  
General Hospital, Singapore





Integrated Building, Changi  
General Hospital, Singapore





Integrated Building, Changi  
General Hospital, Singapore





Integrated Building, Changi  
General Hospital, Singapore





Woodlands Integrated  
Healthcare Campus  
(Shortlisted Design  
Competition Entry), Singapore







Woodlands Integrated  
Healthcare Campus  
(Shortlisted Design  
Competition Entry), Singapore





Woodlands Integrated  
Healthcare Campus  
(Shortlisted Design  
Competition Entry), Singapore

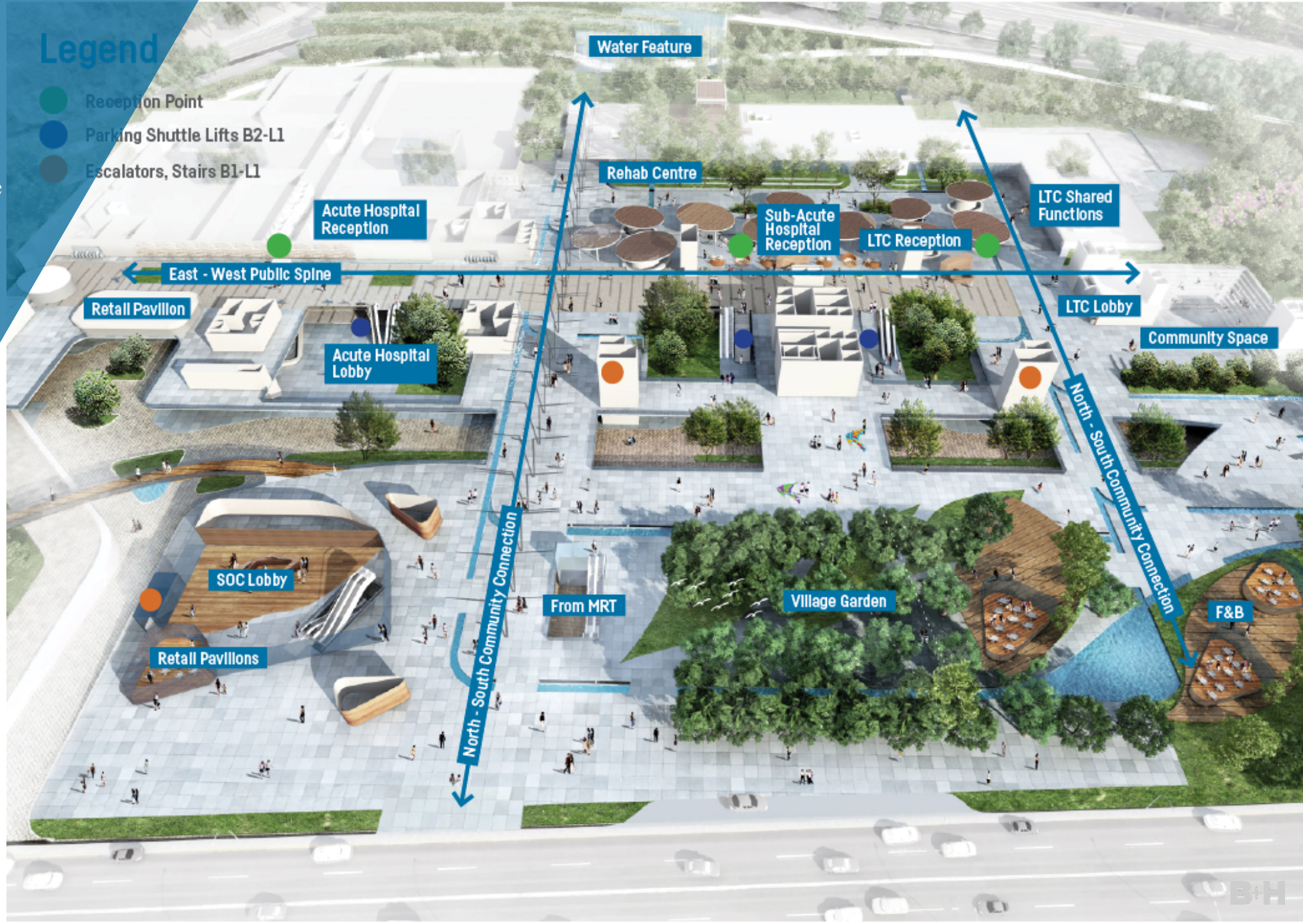




Woodlands Integrated  
Healthcare Campus  
(Shortlisted Design  
Competition Entry), Singapore

## Legend

- Reception Point
- Parking Shuttle Lifts B2-L1
- Escalators, Stairs B1-L1





Our Lady Mercy Wing,  
St. Joseph's Health Centre, Toronto





Our Lady Mercy Wing,  
St. Joseph's Health Centre, Toronto



A photograph of a modern multi-story building at dusk, with a blue overlay and a large 'THANK YOU' text. The building has a prominent glass facade and a brick section. A blue 'H' sign is visible on the brick section. The foreground shows a snowy area with some trees and a fence. The sky is a deep blue, and there are some light trails in the bottom right corner.

THANK YOU