

P21+ Repeatabe Room and Standard Component iPad and Web Application to P22 VR Hospital

Pat Pemberton, Senior Health Consultant, Interserve
Rosemary Jenssen, Working Group Lead, Kier



P22 Framework Efficiency and Productivity Programme

Pat Pemberton, Senior Health Consultant, Interserve



Key Achievements under P21/P21+

P21 achieved
£4.5 billion
registered work

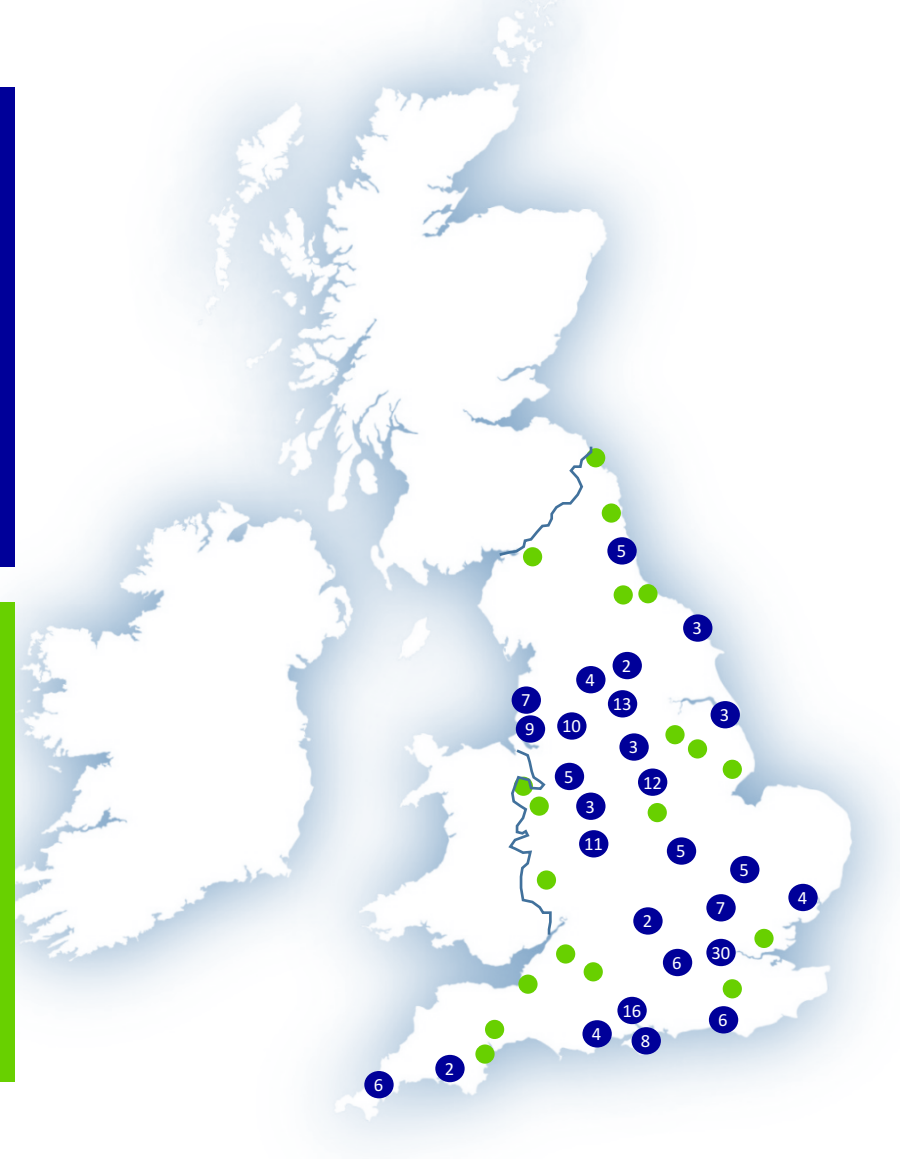
P21+ currently
£4.2 billion
registered work

P22 approx.
£450 million
registered

Safety
92%

Predictability
Cost
97%

Predictability
Time
91%



Key Achievements under P21/P21+

Client
satisfaction
service
87%

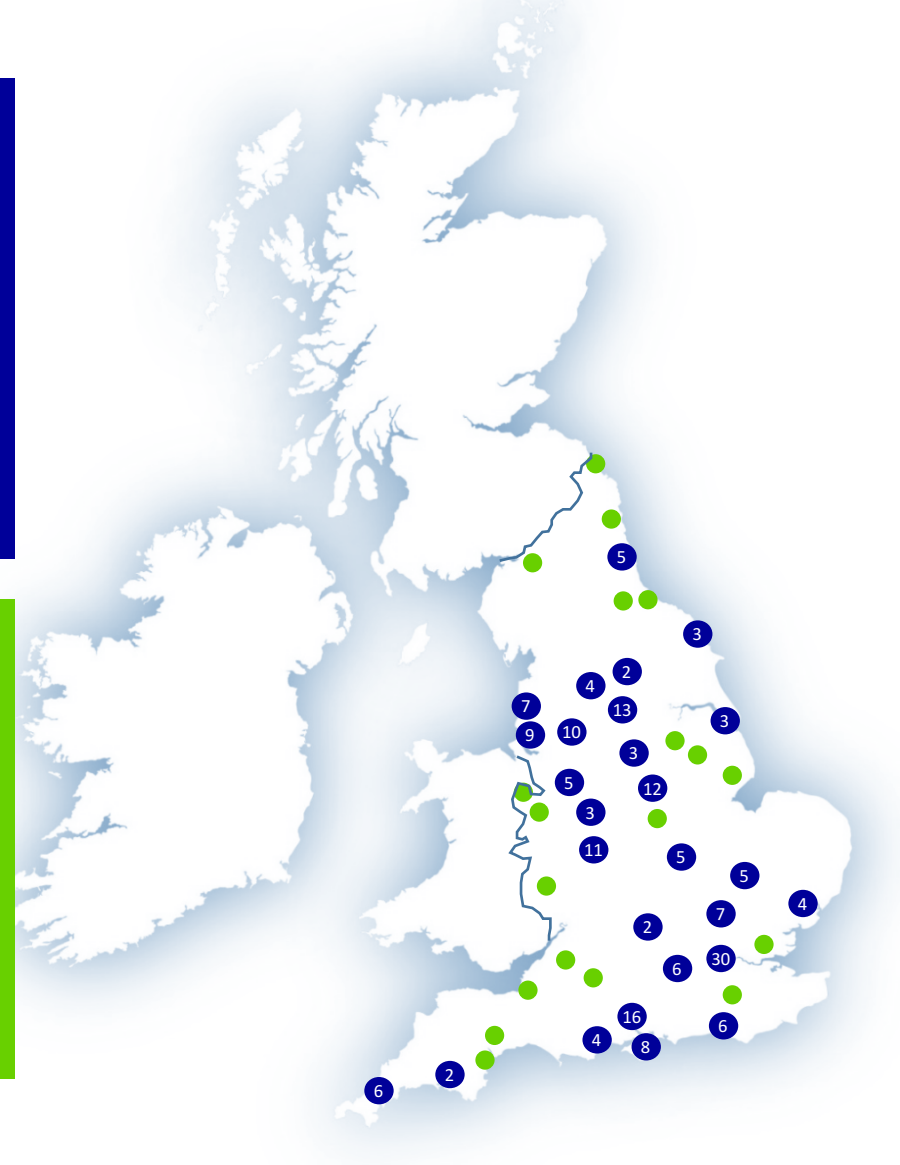
Client
satisfaction
product
83%

Defects
82%

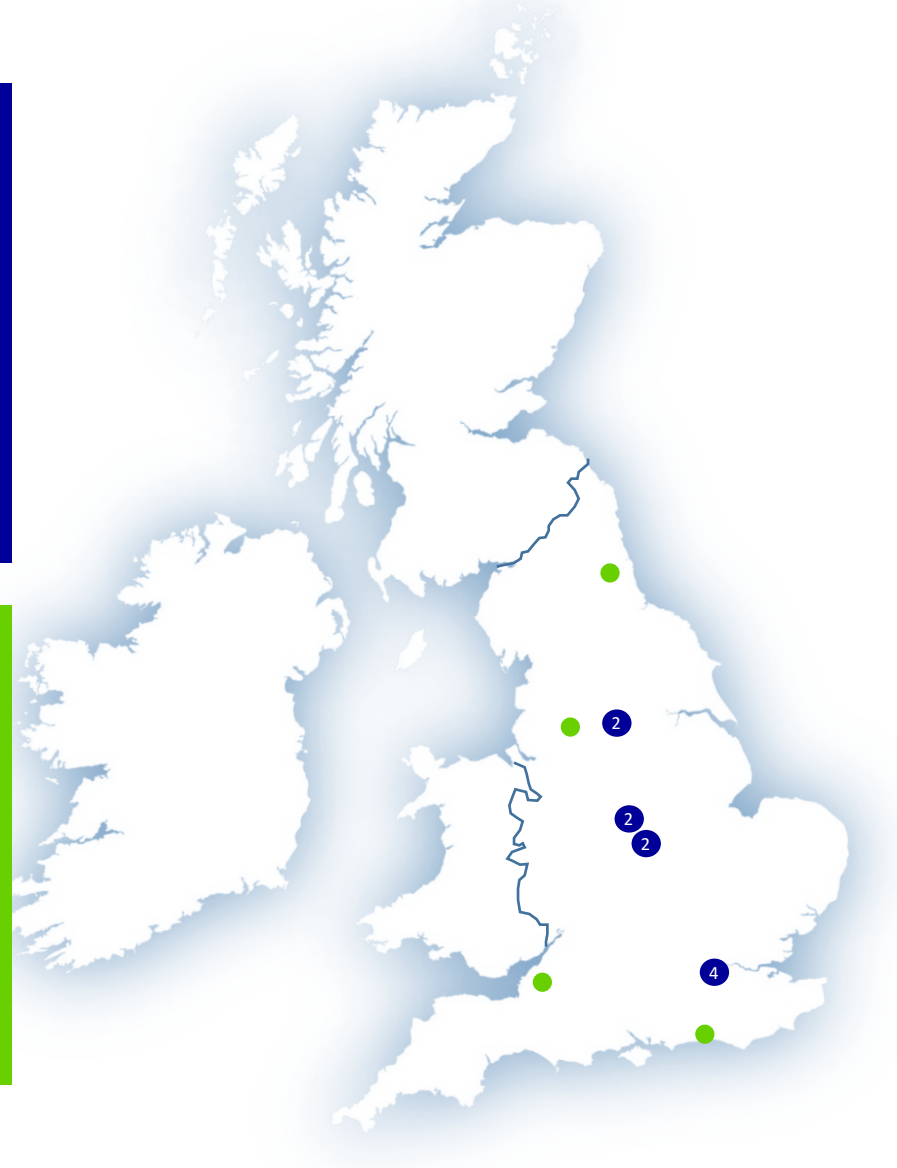
P21+ achieved
15%
GCS
Cost Efficiency
Savings

Repeatable
Rooms &
Standard
Assemblies and
Components

P21+
Projectshare
Design information
over 100 P21+
Projects



ProCure 22 Principal Supply Chain Partners



ProCure 22 Efficiency + Productivity Programme



Improve Service
User/Patient
Experience

Reduce re-design
that re-occur
in high volume

Benefits
Realisation

**Improved Outcomes
Increased Efficiency**

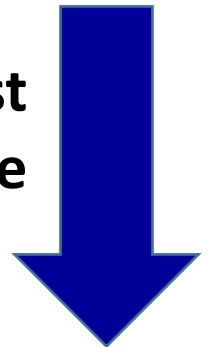


Delivering an
operational facility
ahead of
schedule

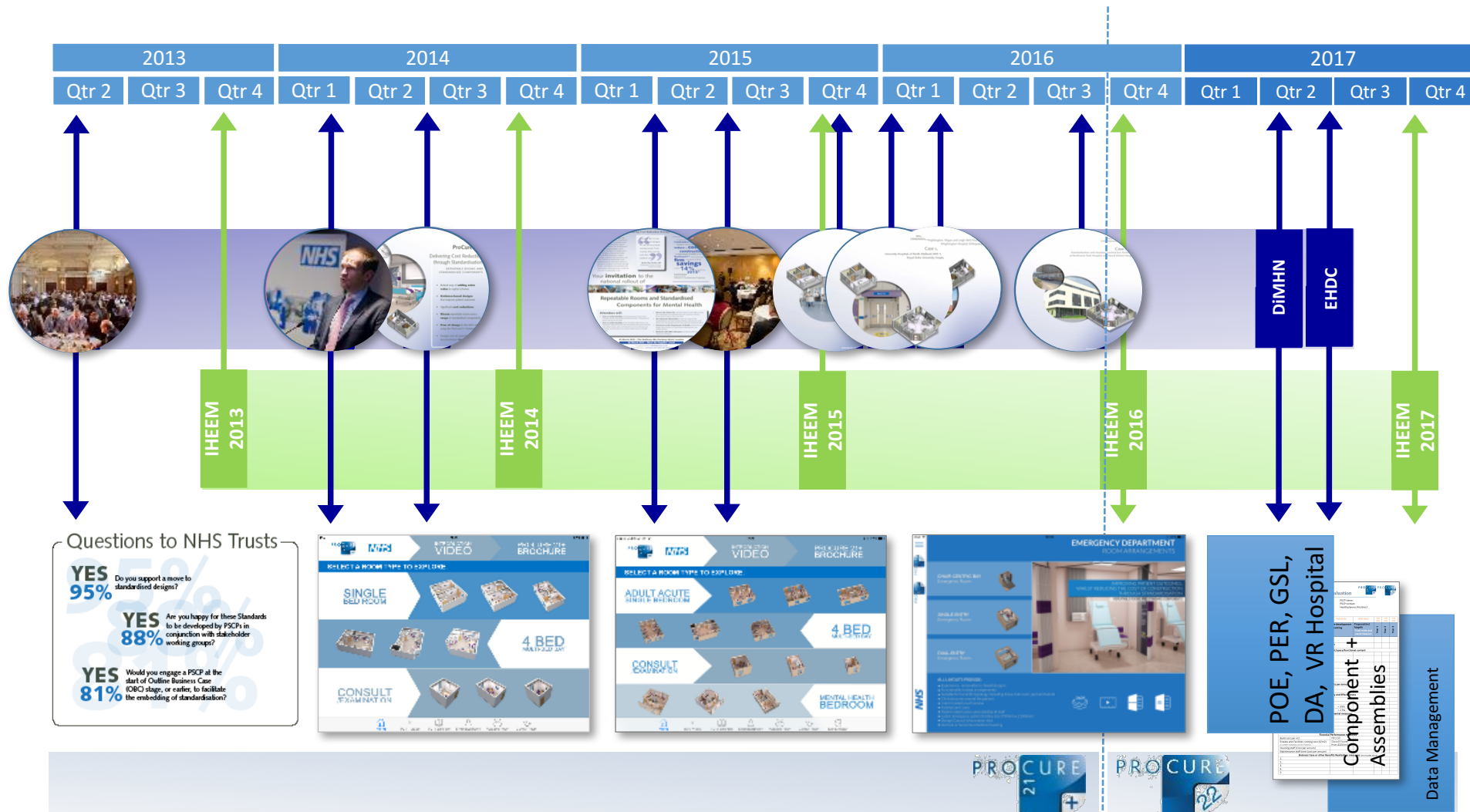
Government
Construction
Strategy

Enable Clinical
Staff to focus
on patient care

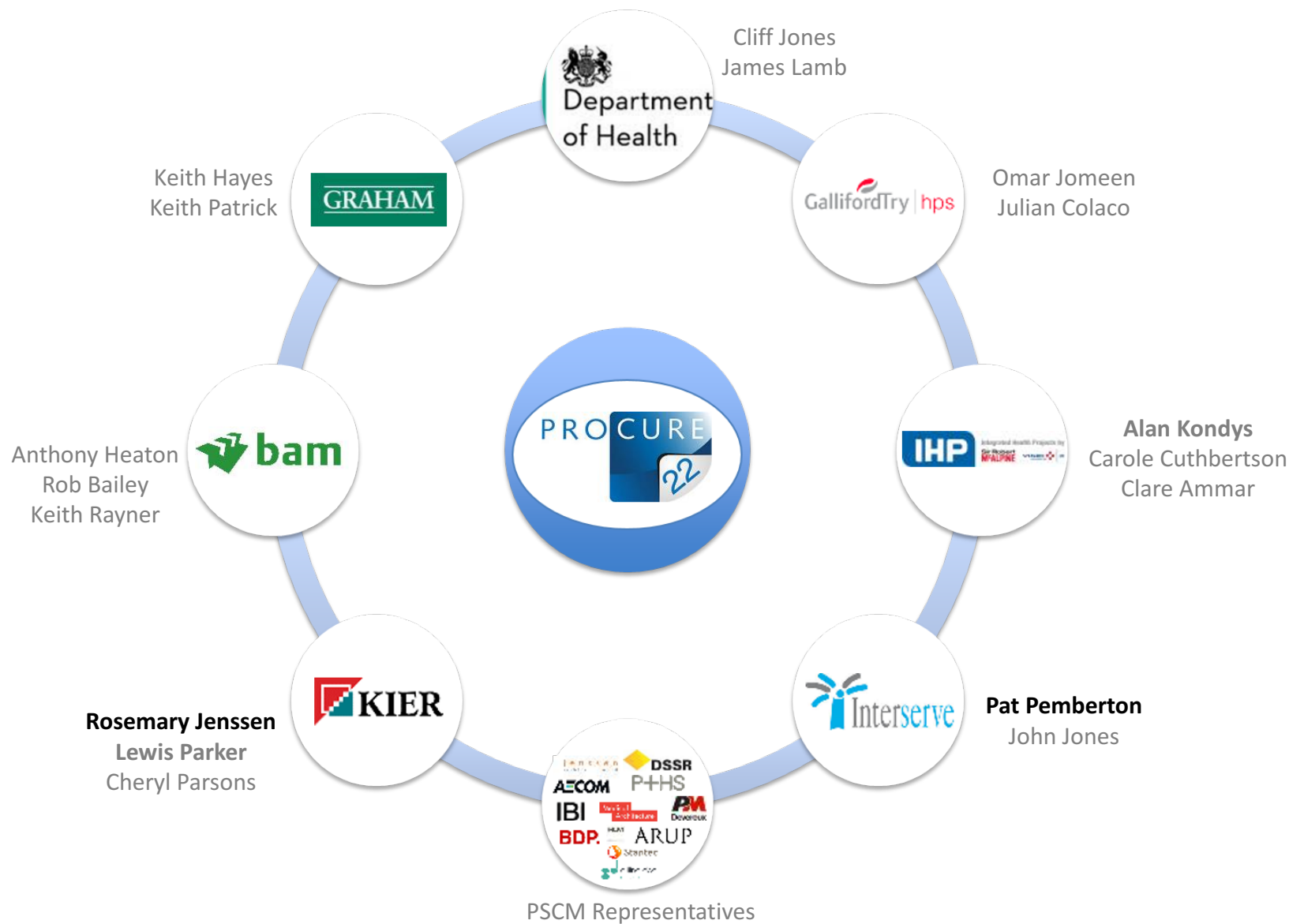
**Reduced Cost
Reduced Time**



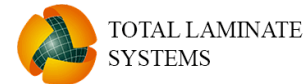
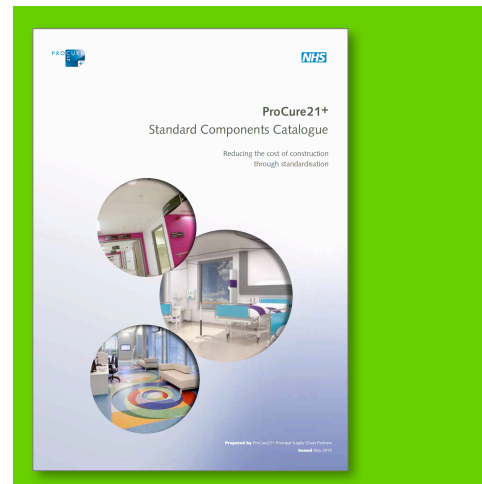
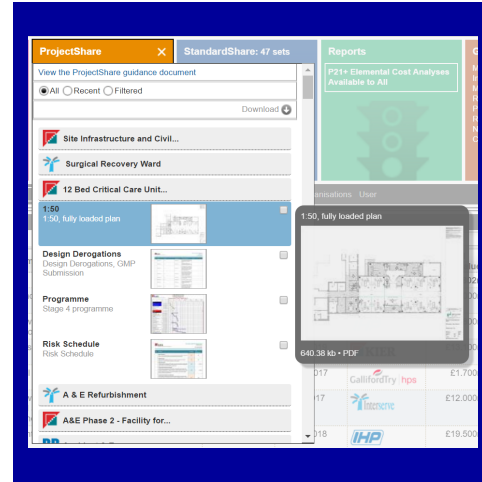
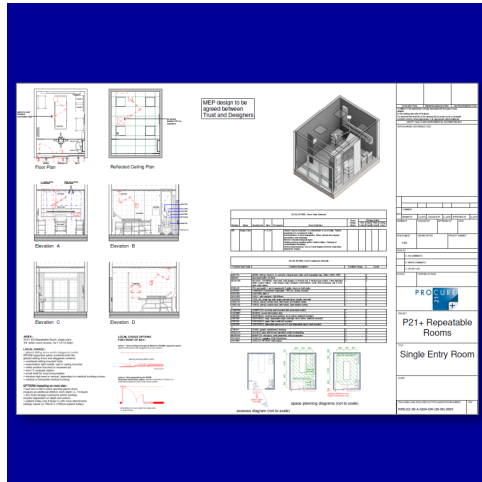
Efficiency + Productive Programme Timeline



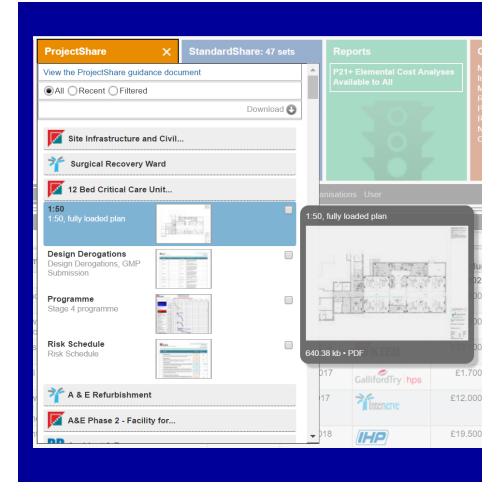
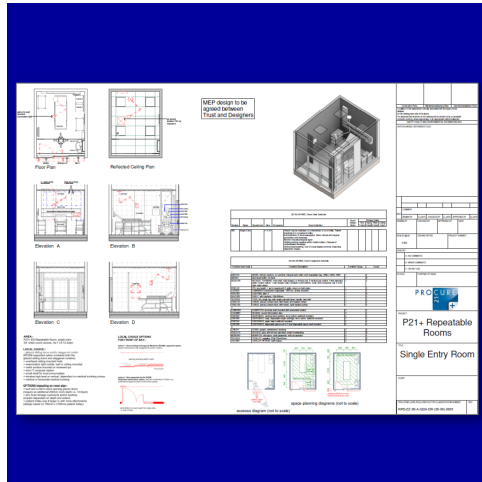
P22 Virtual Team



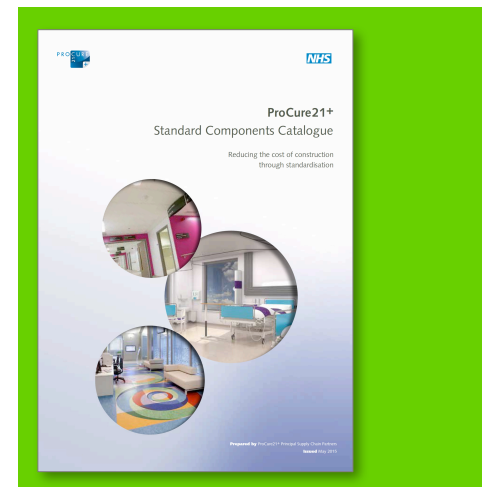
ProCure 22 Efficiency + Productivity Programme



ProCure 22 Efficiency + Productivity Programme



- London North West Healthcare NHS
- Basildon and Thurrock General Hospitals NHS Trust NHS
- University College London Hospitals NHS
- York Teaching Hospital NHS Foundation Trust NHS
- Airedale NHS Foundation Trust NHS
- Chelsea and Westminster Hospital NHS Foundation Trust NHS
- Gateshead Health NHS Foundation Trust NHS
- Wrightington, Wigan and Leigh NHS Foundation Trust NHS
- Cambridge University Hospitals NHS Foundation Trust NHS
- East and North Hertfordshire NHS Trust NHS
- St George's Healthcare NHS Trust NHS
- Oxleas NHS Foundation Trust NHS
- The North West London Hospitals NHS Trust NHS
- Royal Free London NHS Foundation Trust NHS
- Barts Health NHS Trust NHS
- Doncaster and Bassetlaw Hospitals NHS Foundation Trust NHS
- University Hospitals of North Midlands NHS Trust NHS
- Bridgewater Community Healthcare NHS Foundation Trust NHS
- Salford Royal NHS Foundation Trust NHS
- Croydon Health Services NHS Trust NHS
- Heart of England NHS Foundation Trust NHS
- Frimley Health NHS Foundation Trust NHS



iPad and Web App to P22 VR Hospital

Rosemary Jenssen, Working Group Lead, Kier





PROCURE



PROCURE

Select

Room type to explore

Here some text, short
descriptions or guide how
navigate in the app.

**NHS**

ADULT ACUTE SINGLE BEDROOM



4 BED MULTI-BED BAY



CONSULT/EXAMINATION



MENTAL HEALTH BEDROOM



EMERGENCY DEPARTMENT ROOM



EMERGENCY DEPARTMENT

ROOM ARRANGEMENTS



PROCURE



PROCURE

CHAIR-CENTRIC BAY

Emergency Room



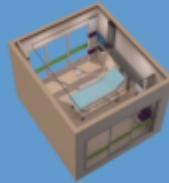
SINGLE-ENTRY

Emergency Room



DUAL-ENTRY

Emergency Room



IMPROVING PATIENT OUTCOMES,
WHILST REDUCING THE COST OF CONSTRUCTION
THROUGH STANDARDISATION

REPEATABLE ROOMS AND STANDARD COMPONENTS

ALL LAYOUTS PROVIDE:

- Experience- and evidence-based designs
- Functionality tested arrangements
- Suitable for local ED typology including linear, ball room, pod and hybrid
- Clinician zone around the patient
- 3 and 4 sided couch access
- Family/carer zone
- Patient observation and visibility of staff
- Latest emergency patient trolley size (750mm x 2100mm)
- Design Council information slice
- Vertical or horizontal medical trunking



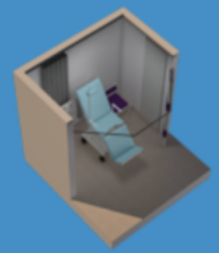
CHAIR-CENTRIC

SINGLE ENTRY

DUAL ENTRY



EMERGENCY DEPARTMENT - CHAIR CENTRIC BAY



Chair-centric bay
NIA 5.1m²

This layout provides:
- Vertical patient pathway optimisation
- Smallest footprint (5.1m² NIA)

All layouts provide:
- Experience- and evidence-based designs
- Functionality tested arrangements
- Suitable for local ED typology including linear, ball room, pod and hybrid
- Clinician zone around the patient
- Family/carer zone
- Patient observation and visibility of staff
- Integrated Design Council information slice (reducing violence and aggression)
- Clinical wash hand basin
- Same handed
- Artwork

tap to close

LAYOUT TO SELECT PANORAMIC

Emergency Dept - Chair Centric



CHAIR-CENTRIC

SINGLE ENTRY

DUAL ENTRY



CLICK LAYOUT TO SELECT PANORAMIC

Bay 6

In Resus we treat people who have potentially life-threatening injuries or illness.

We aim to treat all patients...
We aim to treat all patients...
We aim to treat all patients...

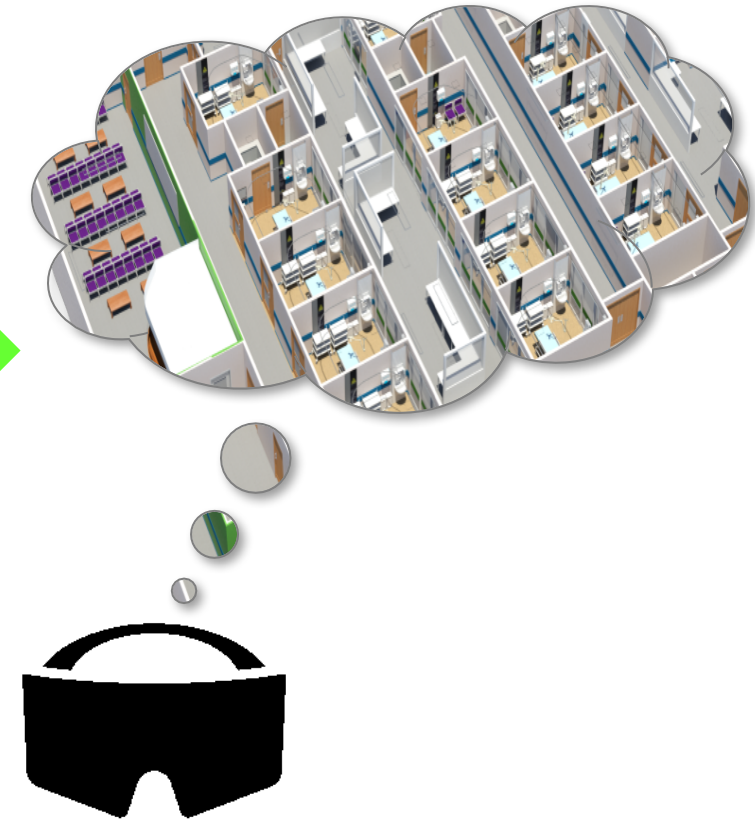
The Resuscitation unit is for people who have a serious injury or illness that requires immediate treatment. You may be transferred to further treatment.



Emergency Dept - Chair Cenric



Showcasing Repeatable Rooms: Evolution



P22 VR Hospital Prototype

Level 5 Future Plantroom

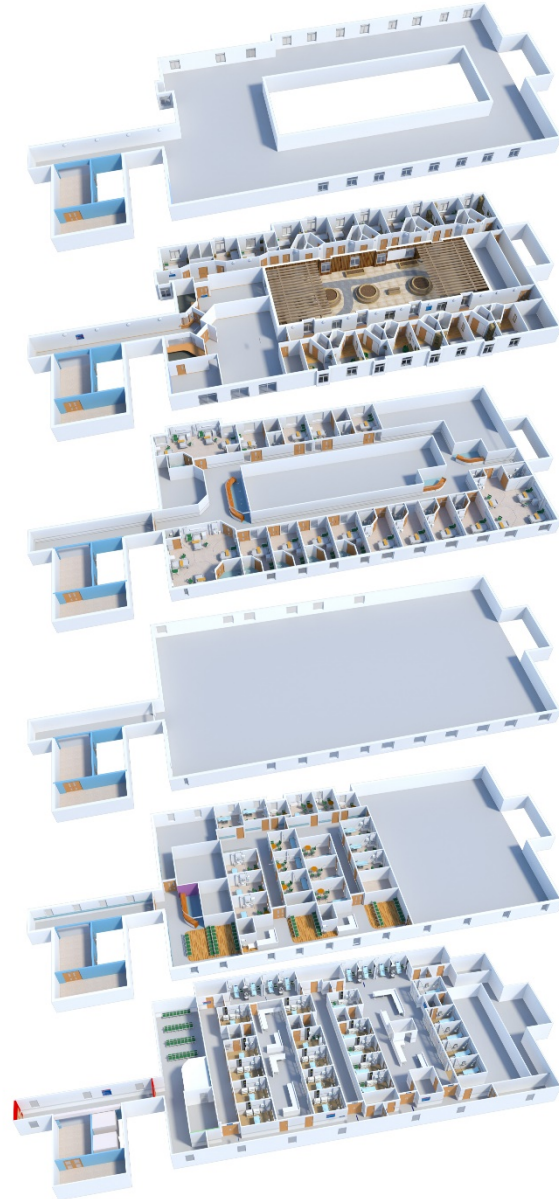
Level 4 Mental Health Ward

Level 3 Acute Inpatient Ward

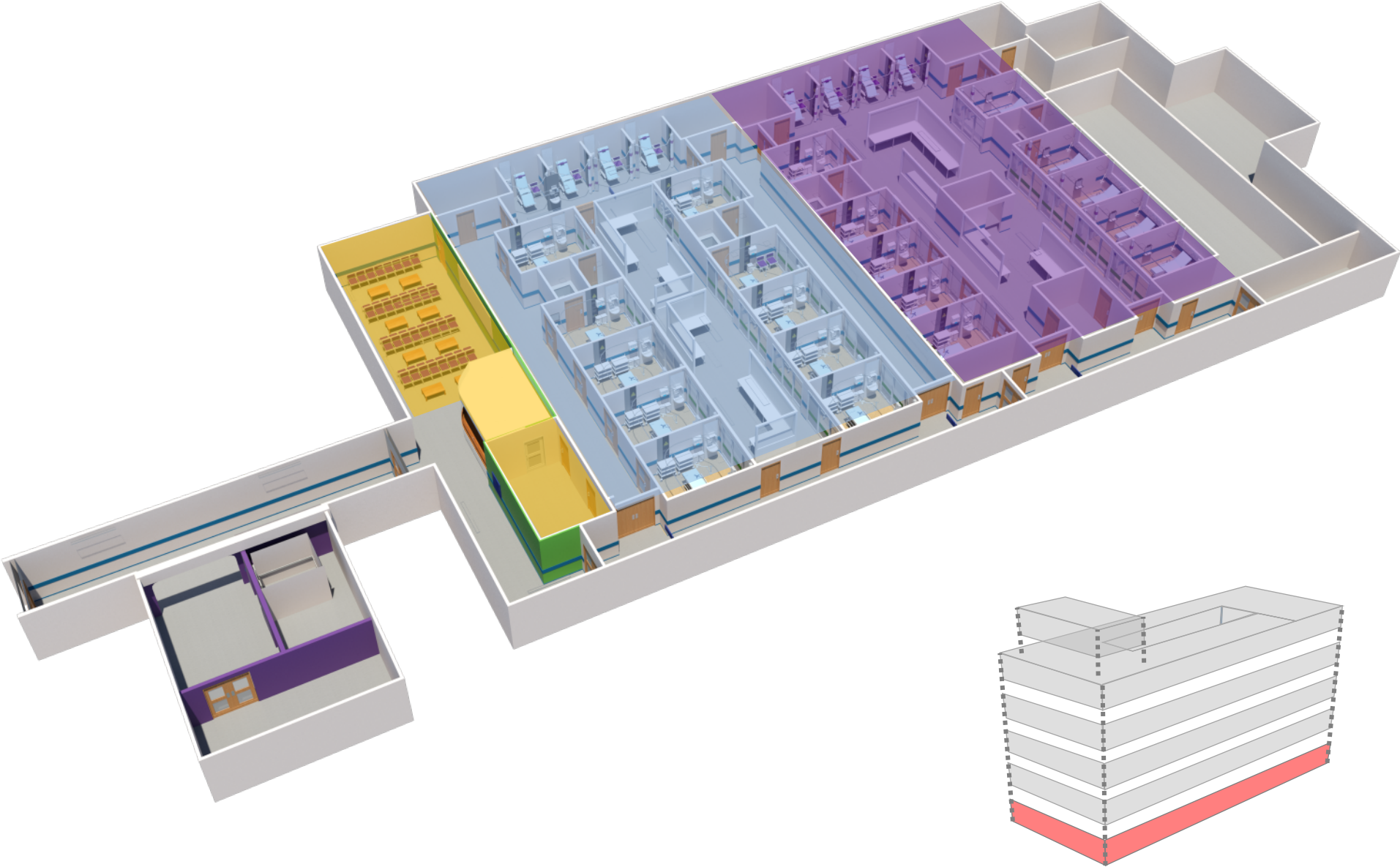
Level 2 Future Hot Floor

Level 1 Outpatients

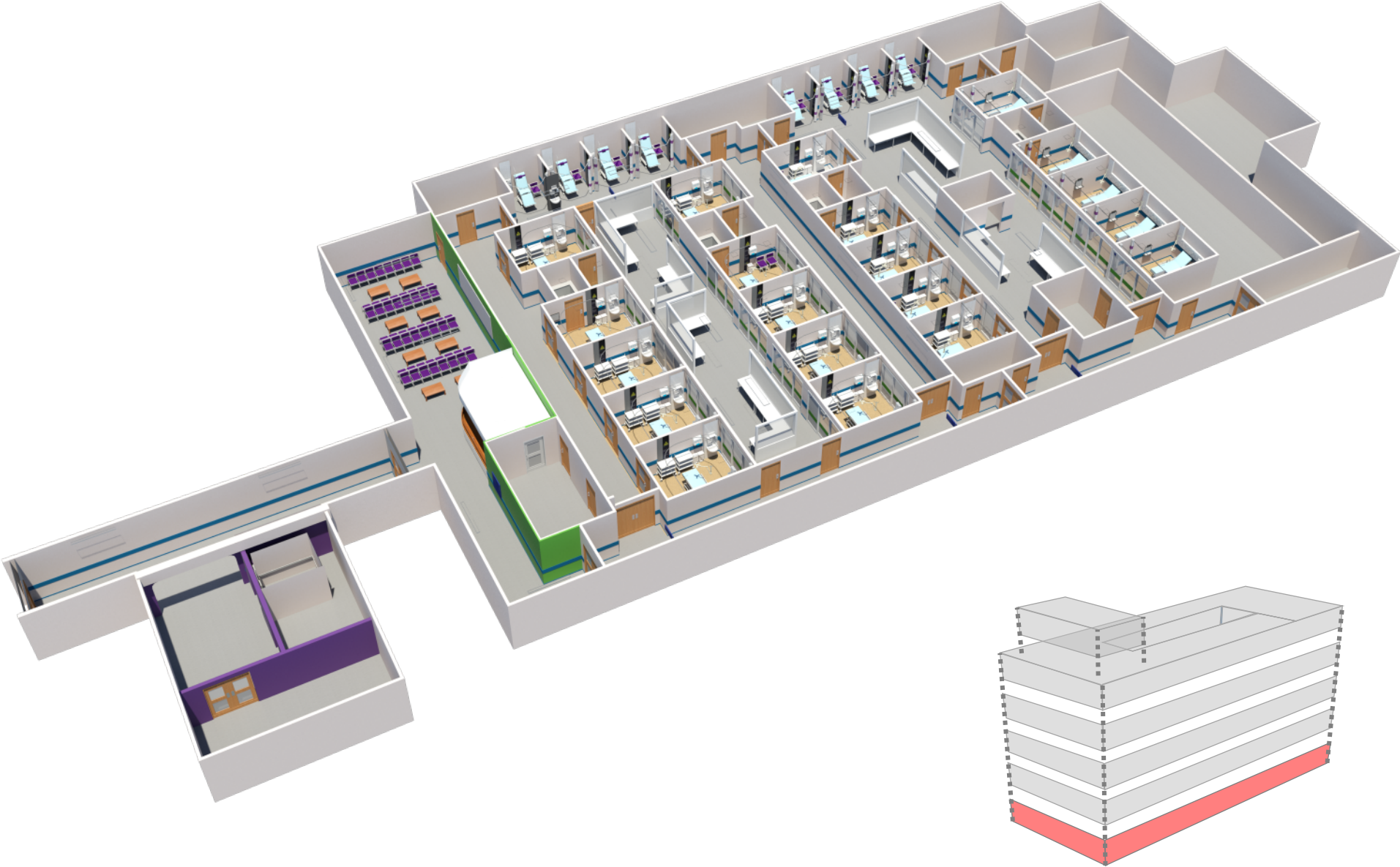
Level 0 ED



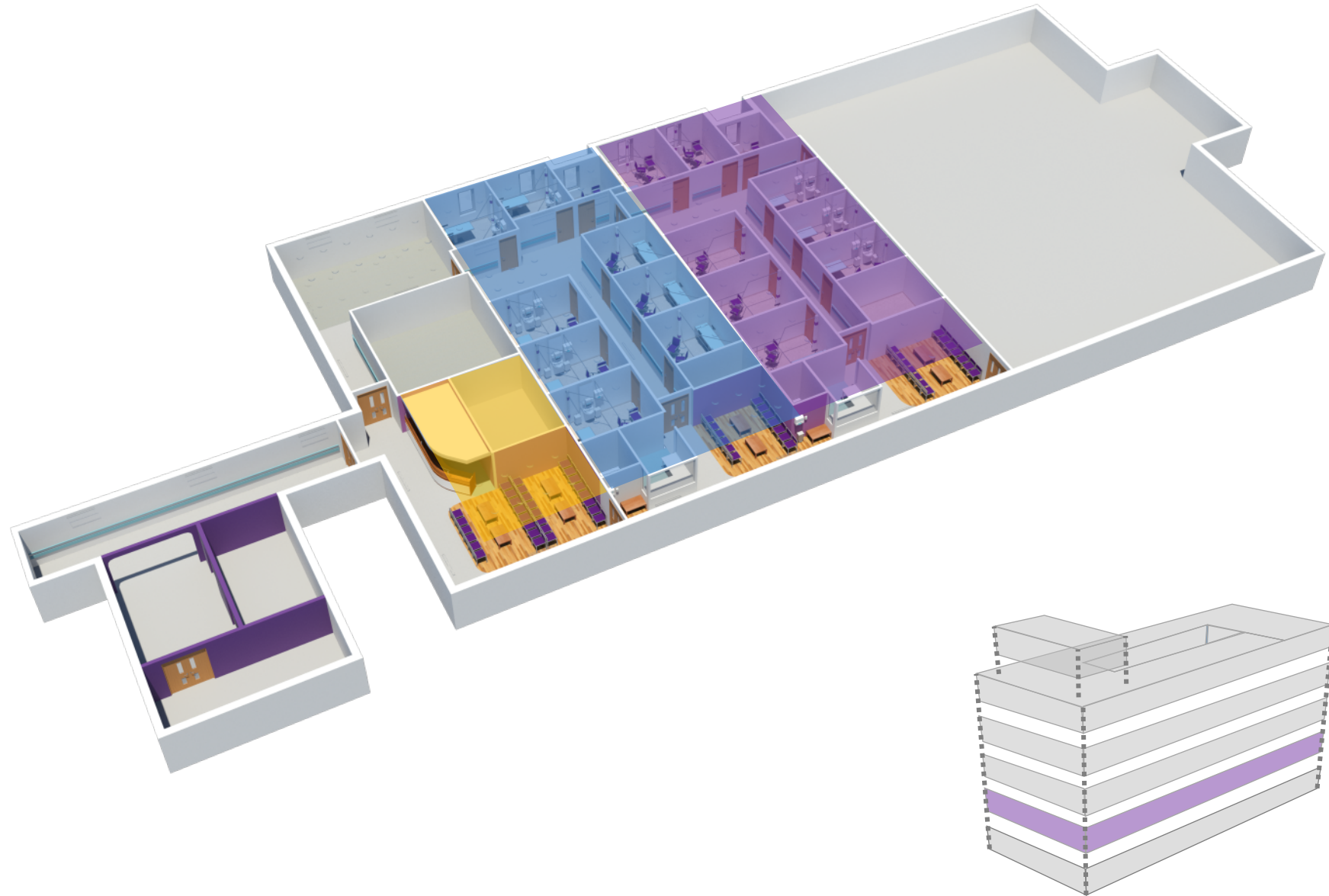
Level 0 Emergency Department Repeatabile Rooms



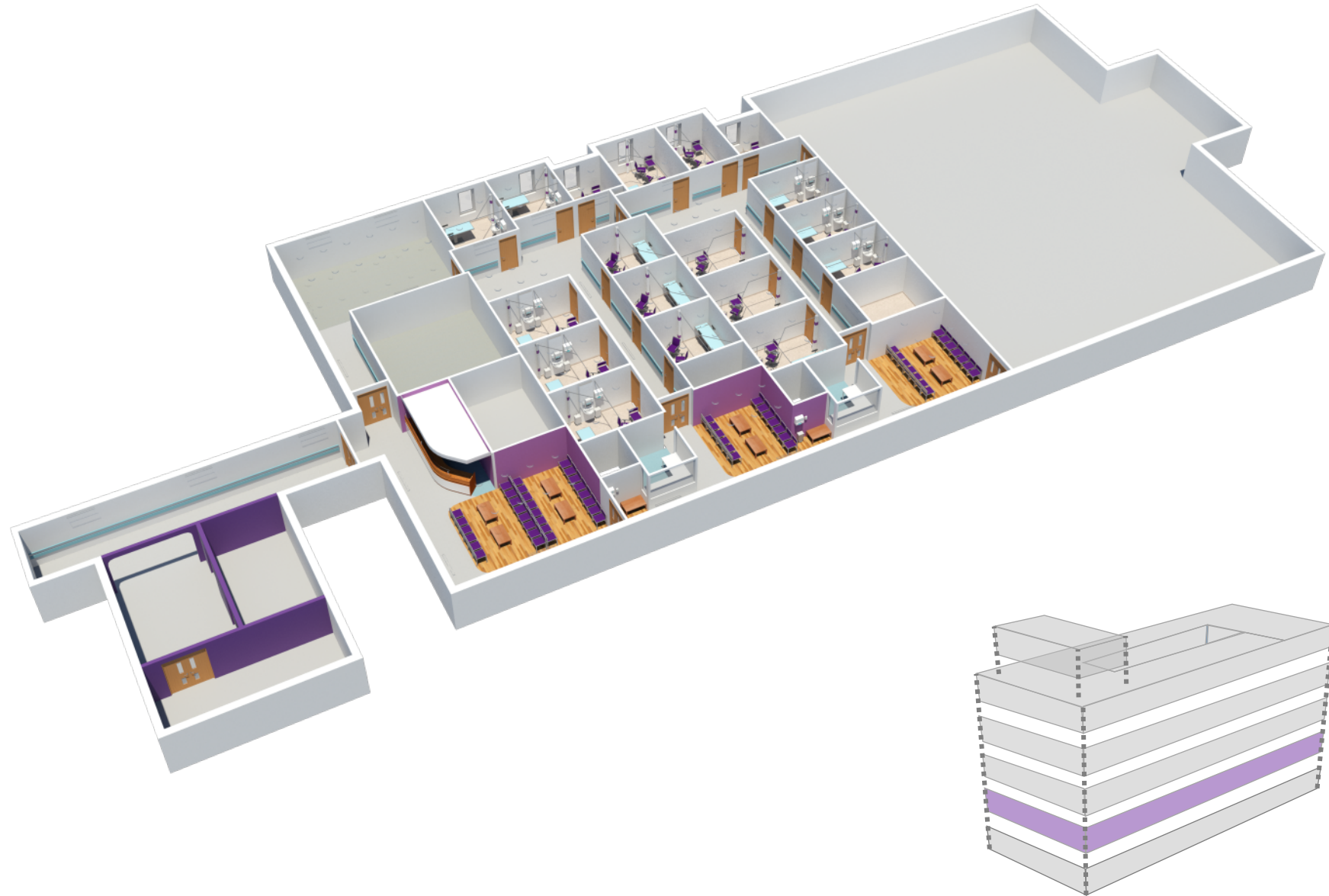
Level 0 Emergency Department Repeatabile Rooms



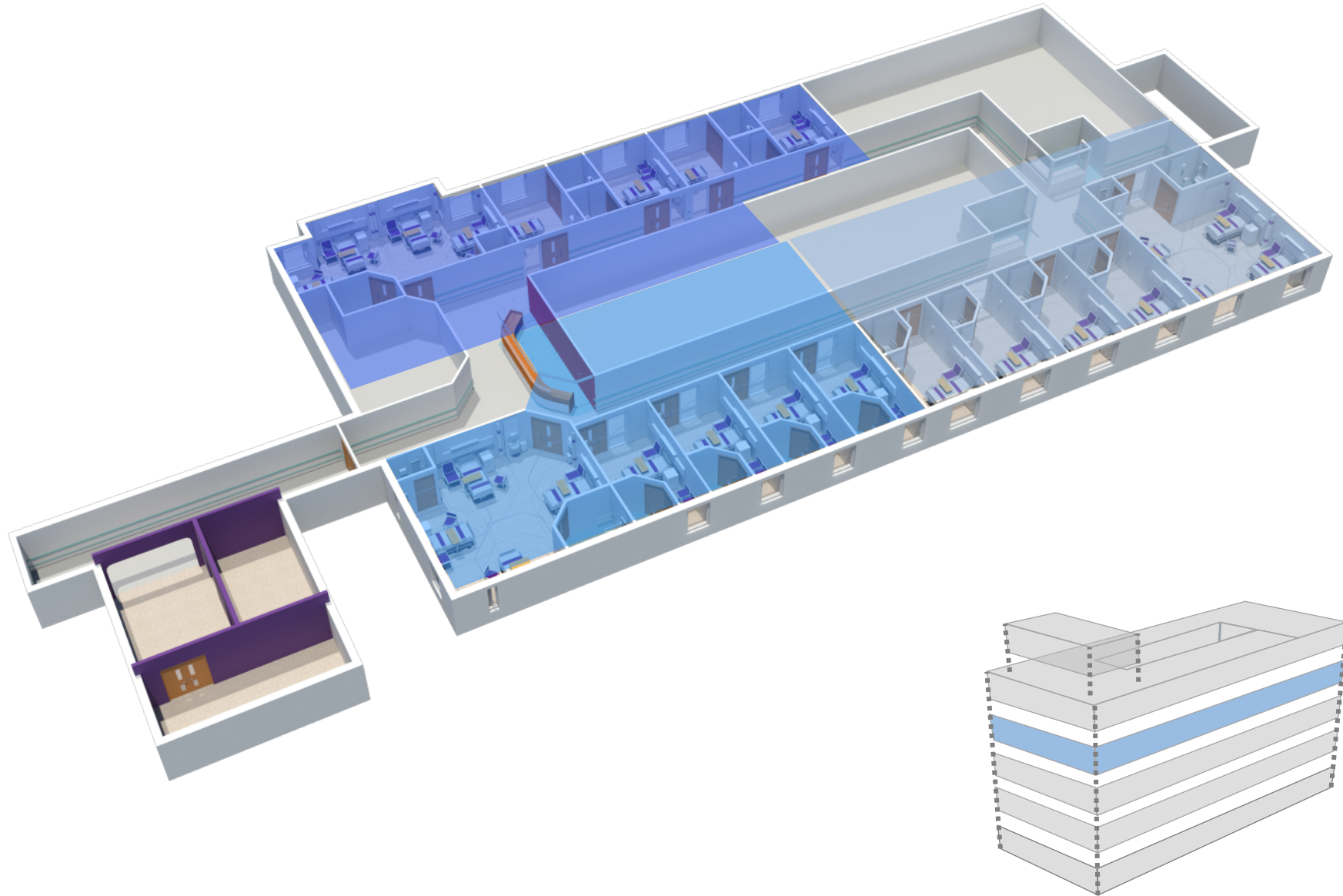
Level 1 Outpatient Department Repeatabe Rooms



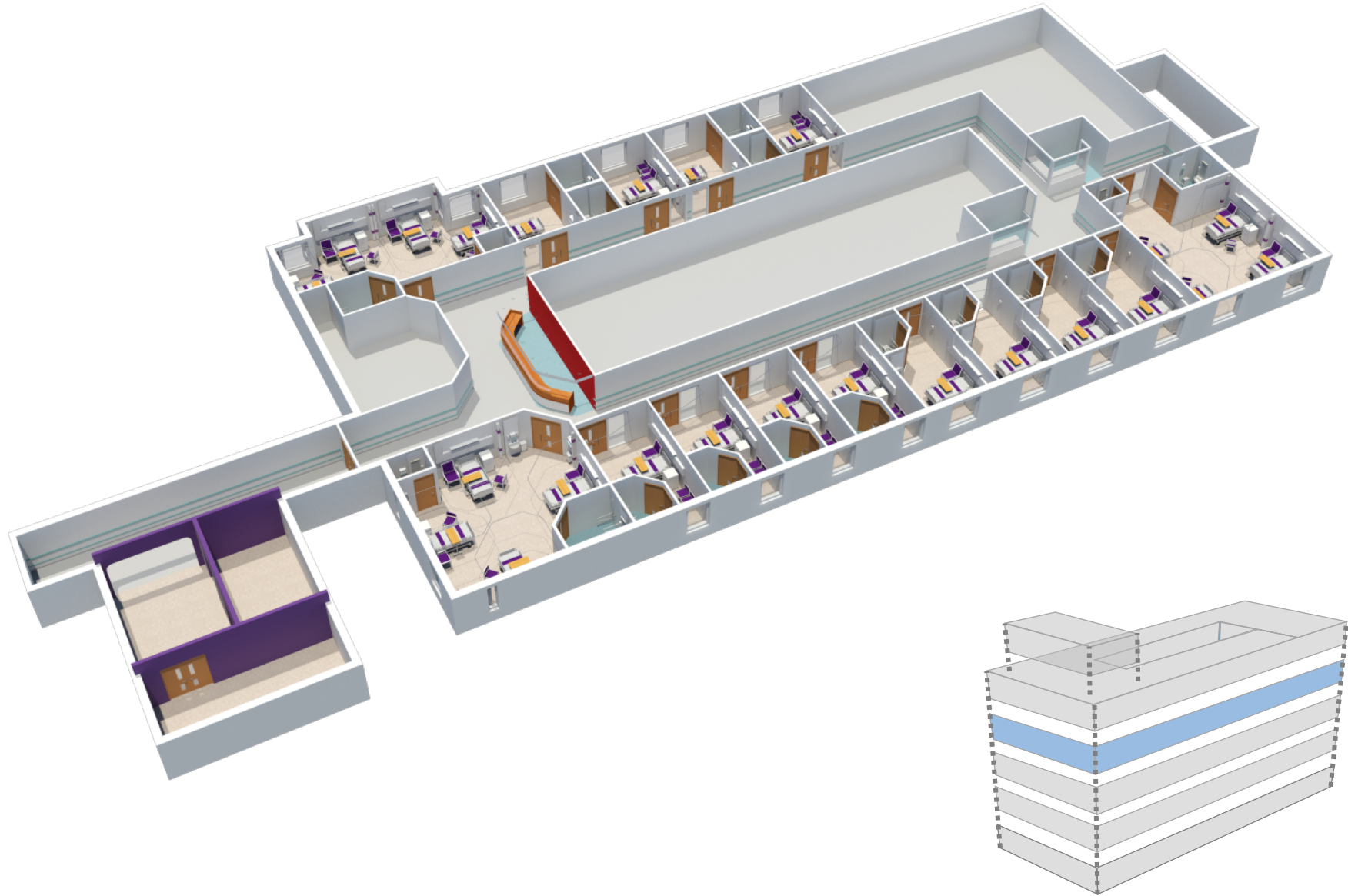
Level 1 Outpatient Department Repeatabe Rooms



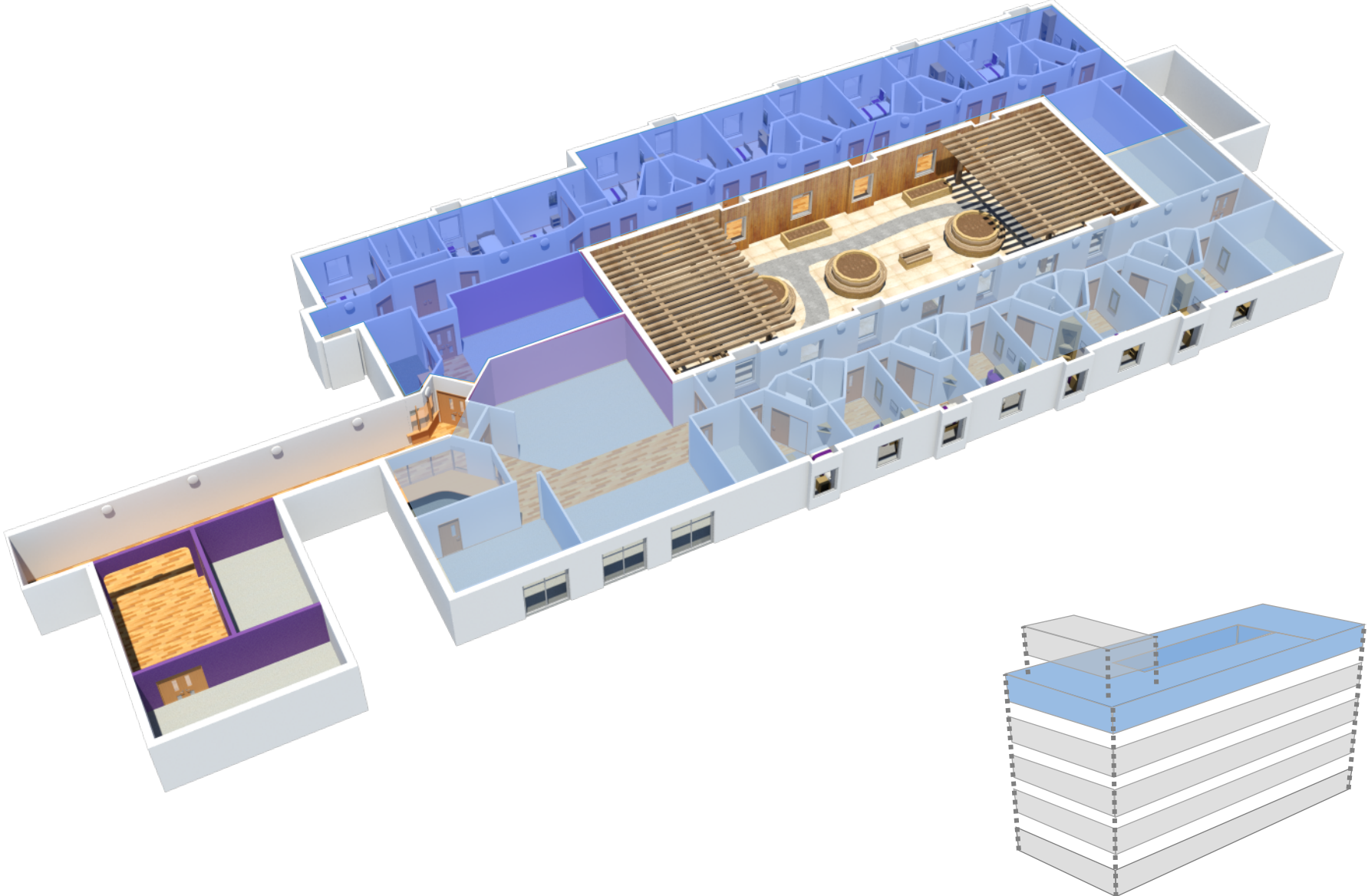
Level 3 Acute In-patient Ward Repeatabile Rooms



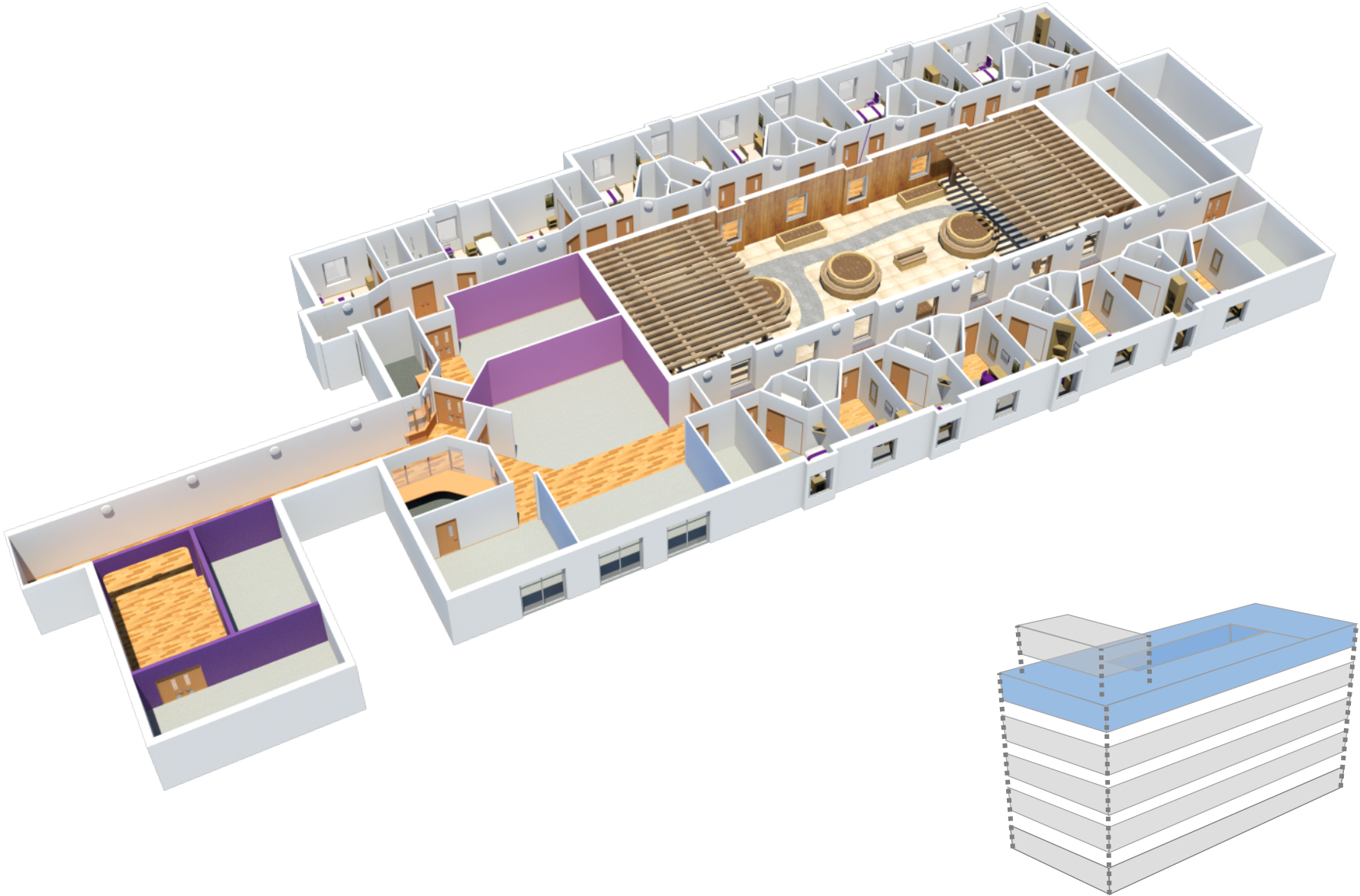
Level 3 Acute In-patient Ward Repeatable Rooms



Level 4 Mental Health In-patient Ward Repeatable Rooms



Level 4 Mental Health In-patient Ward Repeatable Rooms



Live demo.....

Thank You

