

Towards a Future Hospital



Facilitating New Models of Care Through A Collaborative Built Environment



Introductions

Towards a Future Hospital



Chris Thornton
Architect

Director + Health Sector
Lead
ADP



Dr Roger Duckitt
Clinician

Consultant Acute
Physician
Worthing Hospital

- 1. Context**
- 2. Clinical Concept + Vision**
- 3. Existing Building + Constraints**
- 4. Brief + Collaboration**
- 5. Design + Flexibility**
- 6. Positive Space**
- 7. Positive Outcomes + Statistics**

1. Context

Headline Statistics

Context

Accident and
Emergency



Pressure on **A+E** - 'Anything + Everything'
4 hour target and financial challenges



Elderly population on the rise and
specifically those with complex care needs



Bed **capacity** decreasing but 5.5% - 6.5% increase
in **admissions** per year across the NHS

2. Clinical Concept + Vision

Aspiration

Clinical Concept + Vision

- » Improve **experience of care** for all patients
- » **Co-location** of admission streams
- » **Reduce** non-elective **admissions**
- » Increase use of **Ambulatory Care**
- » Improve flow
- » Reduce **length of stay**
- » Enhance **multi-disciplinary** input
- » Develop high quality **learning environment**



People Inspired

3. Existing Building + Constraints

Worthing Hospital

Existing Building + Constraints



People Inspired

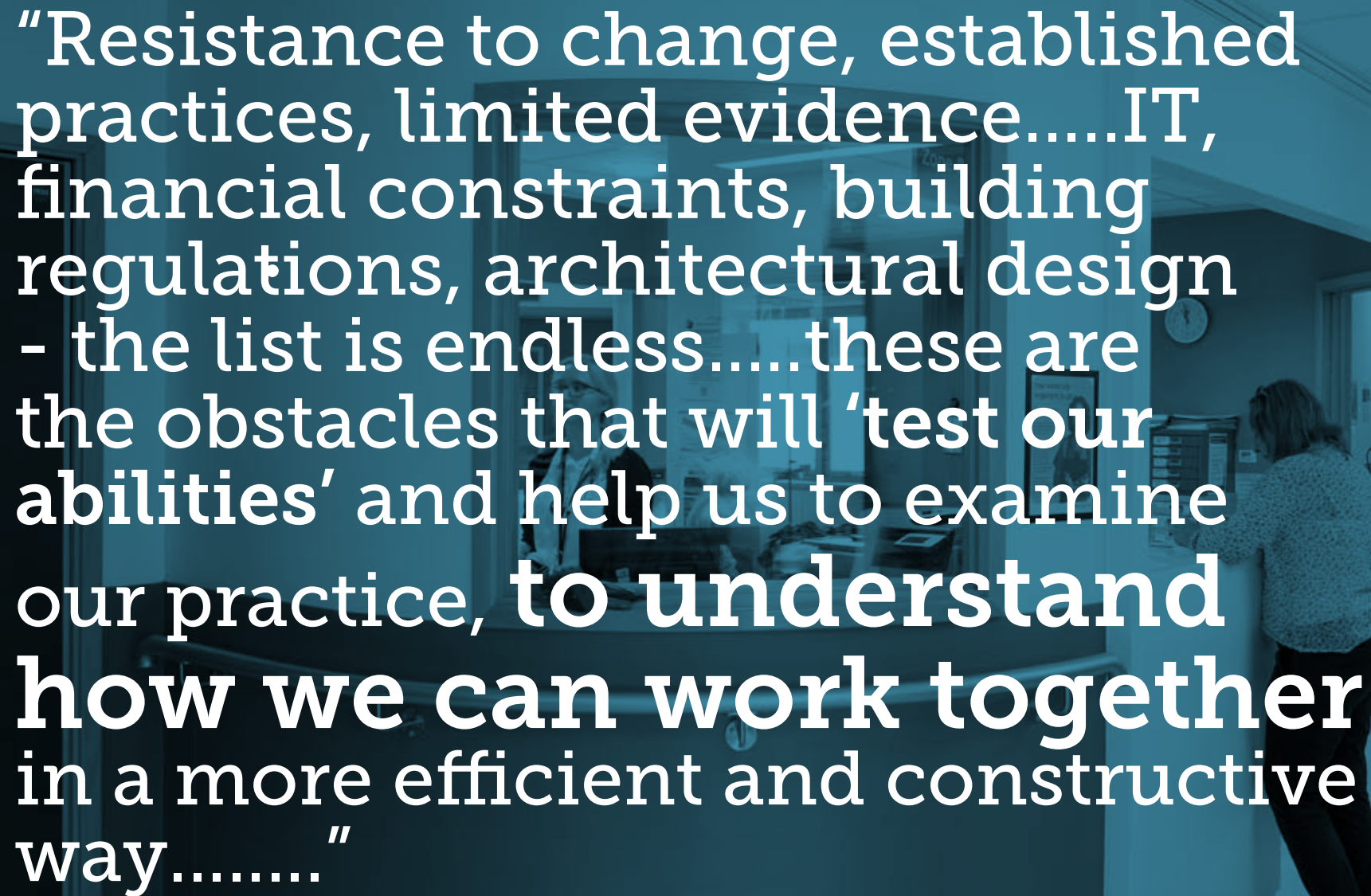
Nucleus Template

Existing Building + Constraints



4. Brief + Collaboration





“Resistance to change, established practices, limited evidence.....IT, financial constraints, building regulations, architectural design - the list is endless.....these are the obstacles that will ‘test our abilities’ and help us to examine our practice, **to understand how we can work together** in a more efficient and constructive way.....”

Dr Roger Duckitt,
Lead Clinician, Worthing Emergency Floor



People Inspired

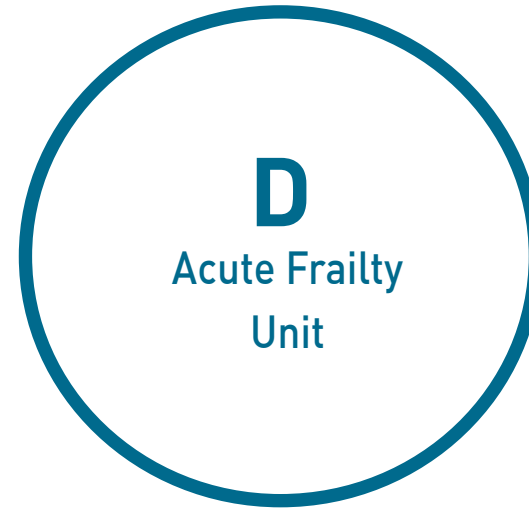
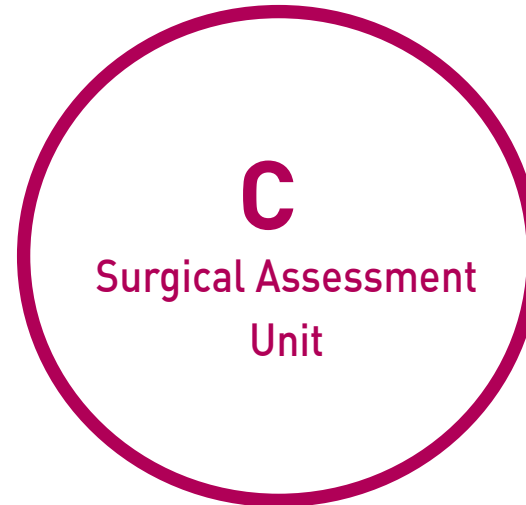
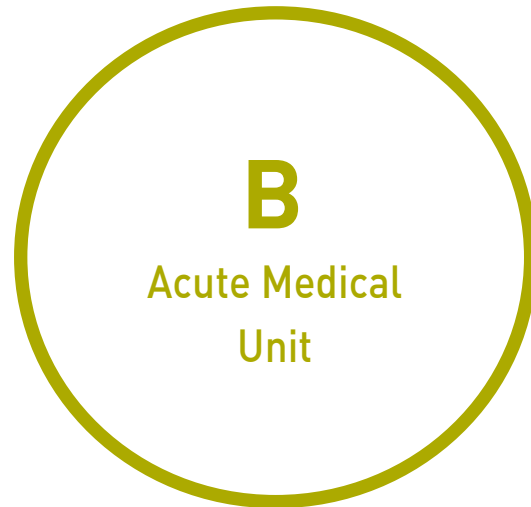


".....to achieve what we
all strive for - **the best
outcome for our
patients**"

Dr Roger Duckitt
Lead Clinician, Worthing Emergency Floor

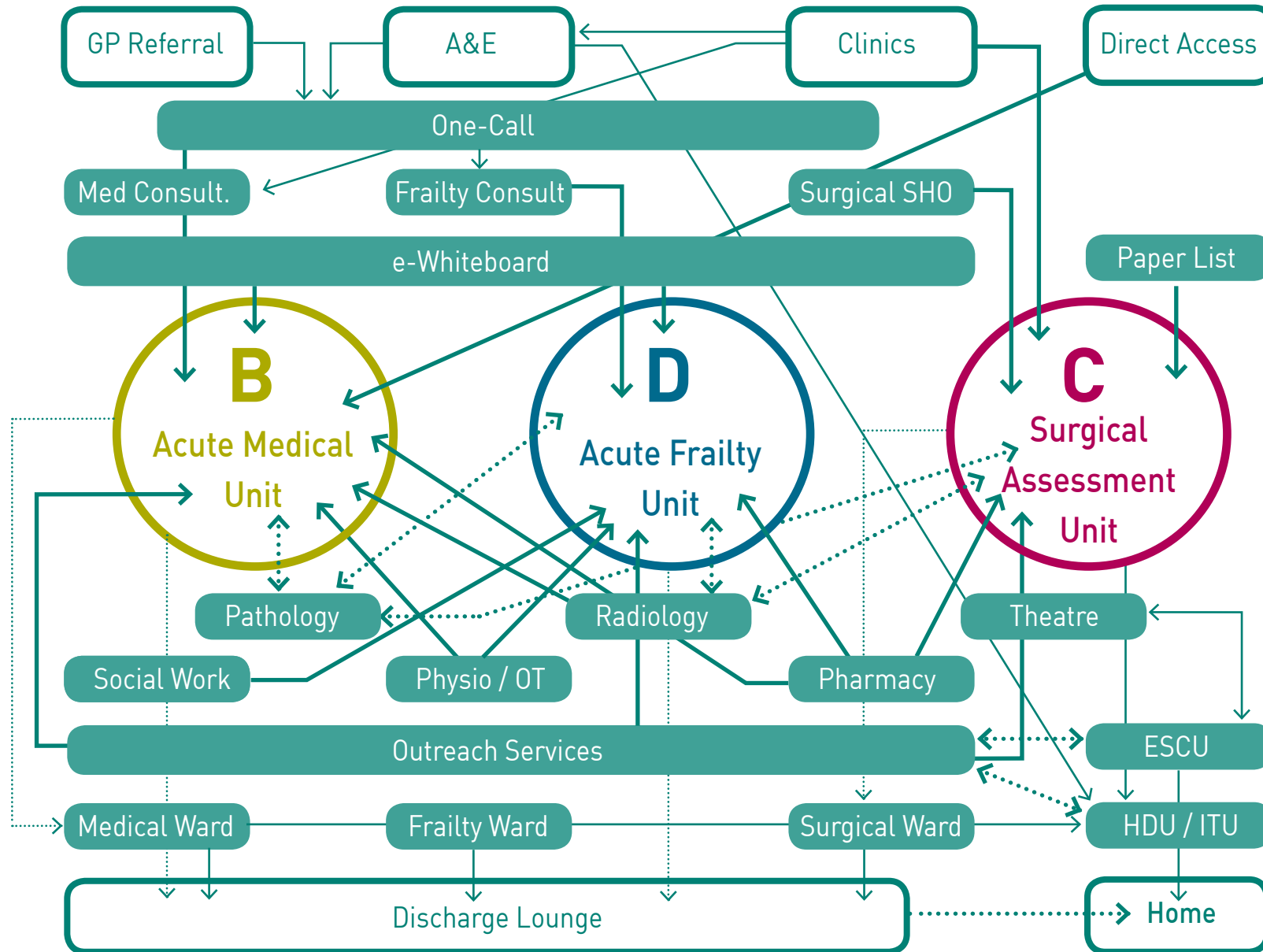
Separate Departments

Design + Flexibility



Complex Patient Pathway

Design + Flexibility



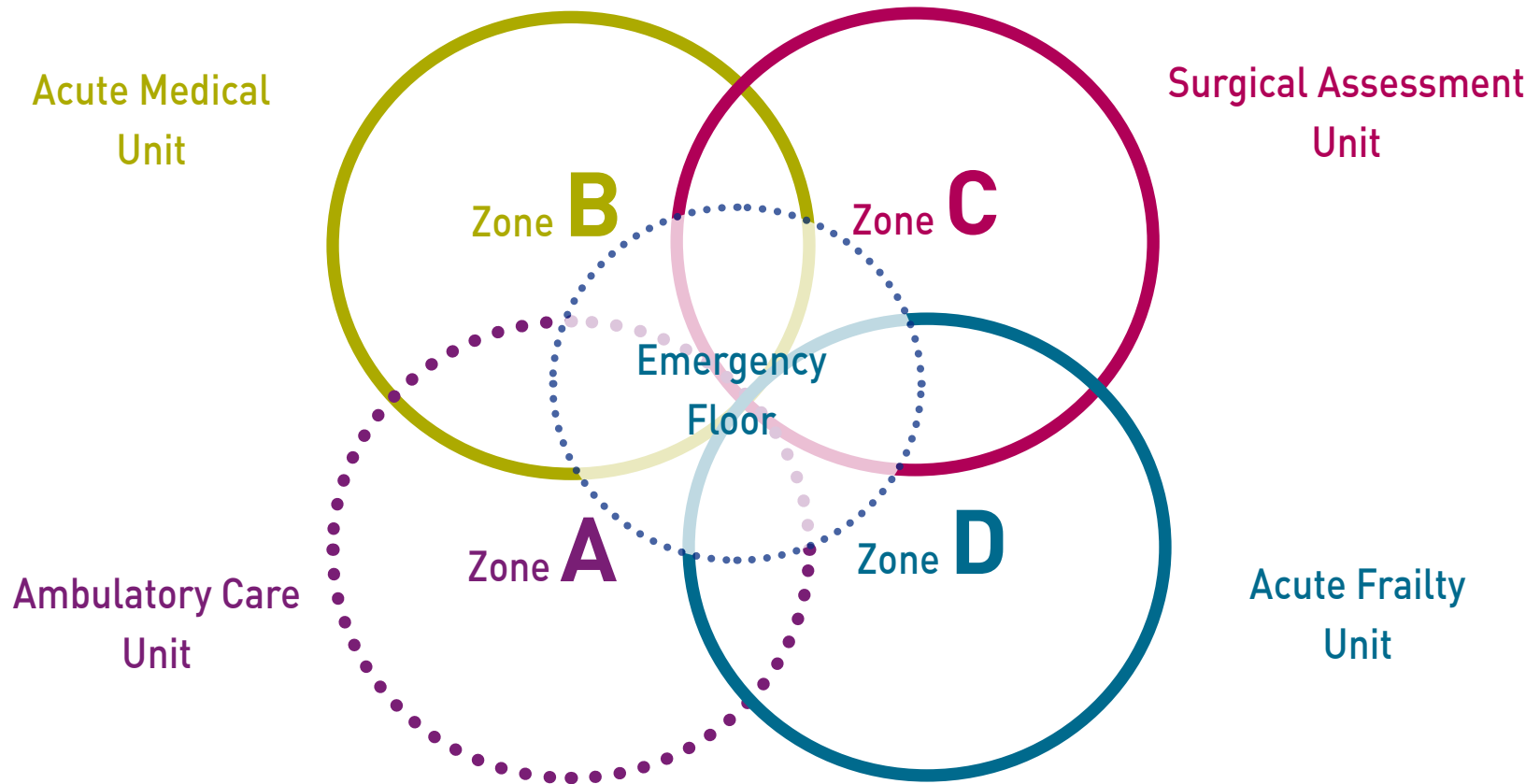


How to create capacity in a tight system...?

5. Design + Flexibility

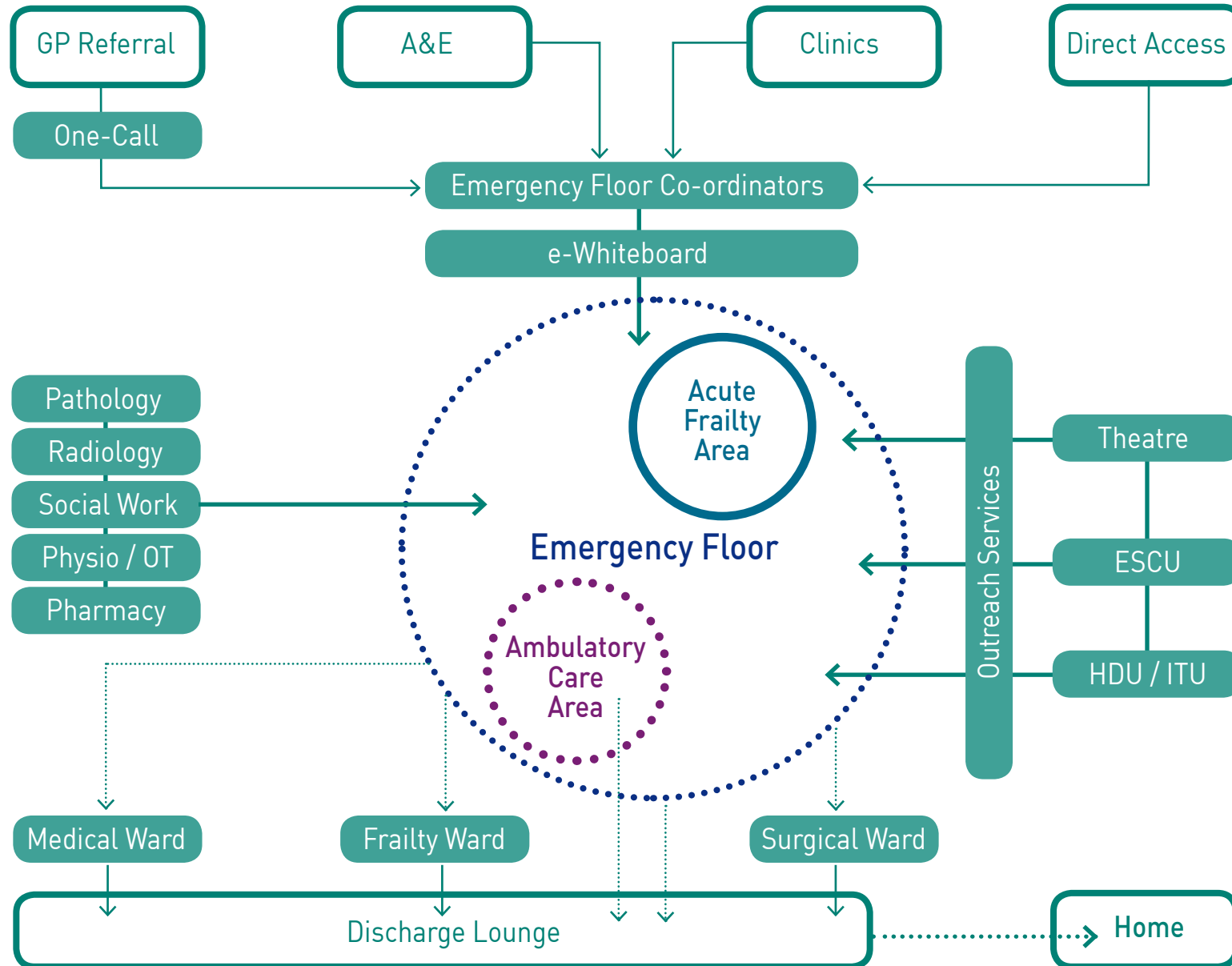
Zoned Single Department

Design + Flexibility



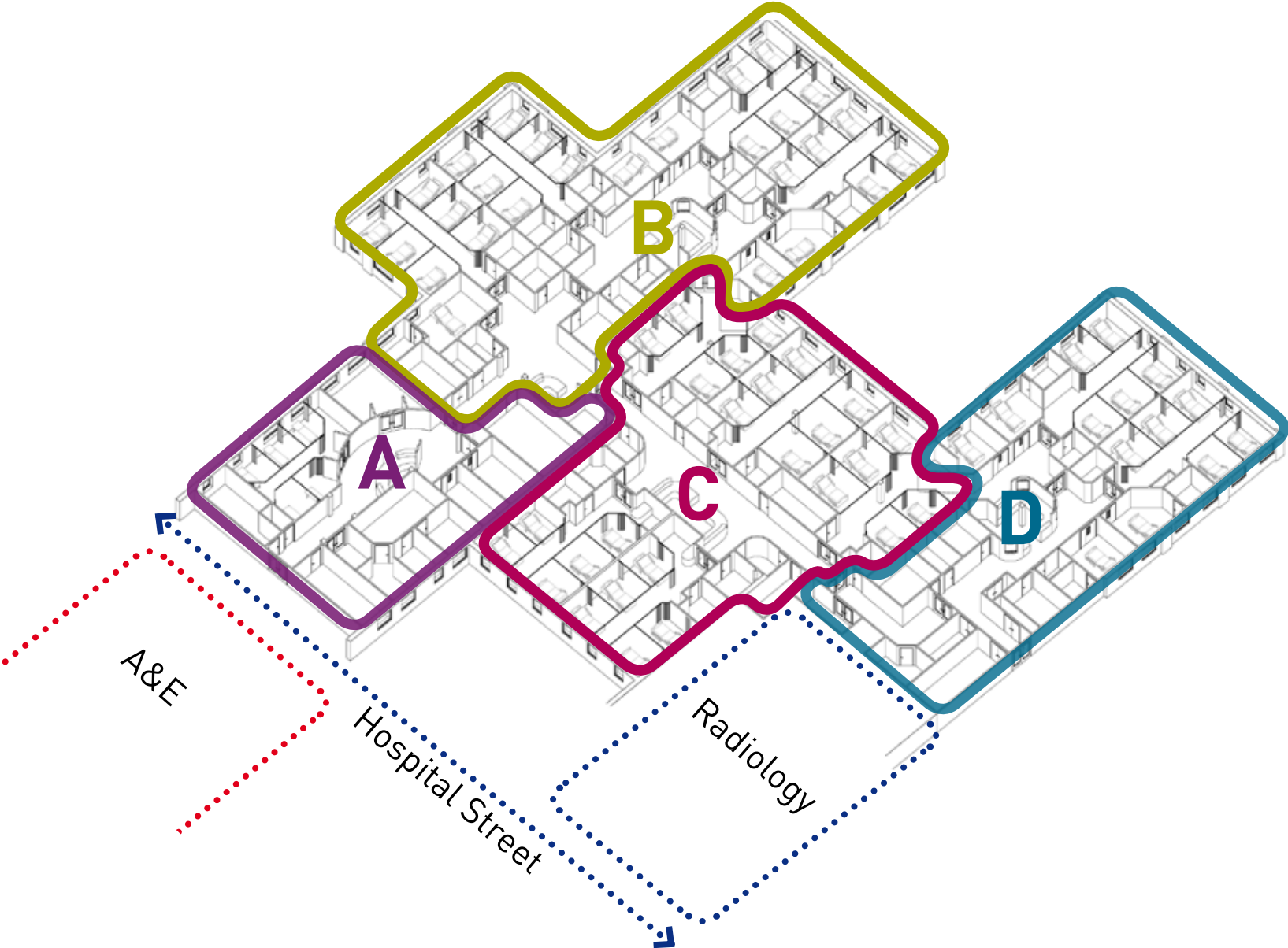
Emergency Floor Patient Pathway

Existing Building + Constraints



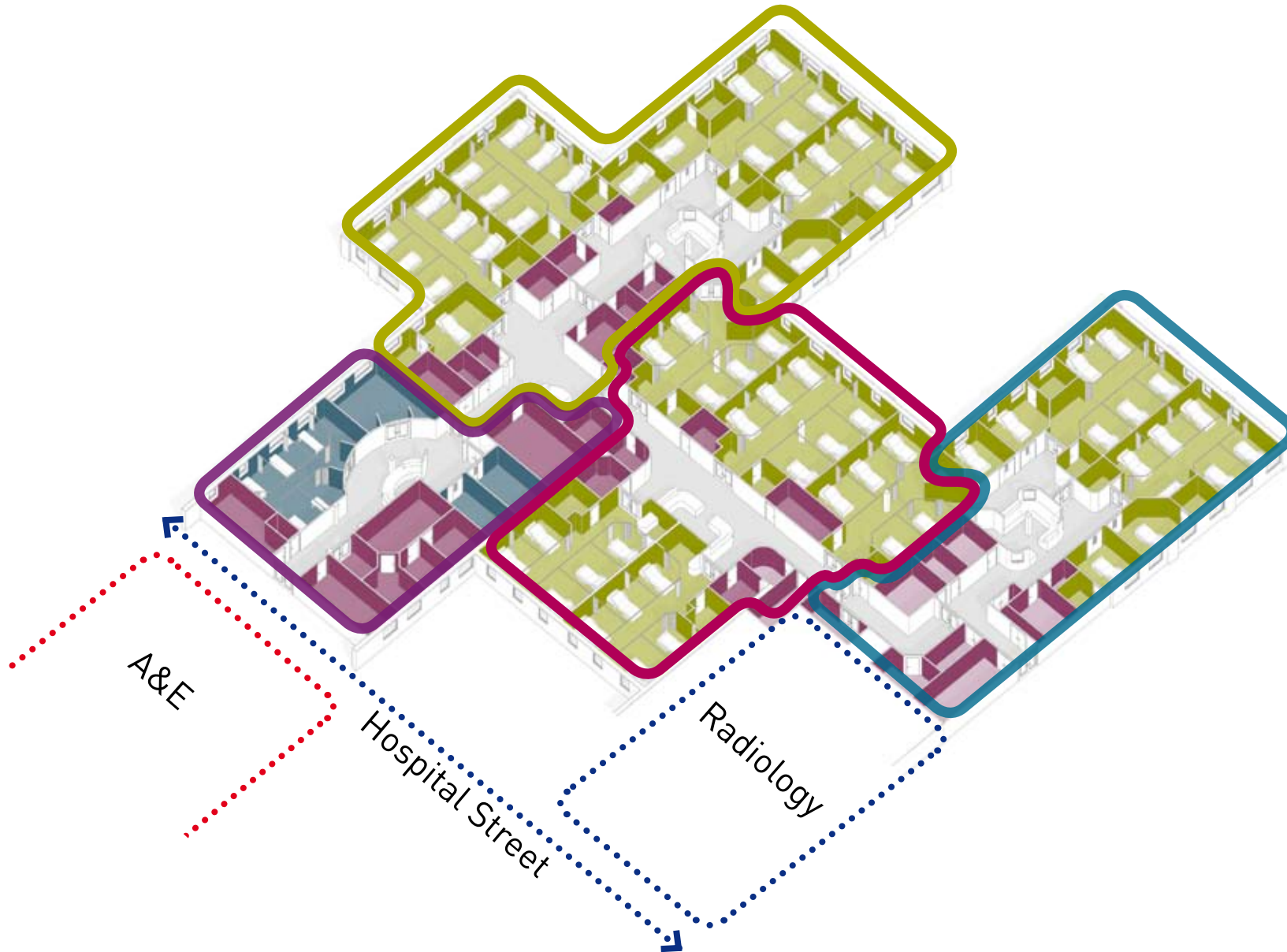
Emergency Floor

Design + Flexibility



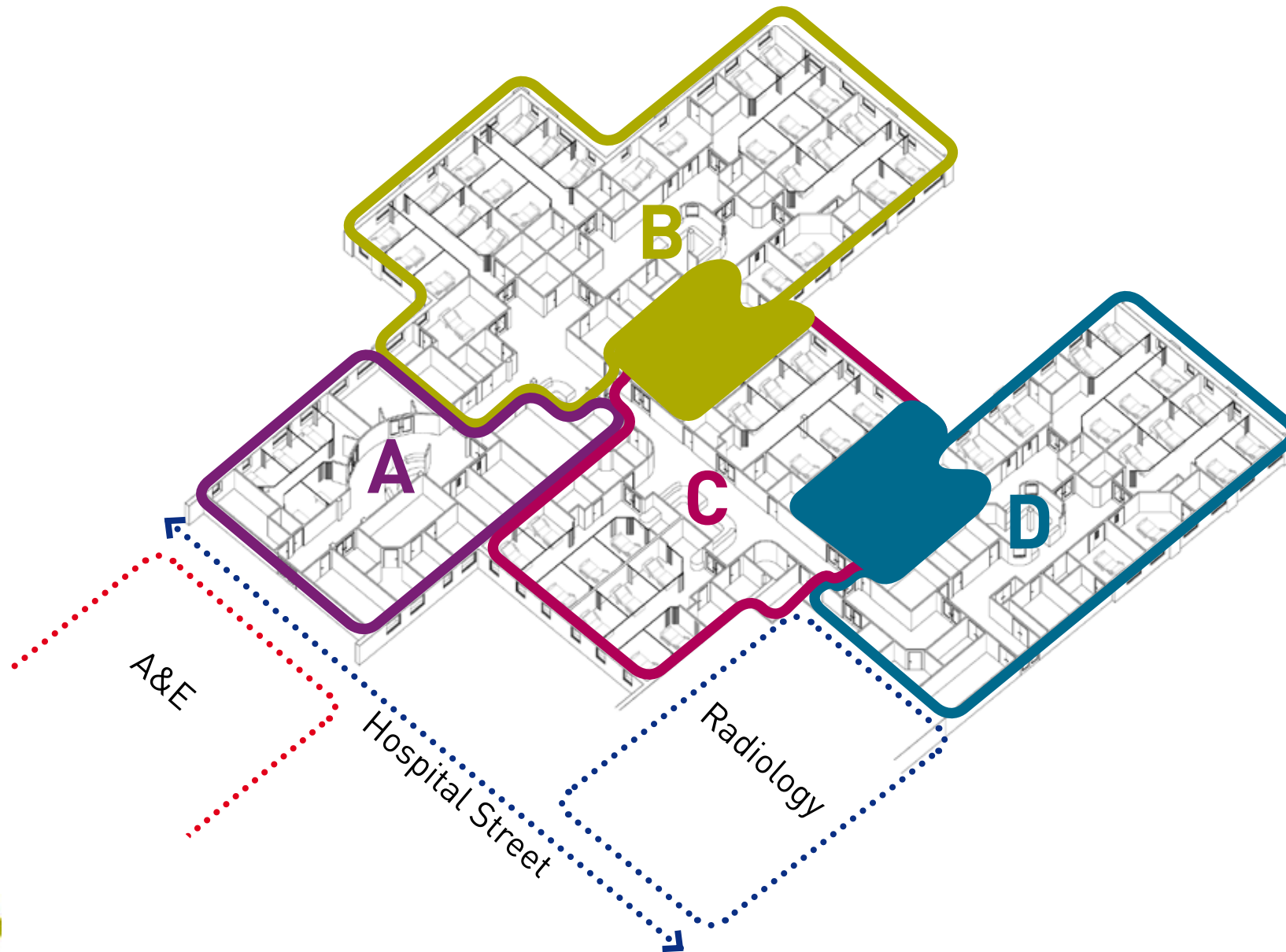
Emergency Floor

Design + Flexibility



Adaptable Zones

Design + Flexibility



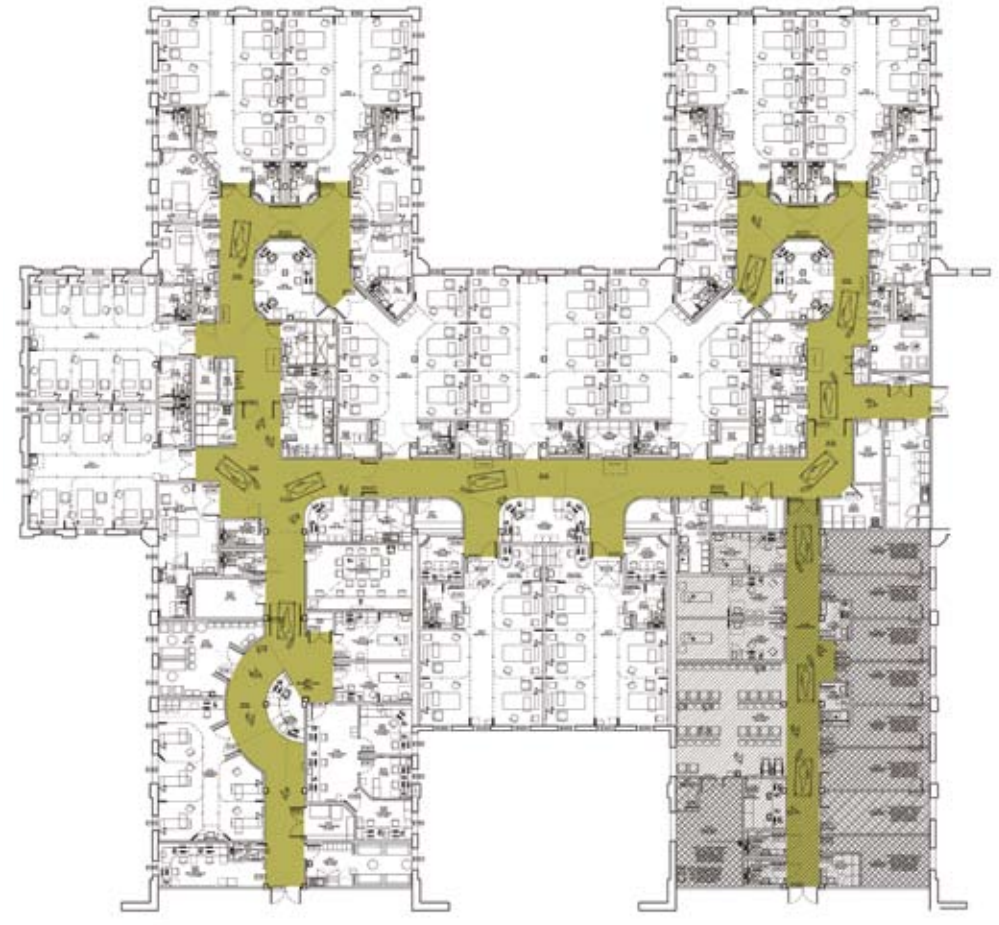
6. Positive Space

Flow + Efficiency

Positive Space



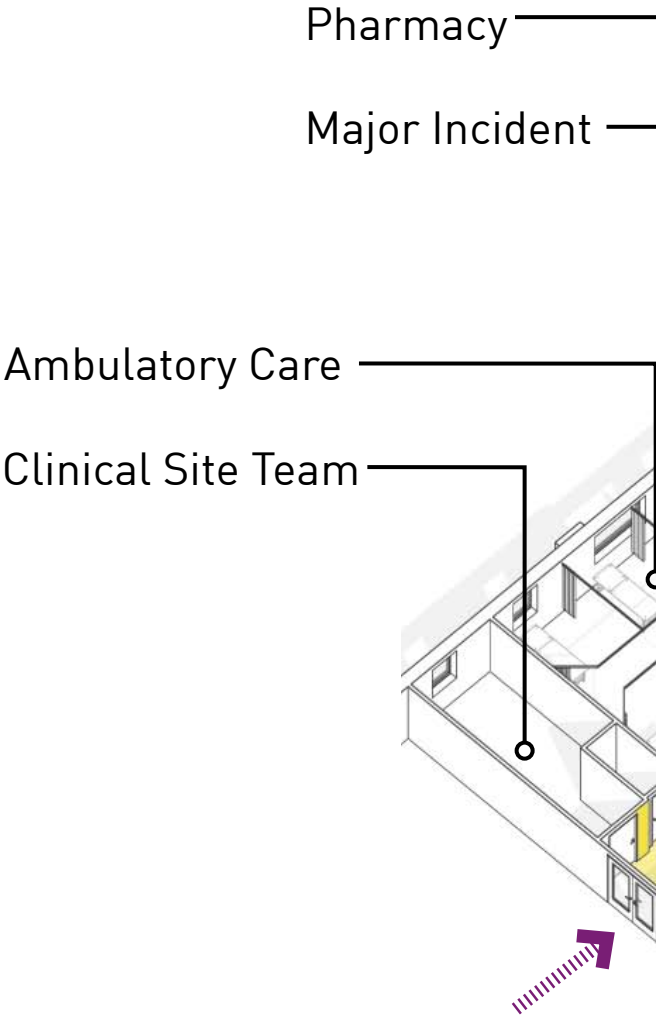
Existing



Proposed

Nodes

Positive Space



Ambulatory Care

Positive Space



Pharmacy

Positive Space



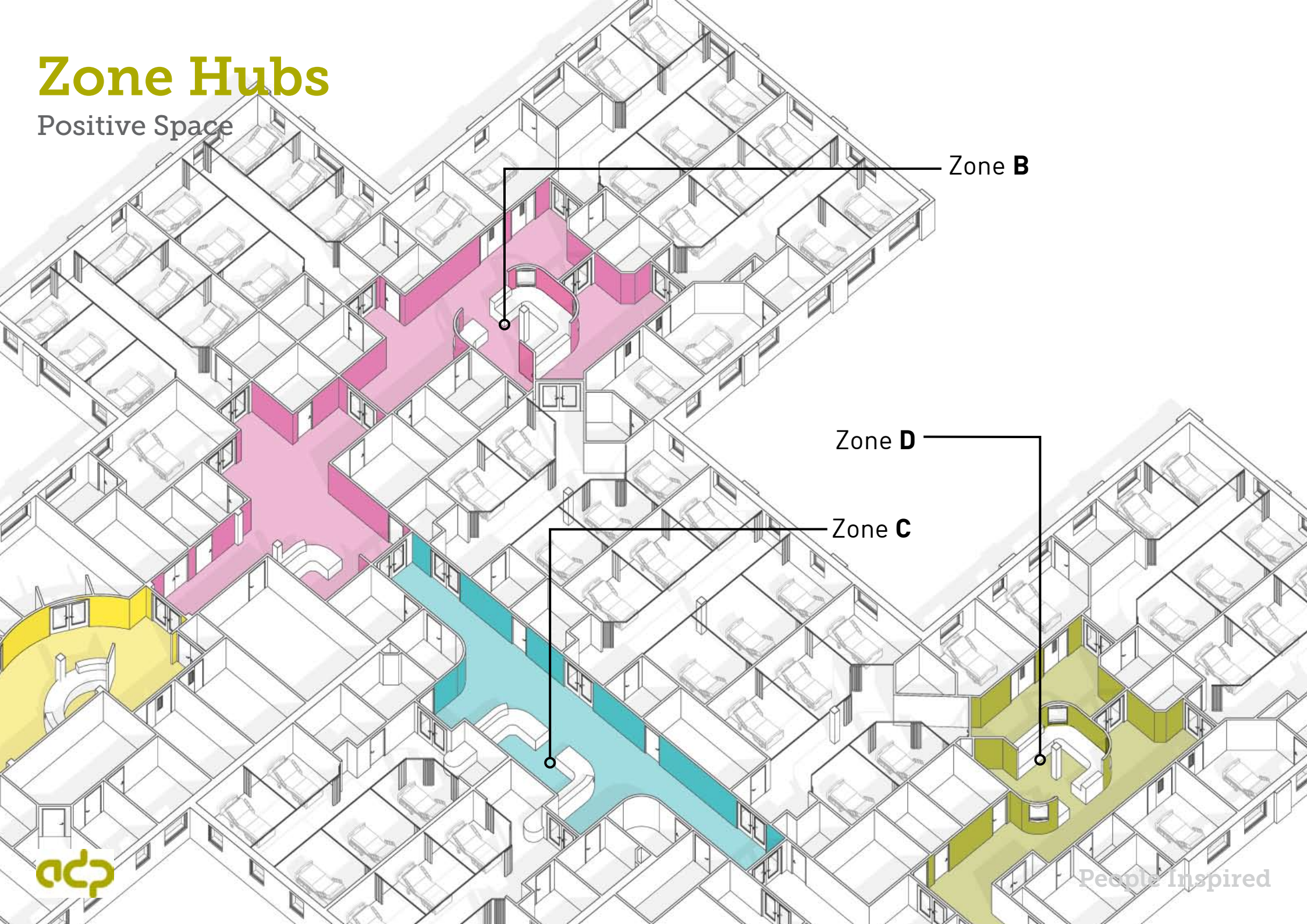
Multi Disciplinary

Positive Space



Zone Hubs

Positive Space



Zone B

Zone D

Zone C

Zone Hubs

Positive Space



Zone Hubs

Positive Space



Zone Hubs

Positive Space



7. Positive Outcomes + Statistics



3 Years On

Positive Outcomes + Statistics

- » **Future Hospital** pilot site
- » **Data** gathering
- » **60,000** patients through the department since opening
- » **65 - 85** patients per day



Good for Patient Experience

Positive Outcomes + Statistics



Time to first doctor reduced by 1 hour



23% Reduction in 'outliers' - patients who have been placed on wrong ward as no space on right ward

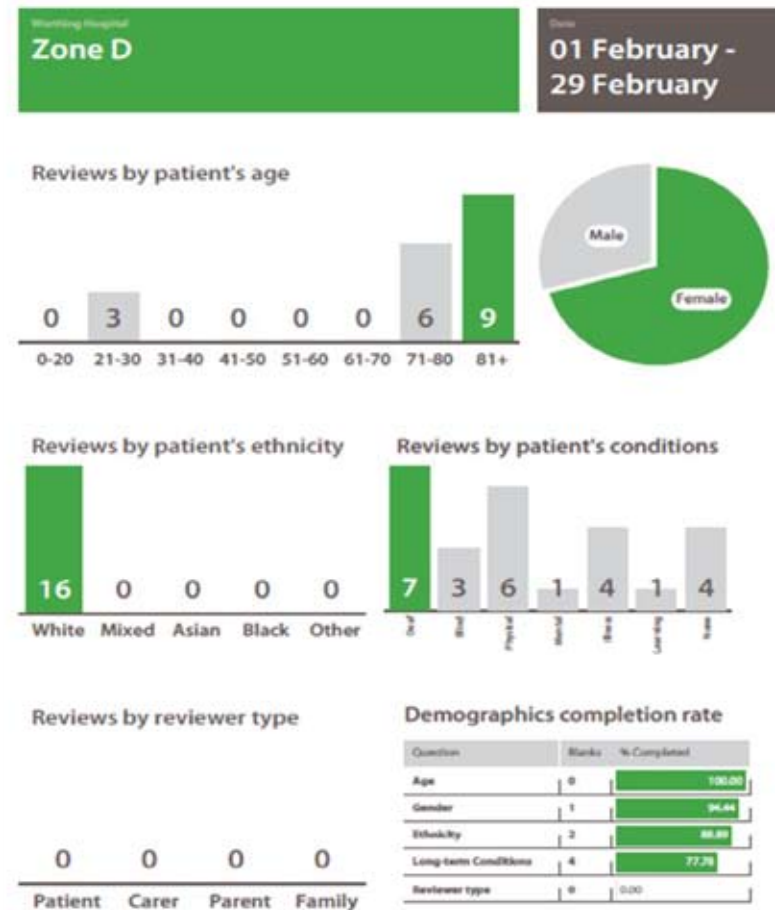
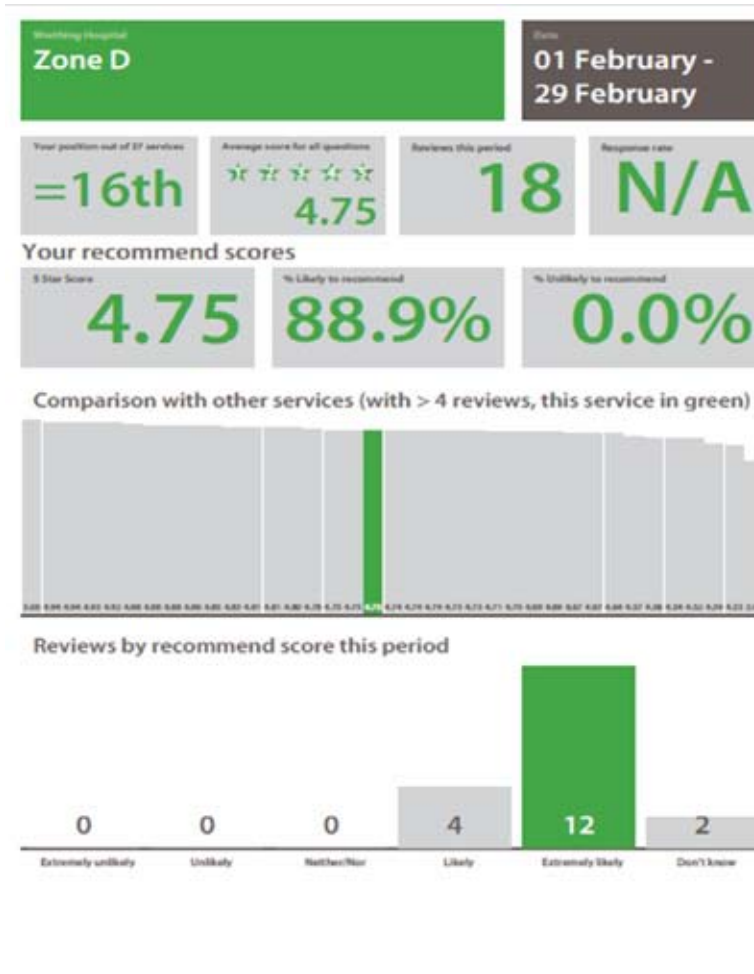


Reduced length of stay:

Medicine @ 31 hours compared to 5 days
Frailty @ 2.1 days compared to 10-12 days

Good for Patient Experience

Positive Outcomes + Statistics



**"It's a really busy unit
but the staff have plenty
of time for you....**

**The stay here has
been excellent, really
excellent. I couldn't fault
it"**

Patient Interview, HSJ Film, May 2017



People Inspired

Good for the Department


Positive Outcomes + Statistics



In top 4 performing Trusts for **A&E waiting times**



Downstream **capacity released** - release of 1 surgical ward



"I originally started working on the Emergency Floor when my mother was treated here. The care she had was so amazing that I wanted to be part of it and it hasn't changed since"

Staff Interview, HSJ Film, May 2017



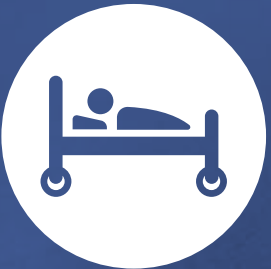
People Inspired

Good for the Trust + NHS

Positive Outcomes + Statistics



Rated as **'Outstanding'** by CQC



18 Bed days per year saved = **£1 million saving** for Trust

Good for the Trust + NHS

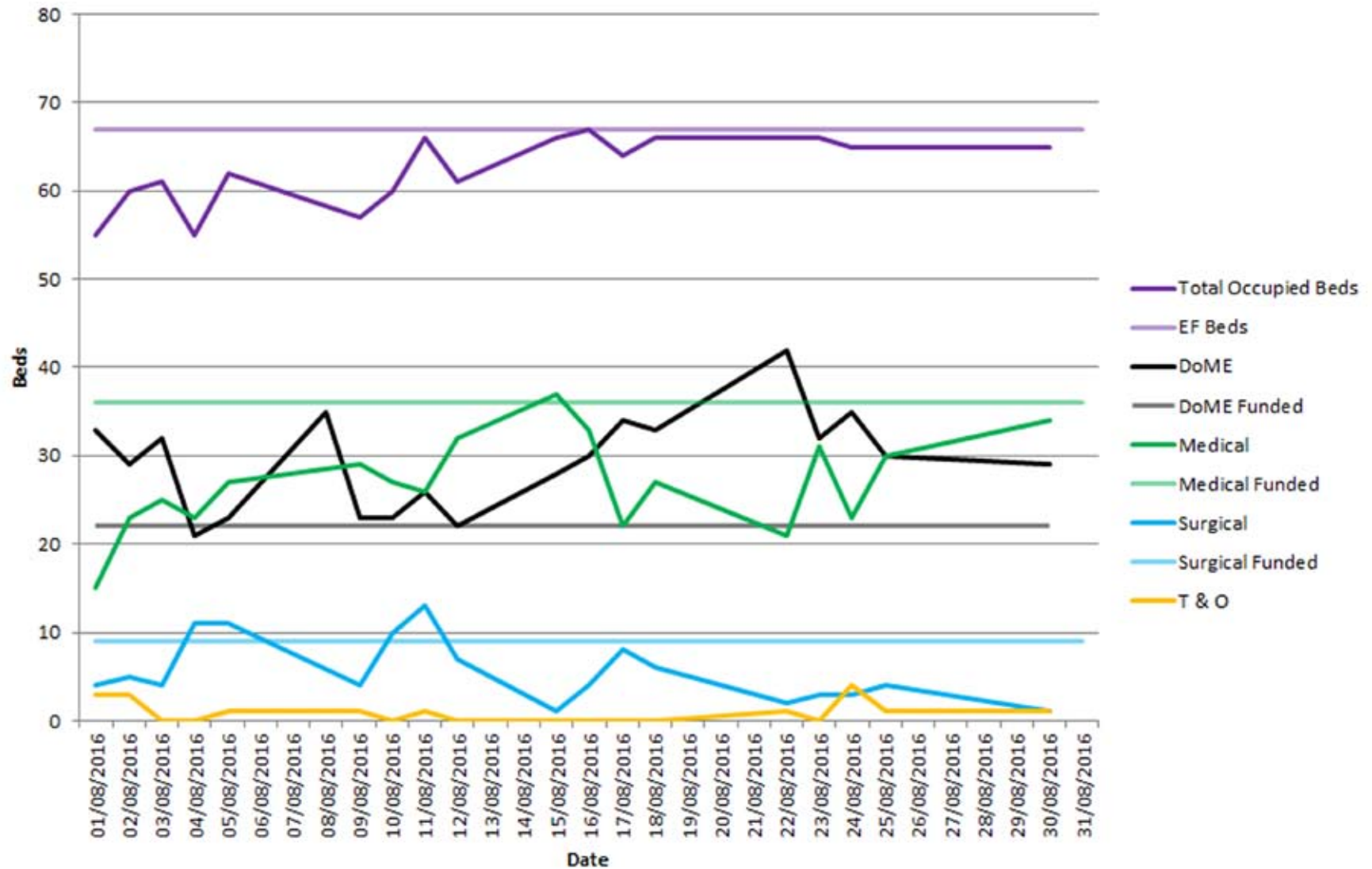
Positive Outcomes + Statistics



Future hospital:
Caring for
medical
patients
People Inspired

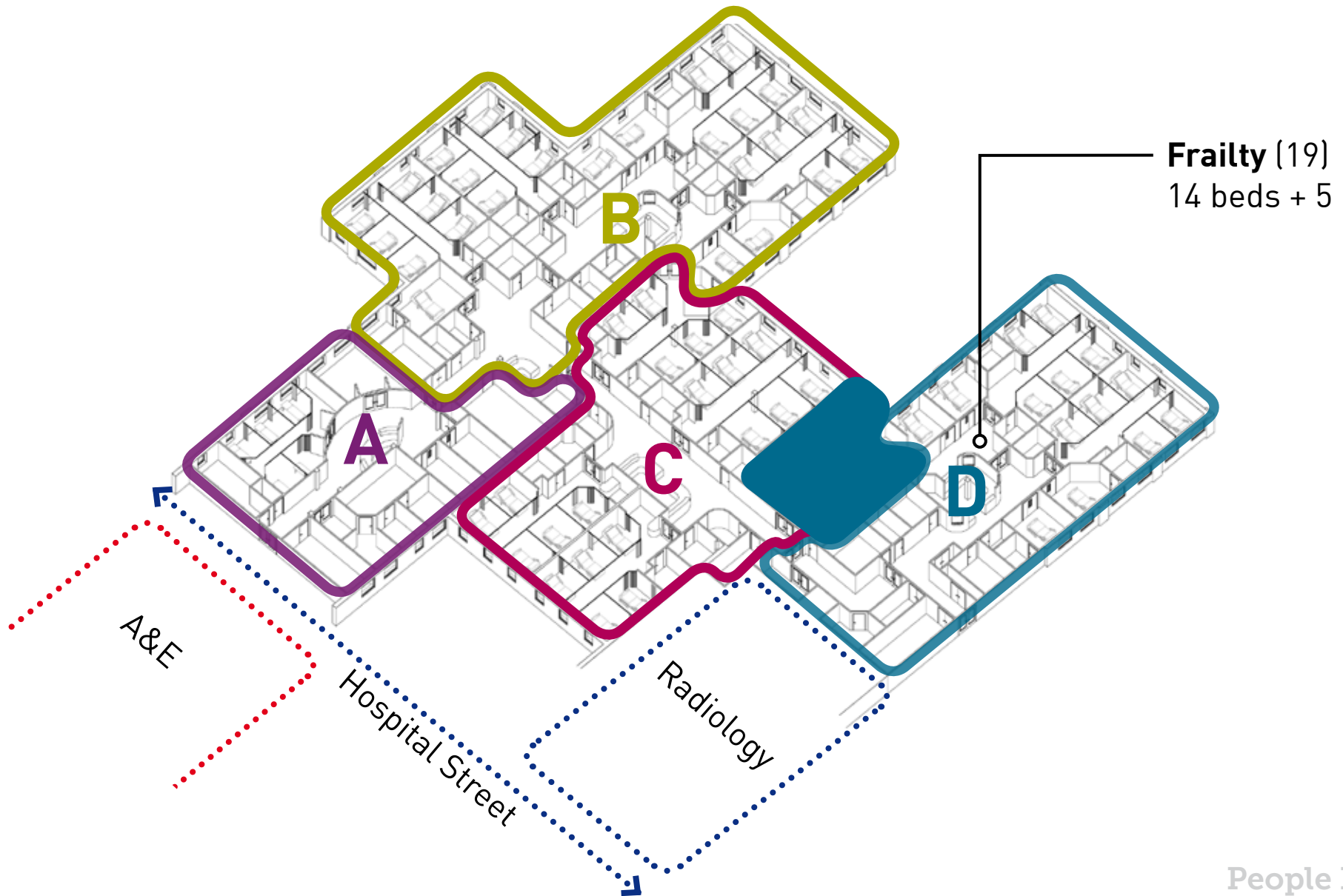
Flexibility in Reality

Positive Outcomes + Statistics



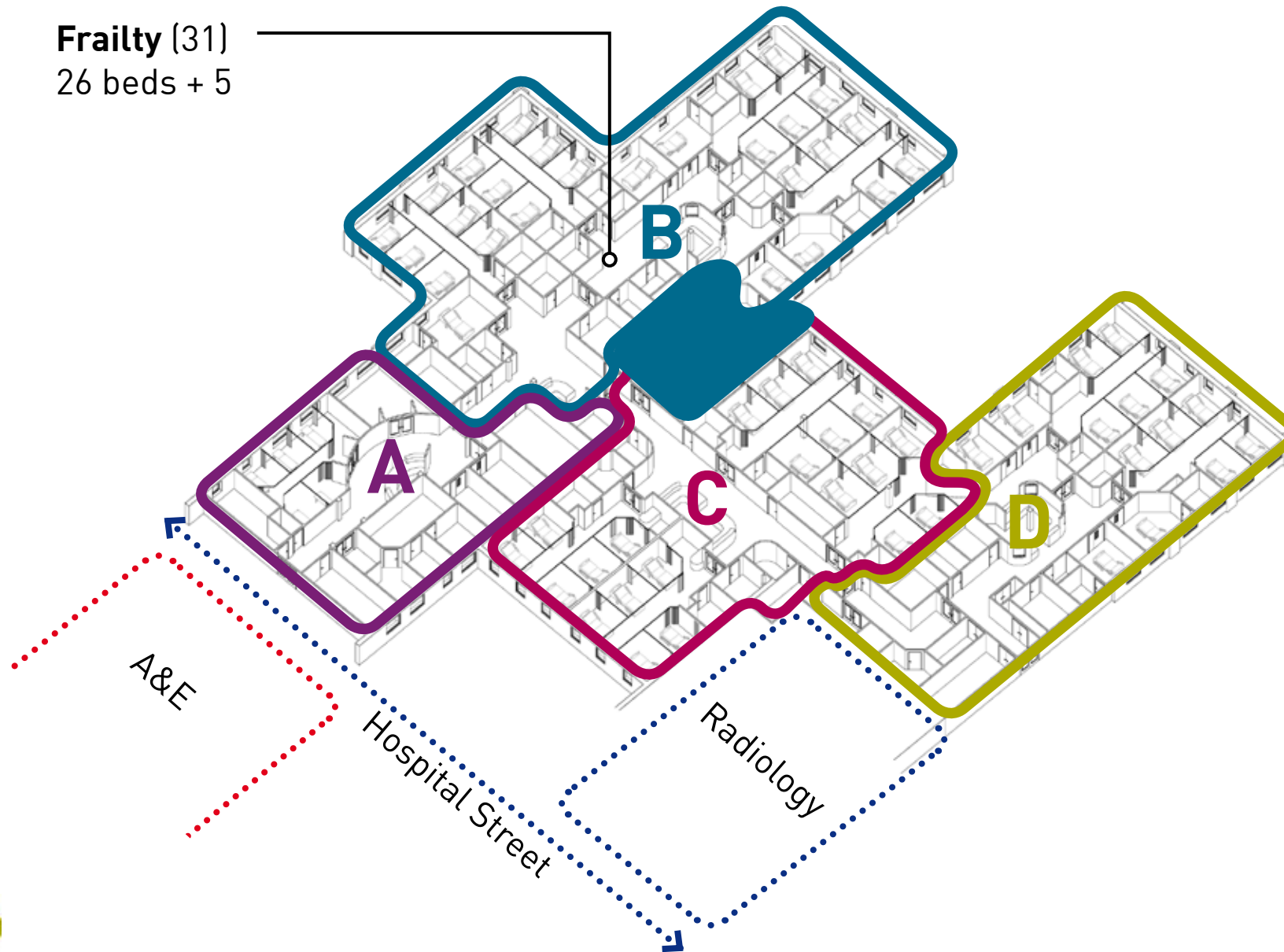
Adaptable Zones 2014

Positive Outcomes + Statistics



Adaptable Zones 2017

Positive Outcomes + Statistics





“The emergency floor at Worthing hospital brings to life the principal of bringing care to the patient -

The Future Hospital Vision”

Dr Mark Temple, RCP Future Hospital Officer

Birmingham / Delhi NCR / Edinburgh / Glasgow / London / Manchester / Newcastle / Oxford / Sherborne