
NEW KAROLINSKA UNIVERSITY HOSPITAL

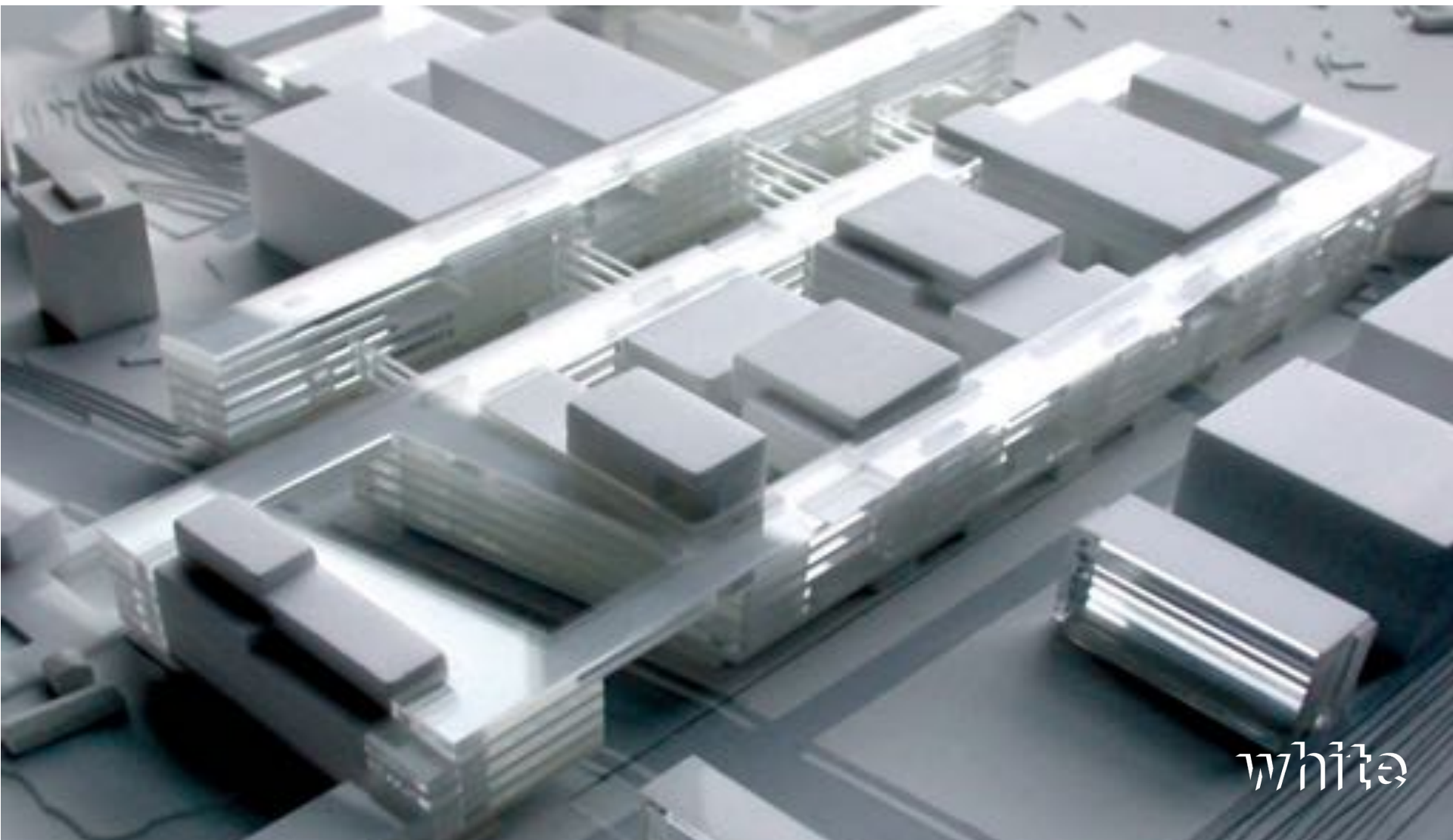
FUTURE HEALTH AND MEDICAL PLAN / STOCKHOLM

CHARLOTTE RUBEN
Architect and Partner, White Arkitekter, Sweden

EHD2016 LONDON
27-29 JUNE

white







London

Leiden MC
Radboud MC

Clarc Center, Stanford
Mission Bay

Mayo Clinic

Northwestern
Memorial Hospital

Johns Hopkins MC

UCLA, Ronald Reagan MC

Texas Medical MC

New York University MC

New York University MC





Tengbom Team
Karolinska Solna
white TENGBOM



**THE PATIENT
ALWAYS FIRST**

€9.5 BILLION

National investment plan (2010-20)



**2013 Sweden was top-ranked
for successful outcome!**

Based on:

- Equity**
- Publicly financed “free”**
- Cost efficient (9 of GDP)**



Challenges:

- Disjointed
- Long waiting times

The screenshot shows the Guardian website with the article title "Swedish healthcare is the best in the world, but there are still lessons to learn". The sub-headline reads: "Even Sweden struggles to co-ordinate its healthcare between hospitals, primary care and local authorities". The main image is a scenic view of a forest at sunset. The article text discusses Sweden's high ranking in the OECD's 2011 healthcare rankings, its position as the best in the world, and the challenges of coordinating care between different levels of the healthcare system.

Swedish healthcare is the best in the world, but there are still lessons to learn

Even Sweden struggles to co-ordinate its healthcare between hospitals, primary care and local authorities

Swedish healthcare is the best in the world, but there are still lessons to learn

Even Sweden struggles to co-ordinate its healthcare between hospitals, primary care and local authorities

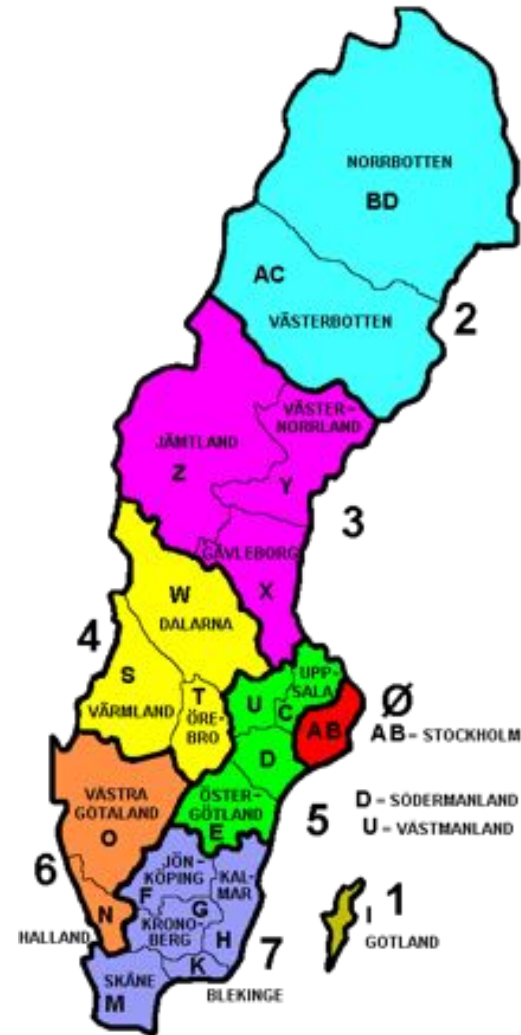
In December 2011, when the OECD released its overview of healthcare in Sweden, as part of its annual review of global health statistics the Swedish government was quick to call a press conference to celebrate the fact that the region rated the outcomes of treatment in Sweden among the best in the world.

More good news was added the following week, when an update of the OECD's 2011 rankings of healthcare systems in 19 industrialised countries saw Sweden move up from fourth place to first.

So far, so good. But all good things must come to an end. Sweden's healthcare still has serious governance issues that need to be addressed. The OECD noted that the biggest challenge to continued excellence in Sweden's health and social care system is the issue of co-ordinating care between hospitals, primary care and local authorities - a note that will be familiar to policymakers in the UK and many other countries.

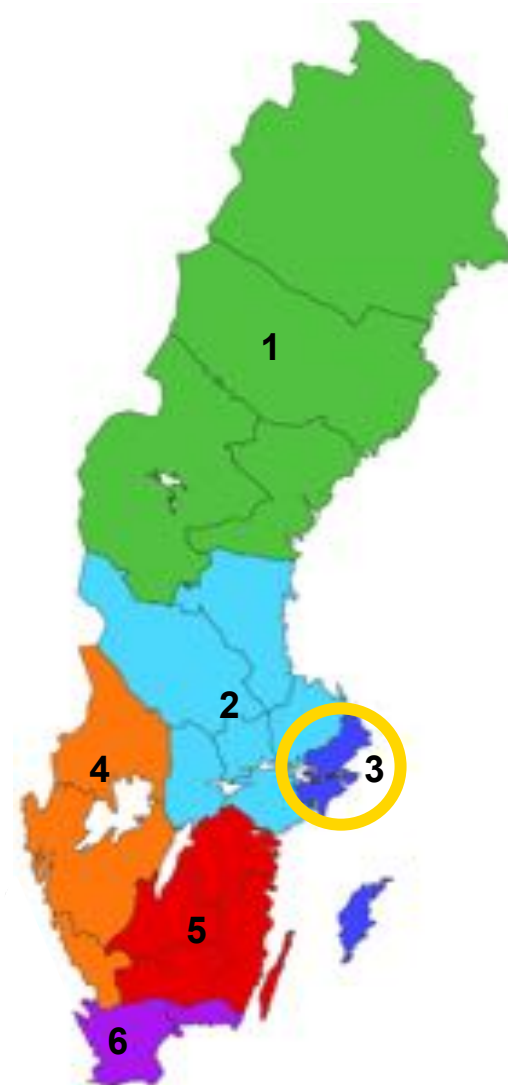
21 county councils

– 9.5 million inhabitants



21 → 6

- a new region plan
- more efficient
- better coordinated
- 2019-23 implementation period



STOCKHOLM

is the fastest growing city in Europe!

- 11% growth 2010-2020 (compared to London 5,8%)
- 2,6 million inhabitants by 2020 (+ 385 000)
- Excess of births, immigration, relocation, increased lonevity



Future health and medical care in Stockholm

–€ 5,15 billion investment

–6 new buildings for advanced treatment

–10 refurbishment projects for primary- and specialist centers

Karolinska Solna



Karolinska Huddinge



Danderyd Hospital



S:t Görans Hospital



Söder Hospital



Södertälje Hospital



Norrköping Hospital



Handen Hospital



S:t Eriks Eye Hospital



Sabbatsberg Hospital



Dalens Hospital



Bromma Hospital



Löwenströmska Hospital



Jakobsbergs Hospital



Sollentuna Hospital



Nacka Hospital



OBJECTIVES 2025

High accessibility

Healthcare at the
right time

Good quality and participation

Safe healthcare for
the right patient at
the right place

High efficiency

Safe healthcare at the right time,
to the right patient, at
the right place, and at
the right cost

**THE NEW KAROLINSKA
UNIVERSITY HOSPITAL**



**NEW KAROLINSKA
UNIVERSITY HOSPITAL**

**KAROLINSKA
INSTITUTE**

NEW URBAN DEVELOPMENT PLAN



“The project shall create attractive and humane environments with high architectural values, both within and around the hospital.”

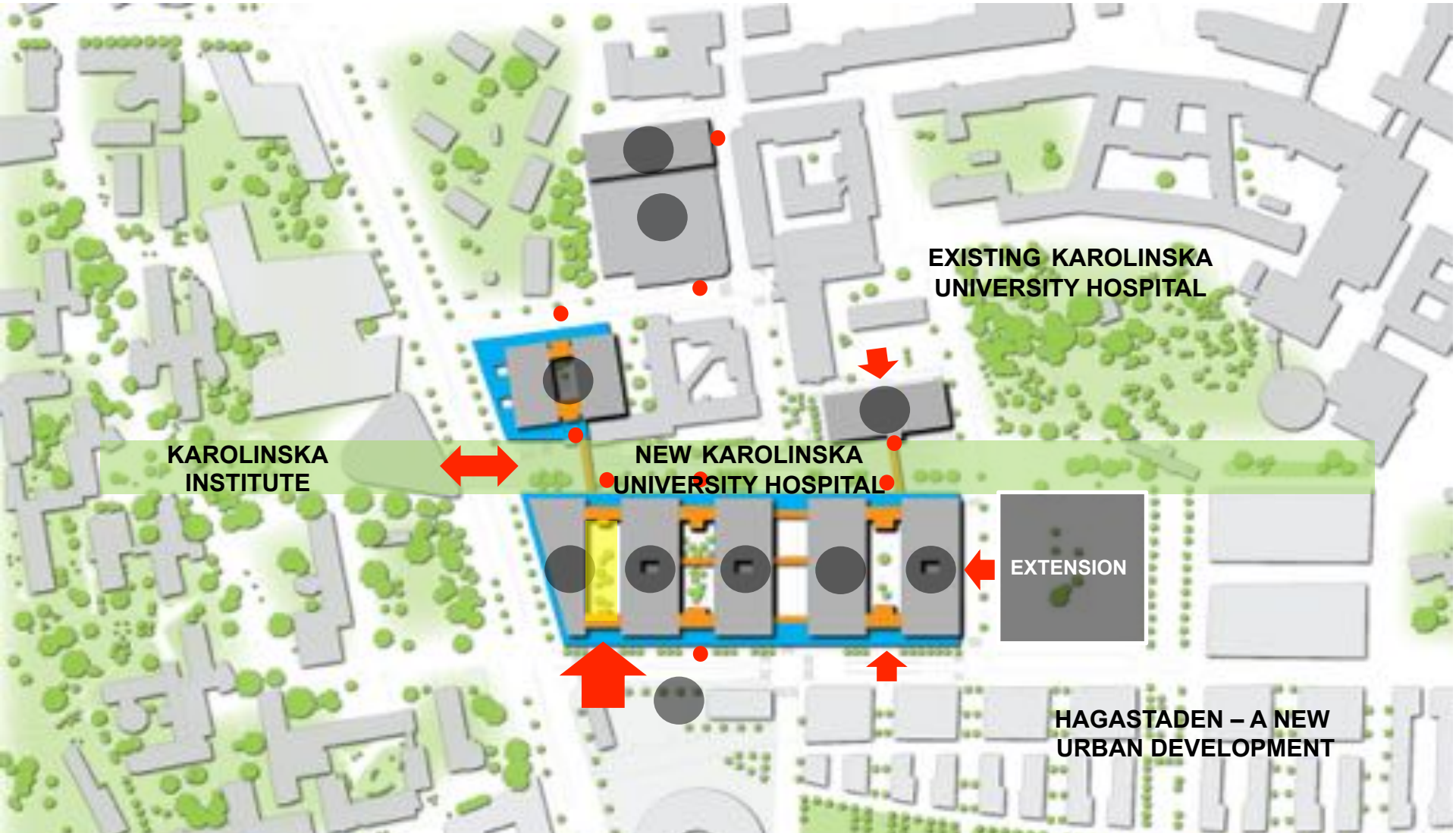
Sustainable hospital design

“The project shall create attractive and humane environments with high architectural values, both within and around the hospital”

1. A public space in an urban context
2. A knowledge hub for innovation
3. A safe place for healing and recovery
4. A dynamic and flexible working place

1. A public space in an urban context





KAROLINSKA
INSTITUTE

NEW KAROLINSKA
UNIVERSITY HOSPITAL

EXISTING KAROLINSKA
UNIVERSITY HOSPITAL

EXTENSION

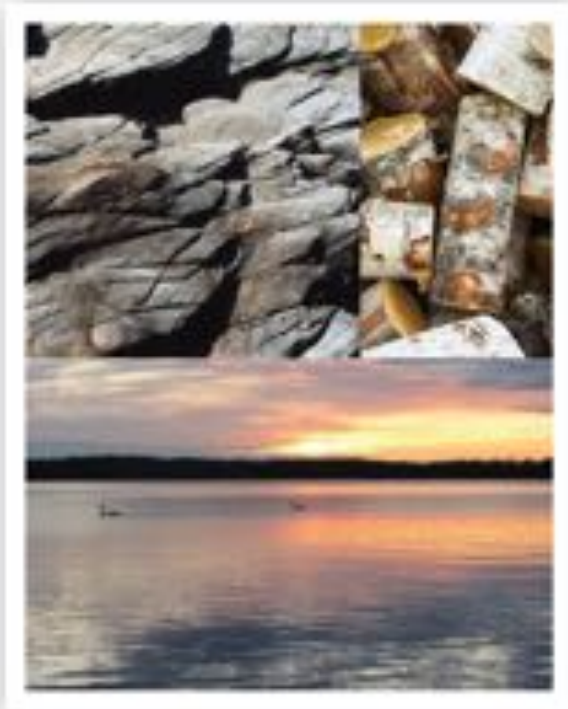
HAGASTADEN – A NEW
URBAN DEVELOPMENT



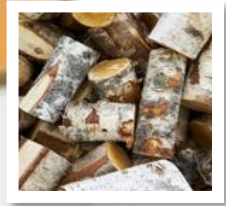
2. A knowledge hub for innovation

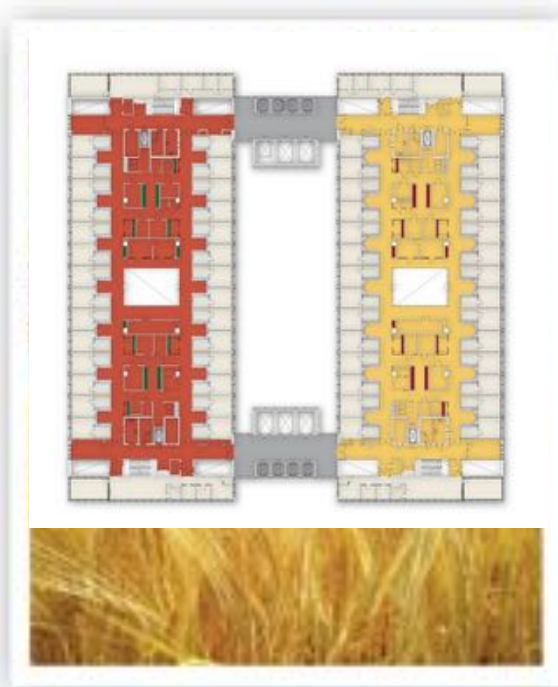


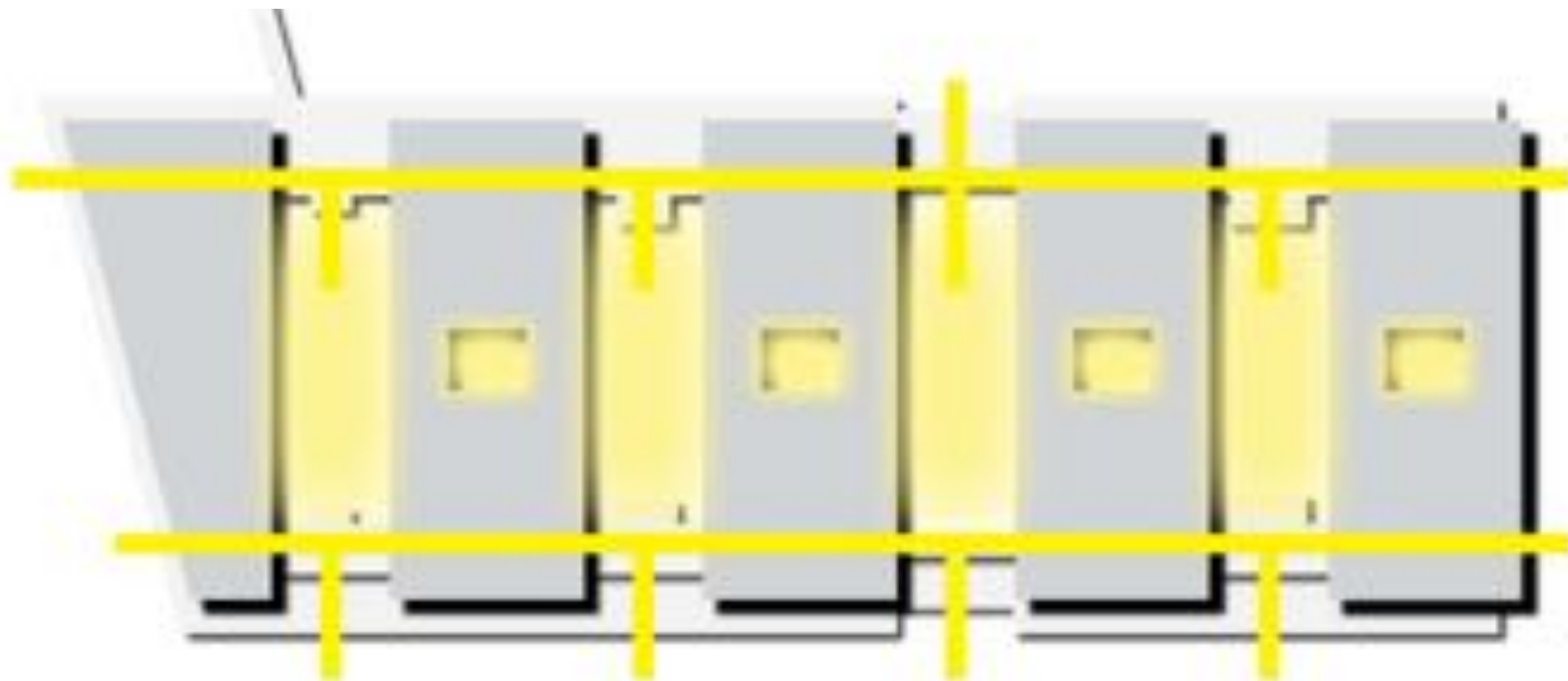
2. A KNOWLEGE HUB FOR INNOVATION



3. A safe place for healing and recovery

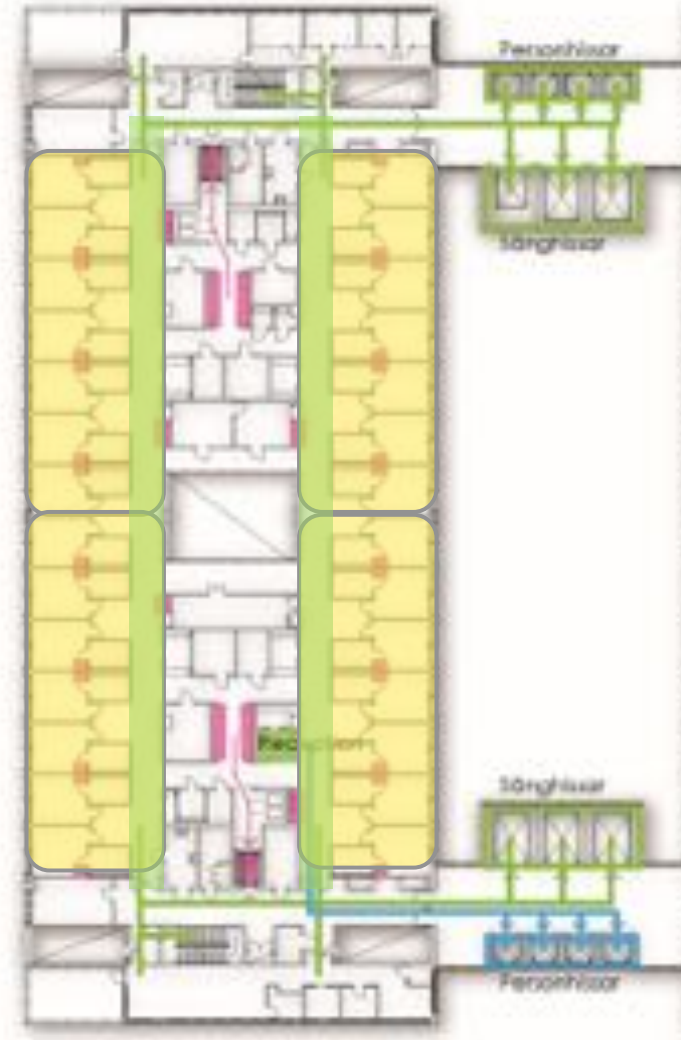


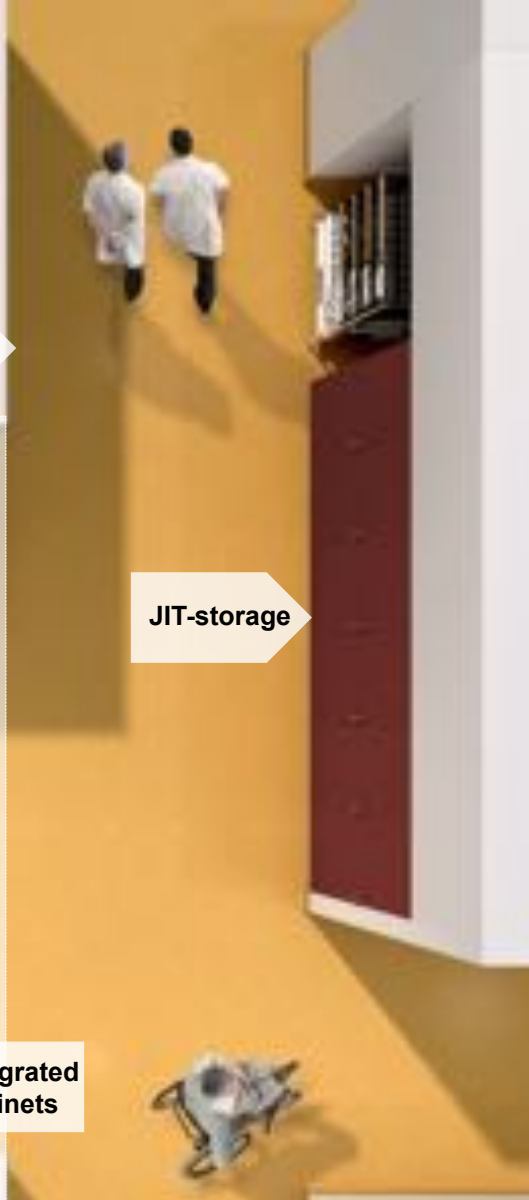
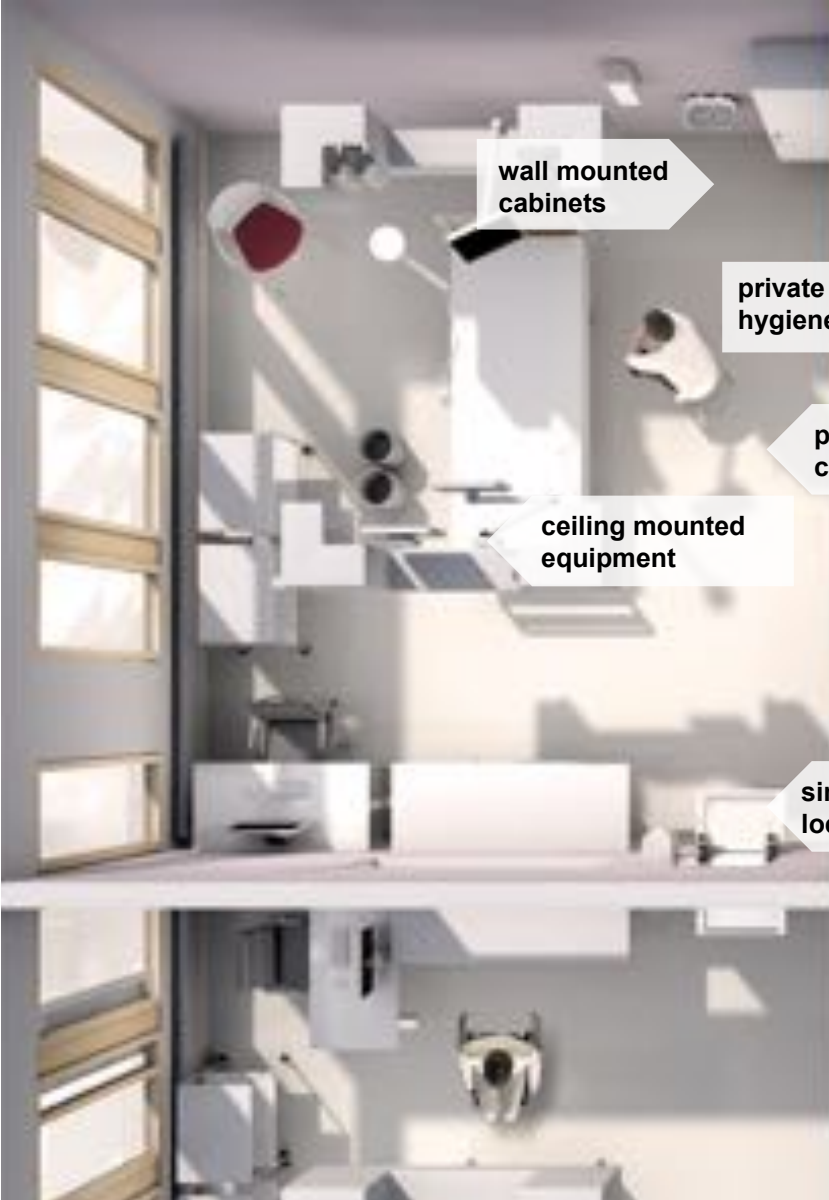






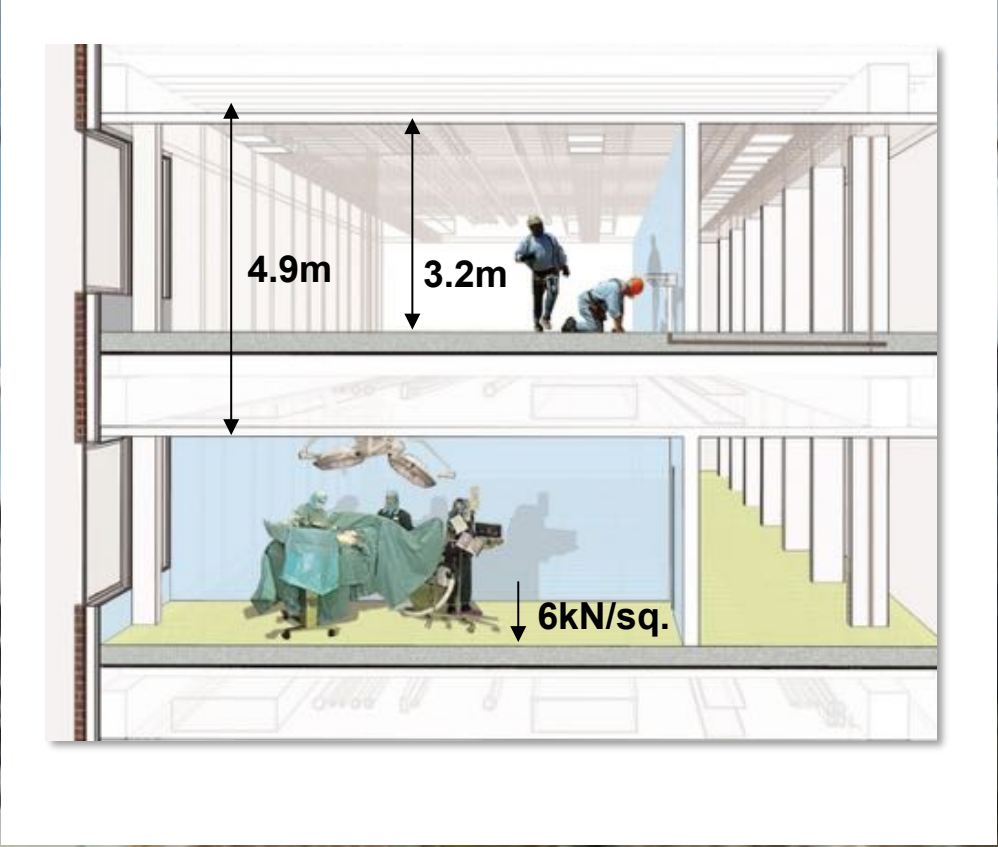
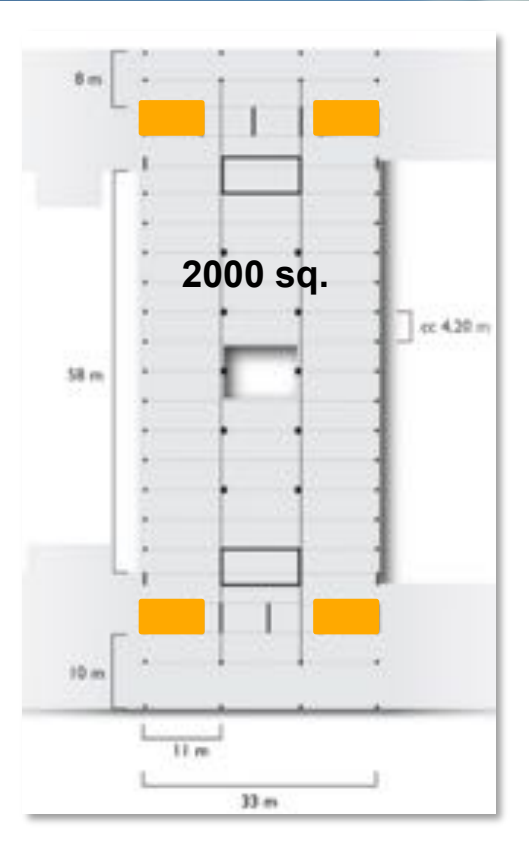
PATIENT SAFETY







4. A dynamic and flexible working place



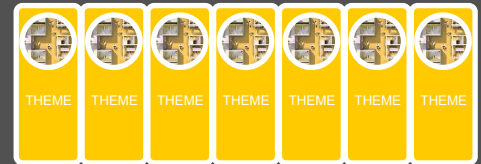
PARALLEL PROCESS

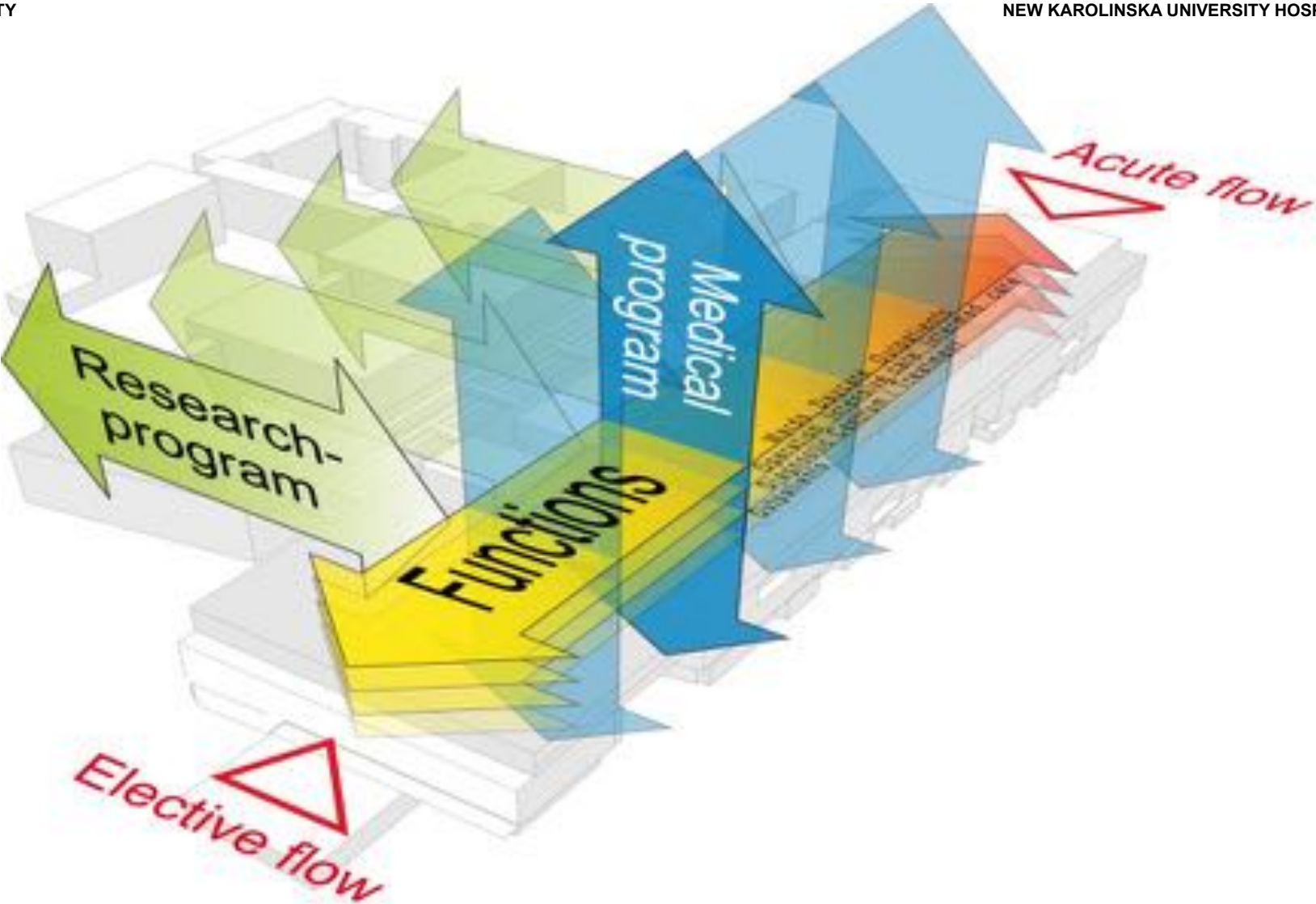


**TECHNICAL
DESIGN**

**DESIGN
CONCEPTS**

**CLINICAL
DESIGN**






THEMATIC CARE AT KAROLINSKA UNIVERSITY HOSPITAL SOLNA

- ★ **CANCER.** Advanced cancer surgery and treatment.
- ★ **CARDIOVASCULAR.** A theme that concerns diseases of the heart and vasculars.
- ★ **NEUROLOGICAL.** Includes diagnoses such as various types of dementia, stroke and MS.
- ★ **INFLAMMATORY.** Systemic autoimmune inflammatory diseases is a new umbrella term for diseases of the skin, kidneys, joints and vasculars.
- ★ **REPARATIVE MEDICINE.** When treating serious injuries, organs and tissues often need to be repaired or replaced. It includes, for example, orthopedics.
- ★ **PEDIATRIC AND OBSTETRIC.** A theme that includes health care for children, pregnancy and childbirth.

★ 2016

☆ 2017/18

Sustainable hospital design

- 
- 1. A public space in an urban context**
 - 2. A knowledge hub for innovation**
 - 3. A safe place for healing and recovery**
 - 4. A dynamic and flexible working place**

Sustainable hospital design



*Architecture can(not) save life
- but certainly reduce suffering
and accelerate a healthy spirit!*

THANK YOU!

ORGANISATION

| | |
|----------------------|--|
| CLIENT: | Stockholm County Council |
| CONTRACTOR: | Scandinavian Hospital Partner (SHP/Skanska) |
| ARCHITECT: | WhiteTengbomTeam |
| CONSTRUCTION: | Skanska Teknik / Ramböll |
| MEP: | SWECO / ÅF |